



**REAL ESTATE INTERESTS, LLC**  
660 Woodward Avenue • Suite 1500 • Detroit • Michigan 48226

~~April 5, 2021~~ – Revised April 6, 2021

Mr. Jered Dean  
Department of Public Works - Maps and Records Bureau  
200 Coleman A. Young Municipal Center  
2 Woodward Avenue  
Detroit, Michigan 48226

RE: Real Estate Interests, LLC – Request for the outright vacation of a public easement in an already vacated alley.

Real Estate Interests, LLC 660 Woodward Ave., Suite 1500, Detroit, Michigan 48225 on behalf of 5301 Grand River, LLC, 535 Griswold St., Suite 111-261, Detroit, Michigan 48226, respectfully requests the outright vacation (with no easement retained) of the existing public alley, 20 feet wide, bounded by Loraine Avenue (60 feet wide) and Grand River Avenue (100 feet wide), located near 5261 W. Grand River Avenue. A more specific description of the alley follows:

- Request the outright vacation (with no easement retained) of a portion of the existing 20 foot wide alley abutting Lots 5 through 11 of Hubbard and Dingwall's Humboldt Avenue Subdivision, according to the plat thereof as recorded in Liber 17 of Plats on page 54 Wayne County Records. All lots on both sides of the portion of the alley to be vacated are owned by 5301 Grand River, LLC.

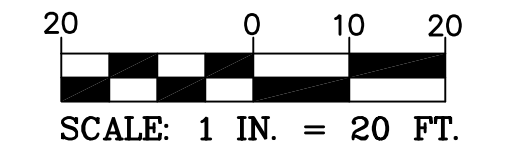
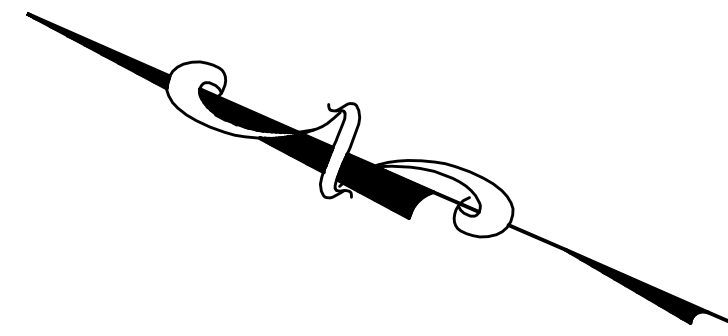
The outright vacation of this private alley with a reserved public easement is necessary for the redevelopment of the site. Limits of the requested vacation can be found in the attachment, enclosed herein. The existing DWSD sewer in the alley shall be abandoned within the limits of the vacation area. There are no water, gas or underground electricity lines within the alley.

Real Estate Interests, LLC has been asked to facilitate the requested vacation. If you should have any questions, please do not hesitate to contact me at 313.408.5384 [ematthews@re-interests.com](mailto:ematthews@re-interests.com).

Sincerely,

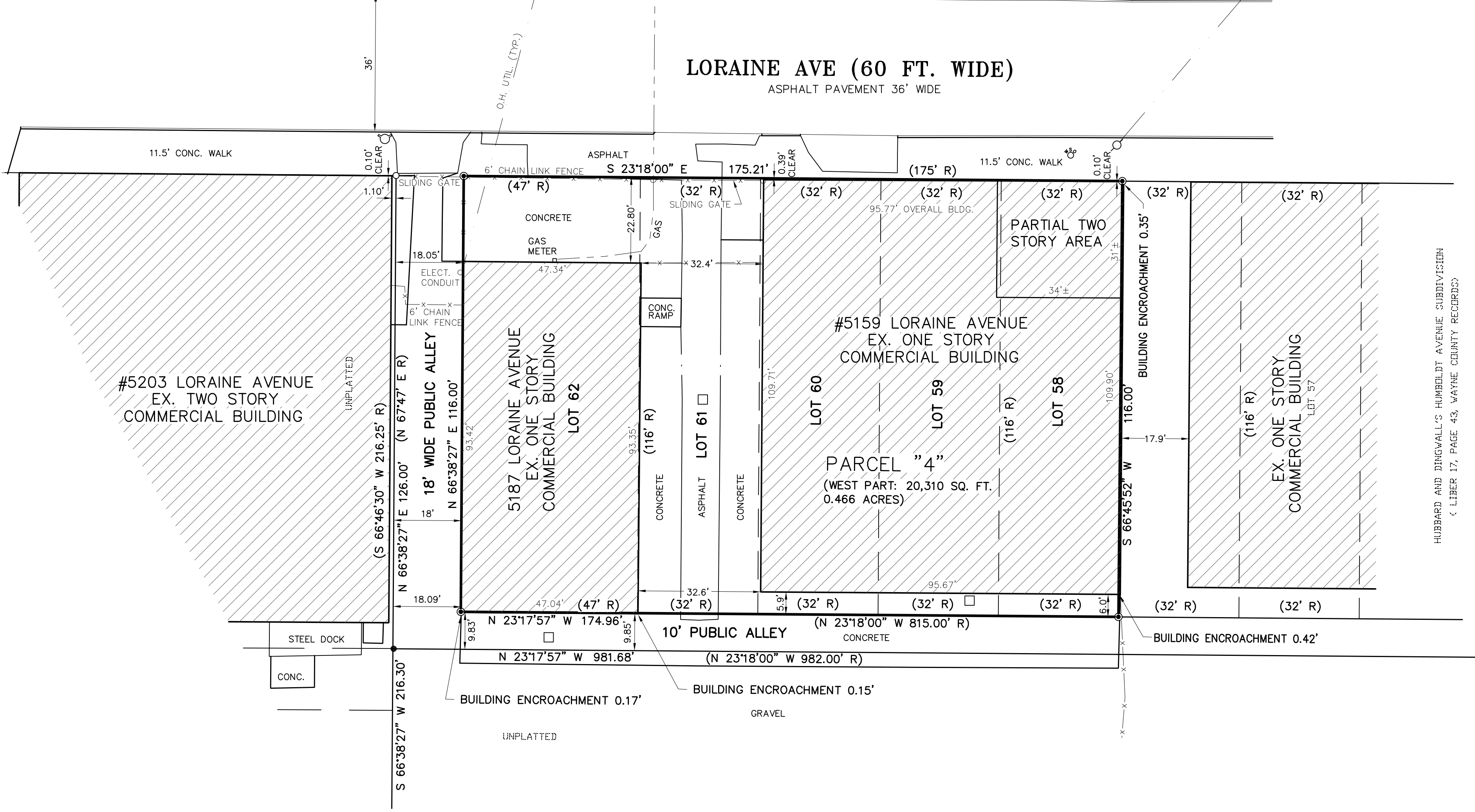
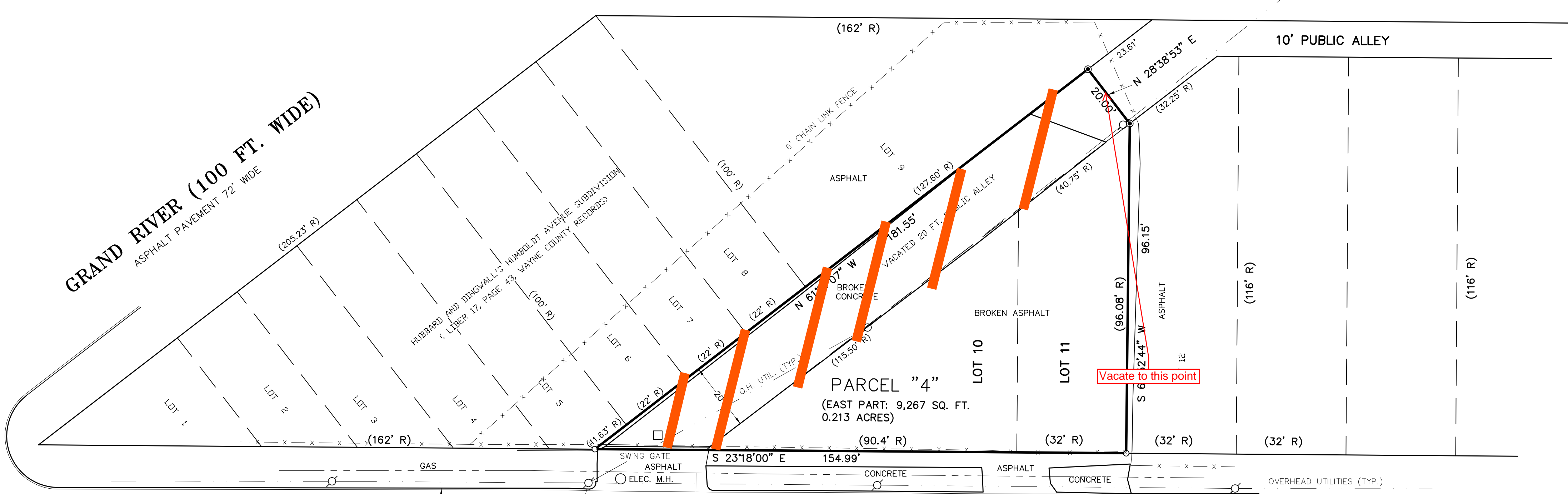
A handwritten signature in black ink, appearing to read "W. Emery Matthews", written over a light blue horizontal line.

**W. Emery Matthews**  
**Managing Principal**



LEGEND

- = IRON FOUND
- = IRON SET
- ⊙ = PK NAIL SET
- = CATCH BASIN
- = MAN HOLE
- ⊗ = GATE VALVE & WELL
- ⊕ = FIRE HYD.
- ⊙ = POST INDICATOR VALVE
- ⊙ = LIGHT POLE
- ⊙ = UTILITY POLE



PREPARED FOR  
**JONATHAN MAYERS**

**ARPEE/DONNAN, INC.**  
LAND SURVEYING ENGINEERING · MAPPING  
32233 SCHOOLCRAFT RD., SUITE 103  
LYNDIA, MICHIGAN 48150  
PHONE (734) 959-3335 FAX (734) 959-3324

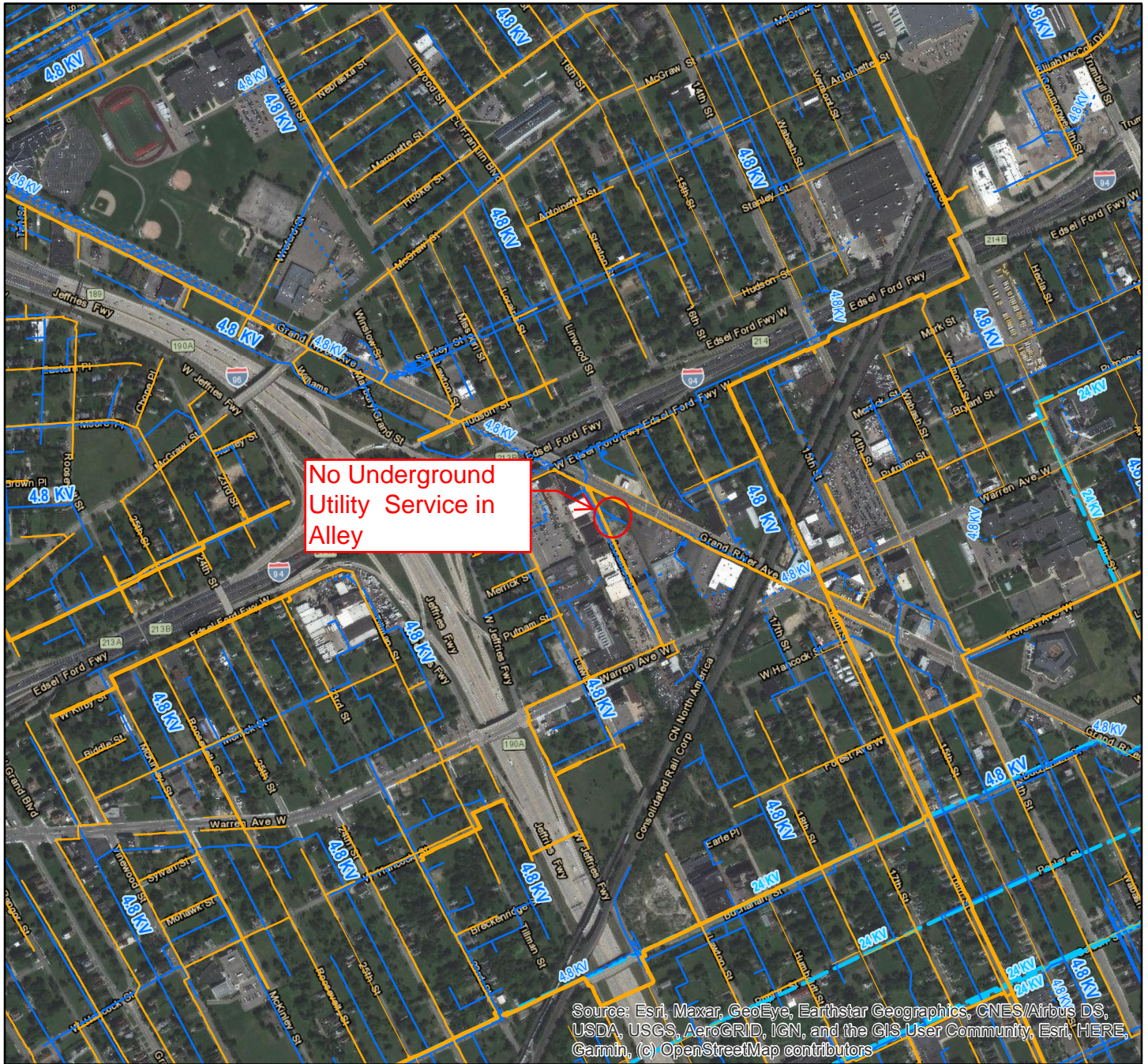
ALTA/ACSM LAND TITLE SURVEY  
**PARCEL 4**

THAT PART OF THE LORANGER FARM PRIVATE CLAIM 474, LYING BETWEEN EDSSEL FORD FREEWAY (I-94) AND WARREN AVE. AND EASTERLY OF THE WESTERLY LINE OF SAID PRIVATE CLAIM 474, CITY OF DETROIT, WAYNE COUNTY, MICHIGAN.

DATE 3/17/17  
DRAFTED BY WGD  
CHECKED BY WRD  
F.B. 256  
FILE: 17007  
JOB #  
**17007**



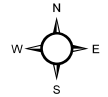
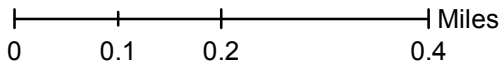
# Grand River & Loraine, Detroit, MI C O N F I D E N T I A L



No Underground  
Utility Service in  
Alley

Source: Esri, Maxar, GeoEye, Earthstar Geographics, CNES/Airbus DS, USDA, USGS, AeroGRID, IGN, and the GIS User Community, Esri, HERE, Garmin, (c) OpenStreetMap contributors

The provider of this map does not warrant or guarantee the accuracy or completeness of the map and data provided, and disclaims any and all liability that results from the use of this map or data. The burden for determining accuracy, completeness, or appropriateness for use rests solely on the requester. The requester acknowledges and accepts the limitations of the data, including the fact that the data is dynamic and is in a constant state of maintenance, correction and update.



## Landbase

- Site Location
- Station / Substation
- Industrial Substation

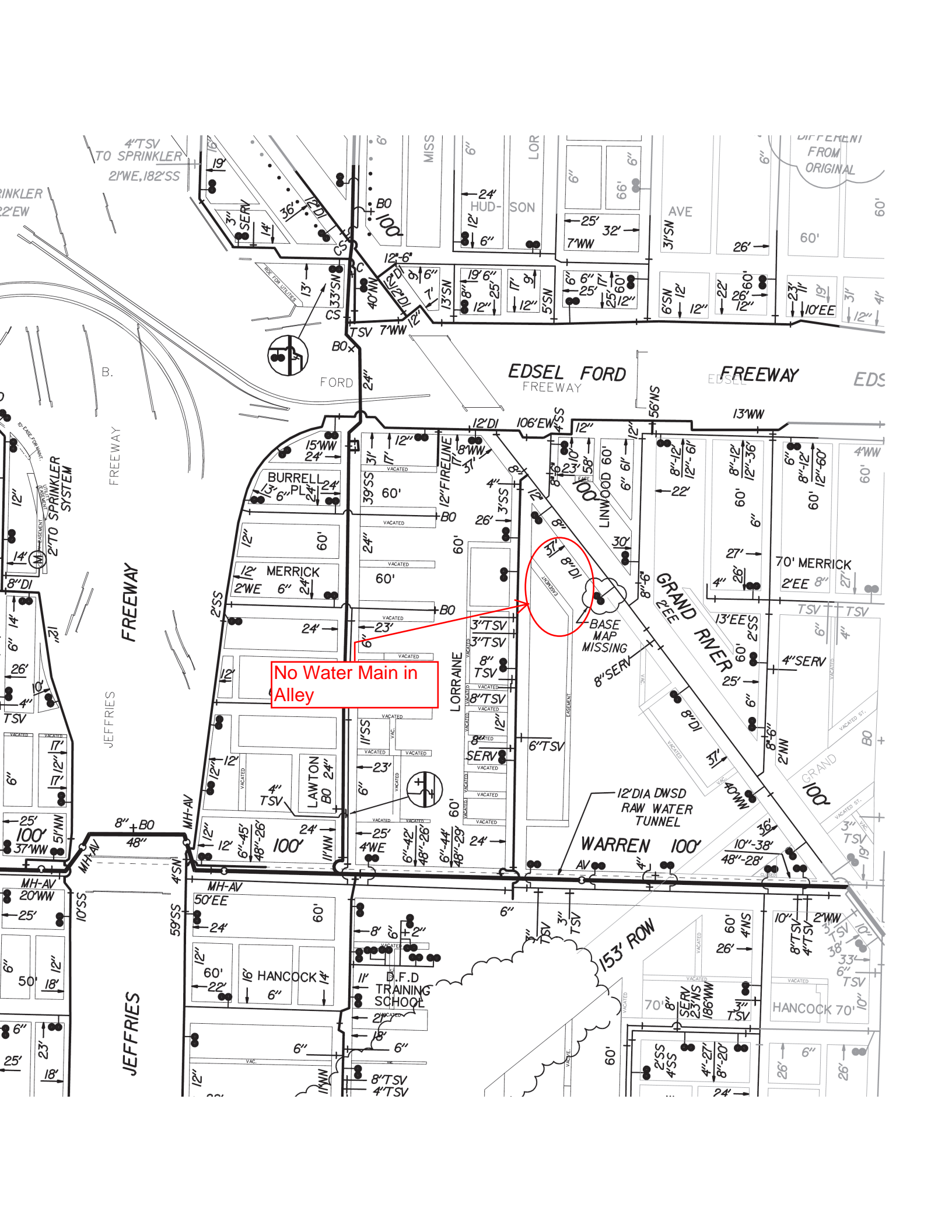
## Electric

- Primary Overhead
  - Primary Underground
  - Subtransmission OH
  - Subtransmission UG
  - Transmission
- Data circa 2005, not maintained by DTE. Check with ITC for updates.

## Gas

- Distribution Main**  
Line Thickness Represents Pipe Diameter
- "Foreign" Utility
  - SubTransmission Main
  - Transmission Main





No Water Main in Alley

EDSEL FORD FREEWAY

JEFFRIES FREEWAY

GRAND RIVER

BASE MAP MISSING

12" DIA DWSR RAW WATER TUNNEL

WARREN 100'

153' ROW

D.F.D TRAINING SCHOOL

BURRELL

LORRAINE

LAWTON

HANCOCK

MISS

LOR

HUDSON

AVE

DIFFERENT FROM ORIGINAL

4" TSV TO SPRINKLER  
2" WE, 182' SS

SPRINKLER  
2" WE

2" TO SPRINKLER SYSTEM

TSV

100'

MH-AV

25'

6"

25'

18'

B.

FORD

EDSEL FORD FREEWAY

EDSEL FORD FREEWAY

EDSEL FORD FREEWAY

2" SS

15' WW

12" MERRICK

2" WE

24'

12"

12"

12"

12"

12"

12"

12"

12"

12"

12"

12"

12"

12"

12"

12"

12"

12"

12"

12"

12"

12"

12"

12"

12"

12"

12"

12"

12"

12"

12"

12"

12"

12"

12"

12"

12"

12"

12"

12"

12"

12"

12"

12"

12"

12"

12"

12"

12"

12"

12"

12"

12"

12"

12"

12"

12"

12"

12"

12"

12"

12"

12"

12"

12"

12"

12"

12"

12"

12"

12"

12"

12"

12"

12"

12"

12"

12"

12"

12"

12"

12"

12"

12"

12"

12"

12"

12"

12"

12"

12"

12"

12"

12"

12"

12"

12"

12"

12"

12"

12"

12"

12"

12"

12"

12"

12"

12"

12"

12"

12"

12"

12"

12"

12"

12"

12"

12"

12"

12"

12"

12"

12"

12"

12"

12"

12"

12"

12"

12"

12"

12"

12"

12"

12"

12"

12"

12"

12"

12"

12"

12"

12"

12"

12"

12"

12"

12"

12"

12"

12"

12"

12"

12"

12"

12"

12"

12"

12"

12"

12"

12"

12"

12"

12"

12"

12"

12"

12"

12"

12"

12"

12"

12"

12"

12"

12"

12"

12"

12"

12"

12"

12"

12"

12"

12"

12"

12"

12"

12"

12"

12"

12"

12"

12"

12"

12"

12"

12"

12"

12"

12"

12"

12"

12"

12"

12"

12"

12"

12"

12"

12"

12"

12"

12"

12"

12"

12"

12"

12"

12"

12"

12"

12"

12"

12"

12"

12"

12"

12"

12"

12"

12"

12"

12"

12"

12"

12"

12"

12"

12"

12"

12"

12"

12"

12"

12"

12"

12"

12"

12"

12"

12"

12"

12"

12"

12"

12"

12"

12"

12"

12"

12"

12"

12"

12"

12"

12"

12"

12"

12"

12"

12"

12"

12"

12"

12"

12"

12"

12"

12"

12"

12" Sewer Main in Alley

