

PARKING LOT
25,578 SF

REQUIRED LANDSCAPING:
(89) PARKING SPACES X 18 SF
EACH = 1,602 SF

PROVIDED LANDSCAPING:
1,684 SF OF LANDSCAPING

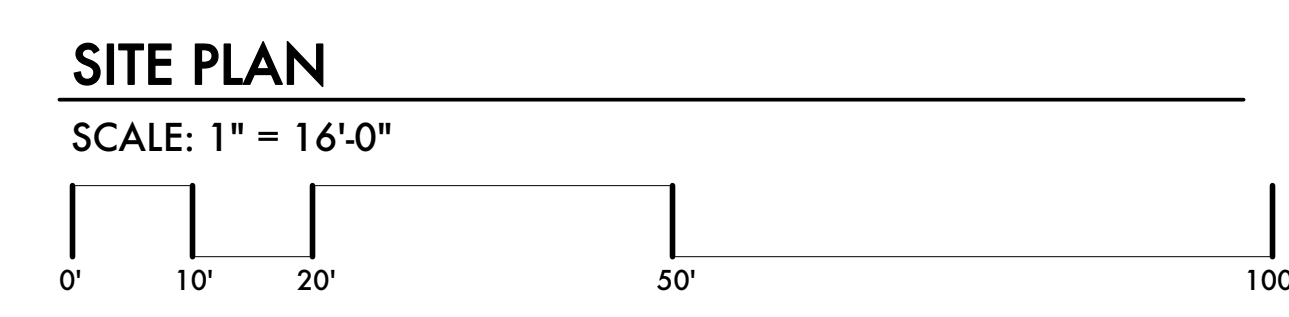
PARKING LOT INTERIOR LANDSCAPING PER THE CITY OF DETROIT ZONING ORDINANCE SEC. 50-14-343. - INTERIOR LANDSCAPING.

OFF-STREET PARKING AREAS FOR OPERABLE, PRIVATE PASSENGER VEHICLES, THAT HAVE A CAPACITY OF 25 OR MORE PARKING SPACES, SHALL CONTAIN LANDSCAPED AREAS, LOCATED ENTIRELY WITHIN THE EDGES OF THE OFF-STREET PARKING AREA, THAT SERVE TO BREAK UP THE EXPANSE OF PAVEMENT AND MANAGE STORMWATER IN ACCORDANCE WITH FIGURE 50-14-343.

A RAISED CURB MUST EDGE THE LANDSCAPED AREA, MUST BE AT LEAST SIX INCHES IN HEIGHT, AND MUST CONTAIN INLETS AT APPROPRIATE INTERVALS TO ALLOW STORMWATER INFILTRATION FROM THE OPEN PARKING AREA.

THE FOLLOWING ADDITIONAL REQUIREMENTS APPLY:
(1) WITHIN THE INTERIOR OF THE OFF-STREET PARKING AREA, INTERIOR LANDSCAPED AREAS SHALL BE PROVIDED AT THE FOLLOWING RATE:

AMOUNT OF LANDSCAPED AREA REQUIRED PER PARKING SPACE
(25-100 SPACES = 18 SQUARE FEET PER SPACE)
(30 NEW SPACES X 18 SQUARE FEET PER SPACE = 540 SQUARE FEET OF INTERIOR LANDSCAPING REQUIRED).



08.24.21 Owner Review
08.03.21 Owner Review
02.12.21 Owner Review
Date: Issued For:

The Foundry
3240 Woodbridge
Detroit, Michigan 48207

studioONE : DETROIT
architectural
urban
interior DESIGN

330 Madison Avenue Detroit, Michigan 48226
4th Floor 313.568.2790 [p]
http://www.studioonedetroit.com jg@studioone-hq.com

Project Number: -
Sheet Title:
SITE PLAN