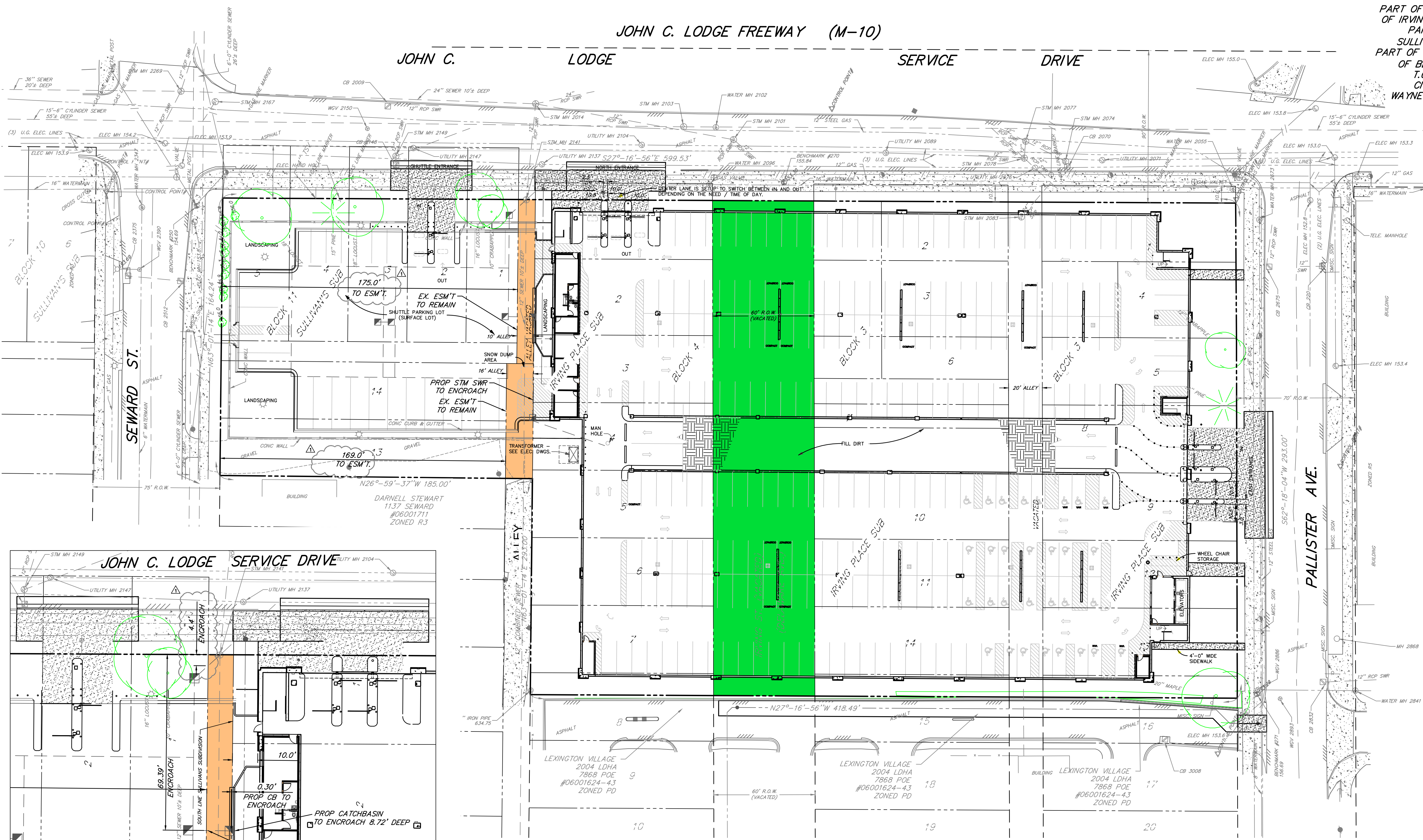
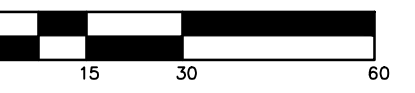
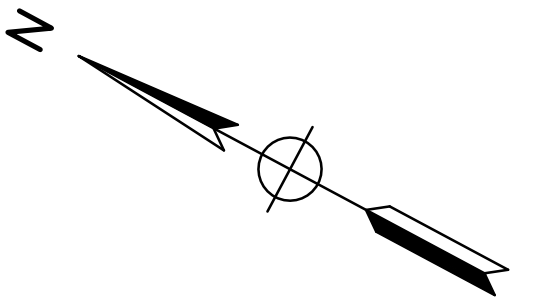


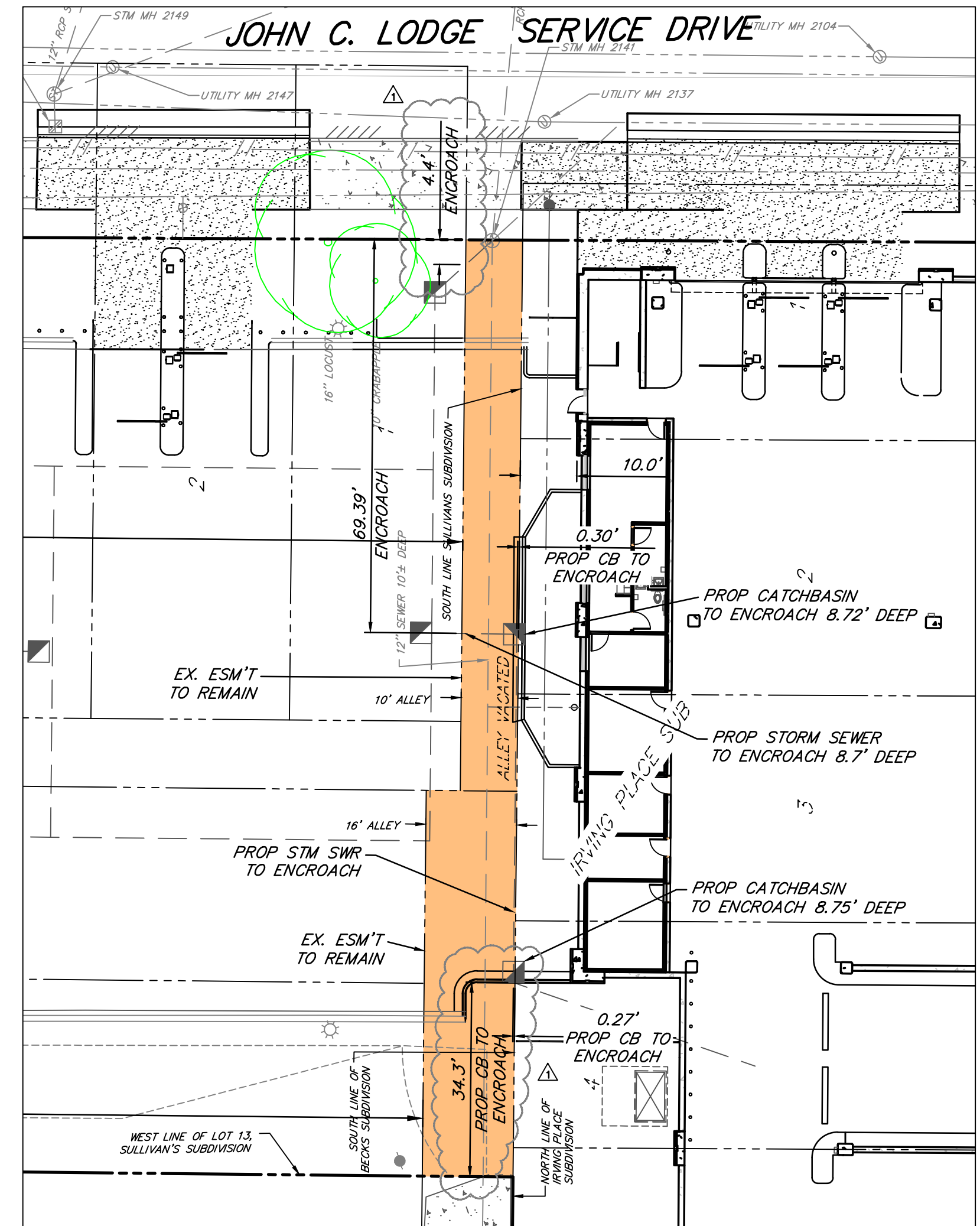
JOHN C. LODGE FREEWAY (M-10)

JOHN C. LODGE SERVICE DRIVE

PART OF BLOCK 3 & BLOCK 4 OF IRVING PLACE SUBDIVISION, PART OF BLOCK 11, SULLIVAN'S SUBDIVISION, PART OF BLOCK 10 & BLOCK 11 OF BECK'S SUBDIVISION T.O1 S. - R.11 E. CITY OF DETROIT WAYNE COUNTY, MICHIGAN



**NOTES:**  
 EXISTING ALLEY TO BE VACATED, SEWER EASEMENT TO REMAIN  
 EXISTING EASEMENT TO BE VACATED  
 THERE ARE NO AERIAL ENCROACHMENTS OF THE EXISTING EASEMENT TO REMAIN IN PLACE.



EASEMENT DETAIL  
 SCALE: 1" = 20'

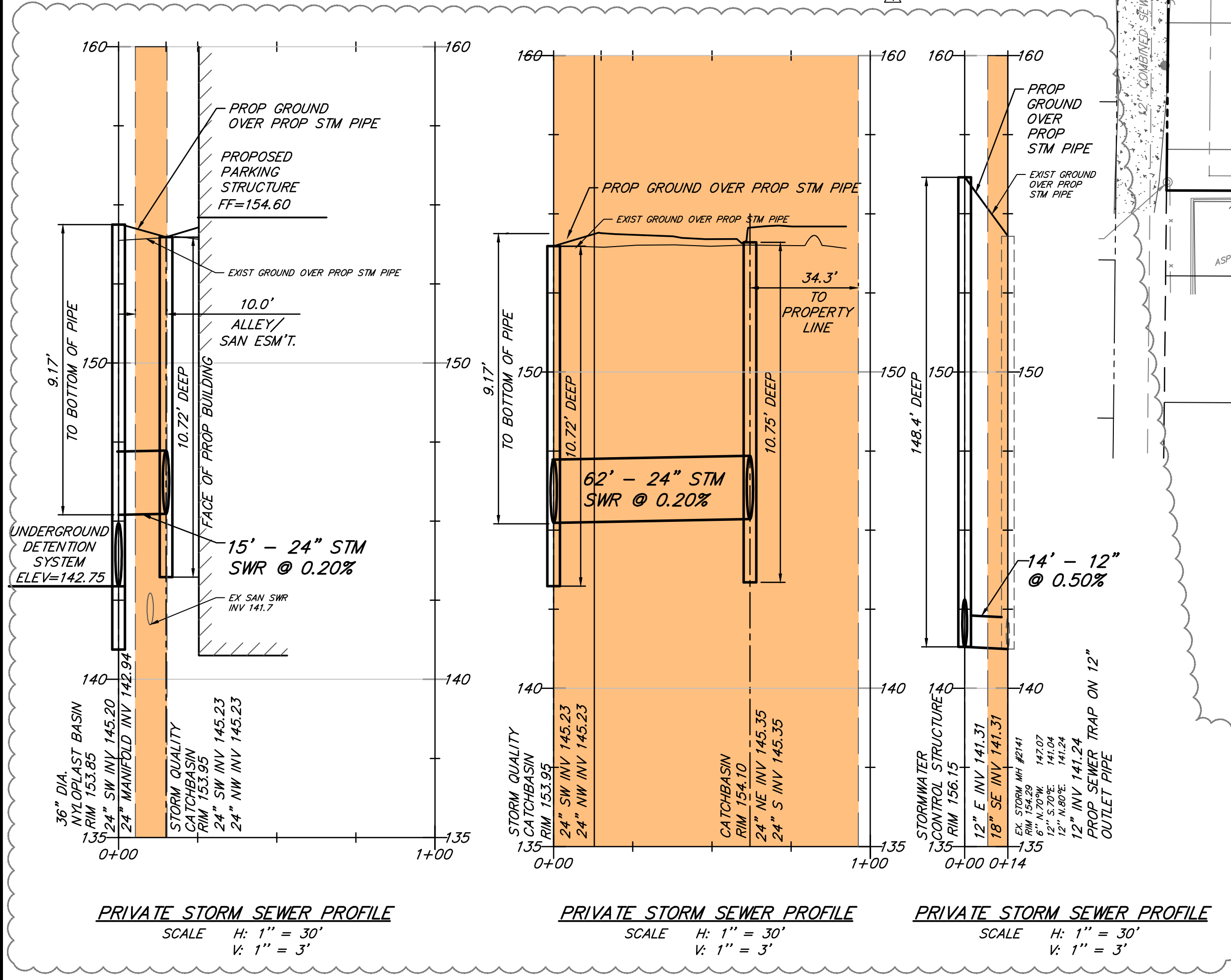
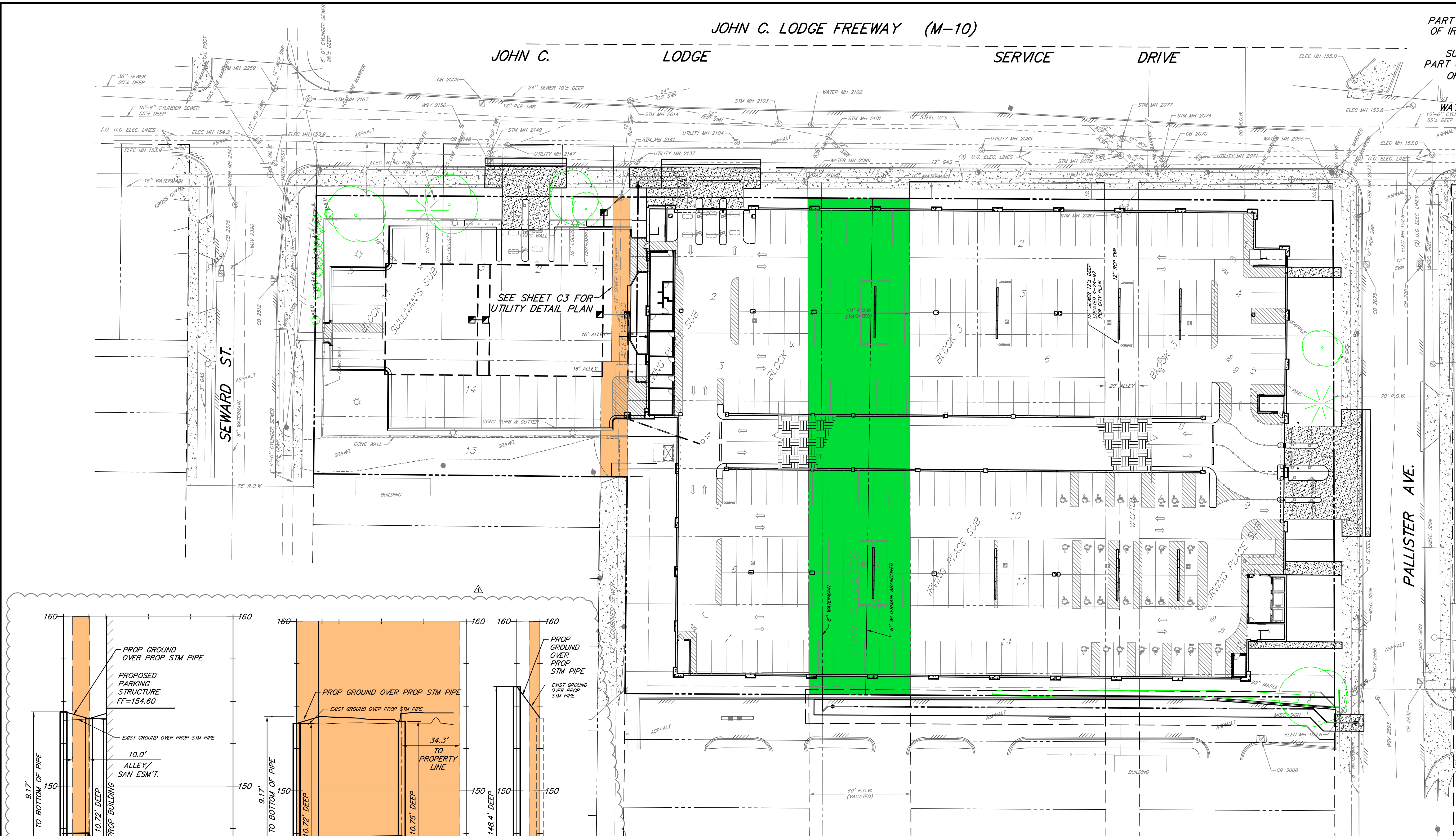
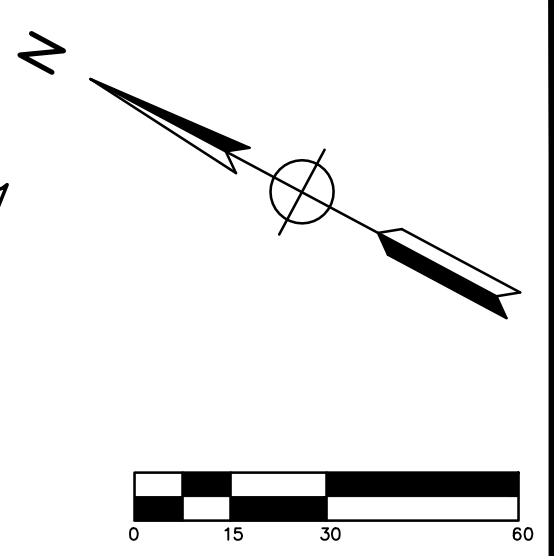
CAR	REVISED PER CITY COMMENTS	8-23-21
CAR	REVISED PER CITY REVIEW	8-17-21
BY	MARK	REVISIONS DATE
THE WORK REPRESENTED BY THIS DRAWING WAS DESIGNED BY THE ENGINEER FOR THIS SPECIFIC APPLICATION AND SPECIFIC LOCATION DESCRIBED HEREIN IN ACCORDANCE WITH THE CONDITIONS PREVALENT AT THE TIME THE DESIGN WAS DONE. THE ENGINEER DOES NOT GUARANTEE AND WILL NOT BE LIABLE FOR ANY OTHER LOCATION, CONDITION, DESIGN OR PURPOSE.		
<b>HOBBS &amp; BLACK ARCHITECTS</b> 100 NORTH STATE ANN ARBOR, MI 48104		
<b>SITE PLAN</b> HENRY FORD PARKING STRUCTURE ALLEY & EASEMENT EXHIBIT PALLISTER AVENUE		
		SAGINAW OFFICE 230 S. Washington Ave. Saginaw, MI 48607 Tel. 989-754-4717 Fax: 989-754-4440 www.SpicerGroup.com
DE. BY: CAR	CH. BY: BMB	PROJECT NO. 126514SG2018
DR. BY: CAR	APP. BY: JEW	
STDS.	SHEET 1 OF 3	C
DATE JULY 30, 2021	FILE NO. D-5804-1	1
SCALE 1" = 30'		

RET. F.B. PG. ACAD FILE. PLOTTING SCALE:

JOHN C. LODGE FREEWAY (M-10)

JOHN C. LODGE SERVICE DRIVE

PART OF BLOCK 3 & BLOCK 4  
OF IRVING PLACE SUBDIVISION,  
PART OF BLOCK 11,  
SULLIVAN'S SUBDIVISION,  
PART OF BLOCK 10 & BLOCK 11  
OF BECK'S SUBDIVISION  
T.01 S. - R.11 E.  
CITY OF DETROIT  
WAYNE COUNTY, MICHIGAN



**PROFILE NOTES:**  
PROFILES ARE SHOWN THROUGH THE PROPOSED STORM SEWER PIPE.

**NOTES:**  
EXISTING ALLEY TO BE VACATED,  
SEWER EASEMENT TO REMAIN  
EXISTING EASEMENT TO BE VACATED



CAR	REVISED PER CITY COMMENTS	8-23-21
CAR	REVISED PER CITY REVIEW	8-17-21
BY: MARK	REVISIONS	DATE

THE WORK REPRESENTED BY THIS DRAWING WAS DESIGNED BY THE ENGINEER FOR THIS SPECIFIC APPLICATION AND SPECIFIC LOCATION DESCRIBED HEREIN IN ACCORDANCE WITH THE CONDITIONS PREVALENT AT THE TIME THE DESIGN WAS DONE. THE ENGINEER DOES NOT GUARANTEE AND WILL NOT BE LIABLE FOR ANY OTHER LOCATION, CONDITION, DESIGN OR PURPOSE.

**HOBBS & BLACK ARCHITECTS**  
100 NORTH STATE  
ANN ARBOR, MI 48104

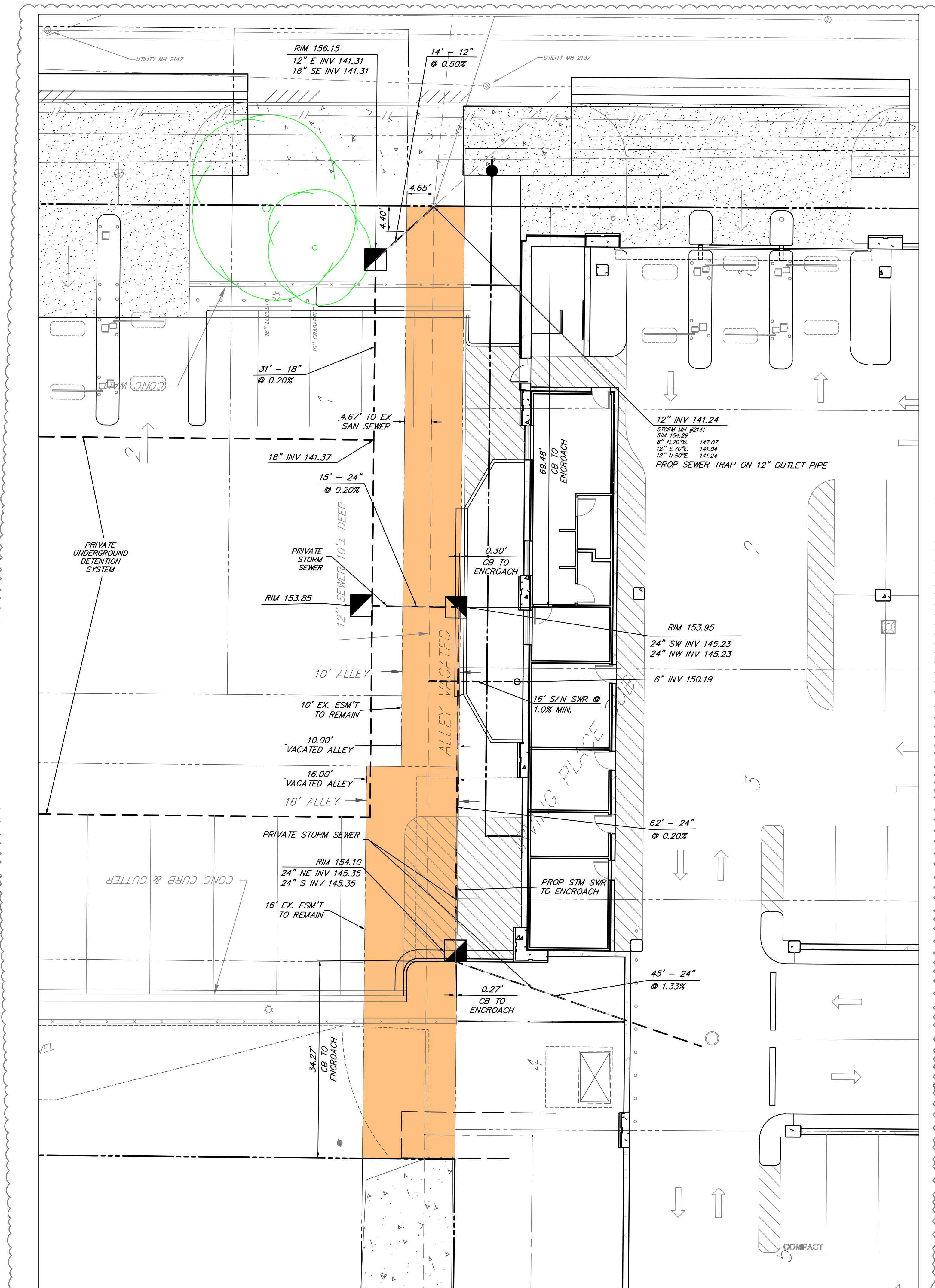
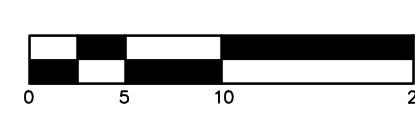
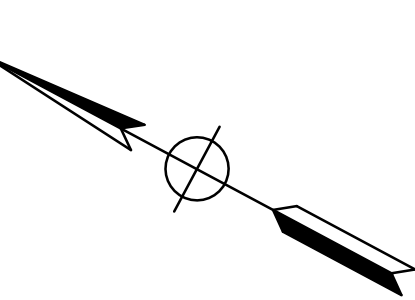
**UTILITY PLAN**  
HENRY FORD PARKING STRUCTURE  
ALLEY & EASEMENT EXHIBIT  
PALLISTER AVENUE

**Spicer group**  
SAGINAW OFFICE  
230 S. Washington Ave.  
Saginaw, MI 48607  
Tel. 989-754-4717  
Fax. 989-754-4440  
www.SpicerGroup.com

DE. BY: CAR	CH. BY: BMB	PROJECT NO.
DR. BY: CAR	APP. BY: JEW	1265145G2018
STDS.	SHEET 2 OF 3	C
DATE: JULY 30, 2021	FILE NO.	2
SCALE: 1" = 30'	D-5804-2	

RET. F.B. PG. ACAD FILE: PLOTTING SCALE:

PART OF BLOCK 3 & BLOCK 4  
 OF IRVING PLACE SUBDIVISION,  
 PART OF BLOCK 11,  
 SULLIVAN'S SUBDIVISION,  
 PART OF BLOCK 10 & BLOCK 11  
 OF BECK'S SUBDIVISION  
 T.01 S. - R.11 E.  
 CITY OF DETROIT  
 WAYNE COUNTY, MICHIGAN



**NOTES:**  
 EXISTING ALLEY TO BE VACATED,  
 SEWER EASEMENT TO REMAIN



CAR	REVISED PER CITY COMMENTS	8-23-21
CAR	REVISED PER CITY REVIEW	8-17-21
BY	MARK	REVISIONS DATE
<small>THE WORK REPRESENTED BY THIS DRAWING WAS DESIGNED BY THE ENGINEER FOR THIS SPECIFIC APPLICATION AND SPECIFIC LOCATION DESCRIBED HEREON IN ACCORDANCE WITH THE CONDITIONS PREVALENT AT THE TIME THE DESIGN WAS DONE. THE ENGINEER DOES NOT GUARANTEE AND WILL NOT BE LIABLE FOR ANY OTHER LOCATION, CONDITION, DESIGN OR PURPOSE.</small>		
<b>HOBBS &amp; BLACK ARCHITECTS</b> 100 NORTH STATE ANN ARBOR, MI 48104		
<b>UTILITY DETAIL</b> <b>HENRY FORD PARKING STRUCTURE</b> <b>ALLEY &amp; EASEMENT EXHIBIT</b> <b>PALLISTER AVENUE</b>		
<small>SAGINAW OFFICE          230 S. Washington Ave.          Saginaw, MI 48607          Tel. 989-754-4717          Fax. 989-754-4440          www.SpicerGroup.com</small>		
DE. BY: CAR	CH. BY: BMB	PROJECT NO. 126514SG2018
DR. BY: CAR	APP. BY: JEW	
STDS.	SHEET 3 OF 3	C
DATE JULY 30, 2021	FILE NO. D-5804-3	3
SCALE 1" = 10'		

RET. F.B. PG. ACAD FILE. PLOTTING SCALE.