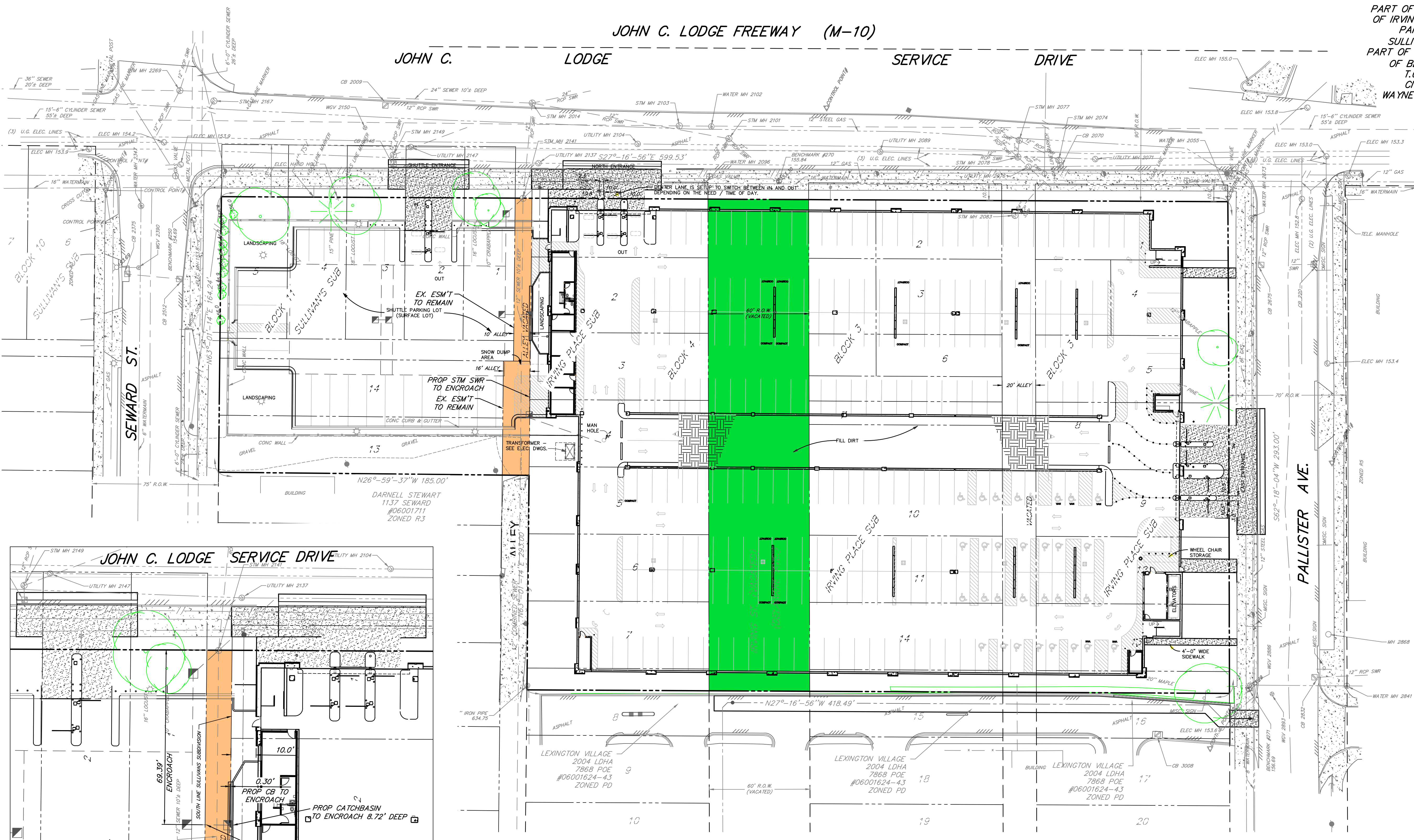
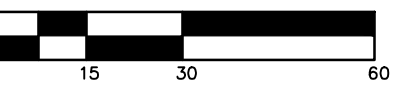
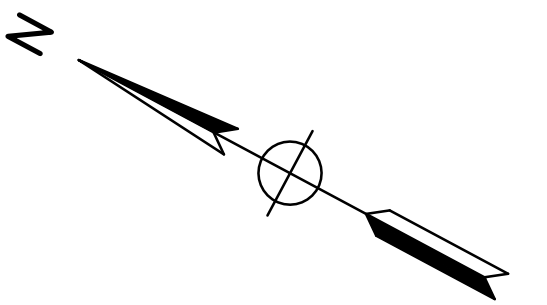


JOHN C. LODGE FREEWAY (M-10)

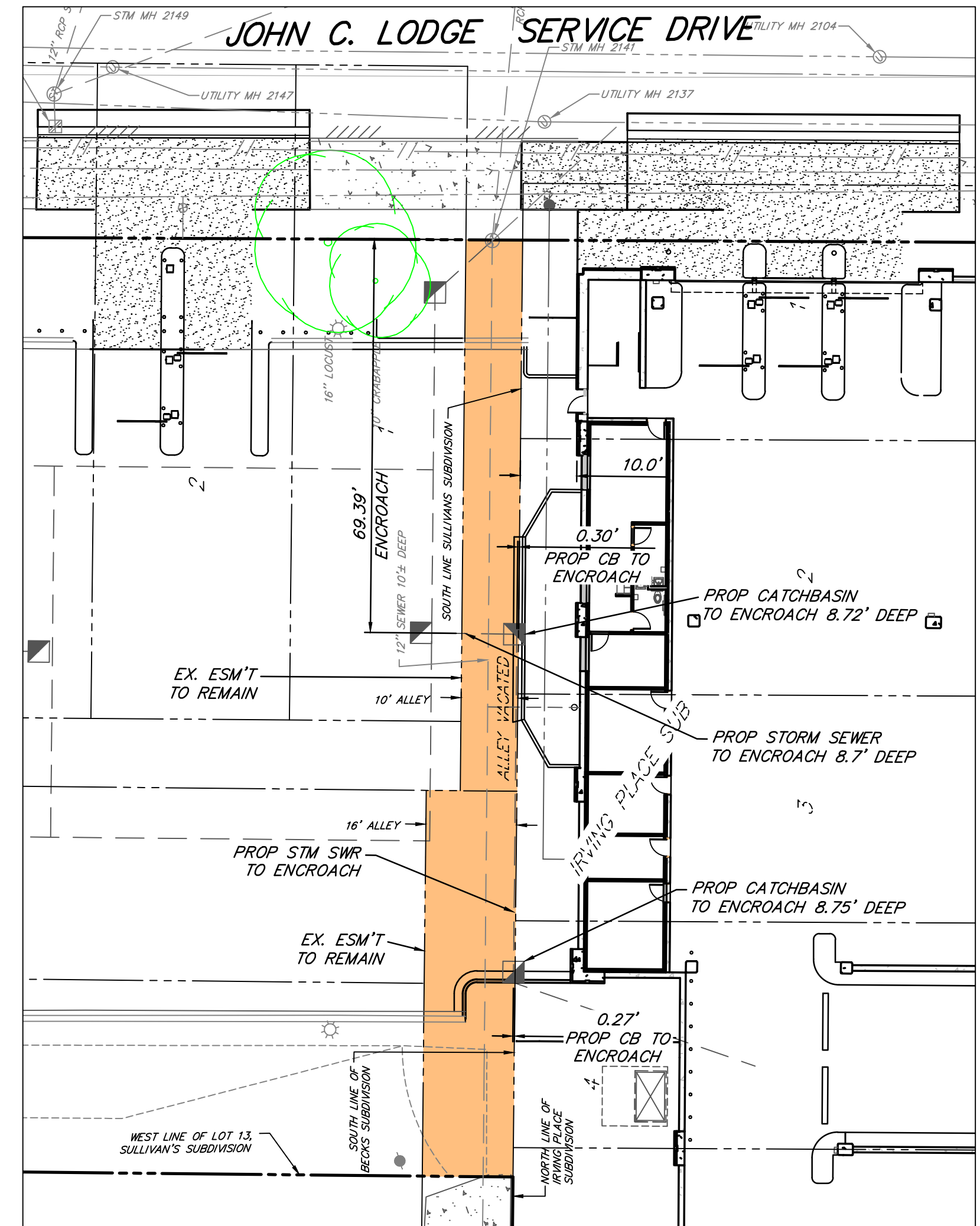
JOHN C. LODGE SERVICE DRIVE

PART OF BLOCK 3 & BLOCK 4
OF IRVING PLACE SUBDIVISION,
PART OF BLOCK 11,
SULLIVAN'S SUBDIVISION,
PART OF BLOCK 10 & BLOCK 11
OF BECK'S SUBDIVISION
T.01 S. - R.11 E.
CITY OF DETROIT
WAYNE COUNTY, MICHIGAN



NOTES:
EXISTING ALLEY TO BE VACATED,
SEWER EASEMENT TO REMAIN
EXISTING EASEMENT TO BE VACATED

THERE ARE NO AERIAL ENCROACHMENTS OF THE EXISTING
EASEMENT TO REMAIN IN PLACE.



EASEMENT DETAIL
SCALE: 1" = 20'

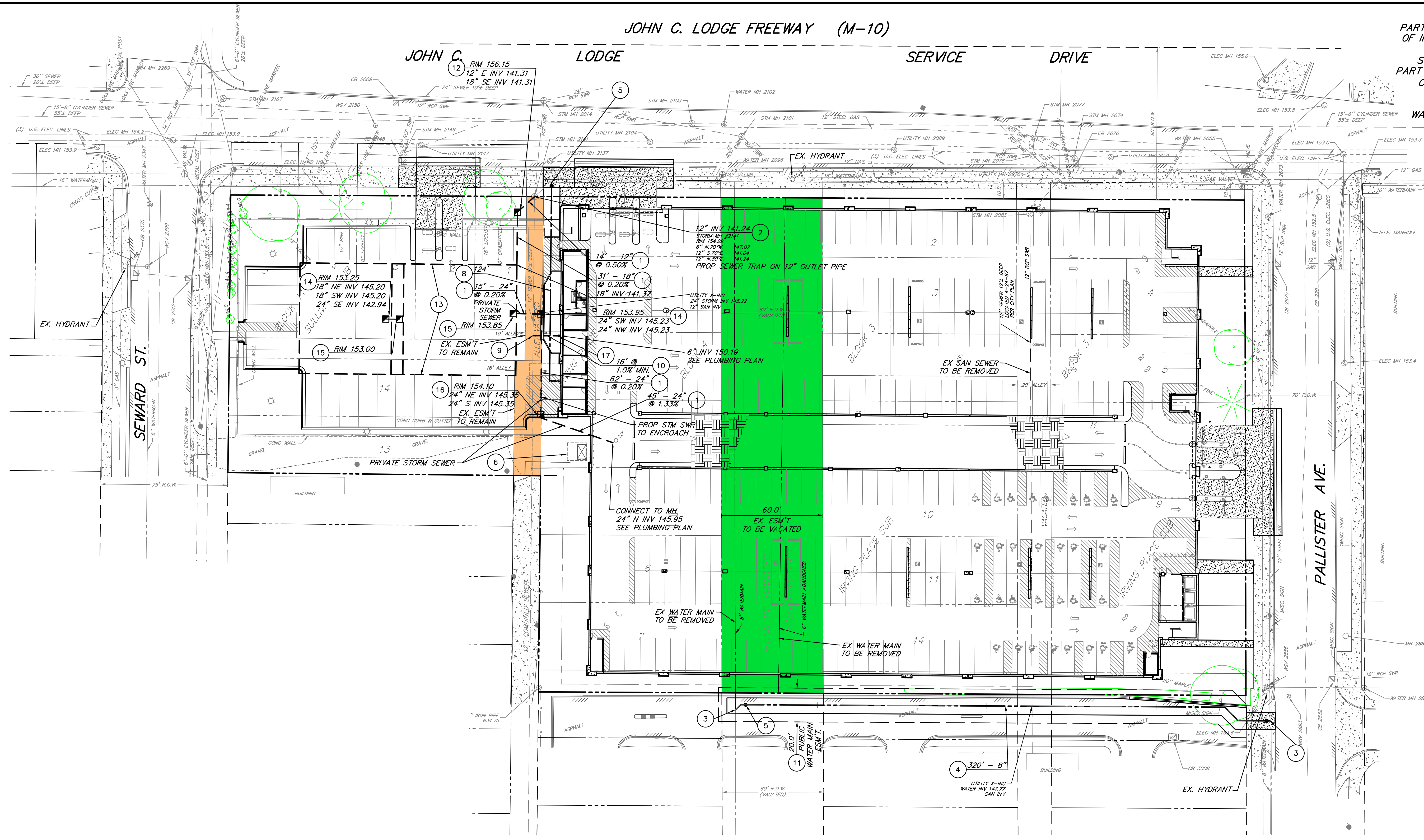
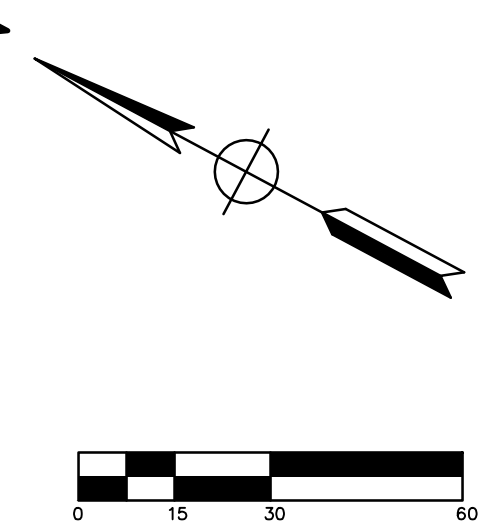
BY	MARK	REVISIONS	DATE
<p>THE WORK REPRESENTED BY THIS DRAWING WAS DESIGNED BY THE ENGINEER FOR THIS SPECIFIC APPLICATION AND SPECIFIC LOCATION DESCRIBED HEREIN IN ACCORDANCE WITH THE CONDITIONS PREVALENT AT THE TIME THE DESIGN WAS DONE. THE ENGINEER DOES NOT GUARANTEE AND WILL NOT BE LIABLE FOR ANY OTHER LOCATION, CONDITION, DESIGN OR PURPOSE.</p>			
<p>HOBBS & BLACK ARCHITECTS 100 NORTH STATE ANN ARBOR, MI 48104</p>			
<p>SITE PLAN HENRY FORD PARKING STRUCTURE ALLEY & EASEMENT EXHIBIT PALLISTER AVENUE</p>			
<p>Spicer group</p>		<p>SAGINAW OFFICE 230 S. Washington Ave. Saginaw, MI 48607 Tel. 989-754-4717 Fax: 989-754-4440 www.SpicerGroup.com</p>	
DE. BY:	CAR	CH. BY:	BMB
DR. BY:	CAR	APP. BY:	JEW
PROJECT NO.		126514SG2018	
STDS.	SHEET 1 OF 2		C
DATE	JULY 30, 2021	FILE NO.	D-5804-1
SCALE	1" = 30'		1

PLOTTING SCALE: RET. F.B. PG. ACAD FILE:

JOHN C. LODGE FREEWAY (M-10)

JOHN C. LODGE SERVICE DRIVE

PART OF BLOCK 3 & BLOCK 4
OF IRVING PLACE SUBDIVISION,
PART OF BLOCK 11,
SULLIVAN'S SUBDIVISION,
PART OF BLOCK 10 & BLOCK 11
OF BECK'S SUBDIVISION
T.O. S. - R.11 E.
CITY OF DETROIT
WAYNE COUNTY, MICHIGAN



- CONSTRUCTION NOTES**
- 1 STORM SEWER - REINFORCED CONC. PIPE (CLASS IV), TONGUE AND GROOVE PIPE W/PREMIUM WATER PROOF JOINTS USING A NEOPRENE "O" RING, ASTM C-443.
 - 2 CONNECT TO EXISTING STORM STRUCTURE.
 - 3 CONNECT TO EXISTING WATER MAIN, PER CITY OF DETROIT WATER & SEWER STANDARDS. THE EXISTING CONCRETE SHOULD BE REPLACED TO THE NEAREST JOINT IN THE DRIVE APPROACH ON BOTH SIDES OF THE TRENCH.
 - 4 WATER MAIN - DUCTILE IRON, CLASS 52, CEMENT LINED, POLYETHYLENE WRAPPED.
 - 5 WATER VALVE.
 - 6 ELECTRIC SERVICE LINE. EXACT LOCATIONS TO BE COORDINATED WITH UTILITY COMPANY.
 - 7 NOT USED.
 - 8 WATER SERVICE LEAD - 2" TYPE-K COPPER.
 - 9 CONNECT TO EXISTING SANITARY, PER CITY OF DETROIT WATER & SEWER STANDARDS.
 - 10 6" SANITARY LEAD - PVC, SDR23.5, TYPE PSM PLASTIC, CONFORMING TO ANSI/ASTM D3034 WITH RUBBER GASKET JOINTS.
 - 11 10' WATER MAIN EASEMENT, OWNER TO OBTAIN FROM LEXINGTON VILLAGE.
 - 12 STORMWATER CONTROL STRUCTURE.
 - 13 UNDERGROUND DETENTION SYSTEM - STORMTECH CHAMBER MC-4500 STORMWATER MANAGEMENT SYSTEM. - SEE STORM DETENTION DETAIL SHEET.
 - 14 STORMWATER QUALITY CATCHBASIN - ADS 48" HP MANHOLE, 30" STANDARD ROUND H2O GRATE, W/ADS BARRICUDA S4 UNIT.
 - 15 36" NYLOPLAST BASIN - SEE STORM DETENTION DETAIL SHEET.
 - 16 CATCHBASIN.
 - 17 CLEANOUT.
 - 18 NOT USED.
 - 19 NOT USED.

PARKING RAMP
SEE ARCHITECTURE PLANS FOR INTERIOR UTILITY INFORMATION FOR EACH LEVEL.

STORM WATER DETENTION
STORM WATER DETENTION IS TO BE HANDLED BY HENRY FORD HEALTH SYSTEM INSTALLING UNDERGROUND DETENTION.
REQUIRED WATER QUALITY VOLUME = 23,014 C.F.
REQUIRED FLOOD CONTROL VOLUME = 34,961 C.F.
REQUIRED TOTAL VOLUME = 34,961 C.F.
PROVIDED UNDERGROUND DETENTION VOLUME = 35,034 C.F.

NOTES:
EXISTING ALLEY TO BE VACATED,
SEWER EASEMENT TO REMAIN
EXISTING EASEMENT TO BE VACATED



BY	MARK	REVISIONS	DATE
THE WORK REPRESENTED BY THIS DRAWING WAS DESIGNED BY THE ENGINEER FOR THIS SPECIFIC APPLICATION AND SPECIFIC LOCATION DESCRIBED HEREIN IN ACCORDANCE WITH THE CONDITIONS PREVALENT AT THE TIME THE DESIGN WAS DONE. THE ENGINEER DOES NOT GUARANTEE AND WILL NOT BE LIABLE FOR ANY OTHER LOCATION, CONDITION, DESIGN OR PURPOSE.			
HOBBS & BLACK ARCHITECTS 100 NORTH STATE ANN ARBOR, MI 48104			
UTILITY PLAN HENRY FORD PARKING STRUCTURE ALLEY & EASEMENT EXHIBIT PALLISTER AVENUE			
		SAGINAW OFFICE 230 S. Washington Ave. Saginaw, MI 48607 Tel. 989-754-4717 Fax. 989-754-4440 www.SpicerGroup.com	
DE. BY:	CAR	CH. BY:	BMB
DR. BY:	CAR	APP. BY:	JEW
		PROJECT NO.:	1265145G2018
STDS.:	SHEET 2 OF 2		C
DATE:	JULY 30, 2021	FILE NO.:	D-5804-2
SCALE:	1" = 30'		2

PLOTTING SCALE: RET. F.B. PG. ACAD FILE: