

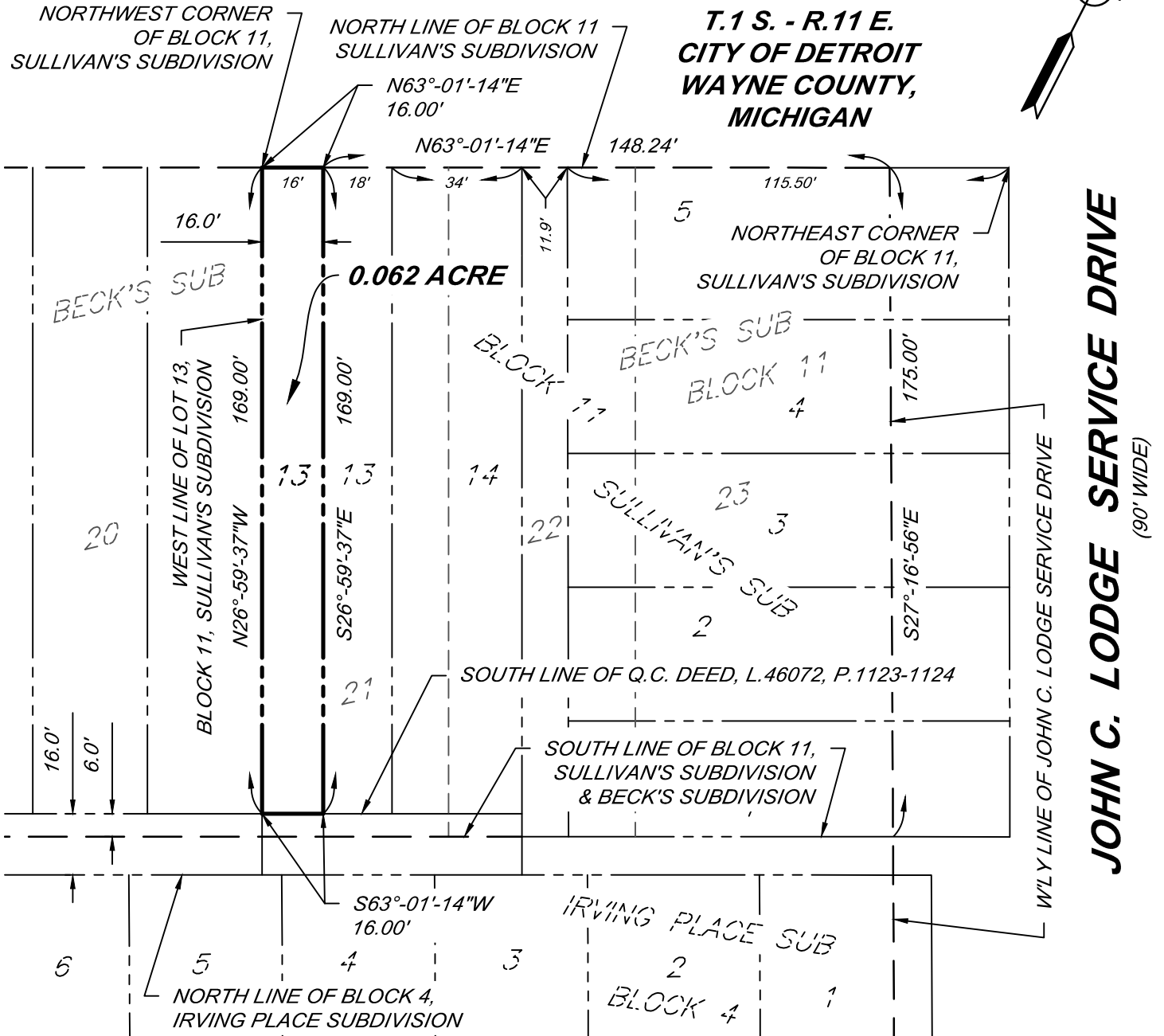
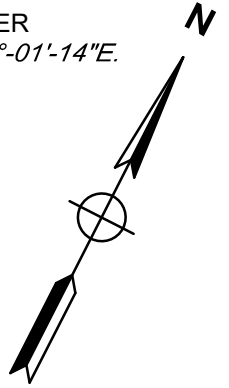
CERTIFICATE OF SURVEY

DWG. NO. A-28681-1

BEARINGS SHOWN ON THIS SURVEY WERE DETERMINED IN THE FOLLOWING MANNER
 THE NORTH LINE OF BLOCK 11, SULLIVAN'S SUBDIVISION WAS ASSUMED AS BEING N.63°-01'-14"E.

SEWARD ST.
 (75' WIDE)

**PART OF BLOCK 11,
 SULLIVAN'S SUBDIVISION
 & PART OF BLOCK 11,
 BECK'S SUBDIVISION
 T.1 S. - R.11 E.
 CITY OF DETROIT
 WAYNE COUNTY,
 MICHIGAN**



I hereby certify that I have surveyed and mapped the land above platted and/or described on 9/17/19, and the Relative Positional Precision (RPP) for each property corner shown hereon are within the limits accepted by the practice of Professional Surveying and that all of the requirements of P.A. 132 1970, as amended, have been complied with.

Eric S. Barden

Professional Surveyor No. 4001054049

Eric S. Barden

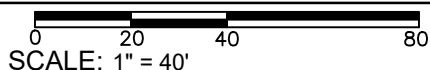


SURVEY FOR: Henry Ford Health System
 2799 West Grand Blvd.
 Detroit, Michigan 48202



230 S. Washington Ave.
 Saginaw, MI. 48607
 TEL (989) 754-4717
 FAX (989) 754-4440
 www.SpicerGroup.com

- ⊙ -FOUND SURVEY CORNER
- -SET 1/2" Ø IRON ROD WITH CAP No. 54049



JOB NO. 126514SG2018
 DWG. NO. A-28681-1

SHEET 1 OF 2

DATE: 8/12/21

CERTIFICATE OF SURVEY

DWG. NO. A-28681-2

BEARINGS SHOWN ON THIS SURVEY WERE DETERMINED IN THE FOLLOWING MANNER
THE NORTH LINE OF BLOCK 11, SULLIVAN'S SUBDIVISION WAS ASSUMED AS BEING N.63°-01'-14"E.

Parcel Description:

A parcel of land in part of Lot 21, of Block 11 of Beck's Subdivision of 1/4 Section 55, 10,000 Acre Tract, City of Detroit, Wayne County, Michigan, as recorded in Liber 15 of Plats on Page 69, Wayne County Records, and also part of Lot 13 of Sullivan's Subdivision, a replat of Lots 21 through 24, of Block 11 of Beck's Subdivision of 1/4 Section 55, 10,000 Acre Tract, City of Detroit, Wayne County, Michigan, as recorded in Liber 15 of Plats on Page 69, Wayne County Records.

More particularly described as follows: Beginning at the Northwest corner of said Lot 13 of Sullivan's Subdivision, a replat of Lots 21 through 24, of Block 11 of Beck's Subdivision of 1/4 Section 55, 10,000 Acre Tract, City of Detroit, Wayne County, Michigan, as recorded in Liber 15 of Plats on Page 69, Wayne County Records; thence N.63°-01'-14"E., on the North line of said Lot 13, 16.00 feet; thence S.26°-59'-37"E., parallel with the West line of said Lot 13, 169.00 feet to the South line of Quit-Claim Deed recorded in Liber 46072, Page 1123-1124, Wayne County Records; thence S.63°-01'-14"W., on said South line, 16.00 feet to said West line; thence N.26°-59'-37"W., on said West line, 169.00 feet to the point of beginning, containing 0.062 acre of land and subject to any easements of record.

I hereby certify that I have surveyed and mapped the land above platted and/or described on 9/17/19, and the Relative Positional Precision (RPP) for each property corner shown hereon are within the limits accepted by the practice of Professional Surveying and that all of the requirements of P.A. 132 1970, as amended, have been complied with.



Eric S. Barden

Professional Surveyor No. 4001054049

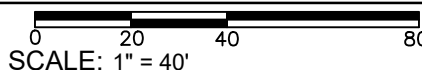


SURVEY FOR: Henry Ford Health System
 2799 West Grand Blvd.
 Detroit, Michigan 48202



230 S. Washington Ave.
 Saginaw, MI. 48607
 TEL (989) 754-4717
 FAX (989) 754-4440
 www.SpicerGroup.com

- ⊙ -FOUND SURVEY CORNER
- -SET 1/2" Ø IRON ROD WITH CAP No. 54049



JOB NO. 126514SG2018
 DWG. NO. A-28681-2