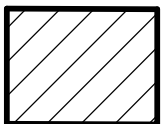
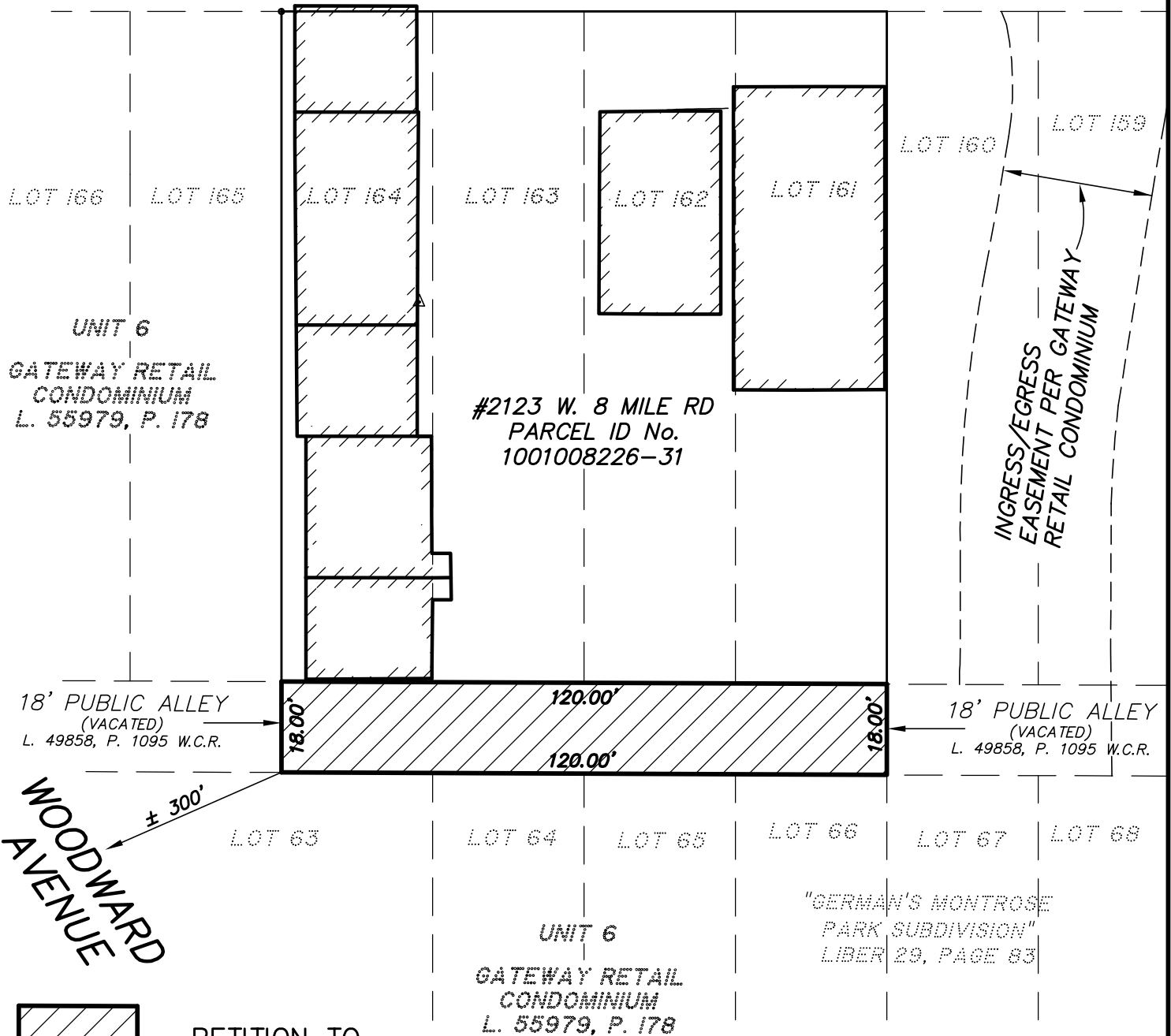


# REQUEST FOR PETITION OF ALLEY VACATION

VACATION OF EAST-WEST ALLEY BOUND ON EAST, SOUTH, AND WEST BY UNIT 6 OF "GATEWAY RETAIL CONDOMINIUM. BOUND ON NORTH BY SOUTH LINE OF LOTS 161-164 OF "GERMAN'S MONTROSE PARK SUBDIVISION".

## EIGHT MILE ROAD



- PETITION TO BE VACATED



0    15    30  
SCALE: 1" = 30'

**MERIDIAN**  
LAND SURVEYING

601 S. GRAND TRAVERSE ST  
FLINT, MI 48502  
TEL: 810-339-6605  
info@meridianls.com

DATE: 07-07-2021

FLD/OFCE: JRM/GMM

JOB No. 2019099

SHEET: 1 of 1