

# Permit Request

Troyer Group  
Project Permitting  
1506 Magnavox Way, Suite 100  
Fort Wayne, IN 46804

## Revision 2

### City of Detroit

Coleman A. Young Municipal Center  
2 Woodward Ave, Suite 642  
Detroit, MI 48226

To whom it may concern,

MCI Metro Access Transmission Services Corp. (hereinafter "MCI") has been granted a Metro Act Permit in your municipality to install fiber optic facilities within the public rights of way (Placing new conduit and fiber using directional bore/ to install new aerial on existing utility poles).

MCI has authorized Henkels & McCoy as agent, per the enclosed Letter of Authorization. Henkels & McCoy has authorized the undersigned as agent for permitting. The undersigned hereby submits the enclosed documents:

1. Permit Information letter
2. Authorizations
3. Proposed project prints
4. Traffic control plans
5. Completed application form

Please contact the undersigned with any questions regarding this application, engineering design or fees/certificate of insurance/bond needs.



Purpose: This portion will present the required information for obtaining construction permit within city of Detroit right-of-way. As requested within the documentation found on the Detroit website: <https://detroitmi.gov/departments/department-public-works>

**Applicant information:**

MCI Metro Access Transmission Services Corp

21500 Melrose Ave.

Southfield, MI 48075

Representative: John Irving

[john.t.irving@version.com](mailto:john.t.irving@version.com) – (313)-220-8688

**Client Information:**

Henkels & McCoy, Inc

42180 Ford Rd Suite 101

Canton, MI 48187

Representatives: Kathryn Chappell & Terrance Spryszak

[Permitting-team@henkels.com](mailto:Permitting-team@henkels.com) – (734)-725-8710

**Purpose/Scope of work:** Fiber Distribution Hub installation

**Justification of time frame:** To provide optional services to the surrounding area within a timely manner

130 June 2020 – 30 Jan 2021; Monday – Friday; 8 A.M. – 4 P.M.

**Job site area information:** 30' Roadway width, 2-way traffic on Goethe St , 5' Sidewalks, residential area

**Occupancy:** Partial of south ROW of Goethe St and east ROW of St Clair St (No road closures or detour required), Westbound lane occupied by installation trucks, southern sidewalk closure on Goethe St and Eastern sidewalk closure on St Clair St

**Impact to transit buses:** None

**Truck Route:** Exit 220B from E Edsel Ford Fwy, southeast on Conner St, southwest on Mack Ave, south on Harding St, west on Goethe St to the St Clair intersection – No material deliveries needed

**Project location:** Not within Detroit People Mover or Trolley track areas

**Signatures:** See attached documentation for authorizations and signatures.

Gregg Diamond  
Franchisee & Right-of-Way Group

**verizon**✓

Mail Code: HQE02E90  
600 Hidden Ridge  
Irving, TX 75038  
work: 469-262-7369  
cell: 817-455-8643  
[gregg.diamond@verizon.com](mailto:gregg.diamond@verizon.com)

March 25, 2018

Subject: Letter of Authorization

To Whom It May Concern:

MCImetro Access Transmission Services Corp. d/b/a Verizon Access Transmission Services ("Verizon") hereby authorizes Henkels & McCoy, and specifically Kathryn Chappell, Henkels and McCoy's Project Coordinator, acting as local permitting agent to sign and submit permit applications and sign for Approved Permits on behalf of MCImetro Access Transmission Services Corp., for the installation of telecommunications facilities within the public rights-of-way.

Please let me know if there is anything else you might need.

Sincerely,



Gregg Diamond  
Right-of-Way Specialist  
Verizon Enterprise Solutions

# HENKELS & MCCOY

September 22, 2019

To Whom It May Concern:

Henkels & McCoy, Inc. ("H&M") hereby authorizes Direct Line Communications, Inc. acting as local permitting agents to sign and submit permit applications on behalf of Henkels & McCoy, Inc. and its Principal, MCImetro Access Transmission Services Corp., a wholly owned subsidiary of Verizon Communications Inc., for the installation of telecommunications facilities within the public rights-of-way.

Please let me know if there is anything else you might need.

Sincerely,

A handwritten signature in black ink, appearing to be 'JJ', written in a cursive style.

Jon Joynson  
Director-Central Telecom  
Henkels & McCoy, Inc.

**Corporate Office**

917 Union St.  
Mishawaka, IN 46544-5373  
Phone: 574.272.9814  
Fax: 574.272.5754

September 22, 2019

To Whom It May Concern:

Direct Line Communications, Inc. (DLCI) hereby authorizes Troyer Group to act as local permitting agent to sign and submit permit applications on behalf of Direct Line Communications, Inc., a contractor to Henkel & McCoy, Inc. (H&M), and H&M's Principal, MCI metro Access Transmission Services Corp., a wholly owned subsidiary of Verizon Communications Inc., for the purpose of installing telecommunications facilities within the public rights-of way.

Please let me know if there is anything else you might need.

Sincerely,

A handwritten signature in black ink that reads "Robert G. White". The signature is written in a cursive, flowing style.

Robert G. White

Vice President



# MCI METRO - FIBER BUILD

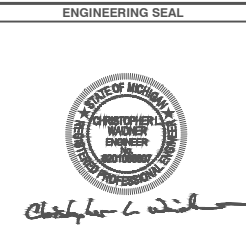
DETROIT, MI

PERMIT: FDH PERMIT POLETOWN H1001\_0001

NEAREST INTERSECTION: GOETHE STREET AND ST CLAIR STREET



PROPRIETARY INFORMATION  
THE INFORMATION CONTAINED ON THIS DRAWING IS PROPRIETARY BY NATURE. ANY USE OR DISCLOSURE OTHER THAN THAT WHICH RELATES TO CARRIER SERVICES IS STRICTLY PROHIBITED.



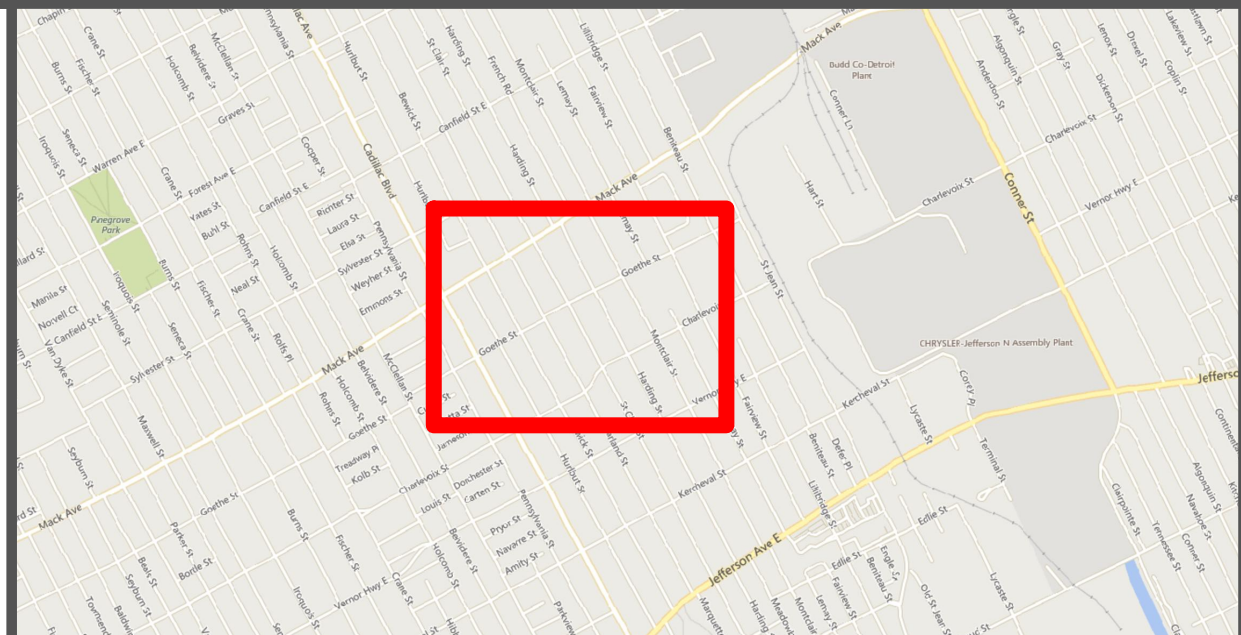
## SHEET INDEX

- T1 TITLE PAGE
- D1 DETAIL DRAWING
- P1 PLAN SHEET

## LEGEND

ELECTRIC UTILITY		<b>E</b>	PROPOSED AERIAL	
GAS UTILITY		<b>G</b>	OVERHEAD GUY	
LOW VOLTAGE UTILITY		<b>L</b>	PROPOSED CONDUIT	
FIBER OPTIC		<b>F</b>	UTILITY POLE	
SEWAGE & STORMWATER UTILITY		<b>S</b>		
TELEPHONE UTILITY		<b>T</b>		
UNKNOWN UTILITY		<b>U</b>		
WATER UTILITY		<b>W</b>		

## VICINITY MAP



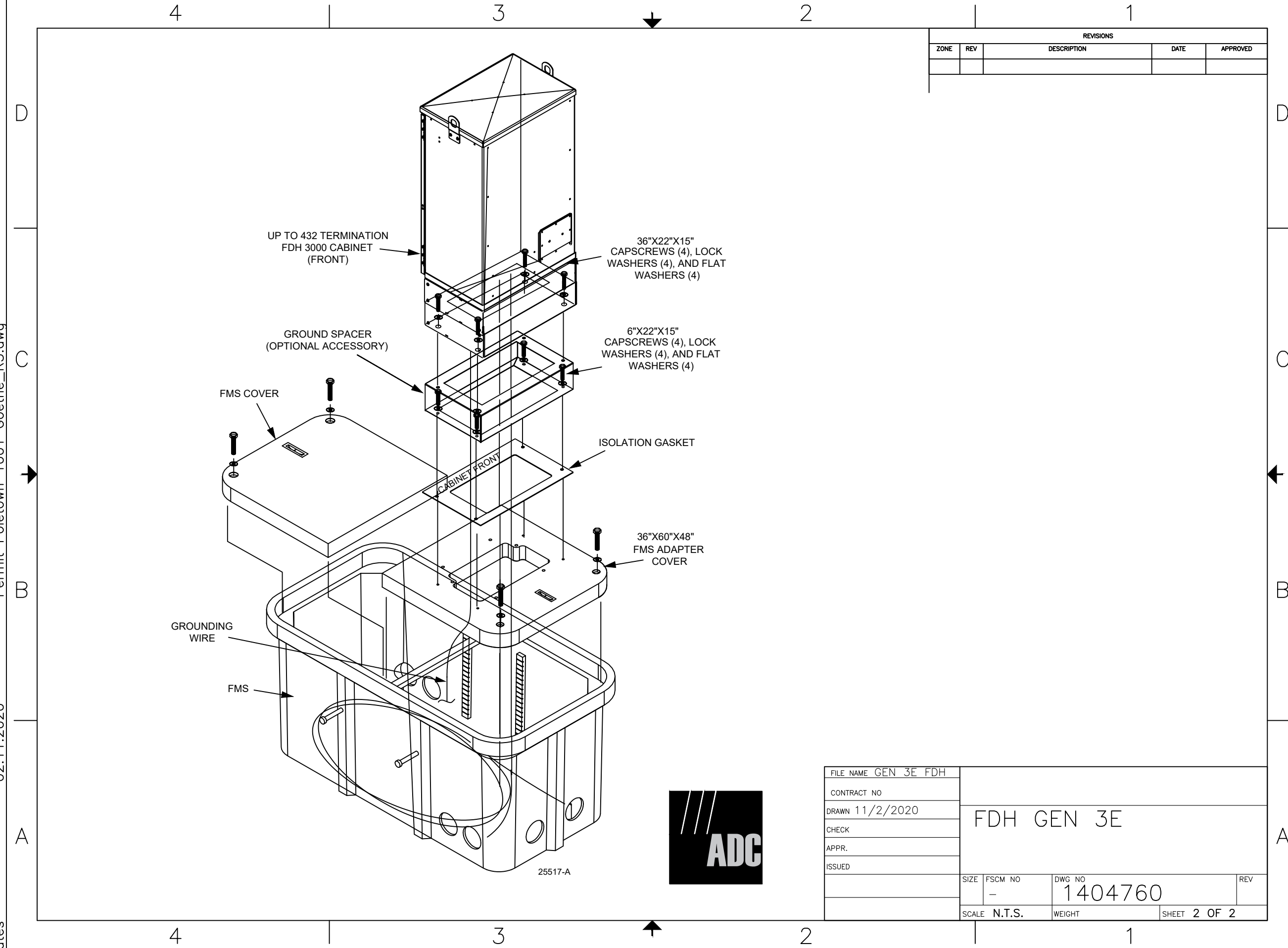
REV	DATE	DESCRIPTION	APPR BY DRN BY										
			BTB	JFH	ADB	JJF	ADB	ADB					
1	03/23/2020	RELEASED FOR SUBMISSION						*	*	*	*	*	*
2	06/10/2020	RELEASED FOR SUBMISSION						*	*	*	*	*	*
3	11/02/2020	REVISIONS PER CITY OF DETROIT						*	*	*	*	*	*

REVISION:	<b>R3-11/02/2020</b>
SHEET NAME:	TITLE PAGE
LOCATION:	DETROIT, MI
SHEET SIZE:	ANSI FULL BLEED B (11.00 X 17.00 INCHES)
SCALE:	N.T.S.
SHEET:	T1

Permit Poletown 1001 Goethe\_R3.dwg

02.11.2020

abates



REVISIONS				
ZONE	REV	DESCRIPTION	DATE	APPROVED

FILE NAME	GEN 3E FDH			
CONTRACT NO				
DRAWN	11/2/2020			
CHECK				
APPR.				
ISSUED				
	SIZE	FSCM NO	DWG NO	REV
		-	1404760	
	SCALE	N.T.S.	WEIGHT	SHEET 2 OF 2



OWNER

PRIME CONTRACTOR

ENGINEERING FIRM

PROPRIETARY INFORMATION  
THE INFORMATION CONTAINED ON THIS PRINT IS PROPRIETARY BY NATURE. ANY USE OR DISCLOSURE OTHER THAN THAT WHICH RELATES TO CARRIER SERVICES IS STRICTLY PROHIBITED.

ENGINEERING SEAL

APPR BY DRN BY

	JLH	ADB					
	JJF	JJF					

DESCRIPTION

	RELEASED FOR SUBMISSION						
	RELEASED FOR SUBMISSION						
	REVISIONS PER CITY OF DETROIT						

REVISIONS


REVISION: R3-11/02/2020

SHEET NAME: FDH DETAIL DRAWING

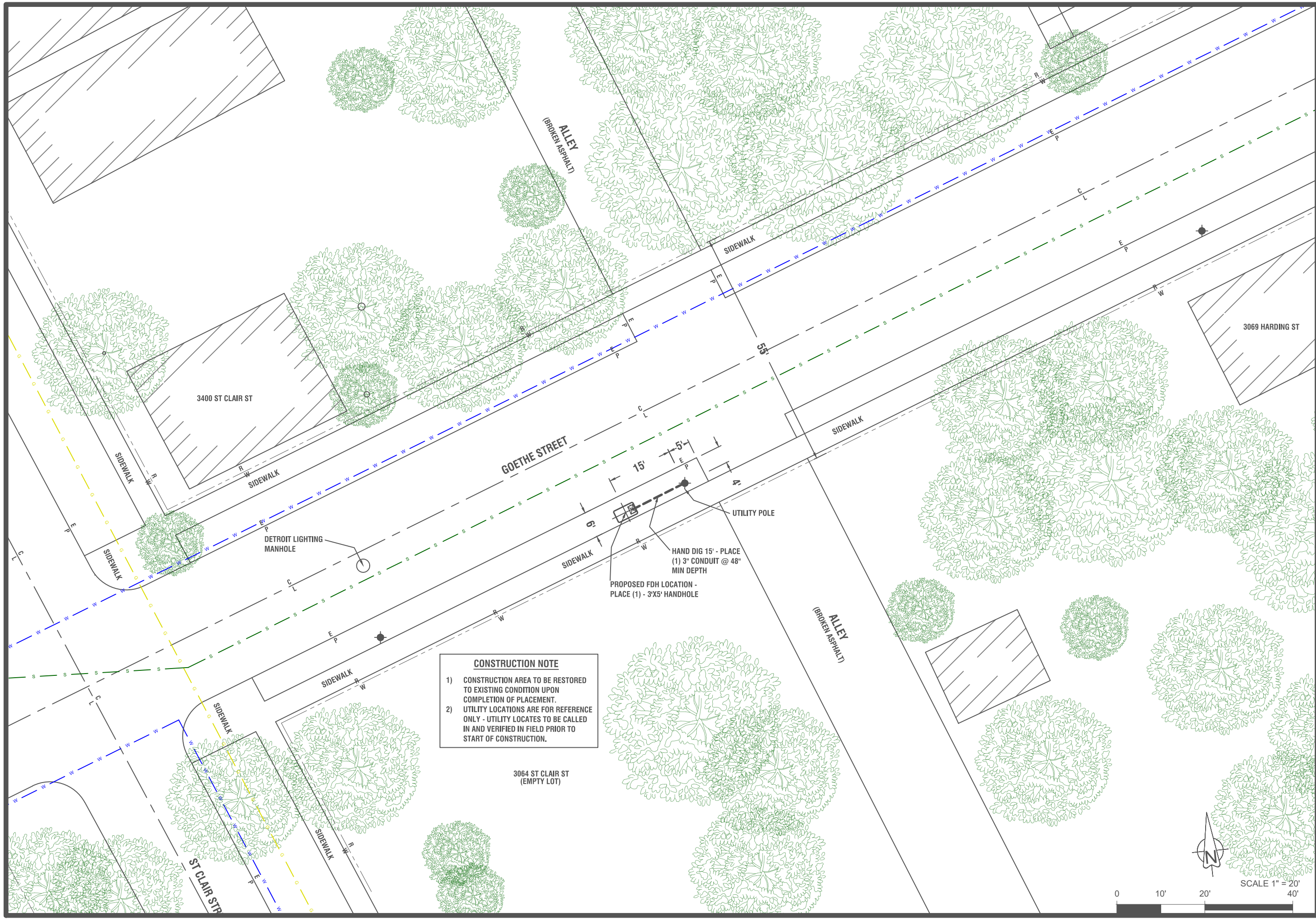
LOCATION: DETROIT, MI

SHEET SIZE: ANSI FULL BLEED B (11.00 X 17.00 INCHES)

SCALE: 1" = 20'

SHEET: D1





**CONSTRUCTION NOTE**

- 1) CONSTRUCTION AREA TO BE RESTORED TO EXISTING CONDITION UPON COMPLETION OF PLACEMENT.
- 2) UTILITY LOCATIONS ARE FOR REFERENCE ONLY - UTILITY LOCATES TO BE CALLED IN AND VERIFIED IN FIELD PRIOR TO START OF CONSTRUCTION.

OWNER  
**MCL**  
 ACCESS TRANSMISSION SERVICES CORP.

PRIME CONTRACTOR  
**A&M**  
 HENKEL & MCCOY

ENGINEERING FIRM  
 trayer group

**811**

PROPRIETARY INFORMATION  
 THE INFORMATION CONTAINED ON THIS DRAWING IS PROPRIETARY BY NATURE. ANY USE OR DISCLOSURE OTHER THAN THAT WHICH RELATES TO CARRIER SERVICES IS STRICTLY PROHIBITED.

ENGINEERING SEAL  
  
 Christopher L. White

REV	DATE	DESCRIPTION	APPR BY	DRN BY
1	03/23/2020	RELEASED FOR SUBMISSION	JLH	JLH
2	06/10/2020	RELEASED FOR SUBMISSION	JJF	ADB
3	11/02/2020	REVISIONS PER CITY OF DETROIT	JJF	ADB
			*	*
			*	*
			*	*
			*	*

REVISIONS

**R3-11/02/2020**

SHEET NAME:  
 FDH DETAIL

LOCATION:  
 DETROIT, MI

SHEET SIZE:  
 ANSI FULL BLEED B (11.00 X 17.00 INCHES)

SCALE:  
 1" = 20'

SHEET:  
**P1**

