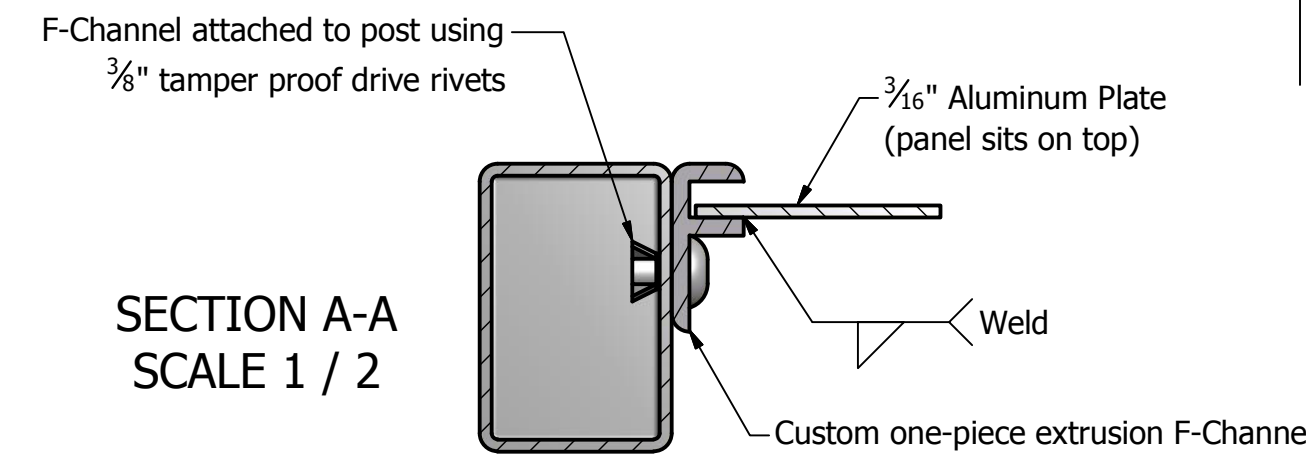
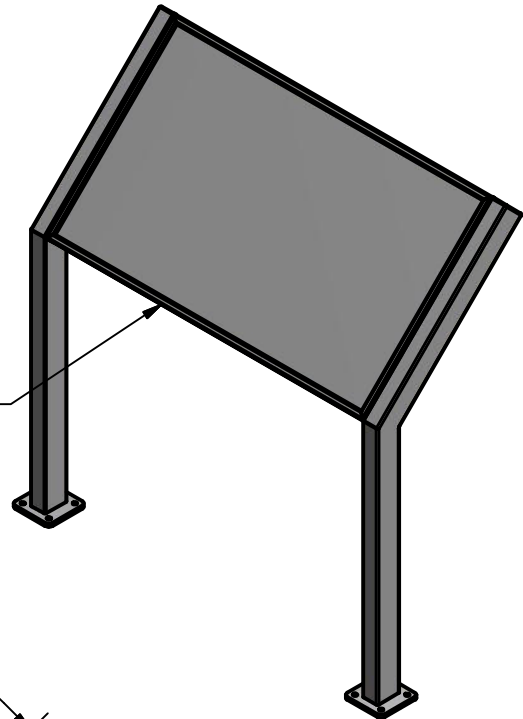
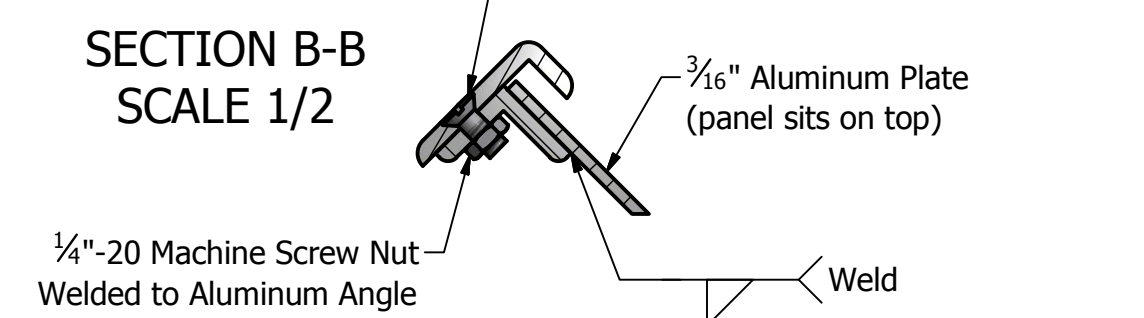


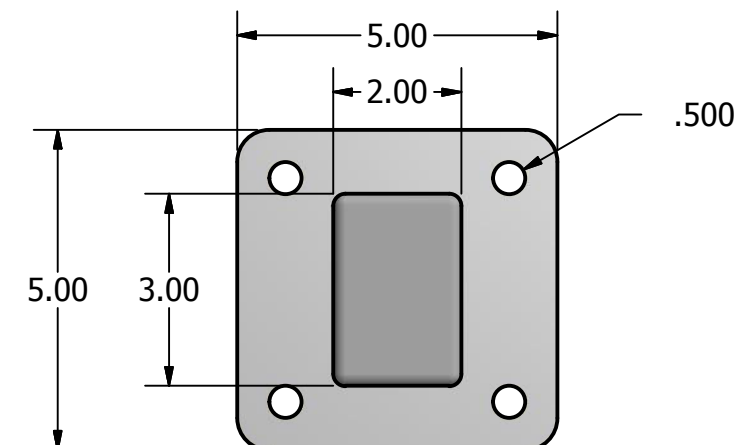
Frame has weep holes drilled along bottom for water drainage



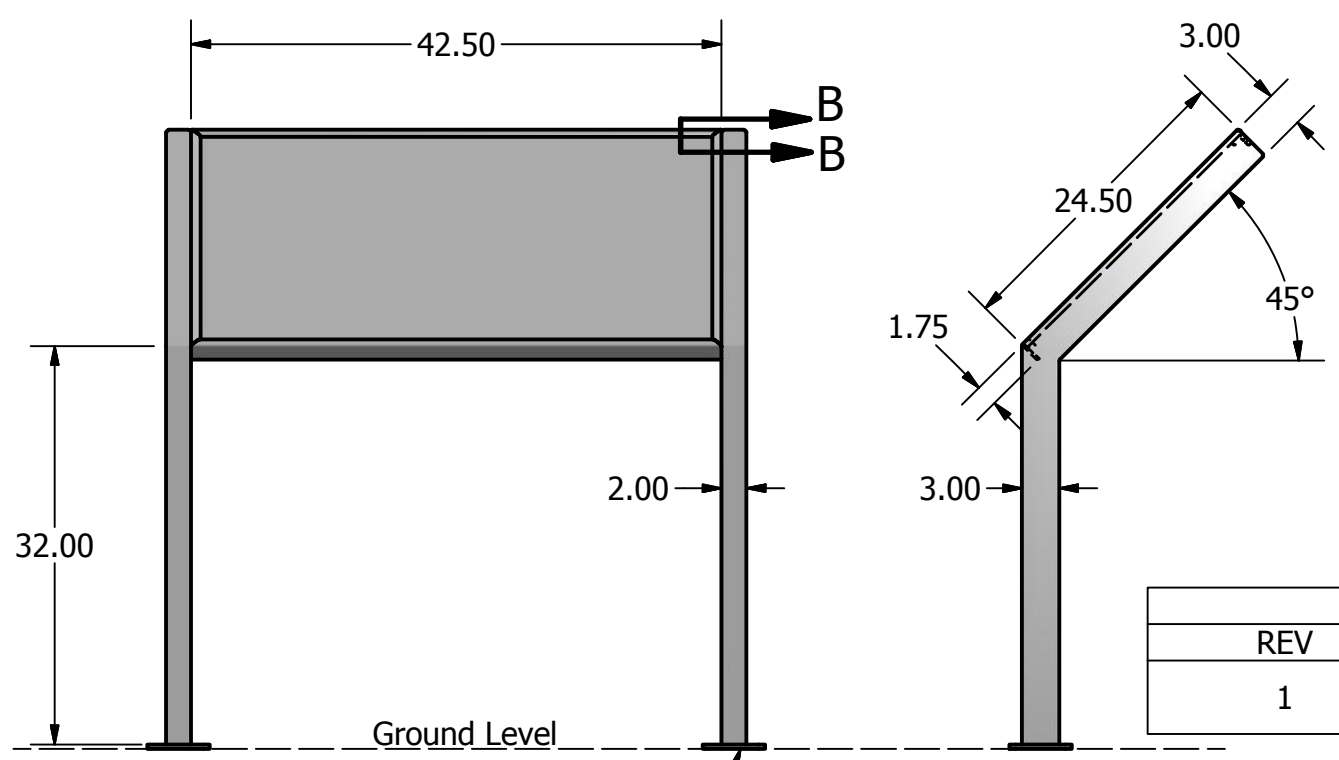
SECTION A-A  
SCALE 1 / 2



SECTION B-B  
SCALE 1/2



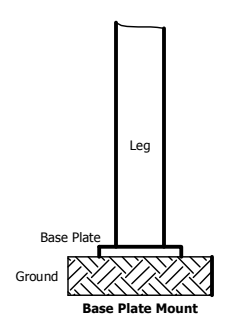
BASEPLATE DETAIL



REVISION HISTORY		
REV	DESCRIPTION	DATE
1	Changed to Baseplate Mount	5/18/2021

5" x 5" 3/8" Thick Aluminum Baseplate (See Detail)

HARDWARE INCLUDED		
Type	QTY	Image
3/8" Aluminum Drive Rivets	6 each	
1/4"-20 x 5/8" Flat Head Phillips Screws	3 each	

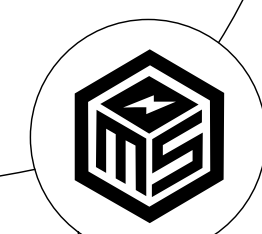


**Low Profile Exhibit Base Media Swing**

**Frame Size:** 42.5"w x 24.5"h  
**Trim Size:** 41.875"w x 23.875"h  
**Visual Area:** 41"w x 23"h  
**Frame Color:** PMS 2370C  
**Finish:** Satin

- Approved As Is
- Make Changes and Proceed
- Make Changes and Resubmit

CUSTOMER SIGNATURE



Media Swing, LLC  
 50400 Dennis Ct, Unit D  
 Wixom, MI 48393  
 www.mediaswing.com

**Job #**  
**97761**

**Qty:**  
**8**

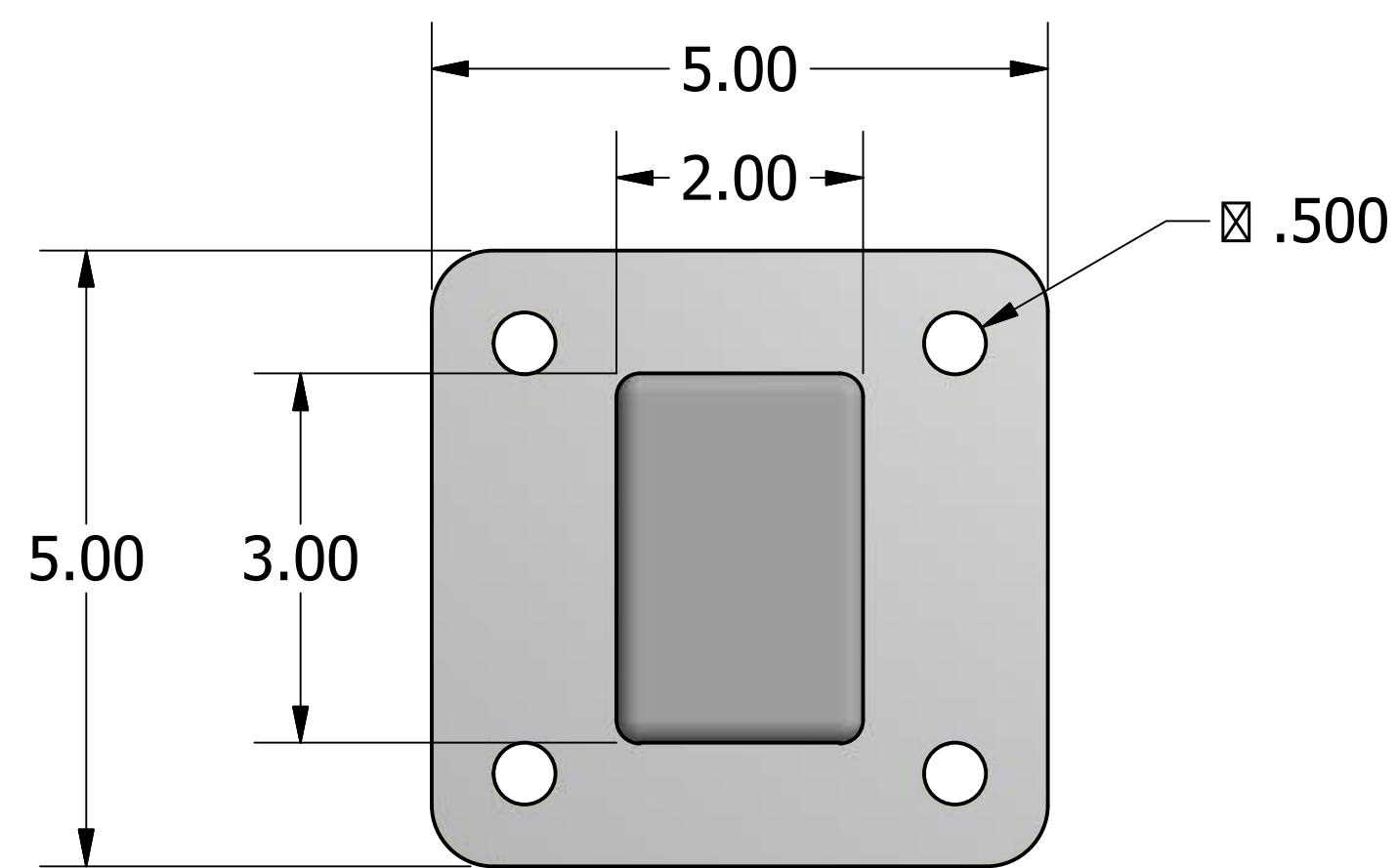
**Date:**  
 05/12/2021

**Rev. #:**  
 1

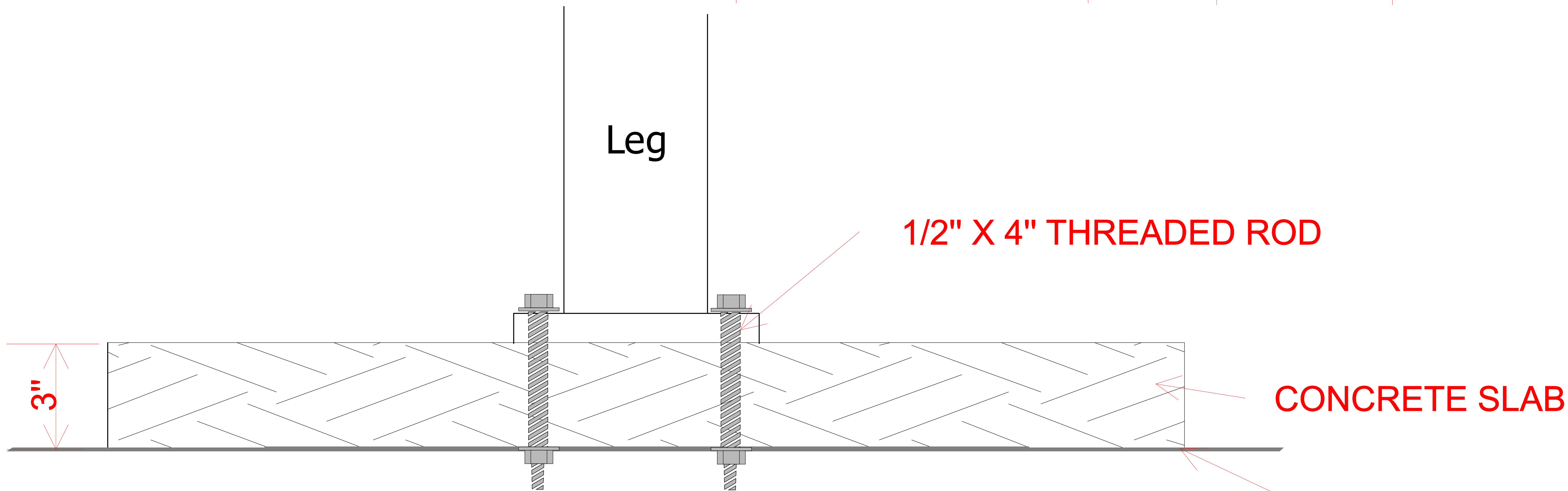
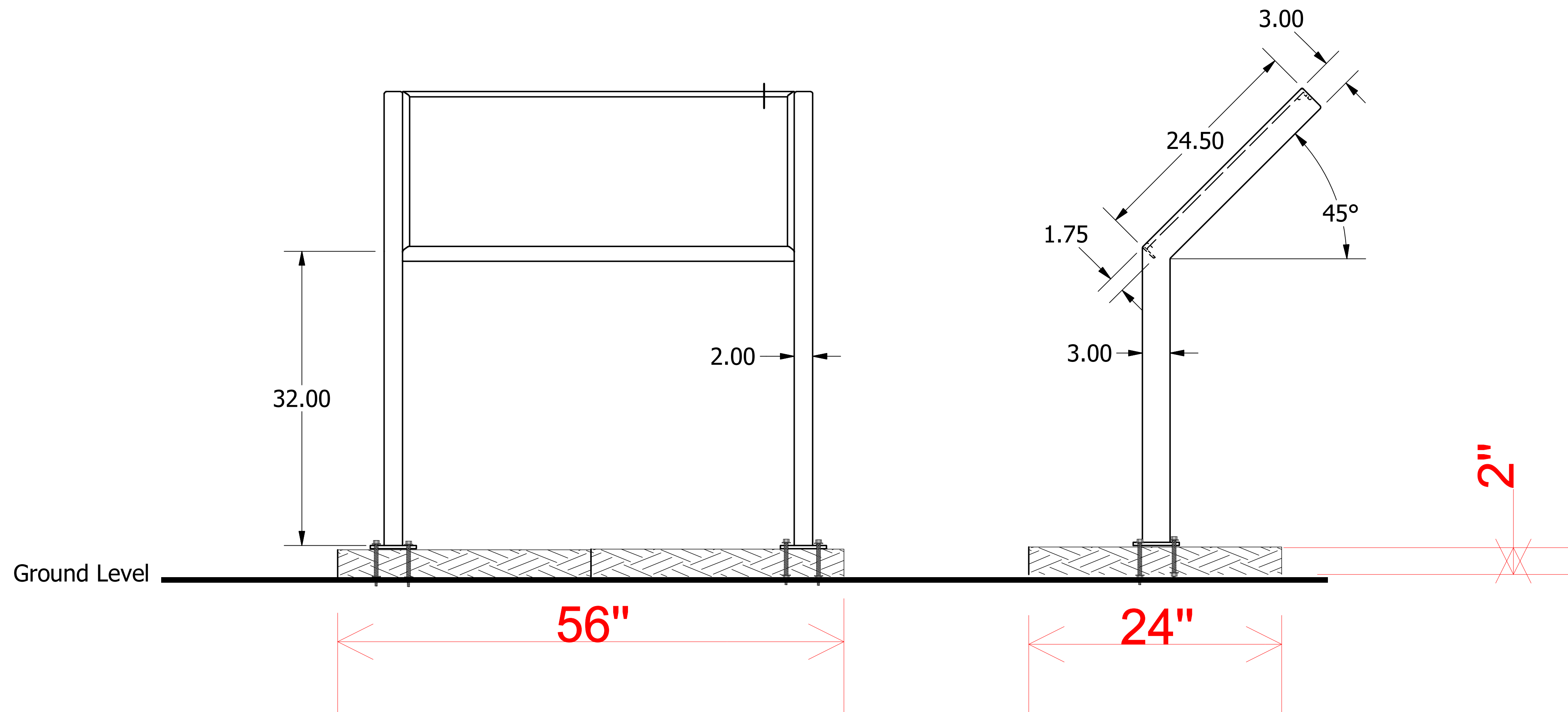
**Drawn By:**  
 000

\* Post holes should be dug below the frost line depth. Mediaswing recommends height from ground to bottom of frame to be 32"

Due to variance in installation methods, baseplate hardware is NOT included



BASEPLATE DETAIL



**56" X 24" X 2" 237 LB CAST CONCRETE SLAB REINFORCED WITH MESH**

**GRADE**