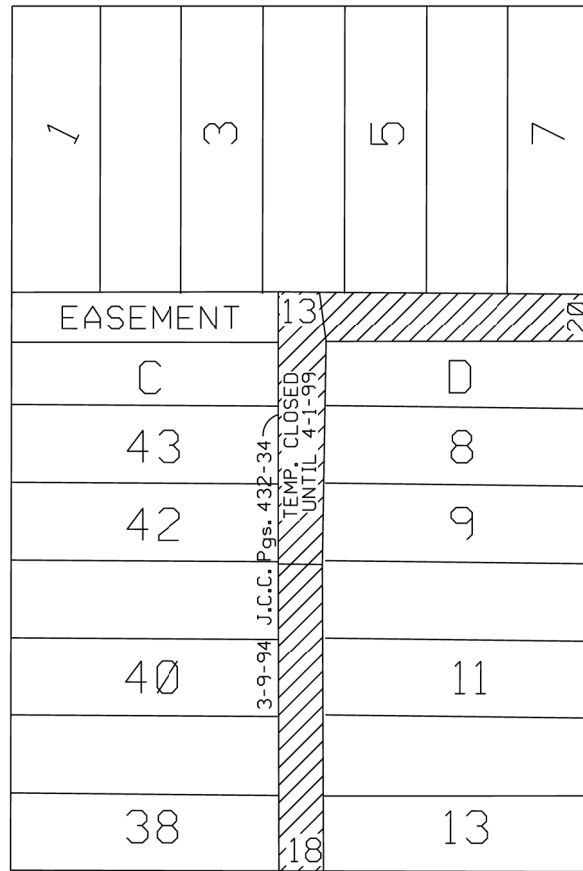




E. GRAND BLVD 150 FT. WD.

CANTON AVE. 66 FT. WD.



HELEN AVE. 60 FT. WD.

PALMER AVE. 60 FT. WD.



- CONVERSION TO UTILITY EASEMENT

(FOR OFFICE USE ONLY)

CARTO: 48 C

B					
A					
DESCRIPTION	DRWN	CHKD	APPD	DATE	
REVISIONS					
DRAWN BY	SA	CHECKED	JD		
DATE	06-15-2021	APPROVED			

CONVERSION TO UTILITY EASEMENT
 THE NORTH/SOUTH PUBLIC ALLEY
 IN THE BLOCK BOUND BY
 CANTON AVE., E. GRAND BLVD,
 HELEN AVE. AND PALMER AVE.

CITY OF DETROIT
 CITY ENGINEERING DIVISION
 SURVEY BUREAU

JOB NO. 01-01

DRWG. NO.