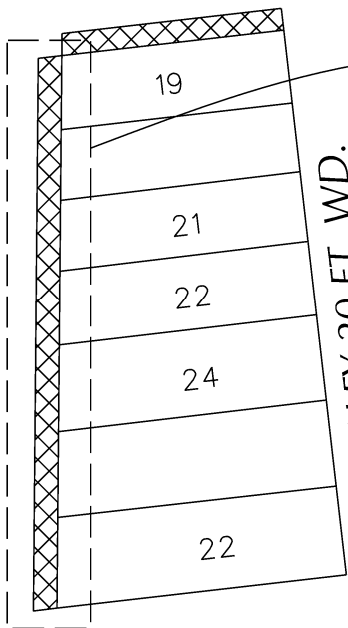


PETITION NO. 1492
 THE AUBURN, LLC.
 1117 GRISWOLD STREET, SUITE 1416
 DETROIT, MI 48207

CANFIELD AVE 60 FT. WD.

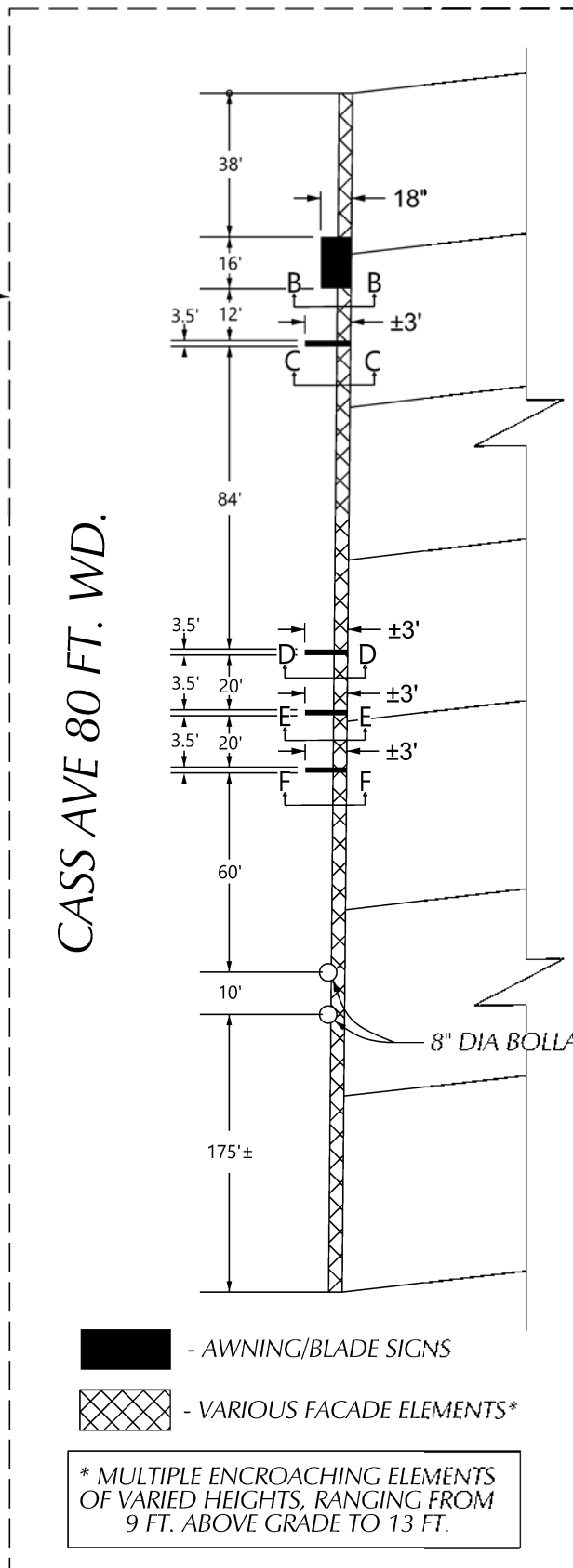
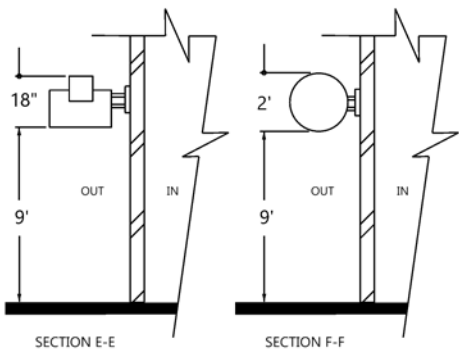
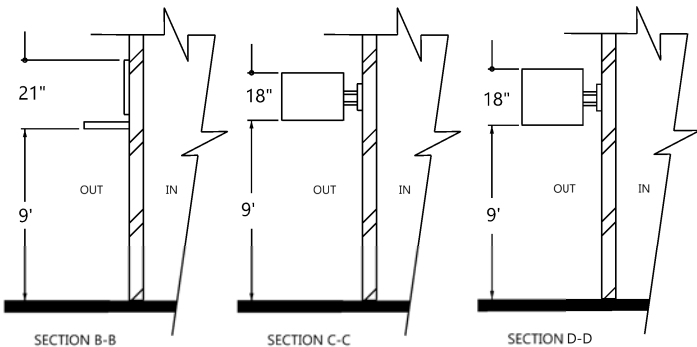
CASS AVE 80 FT. WD.



ALLEY 20 FT. WD.



WILLIS AVE 100 FT. WD.



- AWNING/BLADE SIGNS
- VARIOUS FACADE ELEMENTS*

* MULTIPLE ENCROACHING ELEMENTS OF VARIED HEIGHTS, RANGING FROM 9 FT. ABOVE GRADE TO 13 FT.

(FOR OFFICE USE ONLY)

CARTO 30 E

B					
A	DRAWING REVISIONS FOR SPACE, REMOVAL OF CERTAIN ELEMENTS	KJ	JD	01-11-22	
DESCRIPTION		DRWN	CHKD	APPD	DATE
REVISIONS					
DRAWN BY	KJ	CHECKED		SA	
DATE	9-21-21	APPROVED		JD	

REQUEST FOR MULTIPLE ENCROACHMENTS INTO WEST CANFIELD, BETWEEN CASS AVE AND WOODWARD AVE, AND EAST CASS, BETWEEN CANFIELD AND WILLIS AVE

CITY OF DETROIT
 CITY ENGINEERING DIVISION
 SURVEY BUREAU

JOB NO. 01-01

DRWG. NO. 01-02