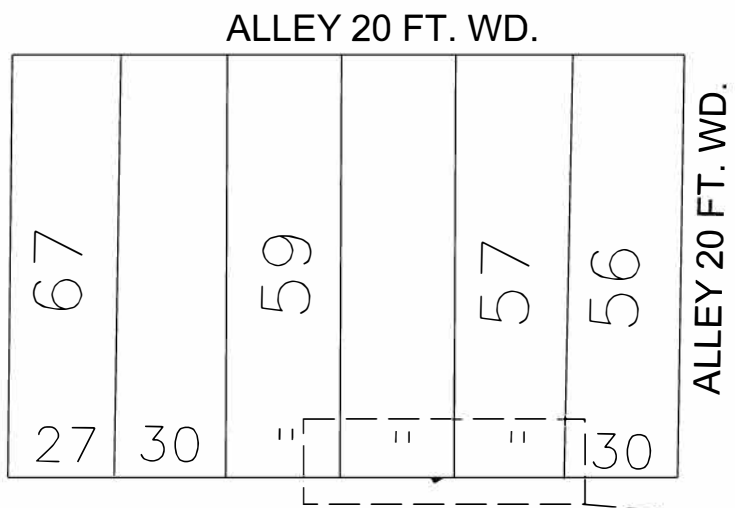
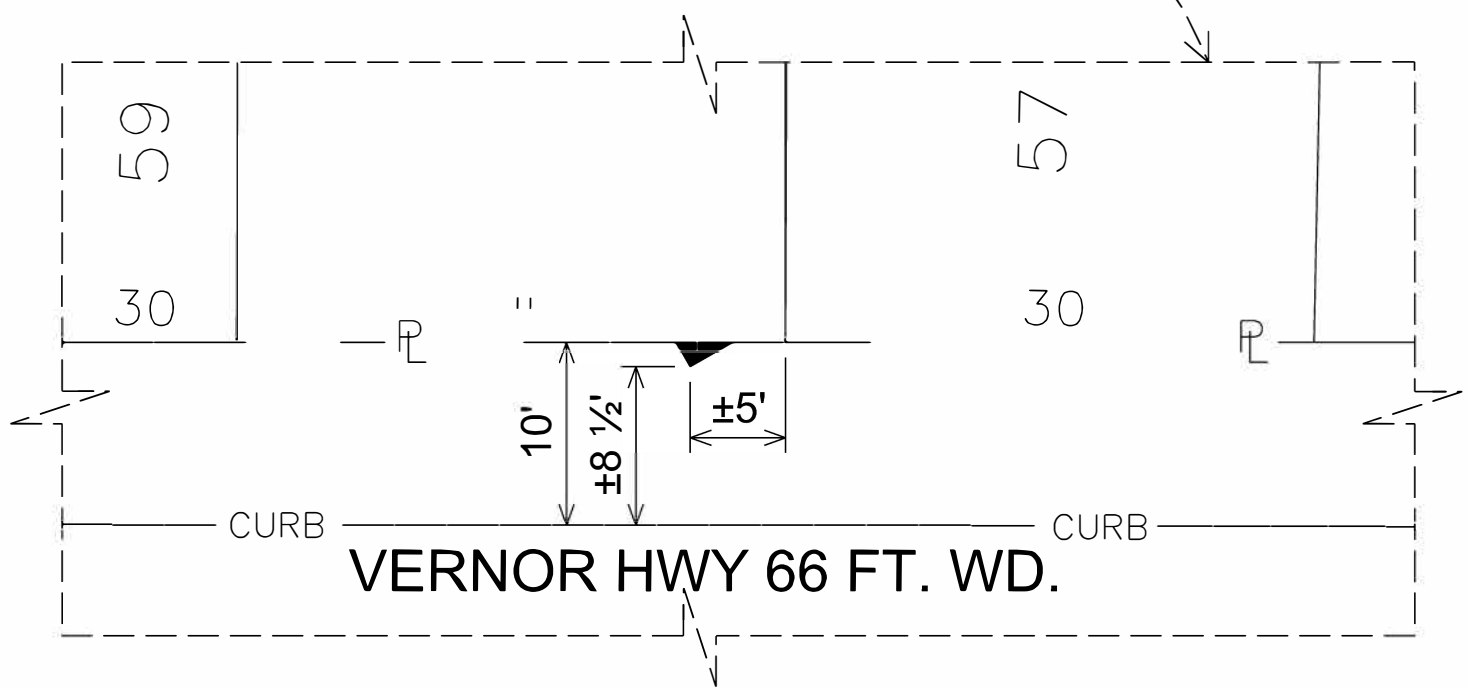




TWENTY FIFTH ST.



ALLEY 20 FT. WD.
ALLEY 20 FT. WD.
VERNOR HWY 66 FT. WD.



- REQUEST ENCROACHMENT
(For awning, beginning 102 inches above grade and extending to 152 inches above grade.)

(FOR OFFICE USE ONLY)

CARTO 19 D

B					
A					
DESCRIPTION	DRWN	CHKD	APPD	DATE	
REVISIONS					
DRAWN BY	SA	CHECKED	KSM		
DATE	03-31-21	APPROVED			

**REQUEST ENCROACHMENT
INTO VERNOR HWY
AT 3554 W, VERNOR HWY.**

CITY OF DETROIT	
CITY ENGINEERING DIVISION	
SURVEY BUREAU	
JOB NO.	01-01
DRWG. NO.	