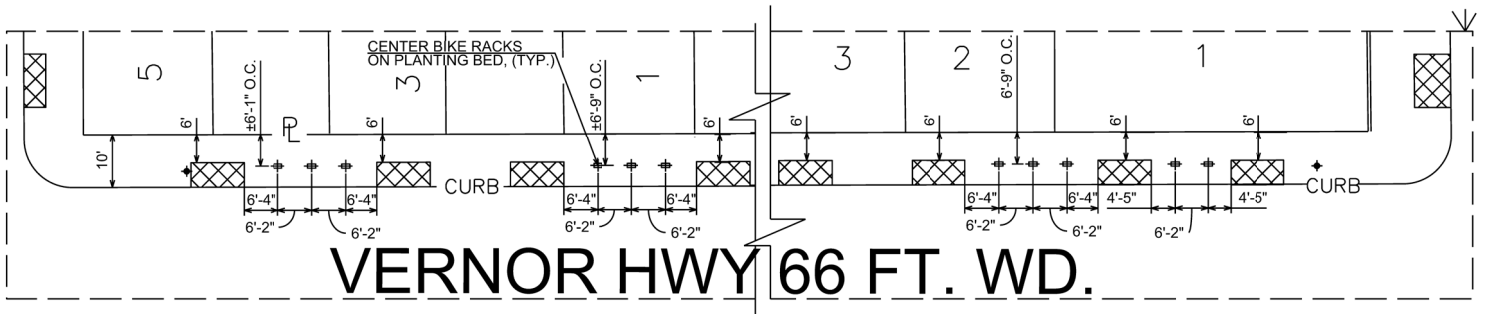
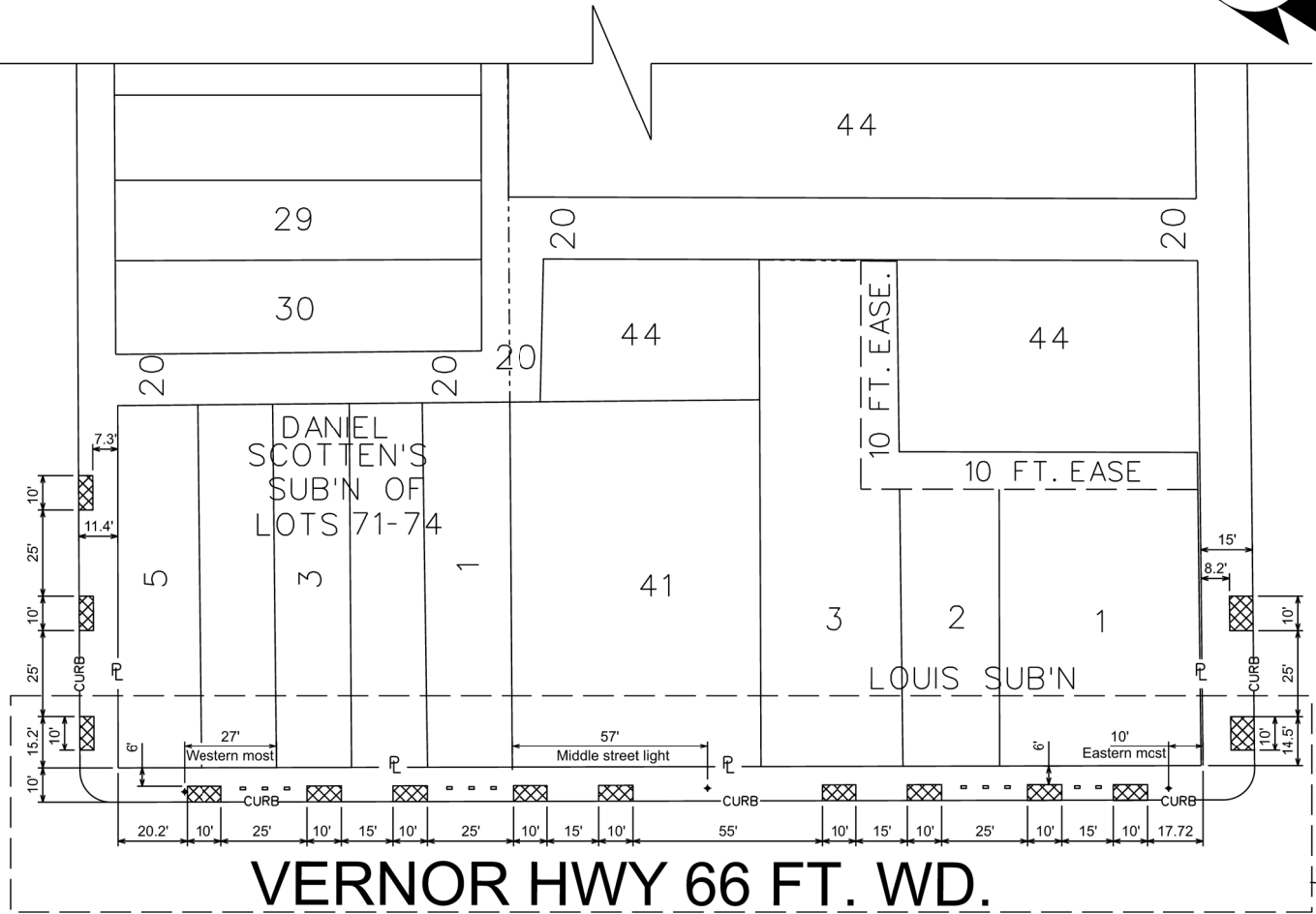




PALMS AVE. 50 FT. WD.

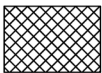
HUBBARD ST. 56 FT. WD.



**LEGEND**



- LIGHT POLE



- REQUEST ENCROACHMENT

With :

- LANDSCAPING BEDS ALONG W VERNOR, PALMS, AND HUBBARD
- BIKE RACKS ON W VERNOR.

(FOR OFFICE USE ONLY)

CARTO 19 D

B					
A					
DESCRIPTION	DRWN	CHKD	APPD	DATE	
REVISIONS					
DRAWN BY	SA	CHECKED	JD		
DATE	03-30-21	APPROVED			

**REQUEST ENCROACHMENT  
 INTO W. VERNOR HWY,  
 PALMS AVE. AND HUBBARD ST.  
 AT 4000 W Vernor**

**CITY OF DETROIT  
 CITY ENGINEERING DIVISION  
 SURVEY BUREAU**

JOB NO. 01-01

DRWG. NO.