

DEPARTMENTAL REFERENCE COMMUNICATION

Friday, April 16, 2021

To: The Department or Commission Listed Below

From: Janice M. Winfrey, Detroit City Clerk

The following petition is herewith referred to you for report and recommendation to the City Council.

In accordance with that body's directive, kindly return the same with your report in duplicate within four (4) weeks.

DPW - CITY ENGINEERING DIVISION PLANNING AND DEVELOPMENT DEPARTMENT

1416 *Department of Public Works City Engineering, request to vacate a portion of the east-west alley bounded by the John C. Lodge Service Drive, Philadelphia Avenue, 3rd Avenue, and Euclid Avenue. Also the dedication of a 20x30 turn-around access area on the east 30ft lot 38 of 857 W Philadelphia.*



CITY OF DETROIT
DEPARTMENT OF PUBLIC WORKS
CITY ENGINEERING DIVISION

COLEMAN A. YOUNG MUNICIPAL CENTER
2 WOODWARD AVE. SUITE 601
DETROIT, MICHIGAN 48226
PHONE: (313) 224-3949 TTY: 711
WWW.DETROITMI.GOV

To: Clerk's Office
From: The Department of Public Works
City Engineering Division
MapsandRecordsBureau@DetroitMI.Gov
(313) 224-3970

Petitioner:
DPW – City Engineering Division
2 Woodward A, Suite 642
Detroit, MI, 48226

On behalf of the above-mentioned petitioner the Department of Public Works: City Engineering Division is submitting a petition request for the below mentioned action. The petitioner has received a project consultation from the Department of Public Works: City Engineering Division and has been advised the following:

Type of action recommended:

Petition to vacate a portion of the east-west alley bounded by the John C. Lodge Service Drive, Philadelphia Avenue, 3rd Avenue, and Euclid Avenue. Also the dedication of a 20x30 turn-around access area on the east 30 ft. lot 38 of "Mack's Subdivision", commonly known as 857 West Philadelphia.

Reviewed by:

Jered Dean
Manager II
Department of Public Works
City Engineering Division
313-224-3985



CITY OF DETROIT
GENERAL SERVICES DEPARTMENT

115 ERSKINE
DETROIT, MICHIGAN 48201
PHONE 313 • 628-0900
FAX 313 • 628-0927

March 23, 2021

Honorable City Council;

Re: Petition to “Vacate and Convert to Utility Easement” portion of alley bounded by 3rd Avenue & John C. Lodge Service Drive. The Alley is located south of Philadelphia, and north of Euclid Avenue.

The General Services Department is requesting to expand a new park for the community in the 3rd Avenue and Philadelphia area. The proposal is to “Vacate and Convert to Utility Easement” a portion of the alley. This will allow us to combine two (2) new parks. A park north of the alley & a new park south of the alley on Euclid Avenue.

The new combined parks will provide 1.55 acres to the Community and expand opportunities for walking, open play areas & seating along expanded pathways.

We respectfully request your authorization to approve this petition with a Waiver of Reconsideration

Sincerely,

Brad Dick
Group Executive



ADELPHIA STREET



GENERAL SERVICES DEPARTMENT
 LANDSCAPE DESIGN UNIT
 10000 Beyond Hill, Upper Level
 Detroit, MI 48226
 (313) 224-1154 Phone
 (313) 224-1734 Fax

- PROJECT DEVELOPMENT SCOPE ITEMS:
1. CONCRETE WALKING PATH AND CONCRETE PAVES FOR PICNIC TABLES, FITNESS EQUIPMENT AND BIKE RACKS.
 2. HORIZONTAL PITS PER DETAIL.
 3. PICNIC TABLES AND BENCHES.
 4. BENCHES—SURFACE MOUNTED.
 5. TYPING RIBS—COORDINATE WITH GSD.
 6. BOLLARDS—PER GSD DETAIL.
 7. 3'-4" BOLLARDS AND CHAIN GATES.
 8. DECIDUOUS/EVERGREEN TREES.
 9. PLAYGROUND (4000 S.F.) QUOTEEN LOW-BID COMBILITY FUND.
 10. SITE PREPARATION, MOBILIZATION AND RESTORATION.

- SEE SPECIFIC ITEMS:
1. PICNIC SHELTER—24'X20' + PICNIC TABLES, GRS, UTILITY TABLE, COAL BIN, TYPING RIB.
 2. ALTERNATE VOLLEYBALL OPTIONS.
 3. FOUR (4) BIKING FITNESS EQUIPMENT.
 4. PARK SIGN—ENTRY.
 5. ADDITIONAL SERVICES.

PREPARED BY: LANDSCAPE DESIGN UNIT
 DATE: 3-4-2021
 DRAWN BY: OD
 CHECKED BY: TK
 SHEET TITLE: **SITE PLAN**
 PICNIC SHELTER, FITNESS EQUIPMENT & MULTI-SPORTS COURT
 SUBMITTED FOR:

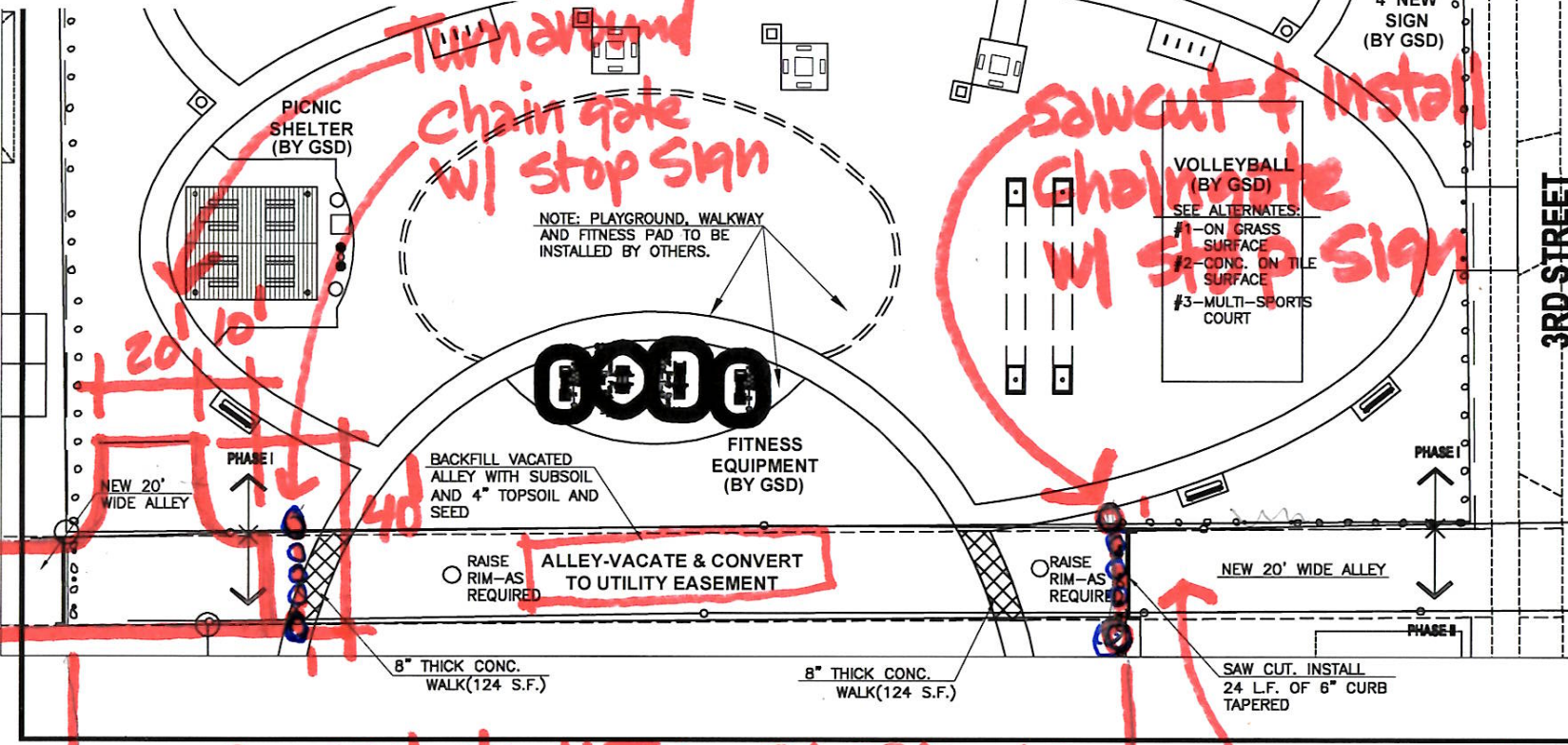
REVISIONS:
 PROJECT: **McDuffy Park (GSD)**

N ● SHEET NO. 2
 SCALE: N.T.S. PROPERTY NO. 133 CLUSTER NO. 4

Chain gate + stop sign

Turn around
 Chain gate w/ stop sign

Sawcut & install
 Chain gate w/ stop sign



Convert to UTIL. EASEMENT

Leave "As-Is"