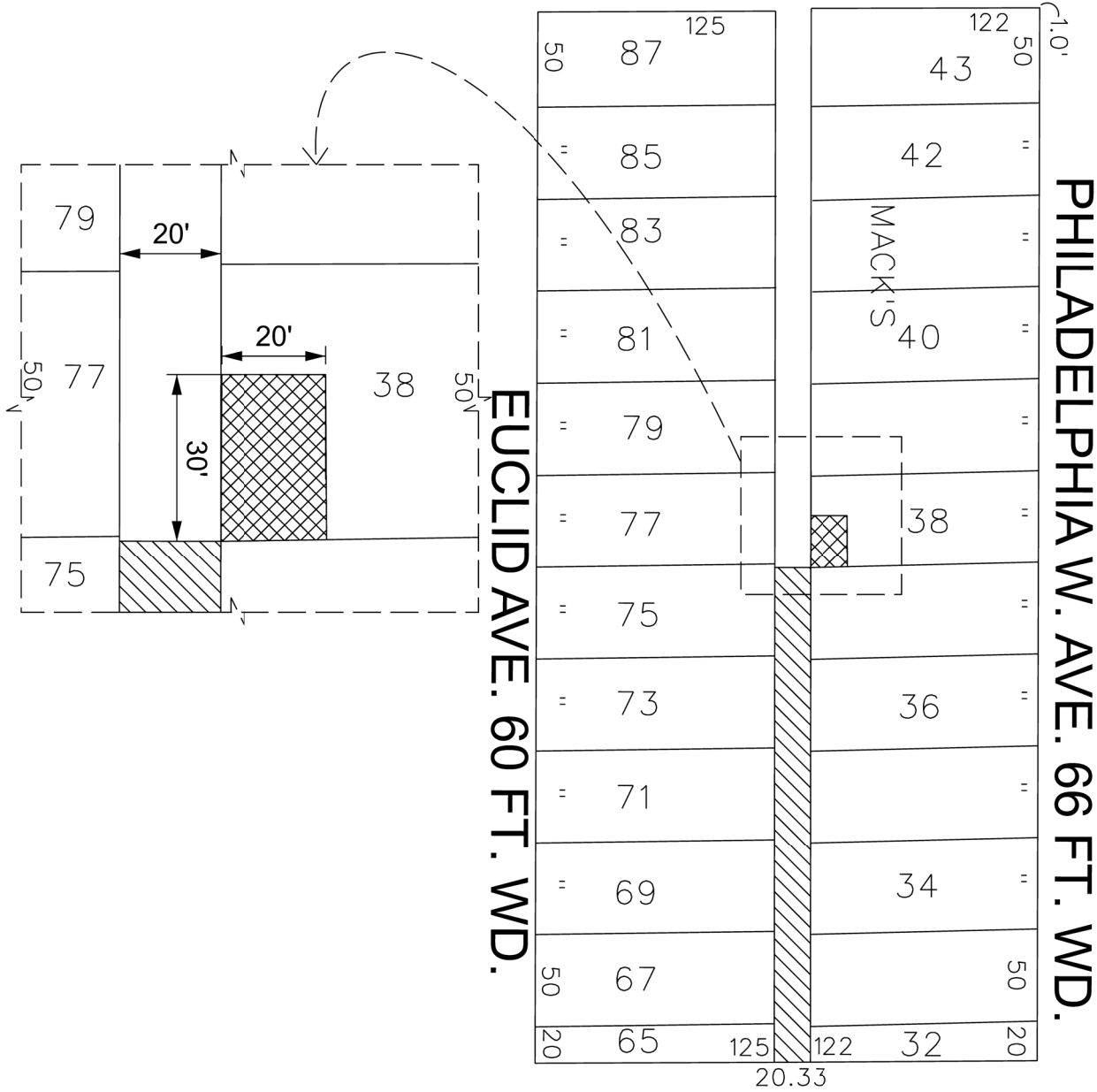




JOHN C. LODGE FWY



- CONVERSION TO EASEMENT
- REQUEST ALLEY DEDICATION

(FOR OFFICE USE ONLY)

CARTO 32 E

B					
A					
DESCRIPTION	DRWN	CHKD	APPD	DATE	
REVISIONS					
DRAWN BY	SA	CHECKED	JD		
DATE	03-18-21	APPROVED			

CONVERSION TO EASEMENT
WITH TURN AROUND DEDICATION.
PART OF THE EAST-WEST ALLEY
BETWEEN 3RD AVE. AND THE SERVICE DRIVE
SOUTH OF PHILADELPHIA.

CITY OF DETROIT CITY ENGINEERING DIVISION SURVEY BUREAU	
JOB NO.	01-01
DRWG. NO.	