

PETITION NO. 1382
 MICHAEL E. WILLIAMS
 14371 CHAPEL ST.
 DETROIT, MICHIGAN 48223
 PHONE NO. 313 694-6873

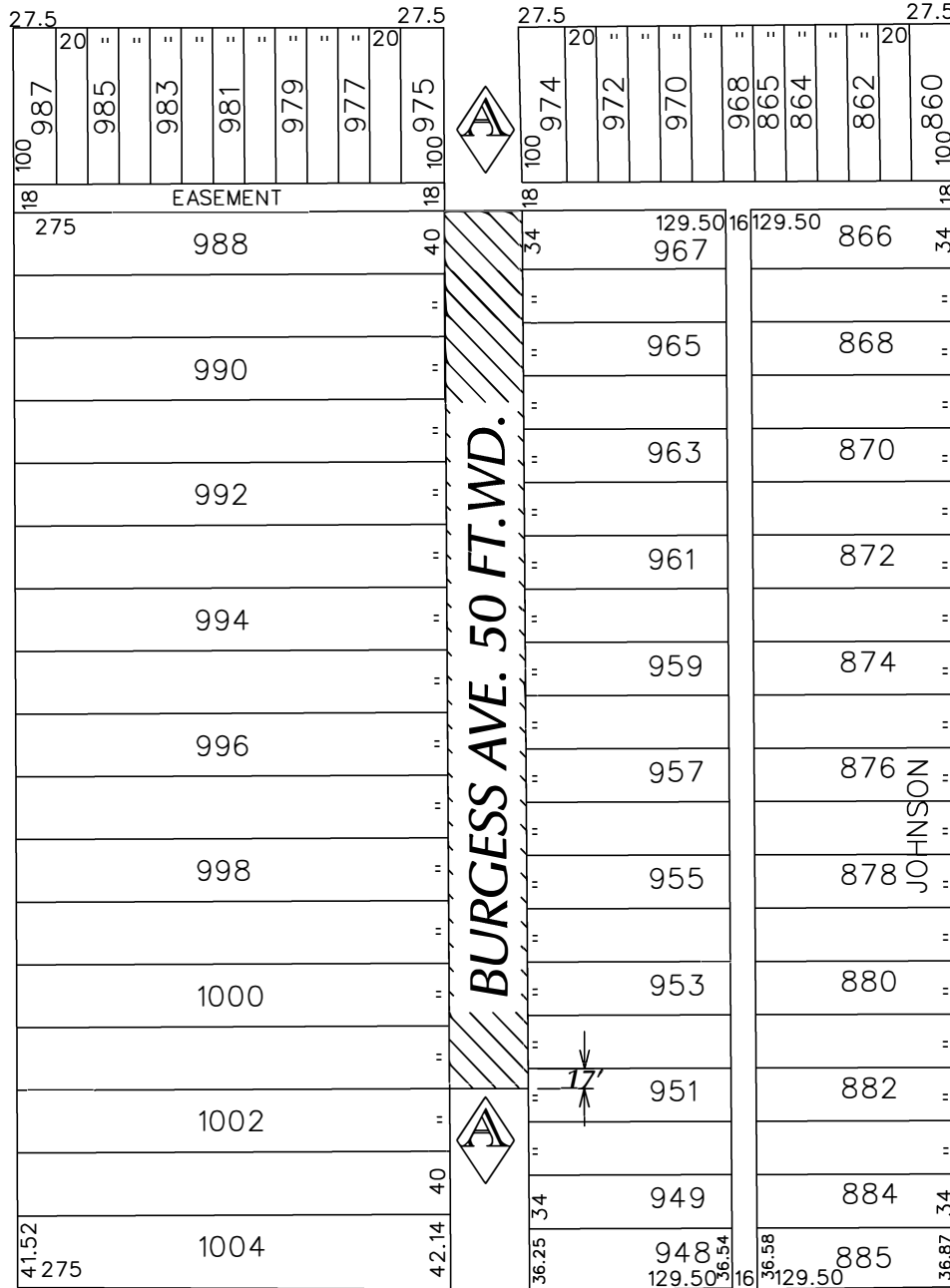


LYNDON AVE. 76 FT. WD.

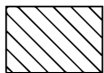
GREYDALE AVE. 50 FT. WD.

BURGESS AVE. 50 FT. WD.

CHAPEL AVE. 50 FT. WD.



ACACIA AVE. 60 FT. WD.



- TEMPORARY STREET CLOSURE

(FOR OFFICE USE ONLY)

CARTO 112 D

B					
A	MINIMIZE THE TEMP. CLOSURE AREA	SA	JD		01/02/20
REVISIONS					
DESCRIPTION	DRWN	CHKD	APPD	DATE	
DRAWN BY	SA	CHECKED	KSM		
DATE	06-18-19	APPROVED			

**REQUEST TO TEMPORARY CLOSE
 BURGESS ST. 50 FT. WD.
 IN THE BLOCK BOUND BY
 CHAPEL, ACACIA, GREYDALE
 AND LYNDON AVE.**

CITY OF DETROIT	
CITY ENGINEERING DIVISION	
SURVEY BUREAU	
JOB NO.	01-01
DRWG. NO.	X 861