



Date: 01/25/21

From The Desk Of

Deputy Chief Charles Fitzgerald
NEIGHBORHOOD POLICING BUREAU WEST

To:

Deputy Chief:
Commander: Kari Sloan
Captain: Russell Solano
Lieutenant:
Sergeant: Julie Krupinski
Police Officer: Jennifer Moreno
Other: Catrina Garcia, Shirley Walker

Subject: PETITION #1371

- See Special Instructions
- Recommendation
- Investigation & report
- Confer With Me
- Prepare Reply for Signature Of The
 - Mayor
 - Chief
 - C.O.

Date Due: 02/05/21

Special Instructions:

1. Please see attached and comply as requested

Thank You,
NPB-West

Janice M. Winfrey
City Clerk

City of Detroit
OFFICE OF THE CITY CLERK

Andre P. Gilbert II
Deputy City Clerk

DEPARTMENTAL REFERENCE COMMUNICATION

Tuesday, January 19, 2021

To: The Department or Commission Listed Below
From: Janice M. Winfrey, Detroit City Clerk

The following petition is herewith referred to you for report and recommendation to the City Council.

In accordance with that body's directive, kindly return the same with your report in duplicate within four (4) weeks.

LEGISLATIVE POLICY DIVISION PLANNING AND DEVELOPMENT DEPARTMENT
LAW DEPARTMENT FINANCE DEPT/ASSESSMENTS DIVISION

1371 *Detroit Economic Growth Corporation request to encroach into Aggregate Drive, west of Springwells Court, for the purpose of installing a tunnel below grade.*

2 Woodward Ave. Coleman A. Young Municipal Center Rm. 200, Detroit, MI 48226

(313) 224 - 3260 | Fax: (313) 224 - 1466

TO: City Engineering Division, DPW
2 Woodward Ave., Suite 642
Detroit, Michigan 48226-3462
Survey Bureau: 313-224-3970

Petition: x1371

The proposed change in property (referred to on the other side of this sheet) would affect our services as follows:

- Not Involved
- Involved; but no objections to the property change.
- Involved; objection to the property change.
- Involved; the nature of our services and the estimated costs of removing and/or rerouting such services are:

Objections, Please leave a brief explanation for any objection or the nature of an estimated cost:

Detroit Police
(Utility or City Department)

By Garrett Taylor

Title Neighborhood Police Officer

Date 2/1/21

(313) 590-9033
Area code - Telephone number

2/20/2018 wlv

APPROVED
FEB 02 2021
Kausman
COMMANDER
FOURTH PRECINCT

APPROVED
FEB 02 2021
Alvord
FOURTH PRECINCT

09/23/2019

City of Detroit
City Engineering Division, Department of Public Works
Maps and Records Bureau

NOTICE OF PROPOSED CHANGE IN PROPERTY

Date: _____

Petition: x1371 _____

- | | |
|---|--|
| <input type="checkbox"/> AT&T Telecommunication | <input type="checkbox"/> Berm Use |
| <input type="checkbox"/> Comcast Television (CATV) | <input type="checkbox"/> Conversion to Easement |
| <input type="checkbox"/> Detroit Edison (DTE) | <input type="checkbox"/> Dedication |
| <input type="checkbox"/> Fire Department | <input checked="" type="checkbox"/> Encroachment |
| <input type="checkbox"/> Great Lakes Water Authority | <input type="checkbox"/> Outright Vacation |
| <input type="checkbox"/> Land Bank Authority | <input type="checkbox"/> Temporary Closing |
| <input type="checkbox"/> Michcon (DTE) | |
| <input type="checkbox"/> Planning & Development Department | |
| <input type="checkbox"/> Public Lighting Authority | |
| <input type="checkbox"/> Public Lighting Department | |
| <input type="checkbox"/> Police Department | |
| <input type="checkbox"/> Solid Waste Division, DPW | |
| <input type="checkbox"/> Street Design Bureau, DPW | |
| <input type="checkbox"/> Street Maintenance Division, DPW | |
| <input type="checkbox"/> Traffic Engineering Division, DPW | |
| <input type="checkbox"/> Water and Sewerage Department | |
| <input type="checkbox"/> Detroit Thermal | |
| <input type="checkbox"/> International Transmission Company (ITC) | |

A petition drawing is attached. Property shown on the attached print is proposed to be changed as indicated. Kindly report (using the back of this sheet) the nature of your services, if any affected by the proposed change and the estimated costs of removing and rerouting such services (if necessary). If a response is not received after a second notice of proposed change has been issued DPW will make the determination to move forward with the petition.

Please return one copy to City Engineering Division, DPW within two weeks of the submittal date. Retain one copy and print for you file.

Ron Brundidge, Director, Department of Public Works

By: Richard Doherty, CED DPW
City Engineer



ASTORIAN DESIGN AND CONSULTING ENGINEERS ARCHITECTS
 200 W. 10TH STREET, SUITE 200
 ASTORIA, OREGON 97103
 PHONE: 503.325.1111
 FAX: 503.325.1112
 WWW.ASTORIANDESIGN.COM

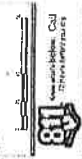
DESIGN HISTORY
 THIS PROJECT WAS DESIGNED BY ASTORIAN DESIGN AND CONSULTING ENGINEERS ARCHITECTS FOR THE WDBA APWD. THE PROJECT WAS DESIGNED BY ASTORIAN DESIGN AND CONSULTING ENGINEERS ARCHITECTS FOR THE WDBA APWD. THE PROJECT WAS DESIGNED BY ASTORIAN DESIGN AND CONSULTING ENGINEERS ARCHITECTS FOR THE WDBA APWD.

SPRINGWELLS COURT DETOUR

ALIGNMENT PLAN

PLAN ECH 110000000 000 00 00

1598-0001



STATE OF MICHIGAN
 PROFESSIONAL ENGINEER
 MICHAEL GREGORY
 LICENSE NO. 94076
 EXPIRES 12/31/2011

DESIGN PACKAGE
 4
 25 PR-2

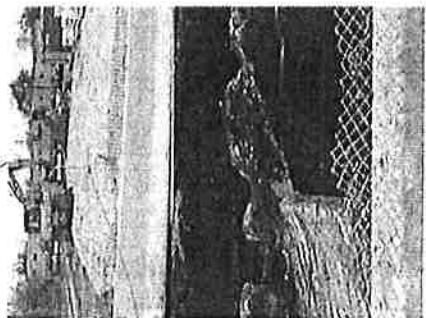
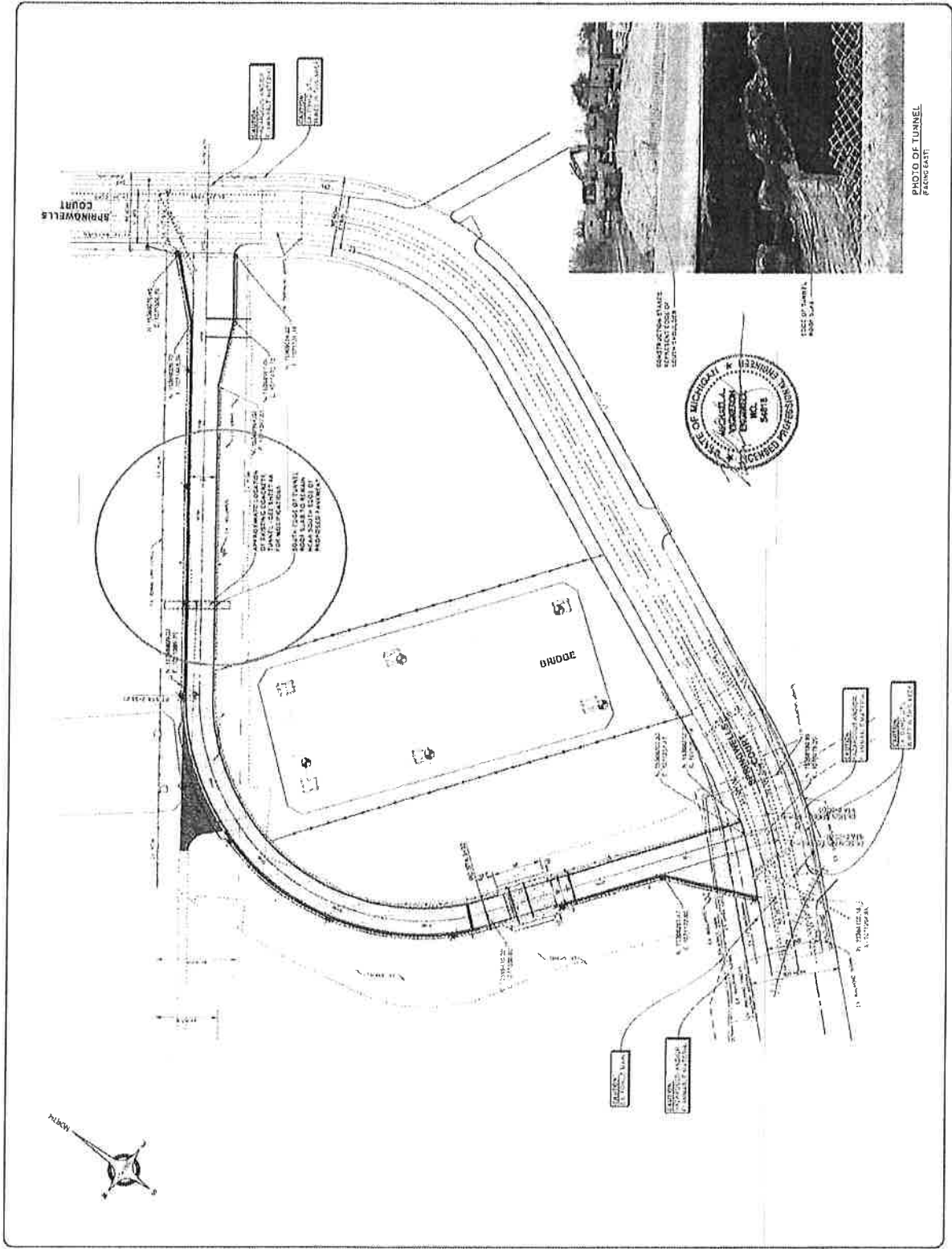
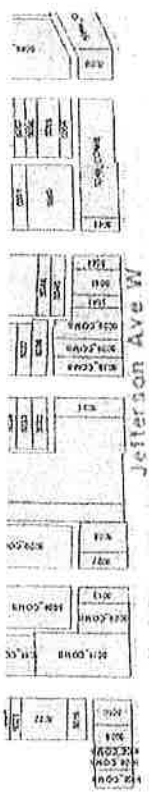


PHOTO OF TUNNEL FROM EAST



Edison Rd

Public
Utilities
District

Parcel 5005 (City Parcel Number is 18000043) currently owned by MDOT is to be handed over to BNA in Mid-Dec for GHIB construction activities.

approximate location of discovered Tunnel

Gravel Road is currently owned by the City, and ROW permit had been applied for in order to pave for detour use.

Parcel 5004 is currently approved for BNA use for GHIB construction.

Zug Island Rd

Erie St

Jefferson Ave W

Jewells Ct

Springwells

Westend St S

Barnes St

Sheet

WDBA APWD



ANDERSON ECKSTEIN AND
RUSSELL INC.
224 HENRIE BLVD
ANN ARBOR MI 48106
313.963.1100
www.aer.com

INTERNATIONAL BRIDGE
CONSTRUCTION
10000 WOODLAND AVENUE
ANN ARBOR MI 48106
734.769.1100
www.internationalbridge.com

SPRINGWELLS COURT
DETOUR

EXISTING TUNNEL
MODIFICATIONS
UNDER PROPOSED
ROAD

PLAN

SECTION

ROAD PROFILE

SCALE 1/4" = 1'-0"

SCALE 1/4" = 1'-0"

SCALE 1/4" = 1'-0"

SCALE 1/4" = 1'-0"

SCALE 1/4" = 1'-0"

SCALE 1/4" = 1'-0"

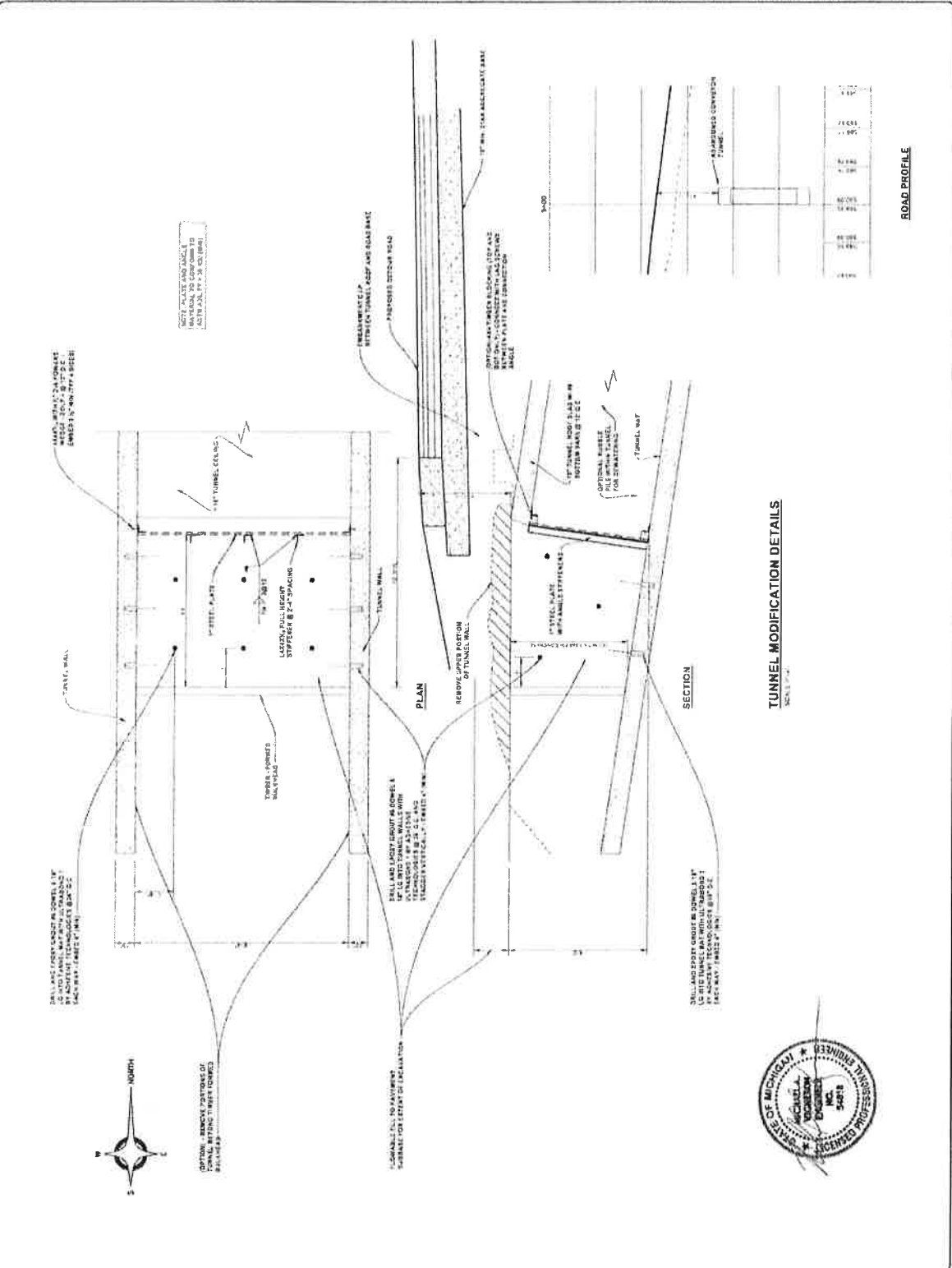
SCALE 1/4" = 1'-0"

SCALE 1/4" = 1'-0"

SCALE 1/4" = 1'-0"

SCALE 1/4" = 1'-0"

SCALE 1/4" = 1'-0"



ALL WALLS SHALL BE CONCRETE
WITH 4" MIN. THICKNESS
EMBEDDED IN 12" MIN. DEPTH

STEEL PLATE AND ANGLE
SHALL BE WELDED TO
CONCRETE

12" MIN. THICKNESS
CONCRETE

12" MIN. THICKNESS
CONCRETE

12" MIN. THICKNESS
CONCRETE

12" MIN. THICKNESS
CONCRETE

12" MIN. THICKNESS
CONCRETE

12" MIN. THICKNESS
CONCRETE

12" MIN. THICKNESS
CONCRETE

12" MIN. THICKNESS
CONCRETE

12" MIN. THICKNESS
CONCRETE

12" MIN. THICKNESS
CONCRETE

12" MIN. THICKNESS
CONCRETE

12" MIN. THICKNESS
CONCRETE

12" MIN. THICKNESS
CONCRETE

12" MIN. THICKNESS
CONCRETE

12" MIN. THICKNESS
CONCRETE

12" MIN. THICKNESS
CONCRETE

12" MIN. THICKNESS
CONCRETE

12" MIN. THICKNESS
CONCRETE

12" MIN. THICKNESS
CONCRETE

12" MIN. THICKNESS
CONCRETE

12" MIN. THICKNESS
CONCRETE

12" MIN. THICKNESS
CONCRETE

12" MIN. THICKNESS
CONCRETE

12" MIN. THICKNESS
CONCRETE

12" MIN. THICKNESS
CONCRETE

12" MIN. THICKNESS
CONCRETE

12" MIN. THICKNESS
CONCRETE

12" MIN. THICKNESS
CONCRETE

12" MIN. THICKNESS
CONCRETE

12" MIN. THICKNESS
CONCRETE

12" MIN. THICKNESS
CONCRETE

12" MIN. THICKNESS
CONCRETE

12" MIN. THICKNESS
CONCRETE

12" MIN. THICKNESS
CONCRETE

12" MIN. THICKNESS
CONCRETE

12" MIN. THICKNESS
CONCRETE

12" MIN. THICKNESS
CONCRETE

12" MIN. THICKNESS
CONCRETE

12" MIN. THICKNESS
CONCRETE

12" MIN. THICKNESS
CONCRETE

12" MIN. THICKNESS
CONCRETE

12" MIN. THICKNESS
CONCRETE

12" MIN. THICKNESS
CONCRETE

12" MIN. THICKNESS
CONCRETE

12" MIN. THICKNESS
CONCRETE

12" MIN. THICKNESS
CONCRETE

12" MIN. THICKNESS
CONCRETE

12" MIN. THICKNESS
CONCRETE

12" MIN. THICKNESS
CONCRETE

12" MIN. THICKNESS
CONCRETE

12" MIN. THICKNESS
CONCRETE

12" MIN. THICKNESS
CONCRETE

12" MIN. THICKNESS
CONCRETE

12" MIN. THICKNESS
CONCRETE

12" MIN. THICKNESS
CONCRETE

12" MIN. THICKNESS
CONCRETE

12" MIN. THICKNESS
CONCRETE

12" MIN. THICKNESS
CONCRETE

12" MIN. THICKNESS
CONCRETE

12" MIN. THICKNESS
CONCRETE

12" MIN. THICKNESS
CONCRETE

12" MIN. THICKNESS
CONCRETE



1094-0001

DESIGN
PACKAGE
4A
45 PH2

DATE: 10/15/2014



CITY OF DETROIT
DEPARTMENT OF PUBLIC WORKS
CITY ENGINEERING DIVISION

COLEMAN A. YOUNG MUNICIPAL CENTER
2 WOODWARD AVE. SUITE 601
DETROIT, MICHIGAN 48226
PHONE: (313) 224-3949 TTY: 711
WWW.DETROITMI.GOV

To: Clerk's Office
From: The Department of Public Works
City Engineering Division
MapsandRecordsBureau@DetroitMI.Gov
(313) 224-3970

Petitioner:
Detroit Economic Growth Corporation
500 Griswold Street, Suite 2200
Detroit, MI, 48226
313-963-2940

On behalf of the above mentioned petitioner the Department of Public Works: City Engineering Division is submitting a petition request for the below mentioned action. The petitioner has received a project consultation from the Department of Public Works: City Engineering Division and has been advised the following:

Type of action recommended:

Petition for encroachment into Aggregate Drive, west of Springwells Court, for the purpose of installing a tunnel below grade.

Reviewed by:

Jered Dean
Manager II

Maps and Records Bureau
MapsandRecordBureau@Detroitmi.gov
313-224-3970