

- ENCROACHMENT

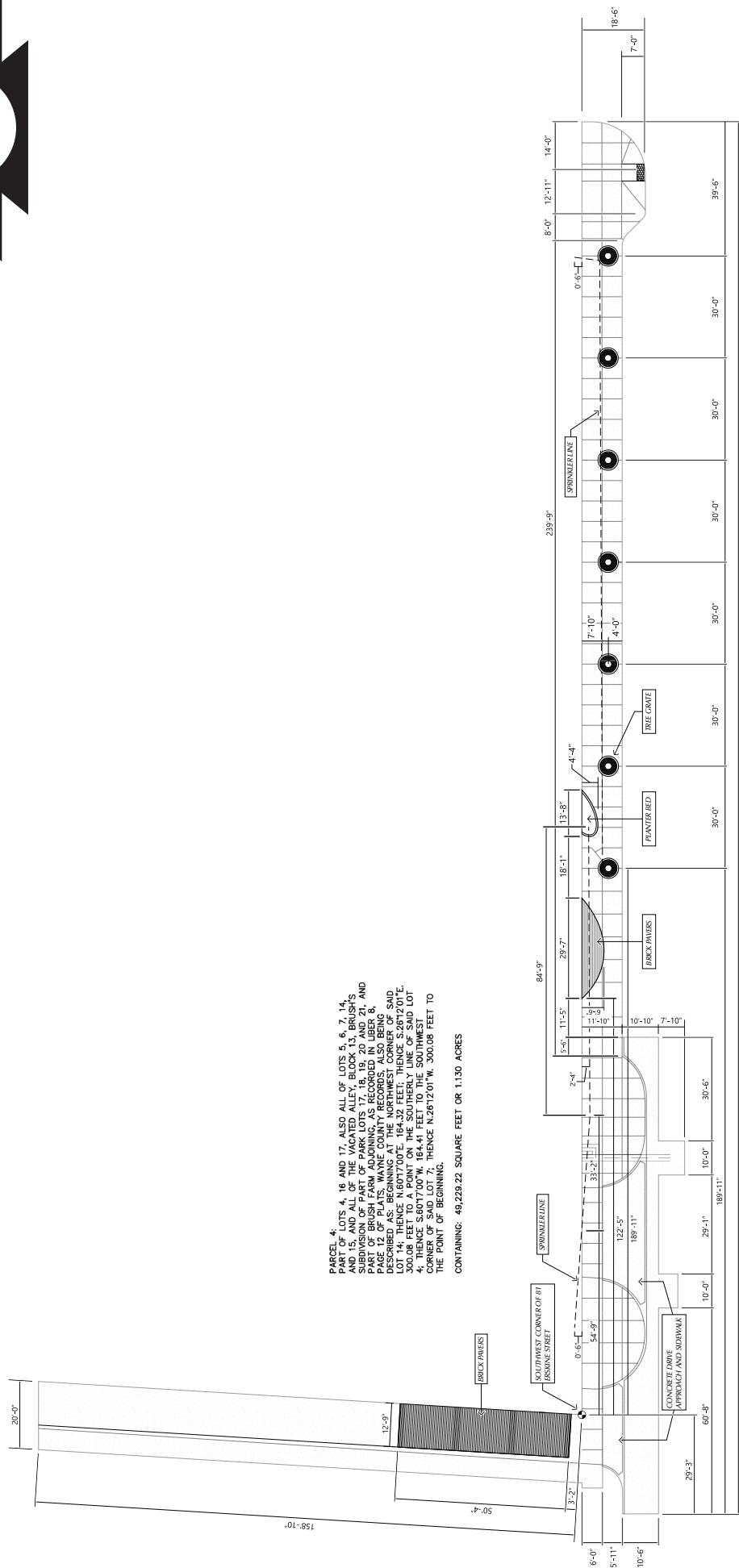
(FOR OFFICE USE ONLY)

CARTO 29 A

B					
A					
DESCRIPTION	DRWN	CHKD	APPD	DATE	
REVISIONS					
DRAWN BY	KJ		CHECKED		
DATE	12-08-20		APPROVED BY	JD	

MULTIPLE ENCROACHMENTS IN THE PUBLIC ALLEY AND R.O.W., IN THE BLOCK BOUND BY JOHN R ST, ERSKINE ST, WOODWARD AVE, AND THE EASEMENT FORMERLY KNOWN AS ELIOT ST.

CITY OF DETROIT	
CITY ENGINEERING DIVISION	
SURVEY BUREAU	
JOB NO.	01-01
DRWG. NO.	X



PARCEL 4, PART OF LOTS 4, 16 AND 17, ALSO ALL OF LOTS 5, 6, 7, 14, AND 15, AND ALL OF THE VACATED ALLEY, BLOCK 13, BRUSH'S SUBDIVISION OF PART OF PARK LOTS 5, 18, 19, 20 AND 21, AND ALSO PART OF LOTS 13, 14, 15, 16, 17, 18, 19, 20 AND 21, DESCRIBED AS: BEGINNING AT THE NORTHWEST CORNER OF SAID LOT 4; THENCE N61°17'00"W, 164.41 FEET TO THE SW CORNER OF SAID LOT 7; THENCE S60°17'00"W, 164.41 FEET TO THE SOUTHWEST CORNER OF SAID LOT 7; THENCE N26°12'01"W, 300.08 FEET TO THE POINT OF BEGINNING.

CONTAINING: 49,229.22 SQUARE FEET OR 1.130 ACRES

409'-5"

(FOR OFFICE USE ONLY)

CARTO 29 A

CITY OF DETROIT	
CITY ENGINEERING DIVISION	
SURVEY BUREAU	
JOB NO.	01-01
DRWG. NO.	X

MULTIPLE ENCROACHMENTS IN THE PUBLIC ALLEY AND R.O.W., IN THE BLOCK BOUND BY JOHN R ST, ERSKINE ST, WOODWARD AVE, AND THE EASEMENT FORMERLY KNOWN AS ELIOT ST.

DESCRIPTION	DRWN	CHKD	APPD	DATE
REVISIONS				
CHECKED				
DRAWN BY	KJ			
DATE	12-08-20			
APPROVED BY	JD			