

City of Detroit

Janice M. Winfrey
City Clerk

OFFICE OF THE CITY CLERK

Andre P. Gilbert II
Deputy City Clerk

DEPARTMENTAL REFERENCE COMMUNICATION

Friday, November 13, 2020

To: The Department or Commission Listed Below

From: Janice M. Winfrey, Detroit City Clerk

The following petition is herewith referred to you for report and recommendation to the City Council.

In accordance with that body's directive, kindly return the same with your report in duplicate within four (4) weeks.

PLANNING AND DEVELOPMENT DEPARTMENT DPW - CITY ENGINEERING DIVISION

1359 *Hamilton Corridor LLC, request to vacate to various segments of right of way bounded by the John C. Lodge Service Dr, Thomson Ave and Labelle Ave.*



CITY OF DETROIT
DEPARTMENT OF PUBLIC WORKS
CITY ENGINEERING DIVISION

1359

COLEMAN A. YOUNG MUNICIPAL CENTER
2 WOODWARD AVE. SUITE 601
DETROIT, MICHIGAN 48226
PHONE: (313) 224-3949 TTY: 711
WWW.DETROITMI.GOV

To: Clerk's Office
From: The Department of Public Works
City Engineering Division
MapsandRecordsBureau@DetroitMI.Gov
(313) 224-3970

Petitioner:
Hamilton Corridor, LLC
28400 Northwestern Highway
Southfield, MI 48034

On behalf of the above mentioned petitioner the Department of Public Works: City Engineering Division is submitting a petition request for the below mentioned action. The petitioner has received a project consultation from the Department of Public Works: City Engineering Division and has been advised the following:

Type of action recommended:

Petition for vacation to various segments of right of way bounded by the John C. Lodge Service Drive, Thomson Avenue, and Labelle Avenue.

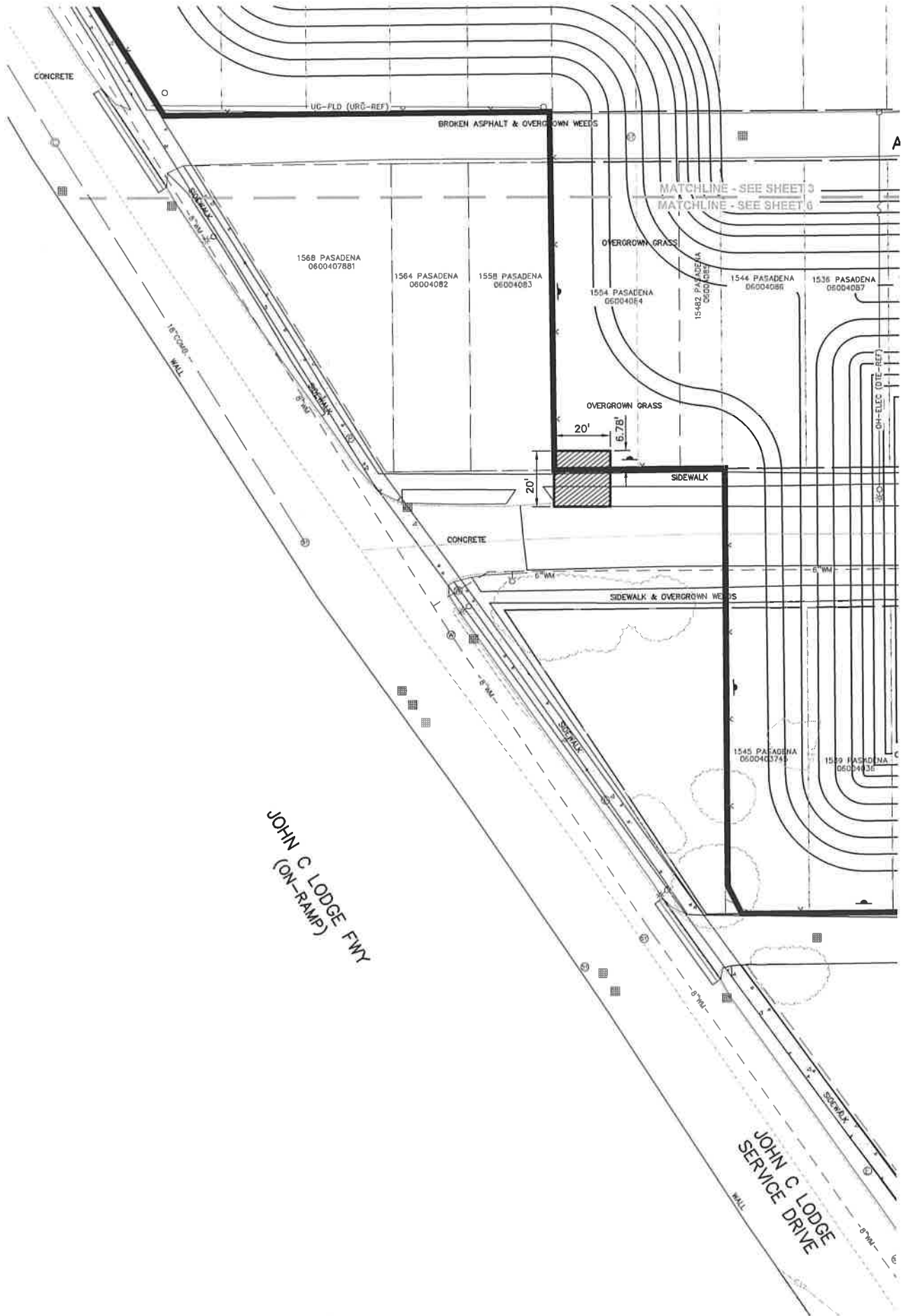
Based on the scope of the project the following requirements have been outlined:

- No further requirements noted.

Sincerely,

Jered Dean

Jered Dean
Manager II
Maps and Records Bureau



JOHN C LODGE FWY
(ON-RAMP)

JOHN C LODGE
SERVICE DRIVE

CONCRETE

1568 PASADENA
0600407881

1564 PASADENA
06004082

1558 PASADENA
06004083

1554 PASADENA
06004084

15482 PASADENA
06004085

1544 PASADENA
06004086

1536 PASADENA
06004087

1545 PASADENA
06004074

1539 PASADENA
06004088

UG-FLD (URC-REF)

BROKEN ASPHALT & OVERGROWN WEEDS

MATCHLINE - SEE SHEET 3

MATCHLINE - SEE SHEET 6

OVERGROWN GRASS

OVERGROWN GRASS

20'

6.75'

SIDEWALK

CONCRETE

SIDEWALK & OVERGROWN WEEDS

ON-ELEC (UTL-REF)

A

C

2020-11-13

1359

1359 *Petition of Hamilton Corridor LLC,
request to vacate to various segments
of right of way bounded by the John C.
Lodge Service Dr, Thomson Ave and
Labelle Ave.*

REFERRED TO THE FOLLOWING DEPARTMENT(S)

PLANNING AND DEVELOPMENT DEPARTMENT DPW -
CITY ENGINEERING DIVISION