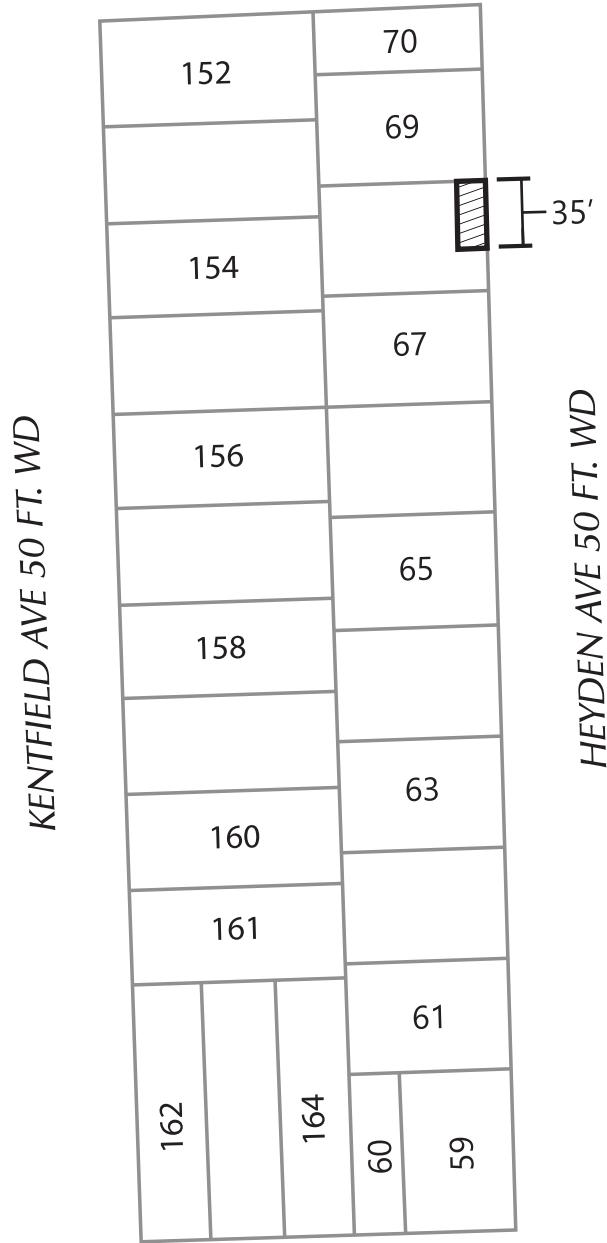


PETITION NO. 1358  
C/O LOLA CHARLES



SANTA MARIA AVE 50 FT. WD



MCNICHOLS RD 120 FT. WD



- ENCROACHMENT

(FOR OFFICE USE ONLY)

CARTO 114 E

<b>B</b>					
<b>A</b>					
DESCRIPTION	DRWN	CHKD	APPD	DATE	
REVISIONS					
DRAWN BY	KJ		CHECKED		
DATE	10-05-20		APPROVED BY	JD	

*BERM ENCROACHMENT IN THE  
BLOCK BOUND BY SANTA MARIA  
AVE., HEYDEN AVE., MCNICHOLS  
RD., AND KENTFIELD AVE.*

**CITY OF DETROIT**  
CITY ENGINEERING DIVISION  
SURVEY BUREAU

JOB NO. 01-01

DRWG. NO. X