

City of Detroit
City Engineering Division, Department of Public Works
Maps and Records Bureau

NOTICE OF PROPOSED CHANGE IN PROPERTY

Date: _____

Petition: x1355

- | | |
|--|--|
| <input type="checkbox"/> AT&T Telecommunication | <input type="checkbox"/> Berm Use |
| <input type="checkbox"/> Comcast Television (CATV) | <input type="checkbox"/> Conversion to Easement |
| <input type="checkbox"/> Detroit Edison (DTE) | <input type="checkbox"/> Dedication |
| <input type="checkbox"/> Fire Department | <input checked="" type="checkbox"/> Encroachment |
| <input type="checkbox"/> Great Lakes Water Authority | <input type="checkbox"/> Outright Vacation |
| <input type="checkbox"/> Land Bank Authority | <input type="checkbox"/> Temporary Closing |
| <input type="checkbox"/> Michcon (DTE) | |
| <input type="checkbox"/> Planning & Development Department | |
| <input type="checkbox"/> Public Lighting Authority | |
| <input type="checkbox"/> Public Lighting Department | |
| <input type="checkbox"/> Police Department | |
| <input type="checkbox"/> Solid Waste Division, DPW | |
| <input type="checkbox"/> Street Design Bureau, DPW | |
| <input checked="" type="checkbox"/> Street Maintenance Division, DPW | |
| <input type="checkbox"/> Traffic Engineering Division, DPW | |
| <input type="checkbox"/> Water and Sewerage Department | |
| <input type="checkbox"/> Detroit Thermal | |
| <input type="checkbox"/> International Transmission Company (ITC) | |

A petition drawing is attached. Property shown on the attached print is proposed to be changed as indicated. Kindly report (using the back of this sheet) the nature of your services, if any affected by the proposed change and the estimated costs of removing and rerouting such services (if necessary). If a response is not received after a second notice of proposed change has been issued DPW will make the determination to move forward with the petition.

Please return one copy to City Engineering Division, DPW within two weeks of the submittal date. Retain one copy and print for you file.

Ron Brundidge, Director, Department of Public Works

By: Richard Doherty, CED DPW
City Engineer

**TO: City Engineering Division, DPW
2 Woodward Ave., Suite 642
Detroit, Michigan 48226-3462
Survey Bureau: 313-224-3970**

Petition: x1355

The proposed change in property (referred to on the other side of this sheet) would affect our services as follows:

- Not Involved
- Involved; but no objections to the property change.
- Involved; objection to the property change.
- Involved; the nature of our services and the estimated costs of removing and/or rerouting such services are:

Objections, Please leave a brief explanation for any objection or the nature of an estimated cost:

DPW/SMD

(Utility or City Department)

McLester R Walker

By

Supervisor

Title

Nov 18, 2020

Date

313.224.2018

Area code – Telephone number

Janice M. Winfrey
City Clerk

City of Detroit
OFFICE OF THE CITY CLERK

Andre P. Gilbert II
Deputy City Clerk

DEPARTMENTAL REFERENCE COMMUNICATION

Friday, November 13, 2020

To: The Department or Commission Listed Below

From: Janice M. Winfrey, Detroit City Clerk

The following petition is herewith referred to you for report and recommendation to the City Council.

In accordance with that body's directive, kindly return the same with your report in duplicate within four (4) weeks.

PLANNING AND DEVELOPMENT DEPARTMENT DPW - CITY ENGINEERING DIVISION

1355 *David Dora, request to encroach into E. Jefferson Ave. for the replacement of landscaping beds in the sidewalk area on the north side of E. Jefferson*

2020-11-13

1355

1355 *Petition of David Dora, request to encroach into E. Jefferson Ave. for the replacement of landscaping beds in the sidewalk area on the north side of E. Jefferson*

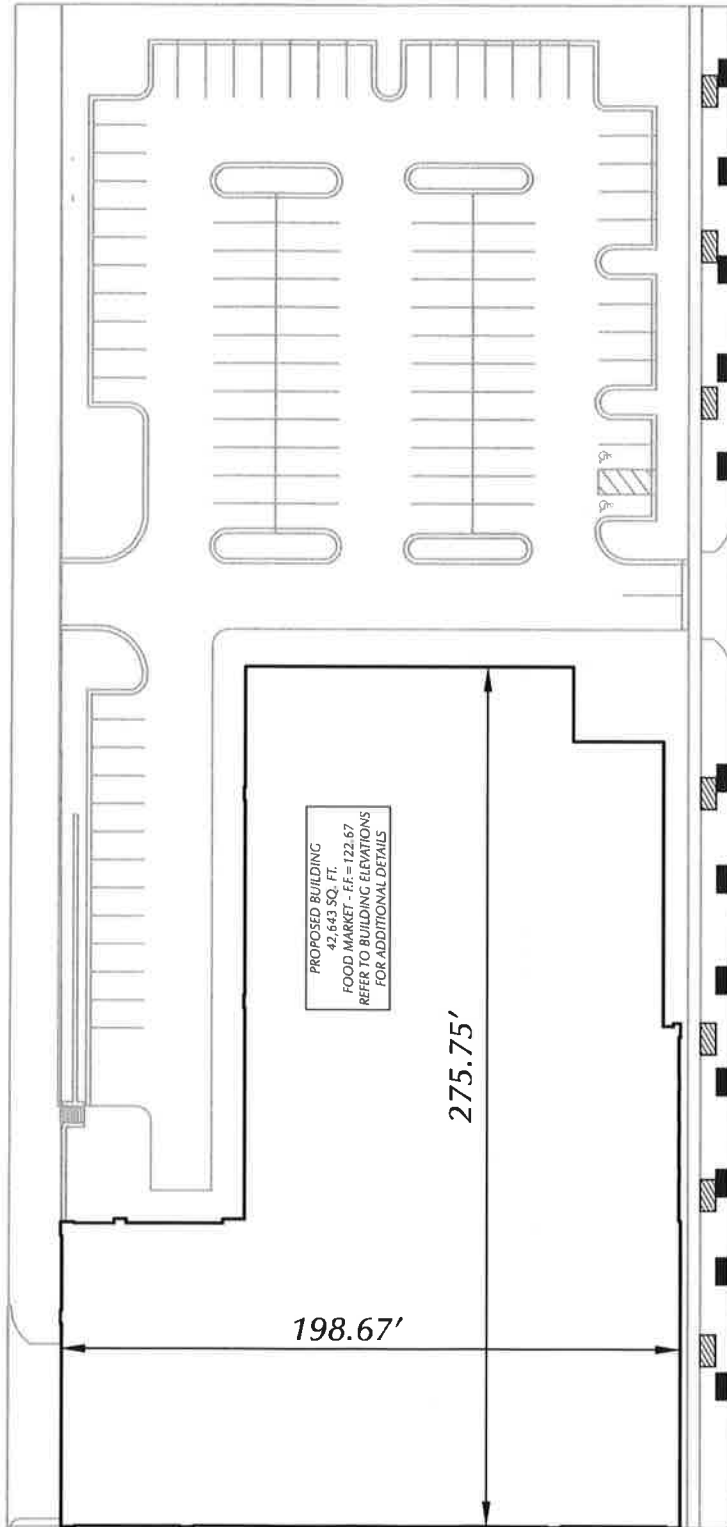
REFERRED TO THE FOLLOWING DEPARTMENT(S)

PLANNING AND DEVELOPMENT DEPARTMENT DPW -
CITY ENGINEERING DIVISION



S30°09'21"E 201.25'

LARNED ST 120 FT. WD



JEFFERSON AVE 120 FT. WD

— REMOVAL OF (7) PLANTER BEDS

— INSTALLATION OF (12) 6 INCH-HIGH PLANTER BEDS



N30°09'20"W 201.44'

(FOR OFFICE USE ONLY)

CARTO 38 D

B					
	A				
DESCRIPTION		DRWN	CHKD	APPD	DATE
REVISIONS					
DRAWN BY		CHECKED			
DATE		APPROVED BY			
11-02-20		JD			

*ENCROACHMENT IN THE BLOCK
BOUND BY JEFFERSON AVE, RIVARD ST,
LARNED ST, AND PUBLIC EASEMENT
KNOWN FORMELY AS RIOPELLE AVE.*

CITY OF DETROIT
CITY ENGINEERING DIVISION
SURVEY BUREAU

JOB NO. 01-02

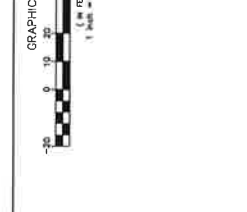
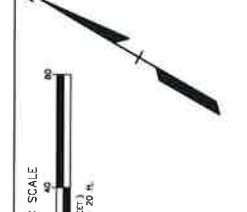
DRWG. NO. X

REVISIONS

NO.	DATE	DESCRIPTION
1		
2		
3		
4		
5		
6		
7		
8		
9		
10		
11		
12		
13		
14		
15		
16		
17		
18		
19		
20		
21		
22		
23		
24		
25		
26		
27		
28		
29		
30		
31		
32		
33		
34		
35		
36		
37		
38		
39		
40		
41		
42		
43		
44		
45		
46		
47		
48		
49		
50		

LEGEND

(Symbol)	NO. 1 CONC. DRIVE
(Symbol)	NO. 2 CONC. DRIVE
(Symbol)	NO. 3 CONC. DRIVE
(Symbol)	NO. 4 CONC. DRIVE
(Symbol)	NO. 5 CONC. DRIVE
(Symbol)	NO. 6 CONC. DRIVE
(Symbol)	NO. 7 CONC. DRIVE
(Symbol)	NO. 8 CONC. DRIVE
(Symbol)	NO. 9 CONC. DRIVE
(Symbol)	NO. 10 CONC. DRIVE
(Symbol)	NO. 11 CONC. DRIVE
(Symbol)	NO. 12 CONC. DRIVE
(Symbol)	NO. 13 CONC. DRIVE
(Symbol)	NO. 14 CONC. DRIVE
(Symbol)	NO. 15 CONC. DRIVE
(Symbol)	NO. 16 CONC. DRIVE
(Symbol)	NO. 17 CONC. DRIVE
(Symbol)	NO. 18 CONC. DRIVE
(Symbol)	NO. 19 CONC. DRIVE
(Symbol)	NO. 20 CONC. DRIVE
(Symbol)	NO. 21 CONC. DRIVE
(Symbol)	NO. 22 CONC. DRIVE
(Symbol)	NO. 23 CONC. DRIVE
(Symbol)	NO. 24 CONC. DRIVE
(Symbol)	NO. 25 CONC. DRIVE
(Symbol)	NO. 26 CONC. DRIVE
(Symbol)	NO. 27 CONC. DRIVE
(Symbol)	NO. 28 CONC. DRIVE
(Symbol)	NO. 29 CONC. DRIVE
(Symbol)	NO. 30 CONC. DRIVE
(Symbol)	NO. 31 CONC. DRIVE
(Symbol)	NO. 32 CONC. DRIVE
(Symbol)	NO. 33 CONC. DRIVE
(Symbol)	NO. 34 CONC. DRIVE
(Symbol)	NO. 35 CONC. DRIVE
(Symbol)	NO. 36 CONC. DRIVE
(Symbol)	NO. 37 CONC. DRIVE
(Symbol)	NO. 38 CONC. DRIVE
(Symbol)	NO. 39 CONC. DRIVE
(Symbol)	NO. 40 CONC. DRIVE
(Symbol)	NO. 41 CONC. DRIVE
(Symbol)	NO. 42 CONC. DRIVE
(Symbol)	NO. 43 CONC. DRIVE
(Symbol)	NO. 44 CONC. DRIVE
(Symbol)	NO. 45 CONC. DRIVE
(Symbol)	NO. 46 CONC. DRIVE
(Symbol)	NO. 47 CONC. DRIVE
(Symbol)	NO. 48 CONC. DRIVE
(Symbol)	NO. 49 CONC. DRIVE
(Symbol)	NO. 50 CONC. DRIVE
(Symbol)	NO. 51 CONC. DRIVE
(Symbol)	NO. 52 CONC. DRIVE
(Symbol)	NO. 53 CONC. DRIVE
(Symbol)	NO. 54 CONC. DRIVE
(Symbol)	NO. 55 CONC. DRIVE
(Symbol)	NO. 56 CONC. DRIVE
(Symbol)	NO. 57 CONC. DRIVE
(Symbol)	NO. 58 CONC. DRIVE
(Symbol)	NO. 59 CONC. DRIVE
(Symbol)	NO. 60 CONC. DRIVE
(Symbol)	NO. 61 CONC. DRIVE
(Symbol)	NO. 62 CONC. DRIVE
(Symbol)	NO. 63 CONC. DRIVE
(Symbol)	NO. 64 CONC. DRIVE
(Symbol)	NO. 65 CONC. DRIVE
(Symbol)	NO. 66 CONC. DRIVE
(Symbol)	NO. 67 CONC. DRIVE
(Symbol)	NO. 68 CONC. DRIVE
(Symbol)	NO. 69 CONC. DRIVE
(Symbol)	NO. 70 CONC. DRIVE
(Symbol)	NO. 71 CONC. DRIVE
(Symbol)	NO. 72 CONC. DRIVE
(Symbol)	NO. 73 CONC. DRIVE
(Symbol)	NO. 74 CONC. DRIVE
(Symbol)	NO. 75 CONC. DRIVE
(Symbol)	NO. 76 CONC. DRIVE
(Symbol)	NO. 77 CONC. DRIVE
(Symbol)	NO. 78 CONC. DRIVE
(Symbol)	NO. 79 CONC. DRIVE
(Symbol)	NO. 80 CONC. DRIVE
(Symbol)	NO. 81 CONC. DRIVE
(Symbol)	NO. 82 CONC. DRIVE
(Symbol)	NO. 83 CONC. DRIVE
(Symbol)	NO. 84 CONC. DRIVE
(Symbol)	NO. 85 CONC. DRIVE
(Symbol)	NO. 86 CONC. DRIVE
(Symbol)	NO. 87 CONC. DRIVE
(Symbol)	NO. 88 CONC. DRIVE
(Symbol)	NO. 89 CONC. DRIVE
(Symbol)	NO. 90 CONC. DRIVE
(Symbol)	NO. 91 CONC. DRIVE
(Symbol)	NO. 92 CONC. DRIVE
(Symbol)	NO. 93 CONC. DRIVE
(Symbol)	NO. 94 CONC. DRIVE
(Symbol)	NO. 95 CONC. DRIVE
(Symbol)	NO. 96 CONC. DRIVE
(Symbol)	NO. 97 CONC. DRIVE
(Symbol)	NO. 98 CONC. DRIVE
(Symbol)	NO. 99 CONC. DRIVE
(Symbol)	NO. 100 CONC. DRIVE



GENERAL NOTES

- THESE NOTES APPLY TO ALL CONSTRUCTION ACTIVITIES ON THIS PROJECT.
- ALL DIMENSIONS SHOWN ARE TO BACK OF CURB LAZE OF SIDEWALK.
- PERMITS FOR THIS PROJECT MUST BE OBTAINED FROM THE CITY OF DETROIT.
- REFER TO SHEET C-10.0 AND C-10.1 FOR ON-SITE PAVING AND SIGN.
- REFER TO SHEET C-10.2 FOR THE SIDEWALK RAMP DETAILS.
- NO PARKING THE LANY SIDE SHALL BE POSTED BASED ON THE LANE WIDTH.
- CONSTRUCTION SHALL BE IN ACCORDANCE WITH THE CITY OF DETROIT.
- THE CONTRACTOR SHALL NOTIFY THE CITY ENGINEER AND FOR THE AUTHORITY AND APPROVATION 3 BUSINESS DAYS PRIOR TO THE START OF CONSTRUCTION.
- ALL CONSTRUCTION WITHIN THE CITY RIGHT-OF-WAY SHALL CONFORM TO THE CITY ENGINEER'S SPECIFICATIONS AND REQUIREMENTS. ALL WORK SHALL BE DONE IN ACCORDANCE WITH THE CITY ENGINEER'S SPECIFICATIONS AND REQUIREMENTS.
- ALL UTILITIES SHALL BE PROTECTED AND MAINTAINED AS SHOWN ON THE PLANS. ANY CHANGES TO UTILITIES SHALL BE APPROVED BY THE CITY ENGINEER AND THE UTILITY COMPANY. THE JOB AND WILL NOT BE PAID FOR SEPARATELY.

REVISIONS

NO.	DATE	DESCRIPTION
1		
2		
3		
4		
5		
6		
7		
8		
9		
10		
11		
12		
13		
14		
15		
16		
17		
18		
19		
20		
21		
22		
23		
24		
25		
26		
27		
28		
29		
30		
31		
32		
33		
34		
35		
36		
37		
38		
39		
40		
41		
42		
43		
44		
45		
46		
47		
48		
49		
50		

PEA

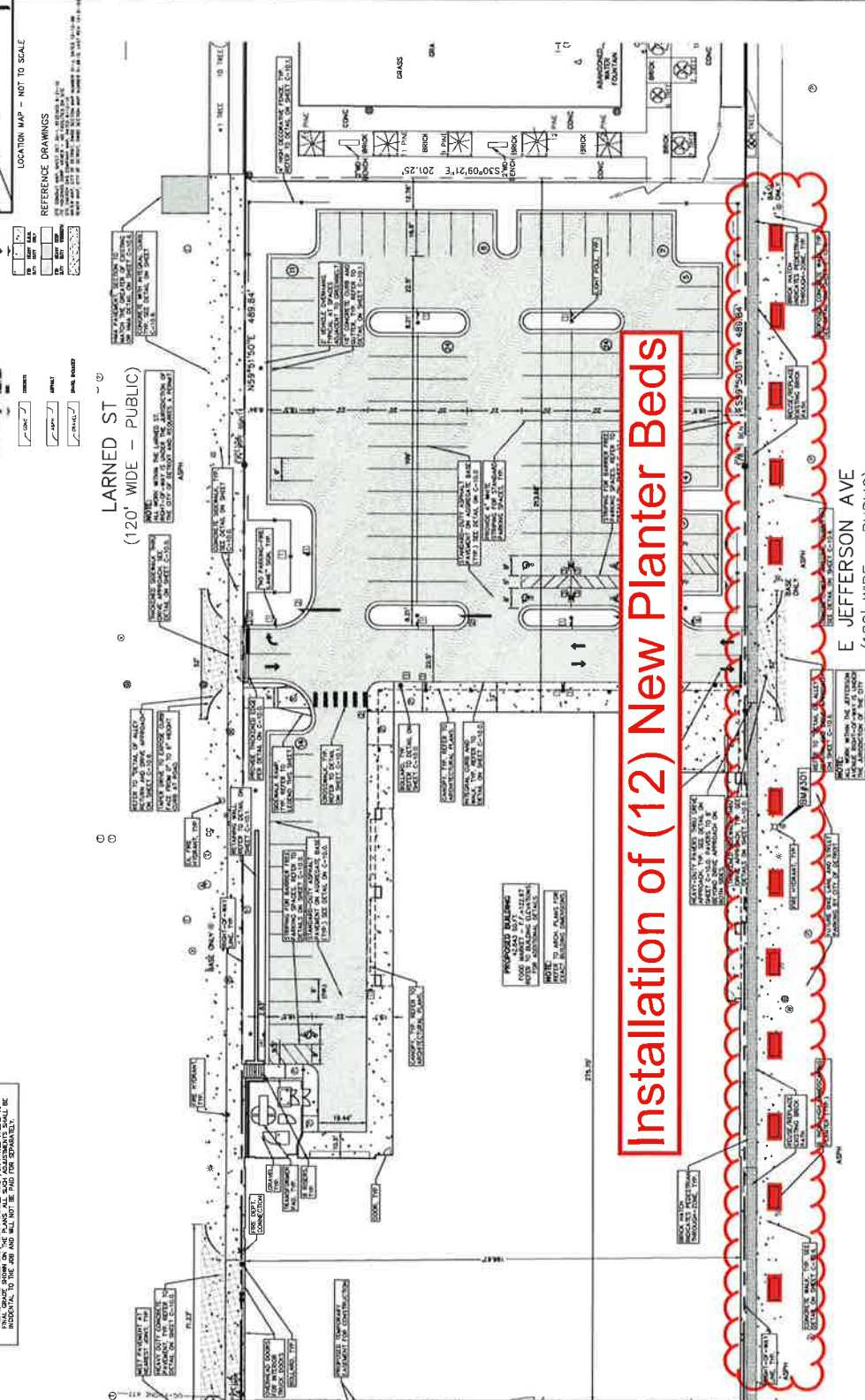
PEA, Inc.

4500 Grand River Ave.
Detroit, MI 48207
313.762.3700
www.pea.com

LSDC - NIVERTOWN MARKET

LORMAX STERN DEVELOPMENT CO

313.762.3700
www.lormax.com



LEGEND

(Symbol)	NO. 1 CONC. DRIVE
(Symbol)	NO. 2 CONC. DRIVE
(Symbol)	NO. 3 CONC. DRIVE
(Symbol)	NO. 4 CONC. DRIVE
(Symbol)	NO. 5 CONC. DRIVE
(Symbol)	NO. 6 CONC. DRIVE
(Symbol)	NO. 7 CONC. DRIVE
(Symbol)	NO. 8 CONC. DRIVE
(Symbol)	NO. 9 CONC. DRIVE
(Symbol)	NO. 10 CONC. DRIVE
(Symbol)	NO. 11 CONC. DRIVE
(Symbol)	NO. 12 CONC. DRIVE
(Symbol)	NO. 13 CONC. DRIVE
(Symbol)	NO. 14 CONC. DRIVE
(Symbol)	NO. 15 CONC. DRIVE
(Symbol)	NO. 16 CONC. DRIVE
(Symbol)	NO. 17 CONC. DRIVE
(Symbol)	NO. 18 CONC. DRIVE
(Symbol)	NO. 19 CONC. DRIVE
(Symbol)	NO. 20 CONC. DRIVE
(Symbol)	NO. 21 CONC. DRIVE
(Symbol)	NO. 22 CONC. DRIVE
(Symbol)	NO. 23 CONC. DRIVE
(Symbol)	NO. 24 CONC. DRIVE
(Symbol)	NO. 25 CONC. DRIVE
(Symbol)	NO. 26 CONC. DRIVE
(Symbol)	NO. 27 CONC. DRIVE
(Symbol)	NO. 28 CONC. DRIVE
(Symbol)	NO. 29 CONC. DRIVE
(Symbol)	NO. 30 CONC. DRIVE
(Symbol)	NO. 31 CONC. DRIVE
(Symbol)	NO. 32 CONC. DRIVE
(Symbol)	NO. 33 CONC. DRIVE
(Symbol)	NO. 34 CONC. DRIVE
(Symbol)	NO. 35 CONC. DRIVE
(Symbol)	NO. 36 CONC. DRIVE
(Symbol)	NO. 37 CONC. DRIVE
(Symbol)	NO. 38 CONC. DRIVE
(Symbol)	NO. 39 CONC. DRIVE
(Symbol)	NO. 40 CONC. DRIVE
(Symbol)	NO. 41 CONC. DRIVE
(Symbol)	NO. 42 CONC. DRIVE
(Symbol)	NO. 43 CONC. DRIVE
(Symbol)	NO. 44 CONC. DRIVE
(Symbol)	NO. 45 CONC. DRIVE
(Symbol)	NO. 46 CONC. DRIVE
(Symbol)	NO. 47 CONC. DRIVE
(Symbol)	NO. 48 CONC. DRIVE
(Symbol)	NO. 49 CONC. DRIVE
(Symbol)	NO. 50 CONC. DRIVE
(Symbol)	NO. 51 CONC. DRIVE
(Symbol)	NO. 52 CONC. DRIVE
(Symbol)	NO. 53 CONC. DRIVE
(Symbol)	NO. 54 CONC. DRIVE
(Symbol)	NO. 55 CONC. DRIVE
(Symbol)	NO. 56 CONC. DRIVE
(Symbol)	NO. 57 CONC. DRIVE
(Symbol)	NO. 58 CONC. DRIVE
(Symbol)	NO. 59 CONC. DRIVE
(Symbol)	NO. 60 CONC. DRIVE
(Symbol)	NO. 61 CONC. DRIVE
(Symbol)	NO. 62 CONC. DRIVE
(Symbol)	NO. 63 CONC. DRIVE
(Symbol)	NO. 64 CONC. DRIVE
(Symbol)	NO. 65 CONC. DRIVE
(Symbol)	NO. 66 CONC. DRIVE
(Symbol)	NO. 67 CONC. DRIVE
(Symbol)	NO. 68 CONC. DRIVE
(Symbol)	NO. 69 CONC. DRIVE
(Symbol)	NO. 70 CONC. DRIVE
(Symbol)	NO. 71 CONC. DRIVE
(Symbol)	NO. 72 CONC. DRIVE
(Symbol)	NO. 73 CONC. DRIVE
(Symbol)	NO. 74 CONC. DRIVE
(Symbol)	NO. 75 CONC. DRIVE
(Symbol)	NO. 76 CONC. DRIVE
(Symbol)	NO. 77 CONC. DRIVE
(Symbol)	NO. 78 CONC. DRIVE
(Symbol)	NO. 79 CONC. DRIVE
(Symbol)	NO. 80 CONC. DRIVE
(Symbol)	NO. 81 CONC. DRIVE
(Symbol)	NO. 82 CONC. DRIVE
(Symbol)	NO. 83 CONC. DRIVE
(Symbol)	NO. 84 CONC. DRIVE
(Symbol)	NO. 85 CONC. DRIVE
(Symbol)	NO. 86 CONC. DRIVE
(Symbol)	NO. 87 CONC. DRIVE
(Symbol)	NO. 88 CONC. DRIVE
(Symbol)	NO. 89 CONC. DRIVE
(Symbol)	NO. 90 CONC. DRIVE
(Symbol)	NO. 91 CONC. DRIVE
(Symbol)	NO. 92 CONC. DRIVE
(Symbol)	NO. 93 CONC. DRIVE
(Symbol)	NO. 94 CONC. DRIVE
(Symbol)	NO. 95 CONC. DRIVE
(Symbol)	NO. 96 CONC. DRIVE
(Symbol)	NO. 97 CONC. DRIVE
(Symbol)	NO. 98 CONC. DRIVE
(Symbol)	NO. 99 CONC. DRIVE
(Symbol)	NO. 100 CONC. DRIVE