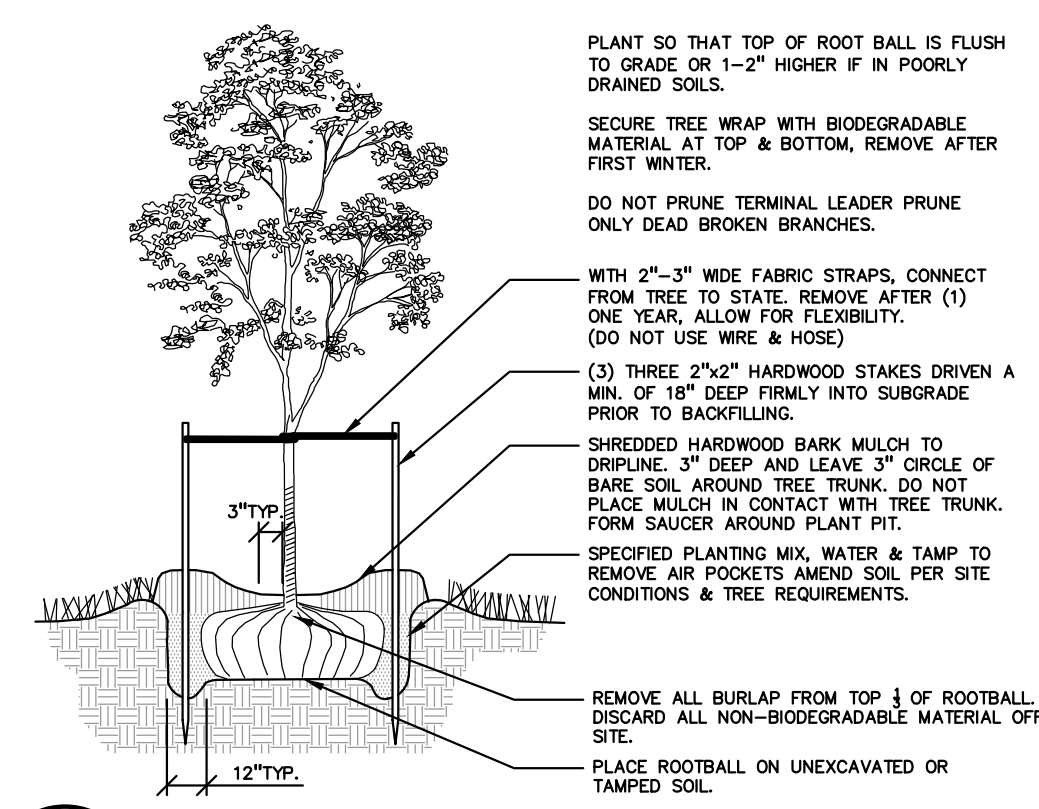
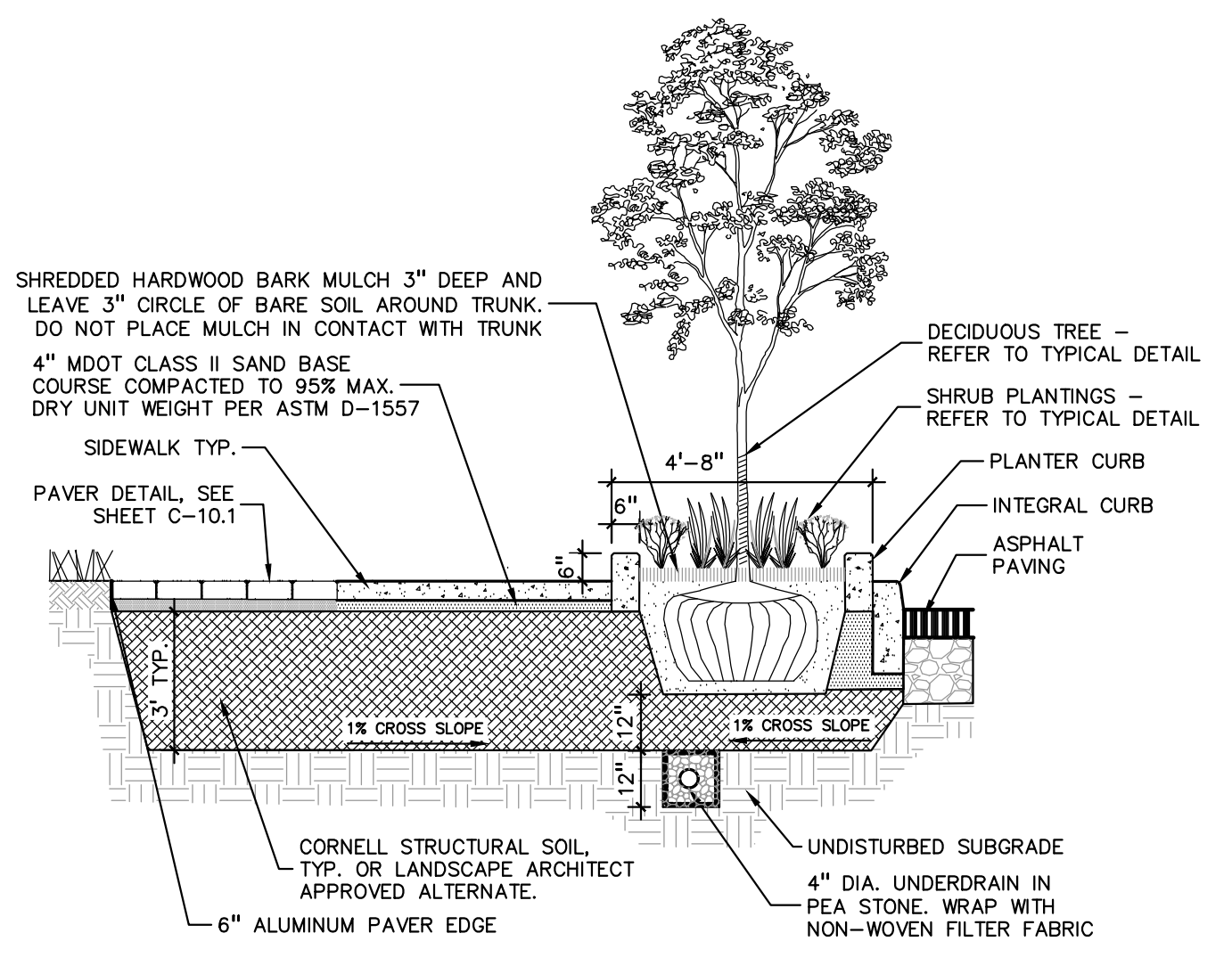


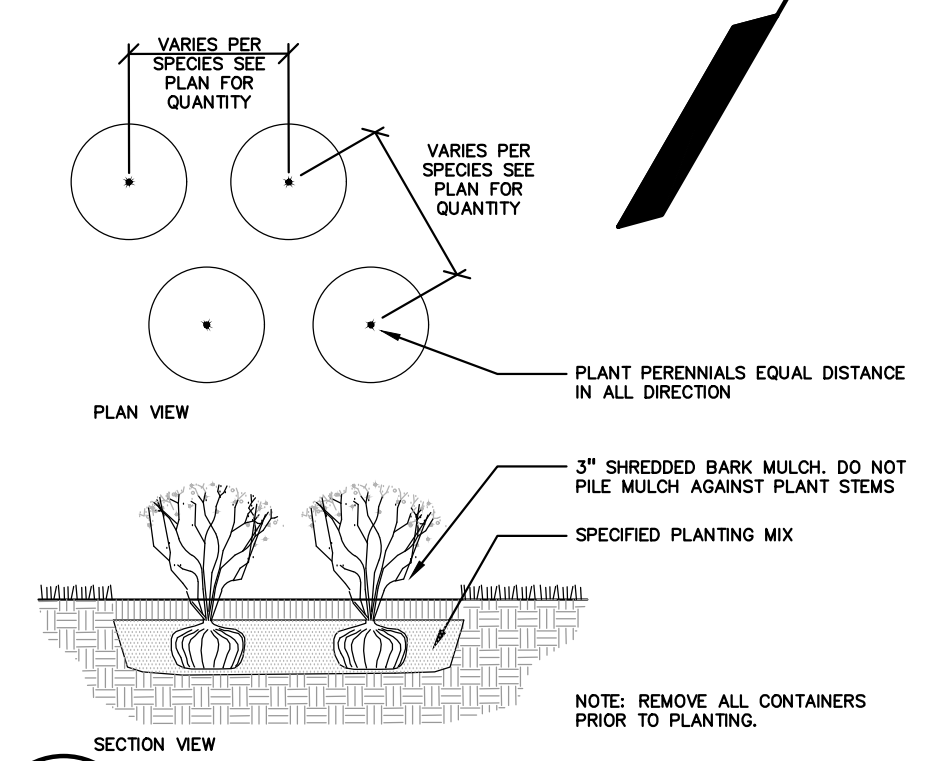
4 SHRUB PLANTING DETAIL
NOT TO SCALE



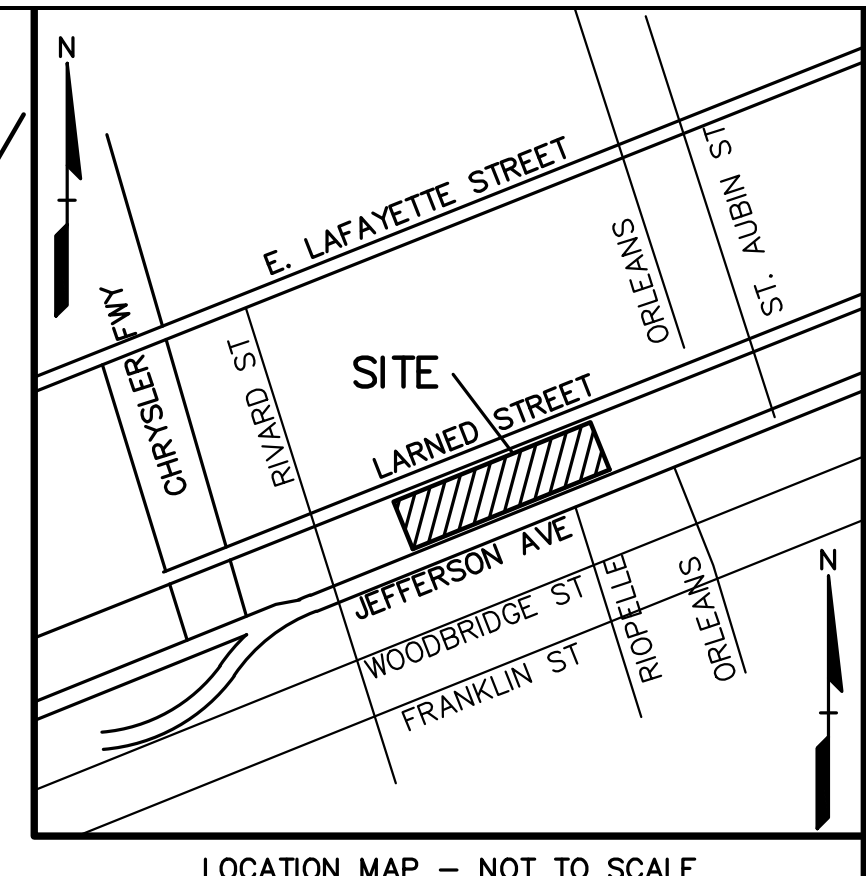
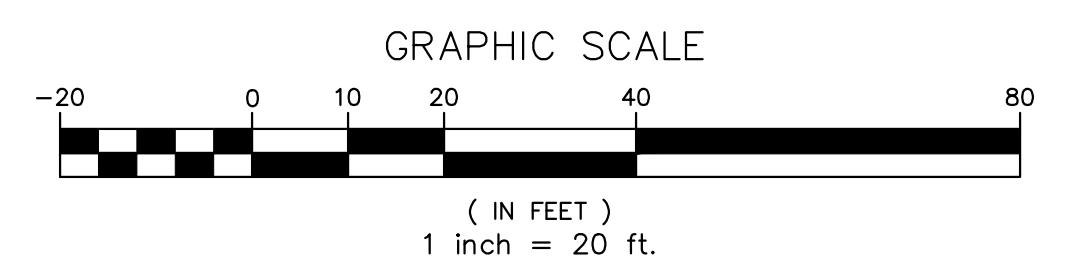
3 DECIDUOUS TREE PLANTING DETAIL
NOT TO SCALE



2 PLANTER WITH STRUCTURAL SOIL SECTION
NOT TO SCALE



1 PERENNIAL PLANTING DETAIL
NOT TO SCALE



REFERENCE DRAWINGS

DTE CONDUIT MAP, SHEET DET 35-1, RECEIVED 8-21-15
 ITC HOLDINGS CORP., VIEWER - NO.1, FACILITIES ON SITE
 DTE ENERGY GAS COMPANY MAP, DATED 8-12-15
 WATER MAP, CITY OF DETROIT, DWS SECTION MAP NUMBER 21-1, DATED 12-12-09
 SEWER MAP, CITY OF DETROIT, DWS SECTION MAP NUMBER 5-36-D, LAST REV. 12-31-03

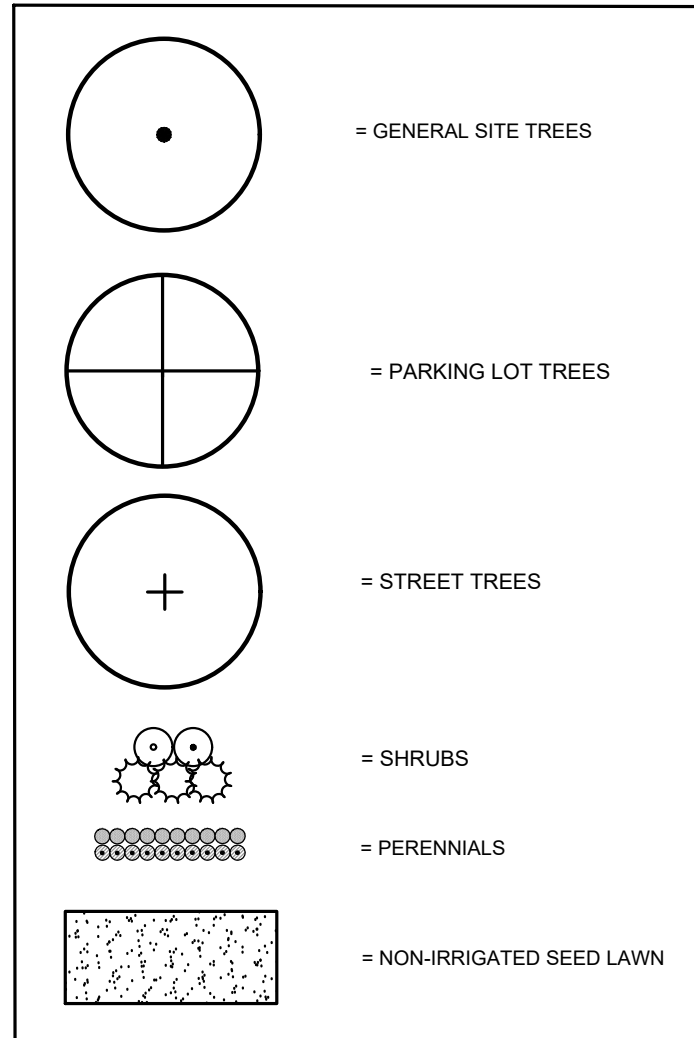
NOTE:
NO IRRIGATION ON SITE

LANDSCAPE CALCULATIONS:
PER CITY OF DETROIT ZONING ORDINANCE

STREET TREES
 REQUIRED: 1 DEC. TREE /40 LF OF FRONTAGE. 489LF ON LARNED/40 = 12 TREES REQUIRED.
 PROVIDED: 12 TREES PROVIDED.

PARKING LOT LANDSCAPE
 REQUIRED: 30\"/>

KEY:



GENERAL PLANTING NOTES:

- LANDSCAPE CONTRACTOR SHALL VISIT SITE, INSPECT EXISTING SITE CONDITIONS AND REVIEW PROPOSED PLANTING AND RELATED WORK. IN CASE OF DISCREPANCY BETWEEN PLAN AND PLANT LIST, PLAN SHALL GOVERN QUANTITIES. CONTACT LANDSCAPE ARCHITECT WITH ANY CONCERNS.
- ALL PLANT MATERIAL TO BE PREMIUM GRADE NURSERY STOCK AND SHALL SATISFY AMERICAN ASSOCIATION OF NURSERYMEN STANDARD FOR NURSERY STOCK. ALL LANDSCAPE MATERIAL SHALL BE NORTHERN GROWN, NO. 1, GRADE.
- THE OWNER'S REPRESENTATIVE RESERVES THE RIGHT TO REJECT ANY PLANT MATERIAL NOT MEETING SPECIFICATIONS.
- ALL SINGLE STEM SHADE TREES TO HAVE STRAIGHT TRUNKS AND SYMMETRICAL CROWNS.
- ALL SINGLE TRUNK SHADE TREES TO HAVE A CENTRAL LEADER; TREES WITH FORKED OR IRREGULAR TRUNKS WILL NOT BE ACCEPTED.
- ALL MULTI STEM TREES SHALL BE HEAVILY BRANCHED AND HAVE SYMMETRICAL CROWNS. ONE SIDED TREES OR THOSE WITH THIN OR OPEN CROWNS SHALL NOT BE ACCEPTED.
- ALL TREES TO HAVE CLAY OR CLAY LOAM BALLS, TREES WITH SAND BALLS WILL BE REJECTED.
- ALL PLANTING BEDS SHALL RECEIVE 3\"/>

PLANT LIST:

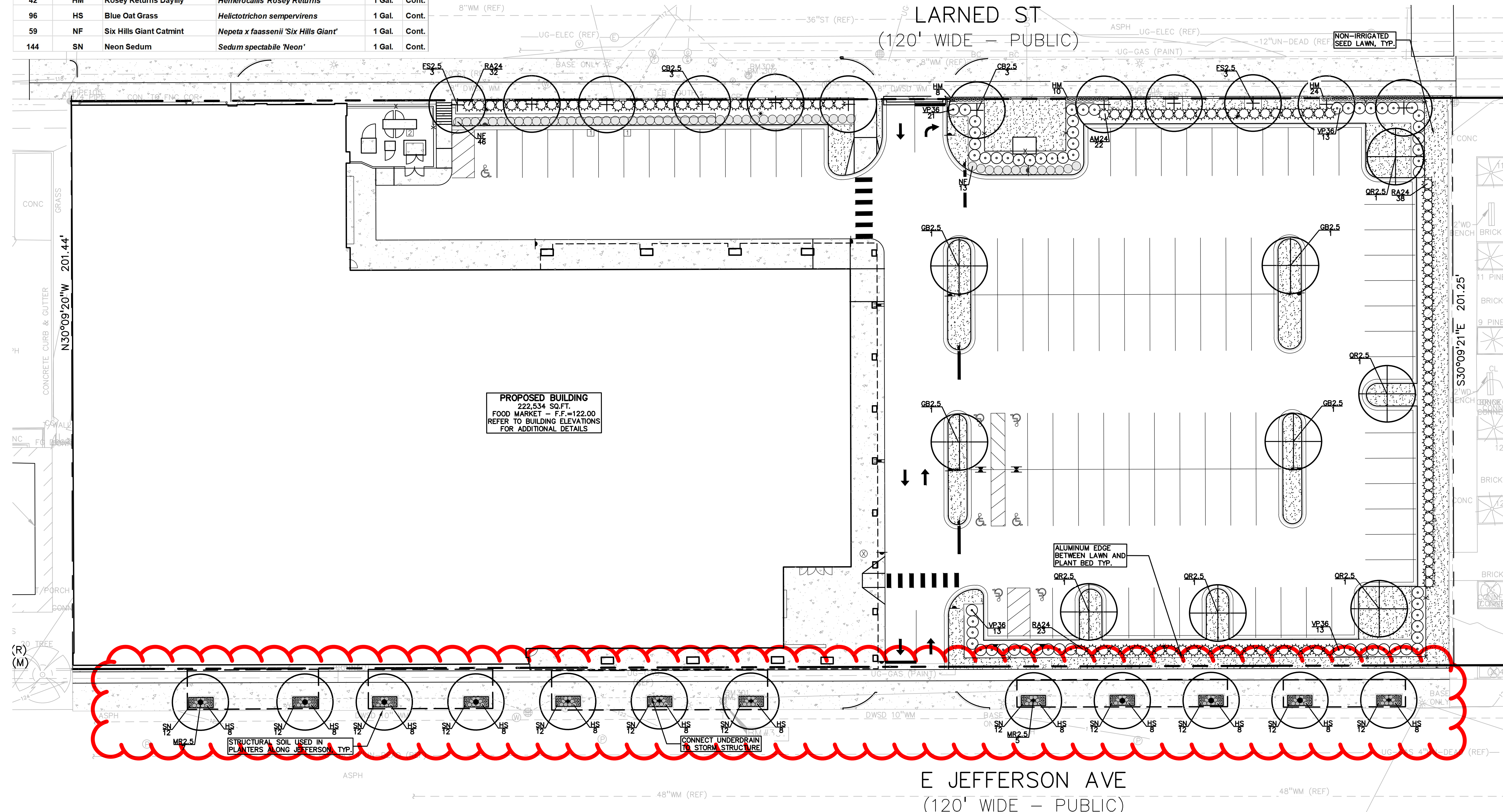
QUANTITY	KEY SYMBOL	COMMON NAME	SCIENTIFIC NAME	SIZE	SPEC
6	CB2.5	Columnar European Hornbeam	<i>Carpinus betulus 'Columnaris'</i>	2.5" Cal.	B&B
6	FS2.5	Columnar European Beech	<i>Fagus sylvatica 'Fastigiata'</i>	2.5" Cal.	B&B
4	GB2.5	Princeton Sentry Ginkgo	<i>Ginkgo biloba 'PNI 2720'</i>	2.5" Cal.	B&B
12	MR2.5	Red Barron Crab	<i>Malus 'Red Barron'</i>	2.5" Cal.	B&B
5	QR2.5	Regal Prince Oak	<i>Quercus robur x bicolor 'Long'</i>	2.5" Cal.	B&B

SHRUB PLANT LIST:

QUANTITY	KEY SYMBOL	COMMON NAME	SCIENTIFIC NAME	SIZE	SPEC
22	AM24	Red Chokeberry	<i>Aronia melanocarpa</i>	24" Ht.	Cont.
99	RA24	Alpine Currant	<i>Ribes alpinum</i>	24" Sprd	Cont.
61	VP36	Summer Snowflake Viburnum	<i>Viburnum plicatum 'Summer Snowflake'</i>	36" Ht.	Cont.

PERENNIAL PLANT LIST:

QUANTITY	KEY SYMBOL	COMMON NAME	SCIENTIFIC NAME	SIZE	SPEC
42	HM	Rosey Returns Daylily	<i>Hemerocallis 'Rosey Returns'</i>	1 Gal.	Cont.
96	HS	Blue Oat Grass	<i>Helictotrichon sempervirens</i>	1 Gal.	Cont.
59	NF	Six Hills Giant Catmint	<i>Nepeta x faassenii 'Six Hills Giant'</i>	1 Gal.	Cont.
144	SN	Neon Sedum	<i>Sedum spectabile 'Neon'</i>	1 Gal.	Cont.



REVISIONS

NO.	BY	DATE	DESCRIPTION
1	ESB	03/07/20	REVISED PER OWNER
2	ESB	03/08/20	REVISED PER OWNER COMMENTS
3	ESB	02/14/20	REVISED PER CITY OF DETROIT
4	ESB	01/22/20	REVISED PER PERMIT
5	ESB	01/22/20	REVISED PER CITY COMMENTS
6	ESB	01/22/20	REVISED PER CITY COMMENTS



CAUTION!
 THE LOCATIONS AND ELEVATIONS OF EXISTING UNDERGROUND UTILITIES AS SHOWN ON THIS DRAWING ARE ONLY APPROXIMATE. NO GUARANTEE IS EITHER EXPRESSED OR IMPLIED AS TO THE COMPLETENESS OR ACCURACY THEREOF. THE CONTRACTOR SHALL BE EXCLUSIVELY RESPONSIBLE FOR VERIFYING THE EXACTITY OF LOCATIONS AND ELEVATIONS PRIOR TO THE START OF CONSTRUCTION.

THIS DRAWING AND DESIGN ARE THE PROPERTY OF PEA, INC. AND ARE SUBMITTED ON THE CONDITION THAT THEY ARE NOT TO BE USED, REPRODUCED, OR COPIED IN WHOLE OR IN PART, OR USED FOR FURNISHING INFORMATION TO OTHERS, WITHOUT THE PRIOR WRITTEN CONSENT OF PEA, INC. ALL COMMON LAW RIGHTS OF COPYRIGHT AND OTHERWISE ARE HEREBY SPECIFICALLY RESERVED. © 2019 PEA, INC.

CONSTRUCTION CONTRACTOR AGREES THAT IN ACCORDANCE WITH ACCEPTED CONSTRUCTION PRACTICES, CONSTRUCTION CONTRACTOR SHALL BE REQUIRED TO ASSUME SOLE AND COMPLETE RESPONSIBILITY FOR JOB SITE CONDITIONS DURING THE COURSE OF CONSTRUCTION OF THE PROJECT, INCLUDING SAFETY OF ALL PERSONS AND PROPERTY. THAT THIS REQUIREMENT SHALL BE IN ADDITION TO ANY OTHER REQUIREMENTS RELATIVE TO NORMAL WORKING HOURS AND CONSTRUCTION CONTRACTOR'S OBLIGATIONS TO THE PUBLIC. CONTRACTOR SHALL HOLD DESIGN PROFESSIONAL HARBOR FROM ANY AND ALL LIABILITY REAL OR ALLEGED IN CONNECTION WITH THE PERFORMANCE OF THIS PROJECT EXCEPTING LIABILITY ARISING FROM THE SOLE NEGLIGENCE OF THE DESIGN PROFESSIONAL.

3 FULL WORKING DAYS BEFORE YOU DIG CALL
811
 Know what's Below
 Call before you dig
 MISS DIG System, Inc.
 1-800-482-7171 www.missdig.org



PEA, Inc.
 45 W. Grand River Ave., Ste. 501
 Detroit, MI 48226
 T: 313.769.5770
 www.peainc.com

LORMAX STERN DEVELOPMENT CO
 36500 WOODWARD AVE., SUITE 200
 BLOOMFIELD HILLS, MI 48304

LANDSCAPE PLAN
 LSDC - RIVERTOWN MARKET
 PART OF THE PRIVATE CLAIMS
 CITY OF DETROIT, WAYNE COUNTY, MICHIGAN

DES: ESB DN: JRW SUR: PEA P.M. JPB
 S:\PROJECTS\2015\2015205\DWG\CONSTRUCTION\X-TBLK-15205.dwg

ORIGINAL ISSUE DATE:
NOVEMBER 15, 2019

PEA JOB NO. 2015-205

SCALE: 1" = 20'

DRAWING NUMBER:
L-1.0

REF: S:\PROJECTS\2015\2015205\DWG\15205-TOPOBASE.DWG
 XREF: S:\PROJECTS\2015\2015205\DWG\CONSTRUCTION\X-BASE-15205.DWG
 XREF: S:\PROJECTS\2015\2015205\DWG\CONSTRUCTION\X-TBLK-15205.DWG