

Janice M. Winfrey
City Clerk

City of Detroit
OFFICE OF THE CITY CLERK

Andre P. Gilbert II
Deputy City Clerk

DEPARTMENTAL REFERENCE COMMUNICATION

Friday, October 2, 2020

To: The Department or Commission Listed Below

From: Janice M. Winfrey, Detroit City Clerk

The following petition is herewith referred to you for report and recommendation to the City Council.

In accordance with that body's directive, kindly return the same with your report in duplicate within four (4) weeks.

PLANNING AND DEVELOPMENT DEPARTMENT DPW - CITY ENGINEERING DIVISION

1342 *Godfrey PropCo, LLC / Giffels Webster, petition for various vacations and encroachments related to the Godfrey Hotel Project located on the south side of Michigan Ave and the west side of 8th st.*



CITY OF DETROIT
DEPARTMENT OF PUBLIC WORKS
CITY ENGINEERING DIVISION

1342
COLEMAN A. YOUNG MUNICIPAL CENTER
2 WOODWARD AVE. SUITE 601
DETROIT, MICHIGAN 48226
PHONE: (313) 224-3949 • TTY: 711
FAX: (313) 224-3471
WWW.DETROITMI.GOV

To: Clerk's Office
From: The Department of Public Works
City Engineering Division
MapsandRecordsBureau@DetroitMI.Gov
(313) 224-3970

Petitioner:
Godfrey PropCo, LLC
Represented by Giffels Webster
28 West Adams Avenue, Suite 1200
Detroit, MI 48226
313-962-4442

On behalf of the above mentioned petitioner the Department of Public Works: City Engineering Division is submitting a petition request for the below mentioned action. The petitioner has received a project consultation from the Department of Public Works: City Engineering Division and has been advised the following:

Type of action recommended:

Petition for various vacations and encroachments related to the Godfrey Hotel Project located on the south side of Michigan Avenue and the west side of 8th Street.

Based on the scope of the project the following requirements have been outlined:

- No further requirements noted.

Sincerely,

Jered Dean
Manager II
Maps and Records Bureau



September 22, 2020

Honorable Detroit City Council
C/o Detroit City Clerk
200 Coleman A. Young Municipal Center
2 Woodward Avenue
Detroit, Michigan 48226

RE: Giffels Webster – Request for a series of encroachments and outright vacations into of the rights-of-way within the block bounded by Michigan Avenue (120 feet wide), Eighth Street (50 feet wide), Leverette Street (60 feet wide), and Trumbull Avenue (100 feet wide).

Giffels Webster, 28 W. Adams, Suite 1200, Detroit, Michigan 48226 on behalf of Godfrey PropCo, LLC, 350 W. Hubbard, Suite 440, Chicago, IL 60654, respectfully requests the following outright vacations and encroachments into the rights-of-way within the block bounded by Michigan Avenue (120 feet wide), Eighth Street (50 feet wide), Leverette Street (60 feet wide), and Trumbull Avenue (100 feet wide), in the City of Detroit:

- An outright vacation of the public alley (20 feet wide) that goes from the western Eighth Street (50 feet wide) right-of-way to 142.3 feet west for the northern 10 feet of the alley and 138.2 feet west for the southern half of the alley.
- An outright vacation of two (20 feet wide) public utility easements. One starts at the northern right-of-way of Leverette Street (60 feet wide) 68.4 feet west of Eighth Street (50 feet wide) and extends 130.0 feet north. The other starts at the northern right-of-way of Leverette Street (60 feet wide) 93.4 feet west of the Eighth Street (50 feet wide) and extends 130.0 feet north.
- Encroachments into the Eighth Street (50 feet wide), Leverette Street (60 feet wide), and public alley (20 feet wide) rights-of-way for frost slabs and door swings.
- Above grade encroachment that extends 1.0' into the Eighth Street (50 feet wide) and Leverette Street (60 feet wide) rights-of-way from grade to 203.0' above grade for building elements and lighting.
- Above grade encroachment that extends 7.0' into the Eighth Street (50 feet wide) from 10.2' above grade to 11.8' above grade for a canopy.

The requested encroachments and outright vacations is a critical part of the Godfrey Hotel project. Please refer to the attached detailed sketch for further clarification.

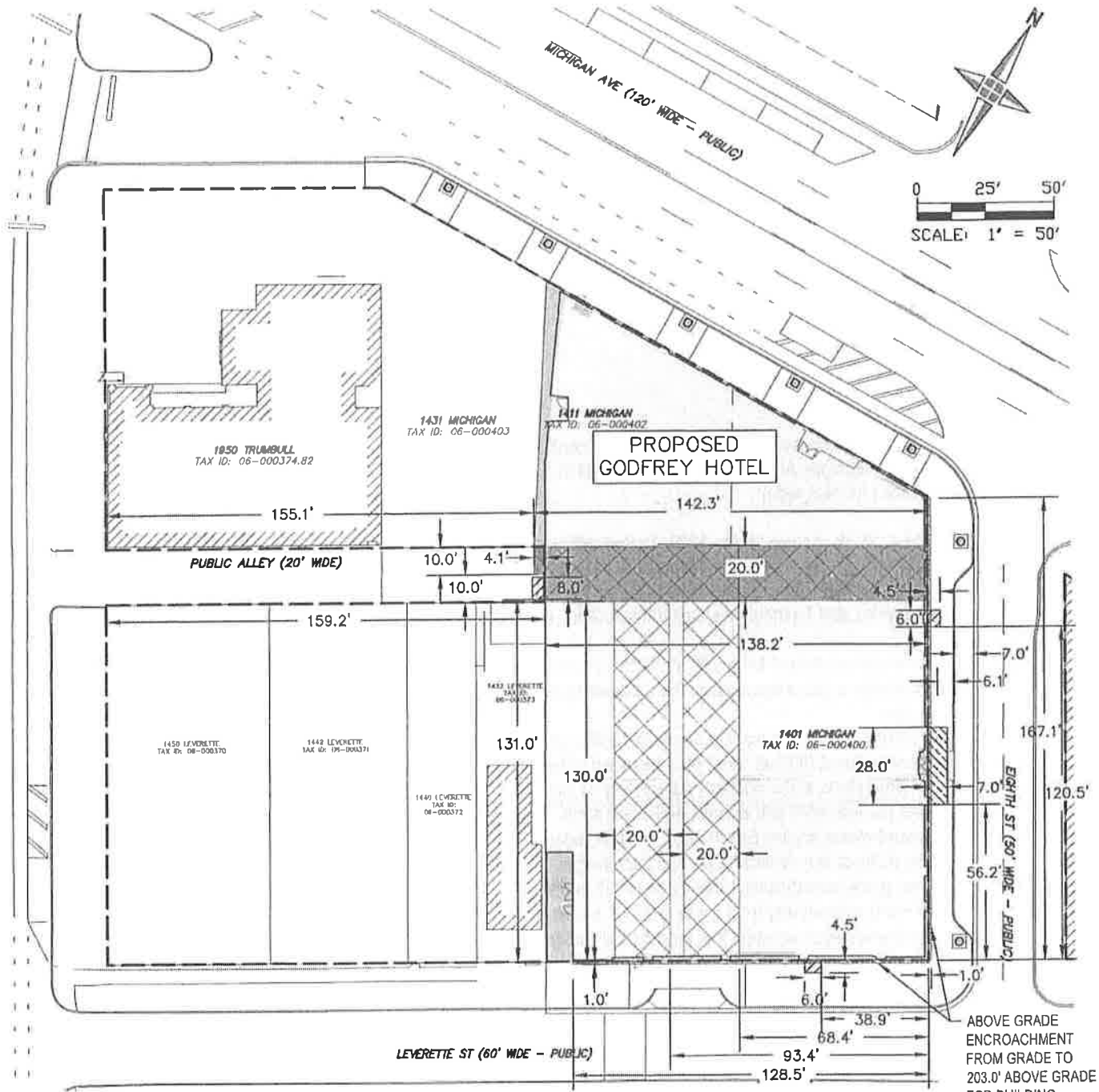
If you should have any questions, please do not hesitate to contact me at (P) 313.962.4442 (M) 313.980.1469 or at mmarks@giffelswebster.com.



Respectfully,



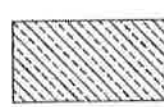
A handwritten signature in black ink, appearing to read "Michael Marks".

Michael Marks P.E.,
Partner
Giffels Webster

attachment



-  OUTRIGHT VACATION OF PUBLIC ALLEY
-  OUTRIGHT VACATION OF PUBLIC UTILITY EASEMENTS

-  ENCROACHMENT FOR FROST SLABS AND DOOR SWINGS
-  ABOVE GRADE ENCROACHMENT FROM GRADE TO 203.0' ABOVE GRADE FOR BUILDING ELEMENTS AND LIGHTING
-  ABOVE GRADE ENCROACHMENT FROM 10.2' ABOVE GRADE TO 11.8' ABOVE GRADE FOR A CANOPY

ABOVE GRADE ENCROACHMENT FROM GRADE TO 203.0' ABOVE GRADE FOR BUILDING ELEMENTS AND LIGHTING

giffels webster
 Engineers Surveyors Planners
 Landscape Architects

28 West Adams Road
 Suite 1200
 Detroit, MI 48226
 p (313) 962-4442
 f (313) 962-5068
 www.giffelswebster.com

RIGHT-OF-WAY MODIFICATION
 GODFREY HOTEL
 9/22/2020

2020-10-02

1342

1342 *Petition of Godfrey PropCo, LLC /
Giffels Webster, petition for various
vacations and encroachments related
to the Godfrey Hotel Project located
on the south side of Michigan Ave and
the west side of 8th st.*

REFERRED TO THE FOLLOWING DEPARTMENT(S)

PLANNING AND DEVELOPMENT DEPARTMENT DPW -
CITY ENGINEERING DIVISION