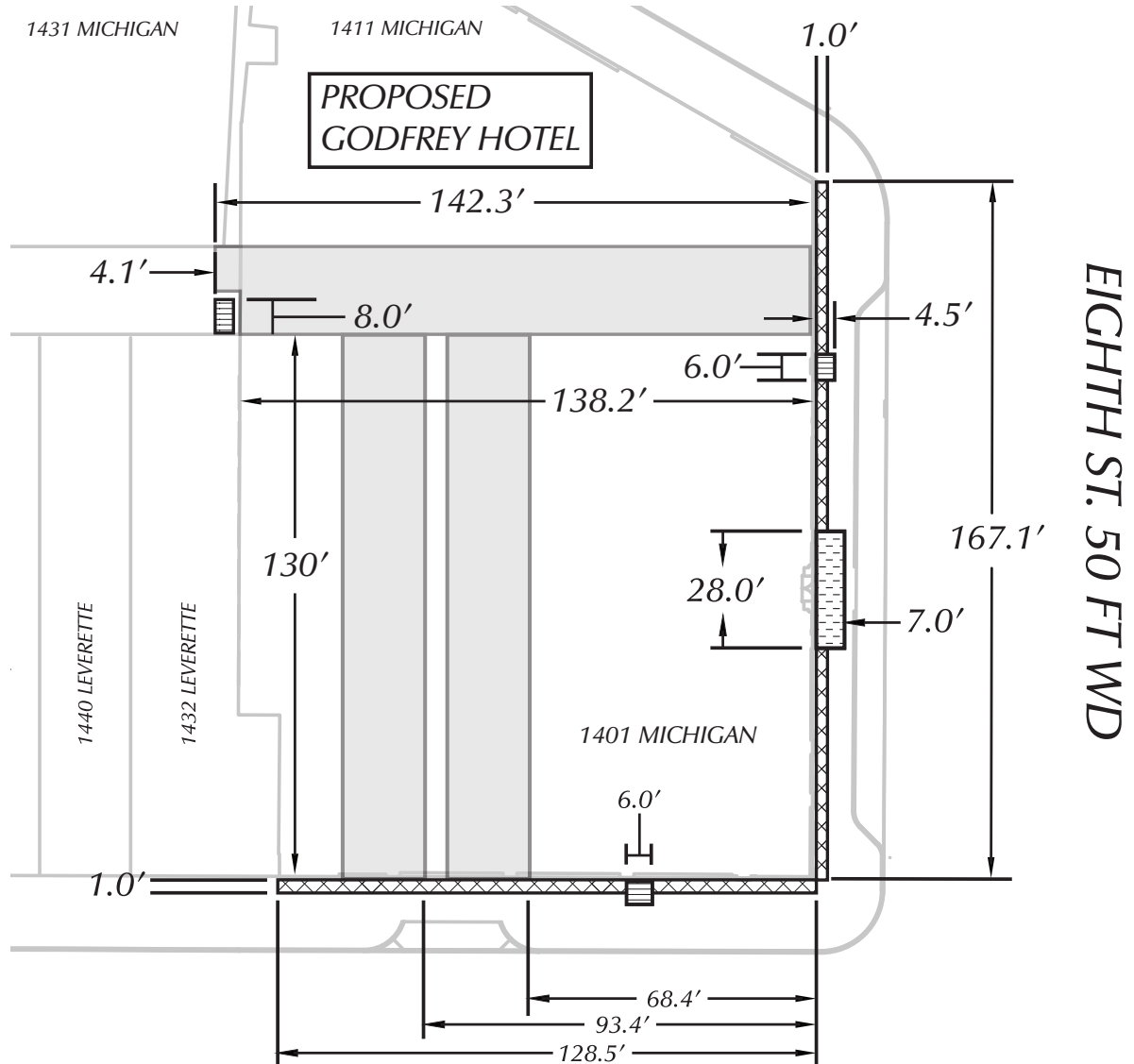


PETITION NO. XXXX
 C/O MICHAEL MARKS FROM GIFFELS WEBSTER
 28 W. ADAMS, SUITE 1200, DETROIT, MICHIGAN 48226
 (P) 313.962.4442 (M) 313.980.1469
 MMARKS@GIFFELSWEBSTER.COM



LEVERETTE ST. 60 FT WD

- ABOVE GRADE ENCROACHMENT FROM GRADE TO 203.0' ABOVE GRADE FOR BUILDING ELEMENTS AND LIGHTING.
- ABOVE GRADE ENCROACHMENT FROM 10.2' ABOVE GRADE TO 11.8' ABOVE GRADE FOR A CANOPY.
- ENCROACHMENT FOR FROST SLABS AND DOOR SWINGS

(FOR OFFICE USE ONLY)

CARTO 28

B					
	A				
DESCRIPTION		DRWN	CHKD	APPD	DATE
REVISIONS					
DRAWN BY		CHECKED			
DATE		APPROVED BY			
09-28-20		JD			

AN OUTRIGHT VACATION OF ALLEY,
 PUBLIC UTILILITY EASEMENTS, AND
 ENCROACHMENTS IN THE BLOCK BOUND
 BY MICHIGAN AVE., EIGHTH ST.,
 LEVERETTE ST., AND TRUMBULL ST.

CITY OF DETROIT	
CITY ENGINEERING DIVISION	
SURVEY BUREAU	
JOB NO.	01-02
DRWG. NO.	X