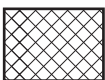
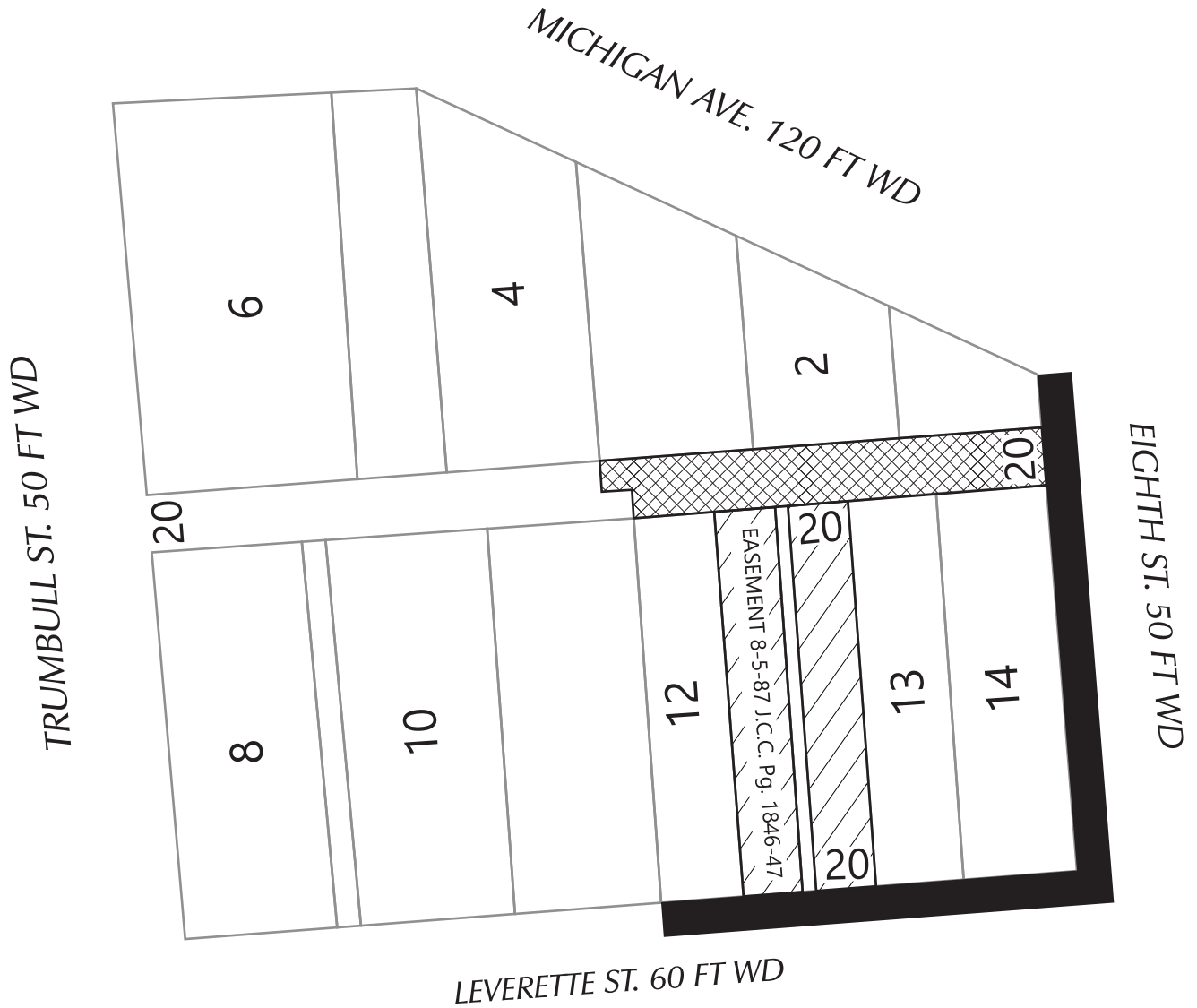


PETITION NO. 1342  
 C/O MICHAEL MARKS  
 GIFFELS WEBSTER  
 28 W. ADAMS, SUITE 1200, DETROIT, MICHIGAN 48226  
 (P) 313.962.4442 (M) 313.980.1469  
 MMARKS@GIFFELSWEBSTER.COM



- OUTRIGHT VACATION OF PUBLIC ALLEYS



- OUTRIGHT VACATION OF PUBLIC UTILITY EASEMENTS



- MULTIPLE ENCROACHMENTS

(FOR OFFICE USE ONLY)

CARTO 28

<b>B</b>					
<b>A</b>					
DESCRIPTION	DRWN	CHKD	APPD	DATE	
REVISIONS					
DRAWN BY	KJ		CHECKED		
DATE	09-28-20		APPROVED BY	JD	

AN OUTRIGHT VACATION OF ALLEY,  
 PUBLIC UTILITY EASEMENTS, AND  
 ENCROACHMENTS IN THE BLOCK BOUND  
 BY MICHIGAN AVE., EIGHTH ST.,  
 LEVERRETTE ST., AND TRUMBULL ST.

**CITY OF DETROIT**  
 CITY ENGINEERING DIVISION  
 SURVEY BUREAU

JOB NO. 01-01

DRWG. NO. X

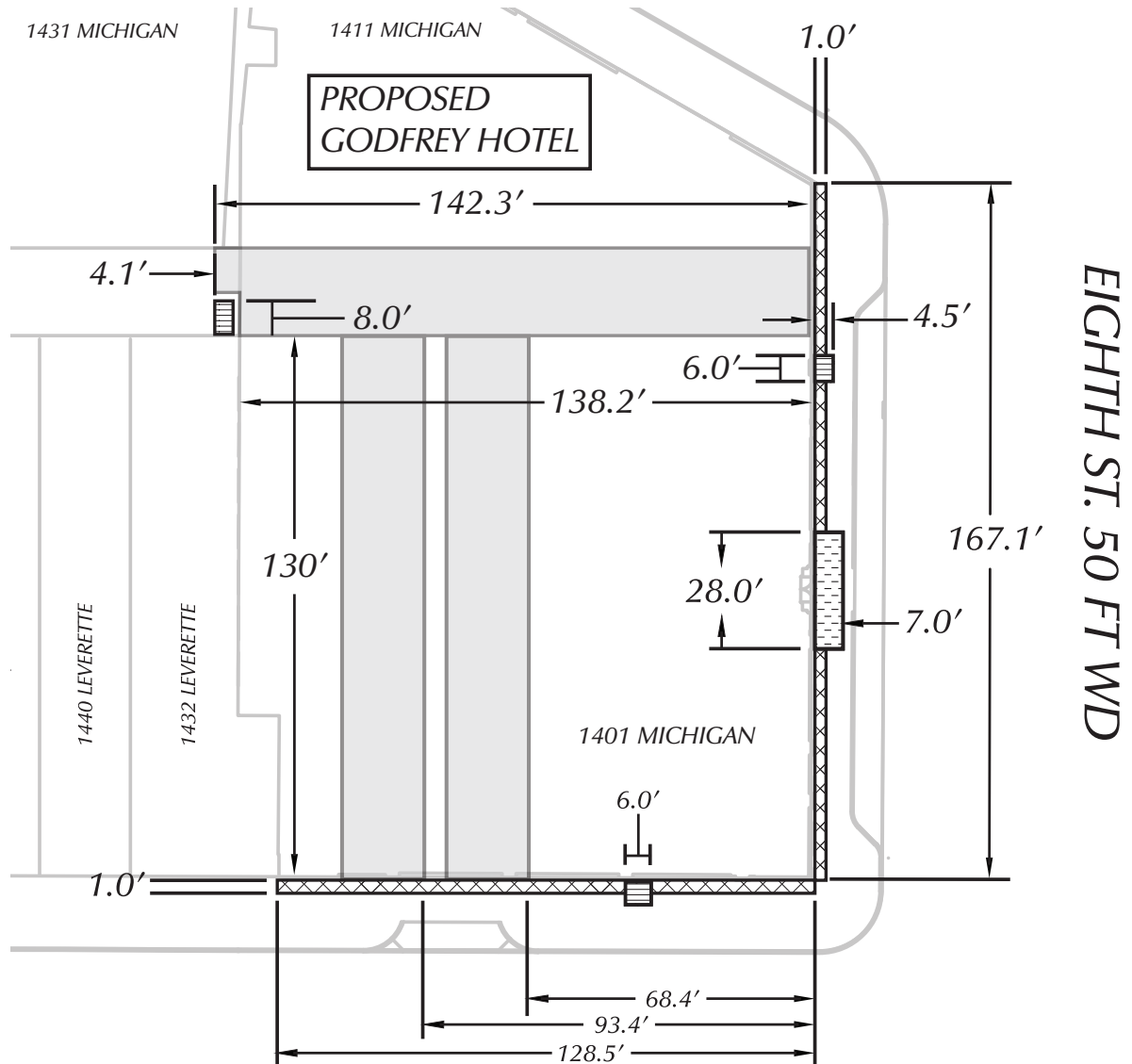
PETITION NO. 1342

C/O MICHAEL MARKS FROM GIFFELS WEBSTER

28 W. ADAMS, SUITE 1200, DETROIT, MICHIGAN 48226

(P) 313.962.4442 (M) 313.980.1469

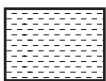
MMARKS@GIFFELSWEBSTER.COM



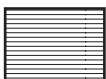
**LEVERETTE ST. 60 FT WD**



- ABOVE GRADE ENCROACHMENT FROM GRADE TO 203.0' ABOVE GRADE FOR BUILDING ELEMENTS AND LIGHTING.



- ABOVE GRADE ENCROACHMENT FROM 10.2' ABOVE GRADE TO 11.8' ABOVE GRADE FOR A CANOPY.



- ENCROACHMENT FOR FROST SLABS AND DOOR SWINGS

(FOR OFFICE USE ONLY)

CARTO 28

<b>B</b>					
<b>A</b>					
DESCRIPTION	DRWN	CHKD	APPD	DATE	
REVISIONS					
DRAWN BY	KJ		CHECKED		
DATE	09-28-20		APPROVED BY	JD	

AN OUTRIGHT VACATION OF ALLEY,  
PUBLIC UTILILITY EASEMENTS, AND  
ENCROACHMENTS IN THE BLOCK BOUND  
BY MICHIGAN AVE., EIGHTH ST.,  
LEVERETTE ST., AND TRUMBULL ST.

<b>CITY OF DETROIT</b>	
CITY ENGINEERING DIVISION	
SURVEY BUREAU	
JOB NO.	01-02
DRWG. NO.	X