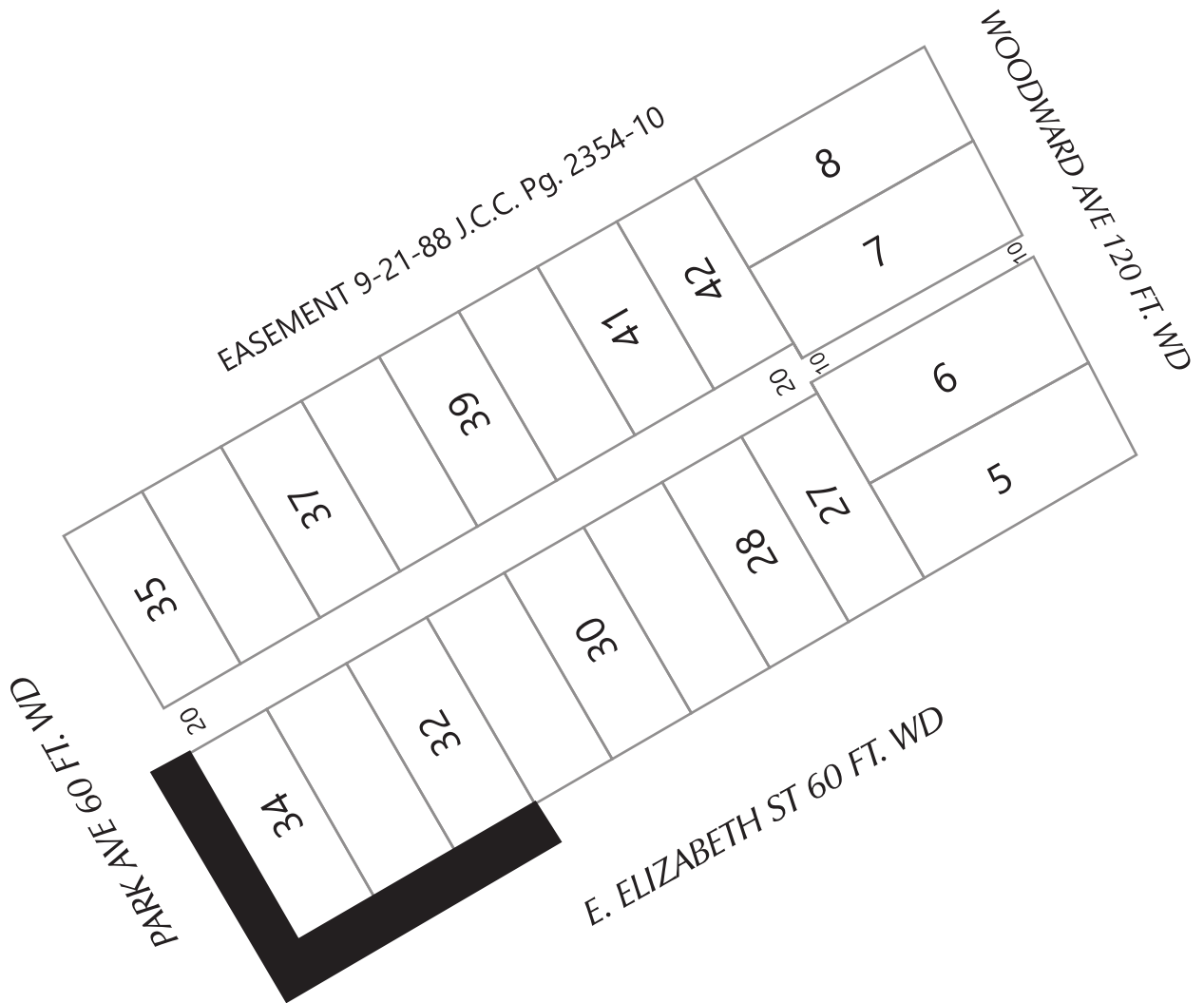


PETITION NO.1340
 C/O MICHAEL MARKS
 GIFFELS WEBSTER
 28 W. ADAMS, SUITE 1200, DETROIT, MICHIGAN 48226
 (P) 313.962.4442 (M) 313.980.1469
 MMARKS@GIFFELSWEBSTER.COM



 - MULTIPLE ENCROACHMENTS

(FOR OFFICE USE ONLY)

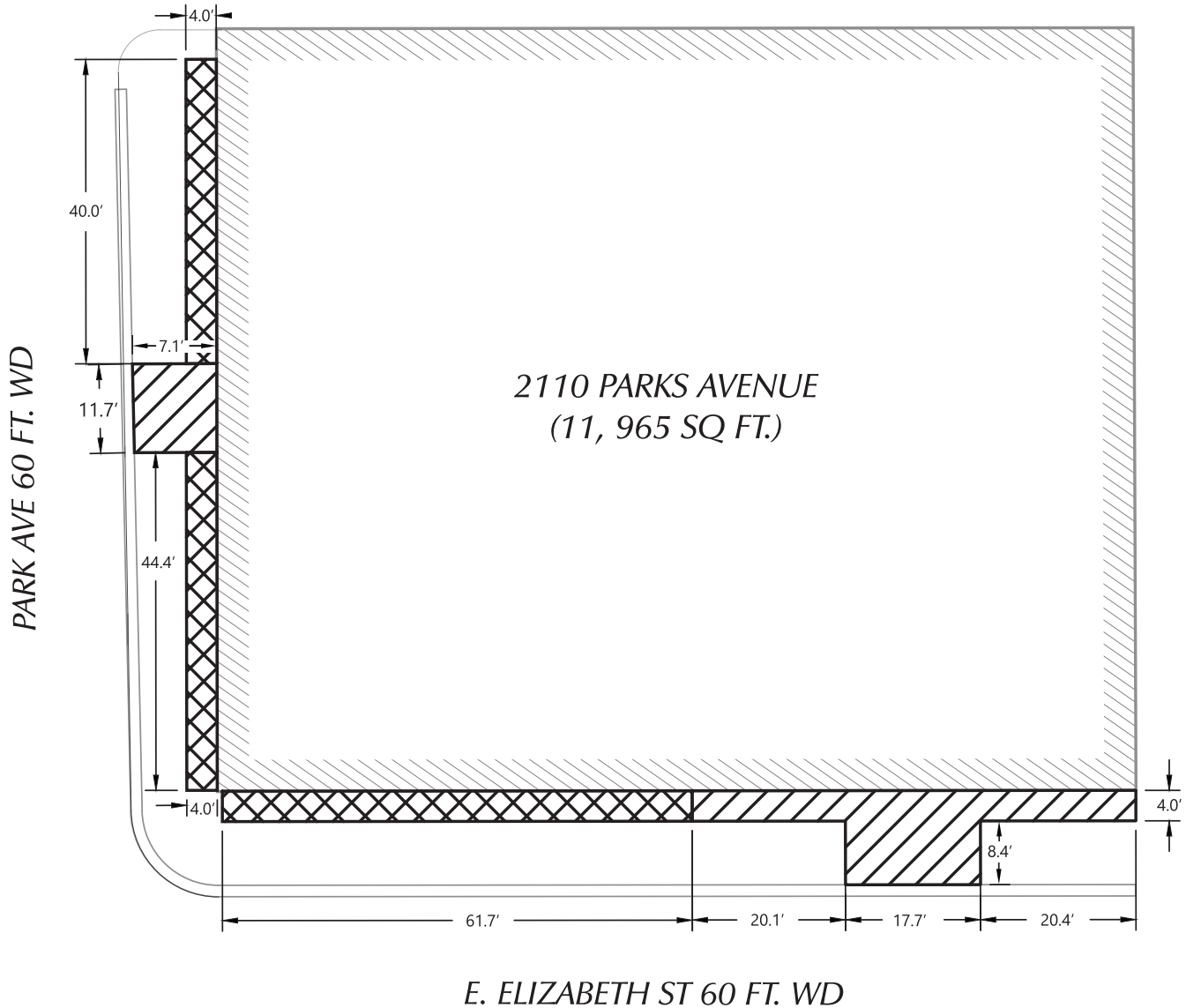
CARTO 29 E

B					
A					
DESCRIPTION	DRWN	CHKD	APPD	DATE	
REVISIONS					
DRAWN BY	KJ		CHECKED		
DATE	09-23-20		APPROVED BY	JD	

MULTIPLE ENCROACHMENTS IN THE
 BLOCK BOUND BY WOODWARD AVE.,
 ELIZABETH ST., PARK AVE., AND THE ALLEY
 FORMELY KNOW AS COLUMBIA ST.

CITY OF DETROIT	
CITY ENGINEERING DIVISION	
SURVEY BUREAU	
JOB NO.	01-01
DRWG. NO.	X

PETITION NO. 1340
 C/O MICHAEL MARKS
 GIFFELS WEBSTER
 28 W. ADAMS, SUITE 1200, DETROIT, MICHIGAN 48226
 (P) 313.962.4442 (M) 313.980.1469
 MMARKS@GIFFELSWEBSTER.COM



- ABOVE GRADE ENCROACHMENT FOR AWNINGS
- BEGINNING AT 9.1' ABOVE GRADE AND EXTENDING TO 14.0' ABOVE GRADE
- ABOVE GRADE ENCROACHMENT FOR AWNINGS
- BEGINNING AT 7.0' ABOVE GRADE AND EXTENDING TO 10.7' ABOVE GRADE

(FOR OFFICE USE ONLY)

CARTO 29 E

B					
A					
DESCRIPTION		DRWN	CHKD	APPD	DATE
REVISIONS					
DRAWN BY	KJ	CHECKED			
DATE	09-23-20	APPROVED BY JD			

MULTIPLE ENCROACHMENTS IN THE
 BLOCK BOUND BY WOODWARD AVE.,
 ELIZABETH ST., PARK AVE., AND THE ALLEY
 FORMELY KNOW AS COLUMBIA ST

CITY OF DETROIT	
CITY ENGINEERING DIVISION	
SURVEY BUREAU	
JOB NO.	01-01
DRWG. NO.	X