

Janice M. Winfrey
City Clerk

City of Detroit
OFFICE OF THE CITY CLERK

Andre P. Gilbert II
Deputy City Clerk

DEPARTMENTAL REFERENCE COMMUNICATION

Thursday, September 17, 2020

To: The Department or Commission Listed Below

From: Janice M. Winfrey, Detroit City Clerk

The following petition is herewith referred to you for report and recommendation to the City Council.

In accordance with that body's directive, kindly return the same with your report in duplicate within four (4) weeks.

PLANNING AND DEVELOPMENT DEPARTMENT DPW - CITY ENGINEERING DIVISION

1333 *Parkstone Development Partners / Frontier Developments LLC, request to vacate and convert to eastment parts of Pittsburg Ave, parts of Military Ave and the north-south public alley all existing east of Livernois Ave and north of McGraw Ave.*

1333

To: Clerk's Office
From: The Department of Public Works
City Engineering Division
MapsandRecordsBureau@DetroitMI.Gov
(313) 224-3970

Petitioner:
Parkstone Development Partners
On behalf of Frontier Developments, LLC
28 W Adams Avenue, Suite 1300
Detroit, MI 48226
(313) 636-1518

On behalf of the above mentioned petitioner the Department of Public Works: City Engineering Division is submitting a petition request for the below mentioned action. The petitioner has received a project consultation from the Department of Public Works: City Engineering Division and has been advised the following:

Type of action recommended:

Petition to vacate and convert to easement parts of Pittsburg Avenue, parts of Military Avenue, and the north-south public alley all existing east of Livernois Avenue and north of McGraw Avenue.

Based on the scope of the project the following requirements have been outlined:

- No further requirements noted.

Sincerely,



Jered Dean
Manager II
Maps and Records Bureau



PARKSTONE
DEVELOPMENT PARTNERS

August 20, 2020

The Honorable City Council
ATTN: Office of the City Clerk
200 Coleman A. Young Municipal Center
Detroit, MI 48226

Dear Council Members:

On behalf of Frontier Developments, LLC, we would like to petition the City of Detroit for the conversion to easement of that portion of Pittsburg Avenue east of Livernois, that portion of Military Street north of McGraw, and the north-south alley located between Pittsburg, Military, McGraw, and Livernois. Please see the attached ALTA survey for reference.

The purpose of these closures is to allow for the consolidation of 6100 McGraw, 5625 Military, 5600 Livernois, 5640 Livernois, and 5650 Livernois into one large site that will be used in conjunction with their secured parking development at 6100 McGraw. The owner has a successful track record operating similar businesses in other locations in Detroit and is seeking to further meet the needs of the trucking industry within our city.

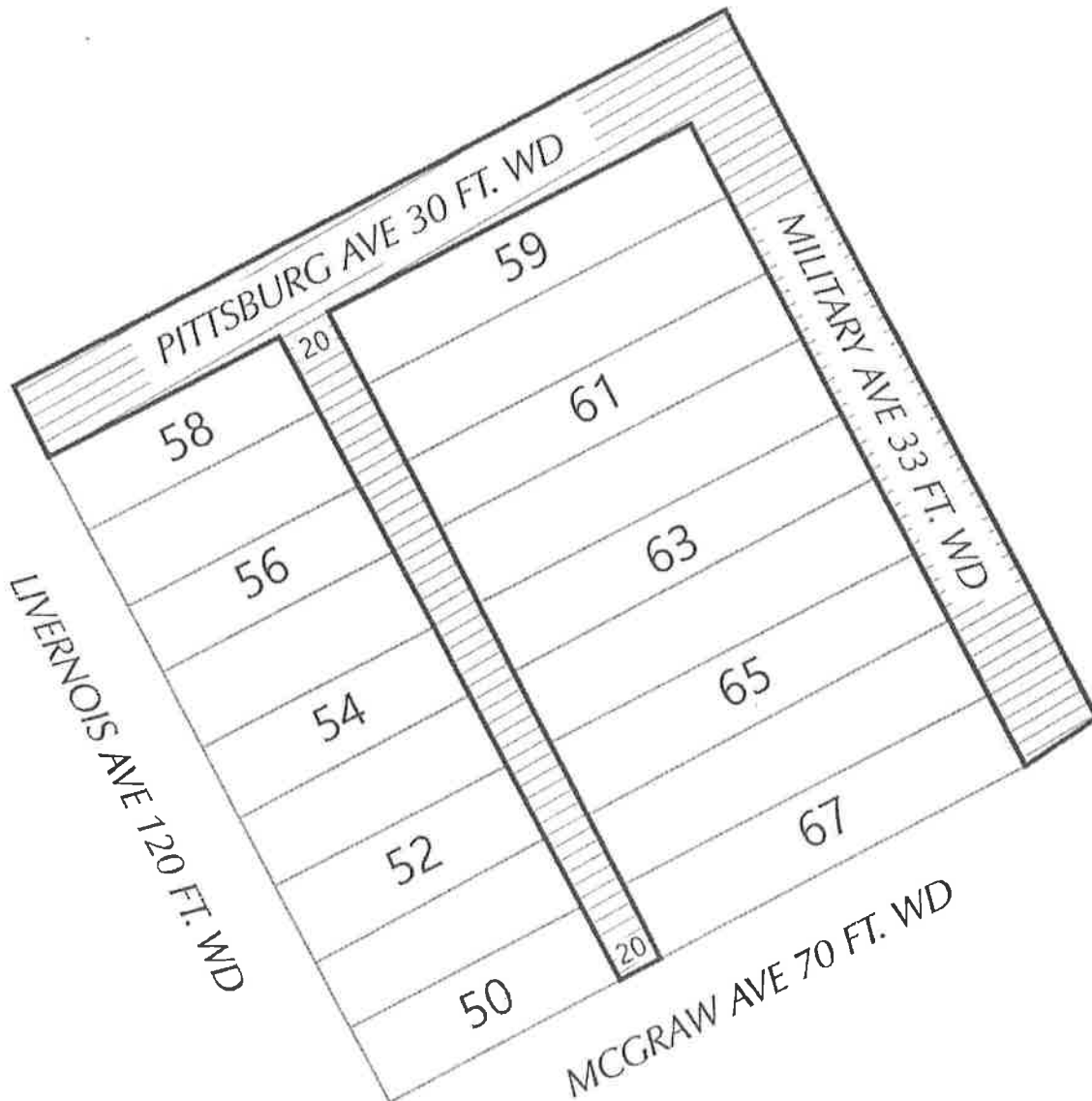
Thank you for your attention toward this matter. Please feel free to contact Parkstone Development Partners with any questions or concerns related to this request.

Respectfully,

Janelle Bulat
Project Manager, Parkstone Development Partners
313-636-1518
janelle@parkstonedevelopment.com

Scott McKenna
Member, Frontier Developments, LLC
s.mckenna@oasistruckingcenters.com

C/O Janelle Bulat
 Parkstone Development Partners,
 representing Frontier Developments, LLC.
 28 W Adams Ave., Suite 1300, Detroit MI 48226
 313-636-1518
 janelle@parkstonedevelopment.com



 - CONVERSION TO EASEMENT

(FOR OFFICE USE ONLY)

CARTO 14-15

B					
	A				
DESCRIPTION		DRWN	CHKD	APPD	DATE
REVISIONS					
DRAWN BY	KJ	CHECKED	KSM		
DATE	08-27-20	APPROVED BY	JD		

CONVERSION TO EASEMENT OF THE
 PUBLIC ALLEY AND ALONG WITH TWO
 STREETS IN THE BLOCK BOUND BY
 PITTSBURG AVE., MILITARY AVE.,
 MCGRAW AVE., AND LIVERNOIS AVE.

CITY OF DETROIT
 CITY ENGINEERING DIVISION
 SURVEY BUREAU

JOB NO. 01-01

DRWG. NO. X

2020-09-17

1333

1333 *Petition of Parkstone Development Partners / Frontier Developments LLC, request to vacate and convert to eastment parts of Pittsburg Ave, parts of Military Ave and the north-south public alley all existing east of Livernois Ave and north of McGraw Ave.*

REFERRED TO THE FOLLOWING DEPARTMENT(S)

PLANNING AND DEVELOPMENT DEPARTMENT DPW -
CITY ENGINEERING DIVISION