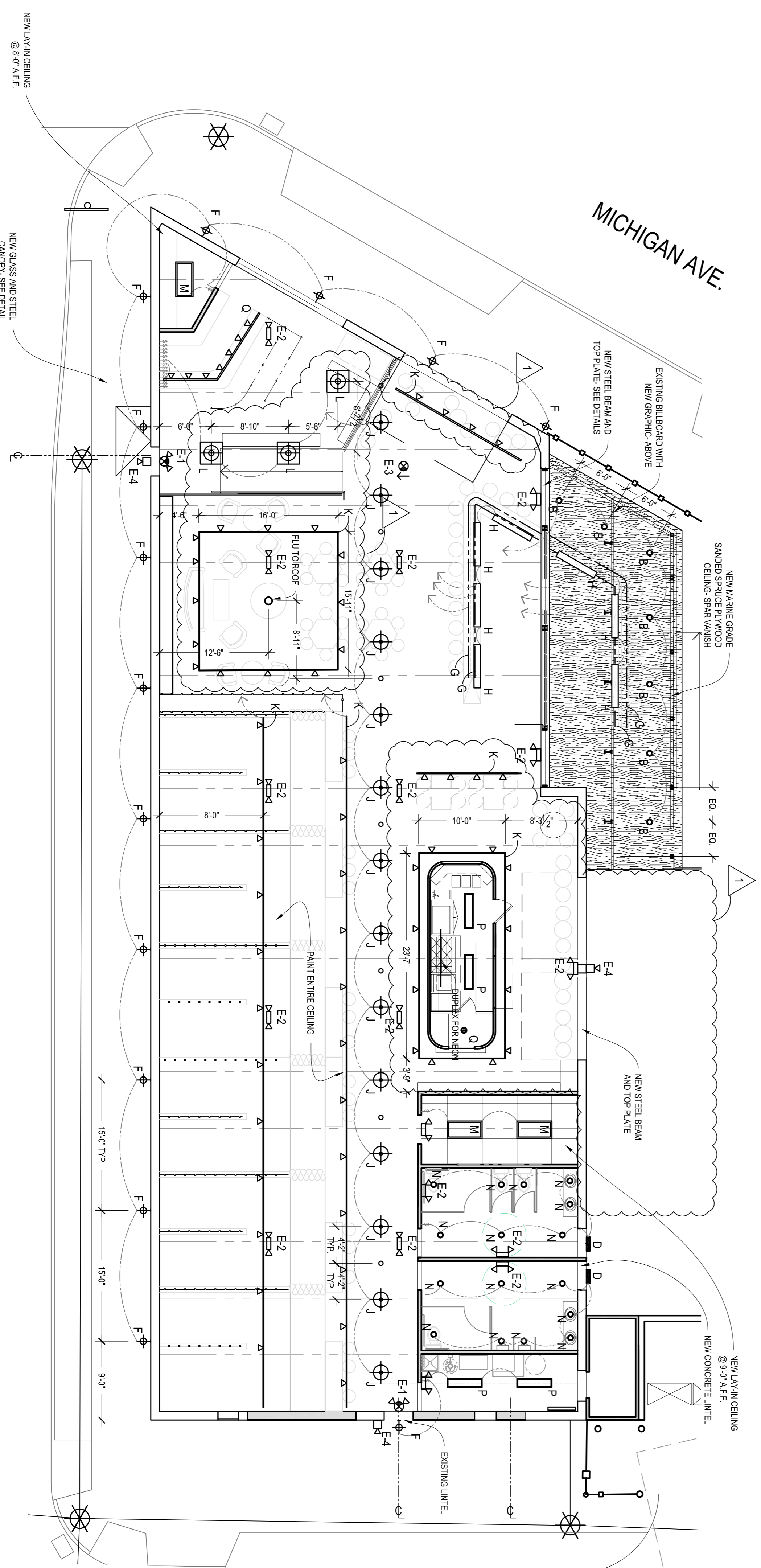


2 ENTRY AWNING DETAIL
N.T.S.

MARK	DESCRIPTION	LAMP
A	not used	
B	6" APERTURE RECESSED DOWNLIGHT - BLACK	120V LED PAR38- 8W 2700K NARROW FLOOD
C	CYLINDER DOWN LIGHT PENDANT BY OWNER	120V LED PAR38- 8W 2700K NARROW FLOOD
D	NEON BATHROOM SIGN BY OWNER- OVER DOOR	
E-1	EXIT SIGN AND EMERGENCY LIGHT COMBO WITH BATTERY BACK UP- RED LIGHT	
E-2	EMERGENCY LIGHT WITH BATTERY BACK UP	
E-3	DIRECTIONAL EXIT SIGN WITH BATTERY BACK UP- RED LIGHT	
E-4	EXTERIOR EMERGENCY LIGHT WITH BATTERY BACK UP	
F	SIGN LIGHT- OFF PARAPET ON BENT CONDUIT	120V LED A-LAMP 8W 2700K
G	LED STRIP LIGHT	12V LED 2700K
H	LIT HANGING LOUVER SHELVES WITH RECESSED LED STRIP LIGHT	12V LED 2700K
J	PENDANT LIGHT BY OWNER- JB ON BEAM	120V LED PAR38- 8W 2700K NARROW FLOOD
K	BLACK TRACK LIGHT	120V LED PAR38- 8W 2700K NARROW FLOOD
L	GLOBE LIGHT PENDANT WITH PLYWOOD SHADE- JB ON UNDERSIDE OF DECK	120V LED A-LAMP 10W 2700K
M	FLUORESCENT 2X4 LAY-IN	120V
N	CYLINDER METAL PENDANT- BLACK	120V LED PAR38- 8W 2700K NARROW FLOOD
P	HANGING INDUSTRIAL (2) FLUORESCENT SHADE	120V
Q	BLACK KENLESS SOCKET	120V LED PAR38- 8W 2700K SPOT



1 REFLECTED CEILING PLAN
Scale: 1/8" = 1'-0"

RON ANDROMAN
architects et al.
275 E. Frank St. Birmingham MI 48009
o) 248.723.5790 f) 248.723.5795

DETROIT AXE
NEW BAR AND AXE THROWING VENUE
1375 MICHIGAN AVE. DETROIT MI, 48226



Roman Bonislawski

Issue Date:	12/11/2018
Building Permit:	100302019
REV 1	
Sheet Title:	REFLECTED CEILING PLAN
Sheet Number:	A-102