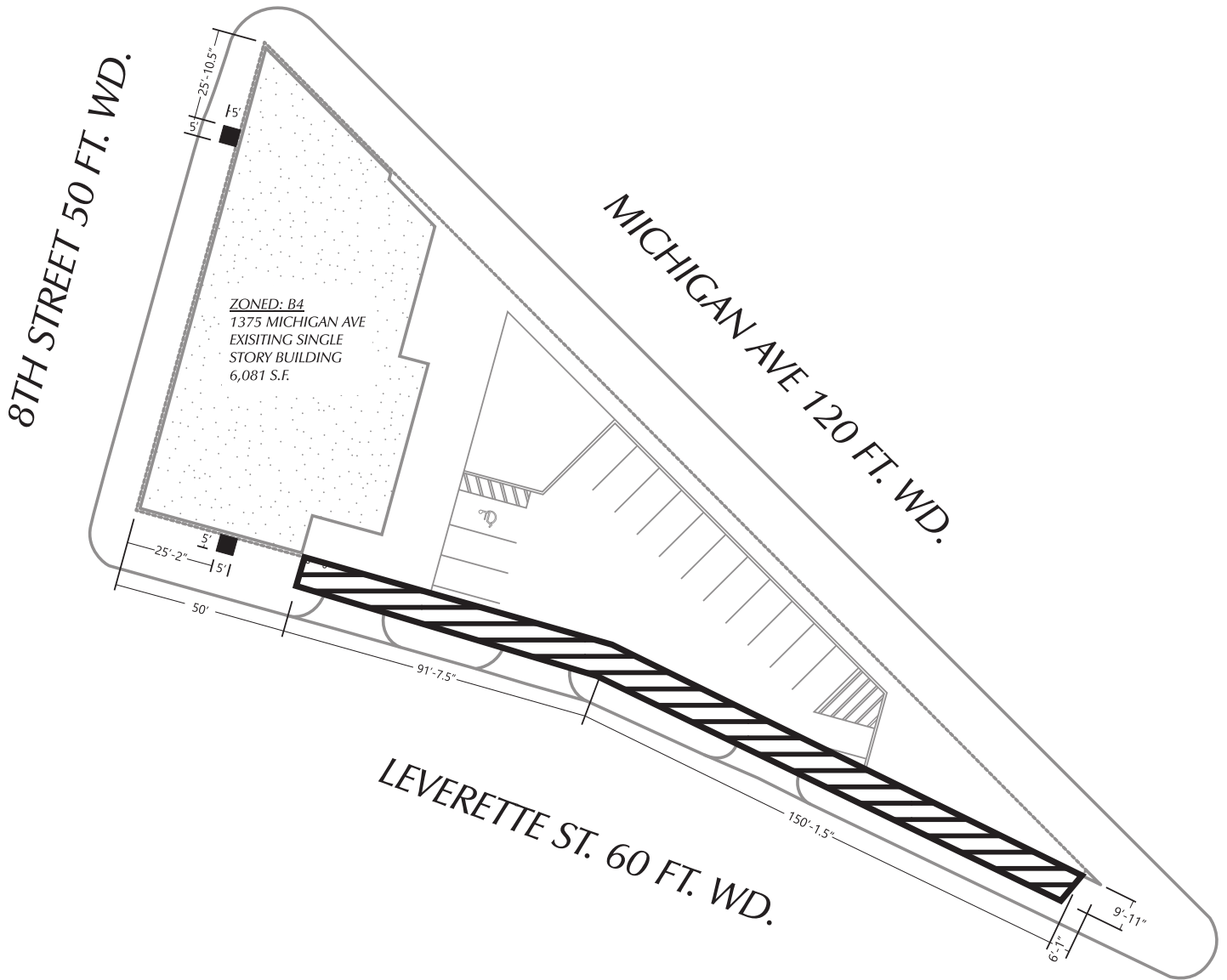


PETITION NO.1318  
 C/O JANELLE BULAT  
 PARKSTONE DEVELOPMENT PARTNERS  
 REPRESENTING CH CORKTOWN, LLC.  
 28 W ADAMS AVENUE, SUITE 1300  
 DETROIT, MI 48226



 PROPOSED AREA OF ENCROACHMENT  
 - FROM EXISTING FENCE LINE (EXISTING  
 PAVING AND NEW LANDSCAPING)

(FOR OFFICE USE ONLY)

CARTO 28 C

<b>B</b>					
	<b>A</b>				
DESCRIPTION		DRWN	CHKD	APPD	DATE
REVISIONS					
DRAWN BY		CHECKED			
DATE		APPROVED BY			
07-20-20		JD			

MULTIPLE ENCROACHMENTS AT 1331  
 MICHIGAN AVE., IN THE BLOCK  
 BOUND BY MICHIGAN AVE., LEVERETTE  
 AVE., AND 8TH STREET .

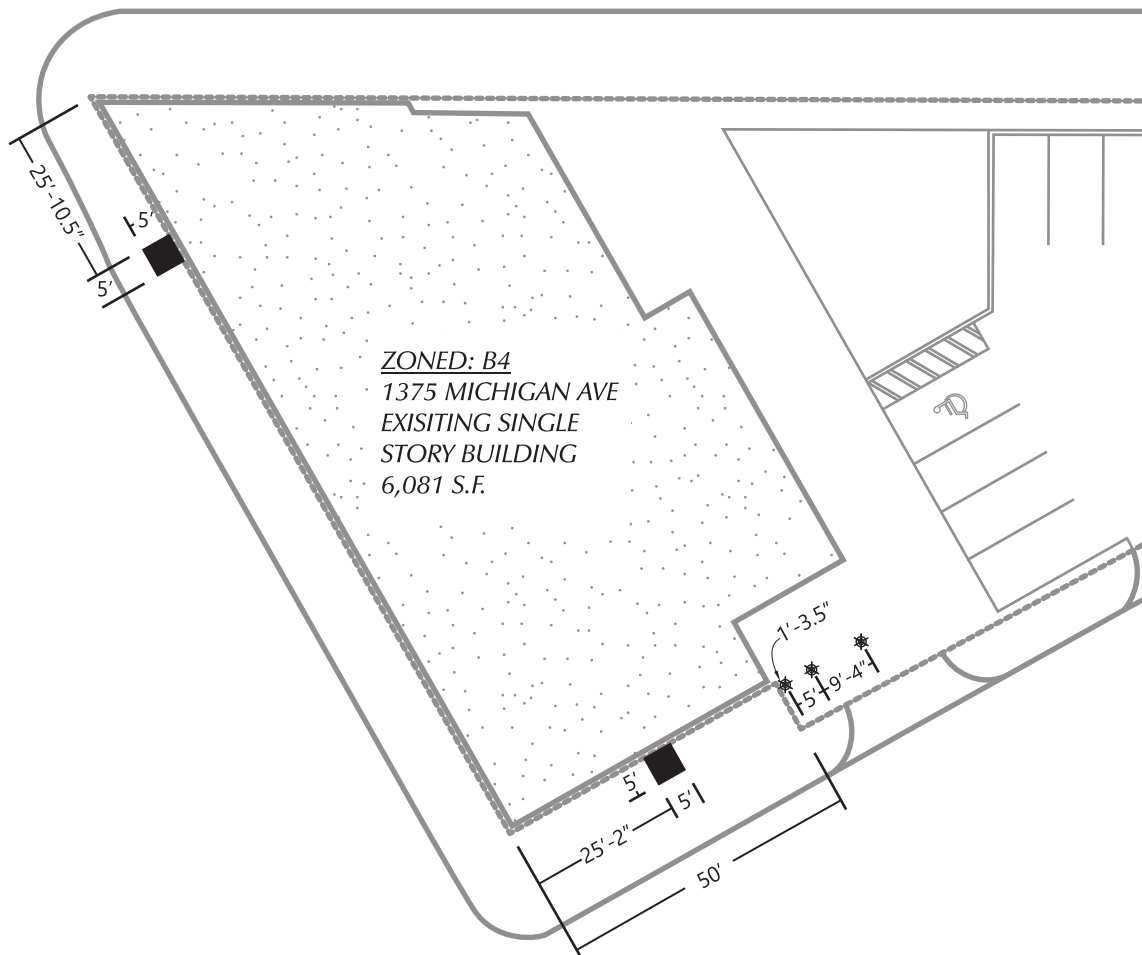
**CITY OF DETROIT**  
 CITY ENGINEERING DIVISION  
 SURVEY BUREAU

JOB NO. 01-01  
 DRWG. NO. X 1318

PETITION NO.1318  
 C/O JANELLE BULAT  
 PARKSTONE DEVELOPMENT PARTNERS  
 REPRESENTING CH CORKTOWN, LLC.  
 28 W ADAMS AVENUE, SUITE 1300  
 DETROIT, MI 48226



## MICHIGAN AVE 120 FT. WD.



PROPOSED PAINTED STEEL  
 - BOLLARDS WITH CONCRETE  
 FOOTINGS AT NEW  
 DUMPSTER ENCLOSURE



PROPOSED CONCRETE  
 - MASS FOOTING AT NEW  
 EXTERIOR WALL OPENING

(FOR OFFICE USE ONLY)

CARTO 28 C

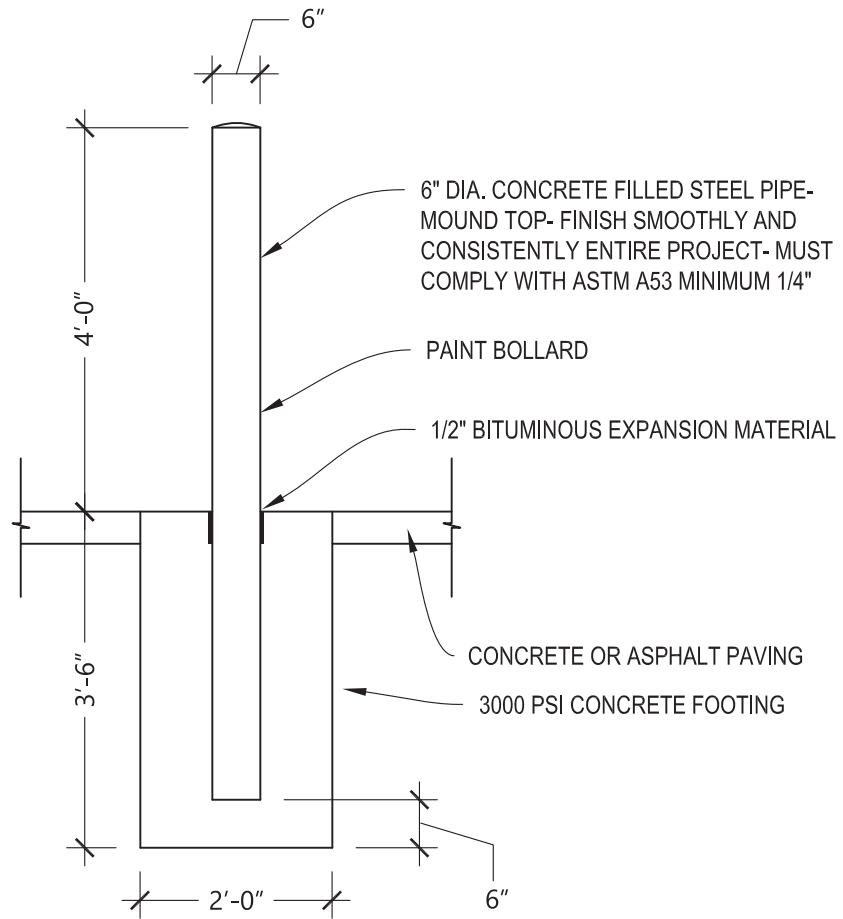
<b>B</b>					
<b>A</b>					
DESCRIPTION	DRWN	CHKD	APPD	DATE	
REVISIONS					
DRAWN BY	KJ		CHECKED		
DATE	07-20-20		APPROVED BY	JD	

MULTIPLE ENCROACHMENTS AT 1331  
 MICHIGAN AVE., IN THE BLOCK  
 BOUND BY MICHIGAN AVE., LEVERETTE  
 AVE., AND 8TH STREET.

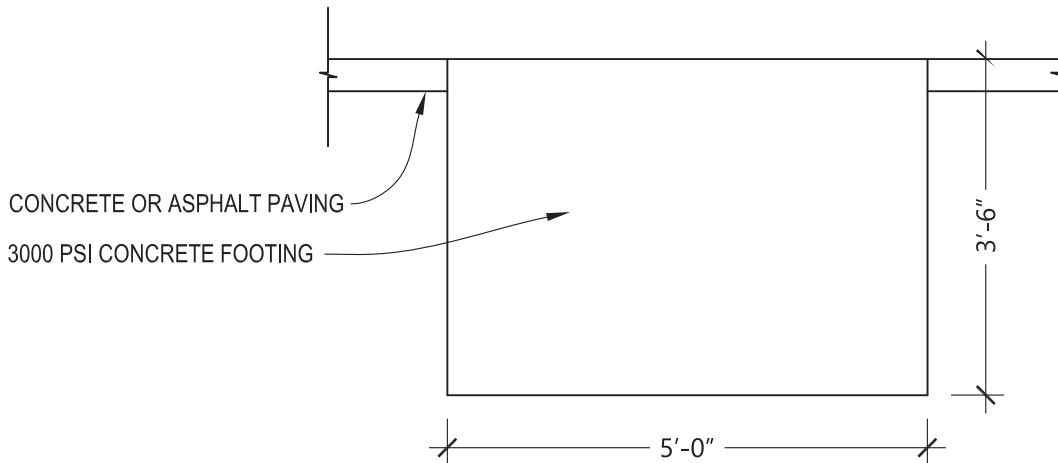
**CITY OF DETROIT**  
 CITY ENGINEERING DIVISION  
 SURVEY BUREAU

JOB NO. 01-02  
 DRWG. NO. X 1318

## BOLLARD FOOTING SECTION



## MASS FOOTING SECTION



(FOR OFFICE USE ONLY)

*CARTO 28 C*

<b>B</b>					
<b>A</b>					
DESCRIPTION	DRWN	CHKD	APPD	DATE	
REVISIONS					
DRAWN BY	CHECKED				
DATE	APPROVED BY				
07-20-20	JD				

*MULTIPLE ENCROACHMENTS AT 1331  
MICHIGAN AVE., IN THE BLOCK  
BOUND BY MICHIGAN AVE., LEVERETTE  
AVE., AND 8TH STREET.*

**CITY OF DETROIT**  
CITY ENGINEERING DIVISION  
SURVEY BUREAU

JOB NO. *01-03*

DRWG. NO. *X 1318*