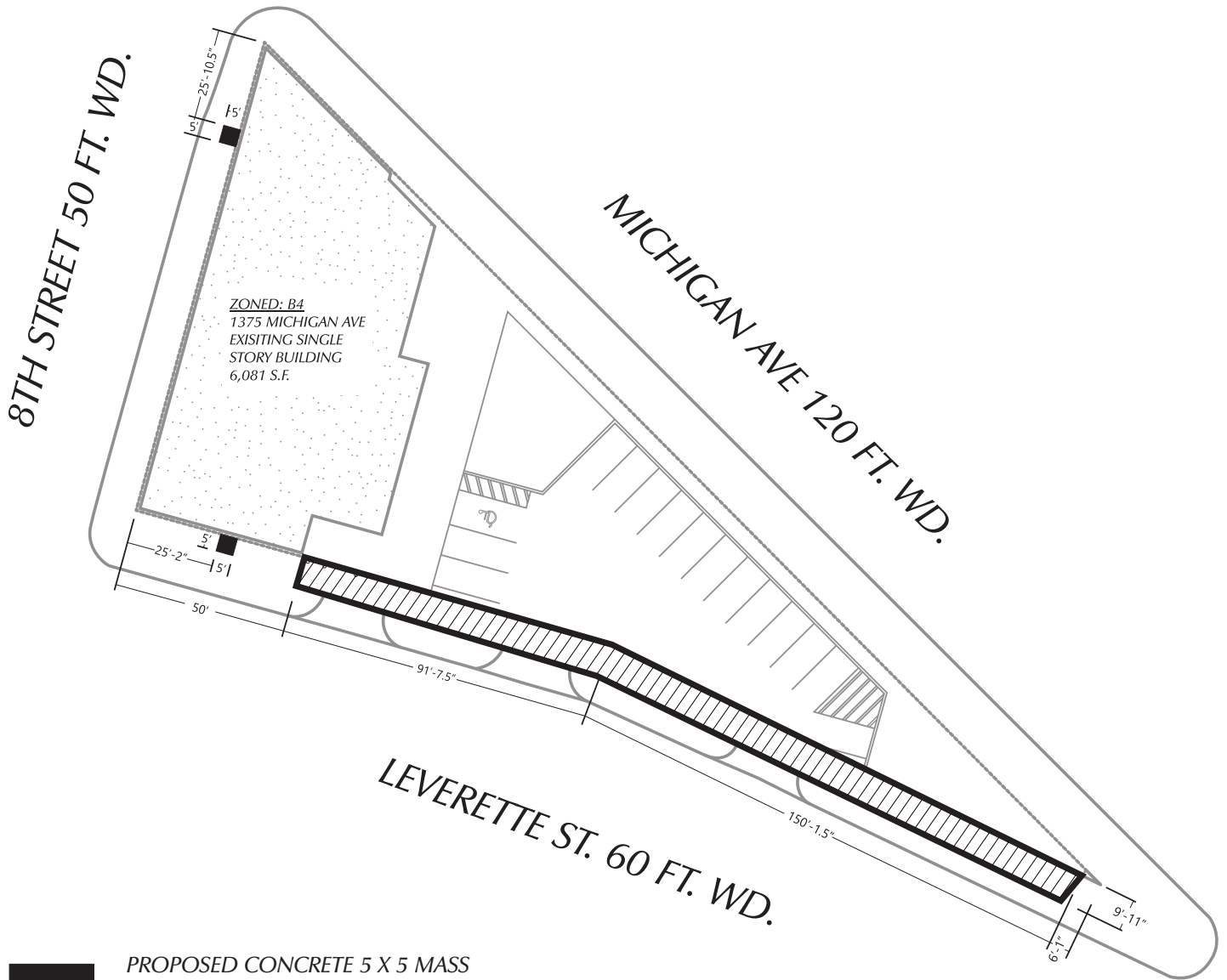


PETITION NO.1318
 C/O JANELLE BULAT
 PARKSTONE DEVELOPMENT PARTNERS
 REPRESENTING CH CORKTOWN, LLC.
 28 W ADAMS AVENUE, SUITE 1300
 DETROIT, MI 48226
 313-636-1518



- PROPOSED CONCRETE 5 X 5 MASS
 - FOOTING AT NEW EXTERIOR WALL
 OPENING
- PROPOSED AREA OF ENCROACHMENT
 - FROM EXISTING FENCE LINE (EXISTING
 PAVING AND NEW LANDSCAPING)

(FOR OFFICE USE ONLY)

CARTO 28 C

B				
A	ADDED AWNING DESCRIPTION	KJ	JD	10/5/2020
	DESCRIPTION	DRWN	CHKD	APPD
REVISIONS				
DRAWN BY	KJ	CHECKED		
DATE	07-20-20	APPROVED BY JD		

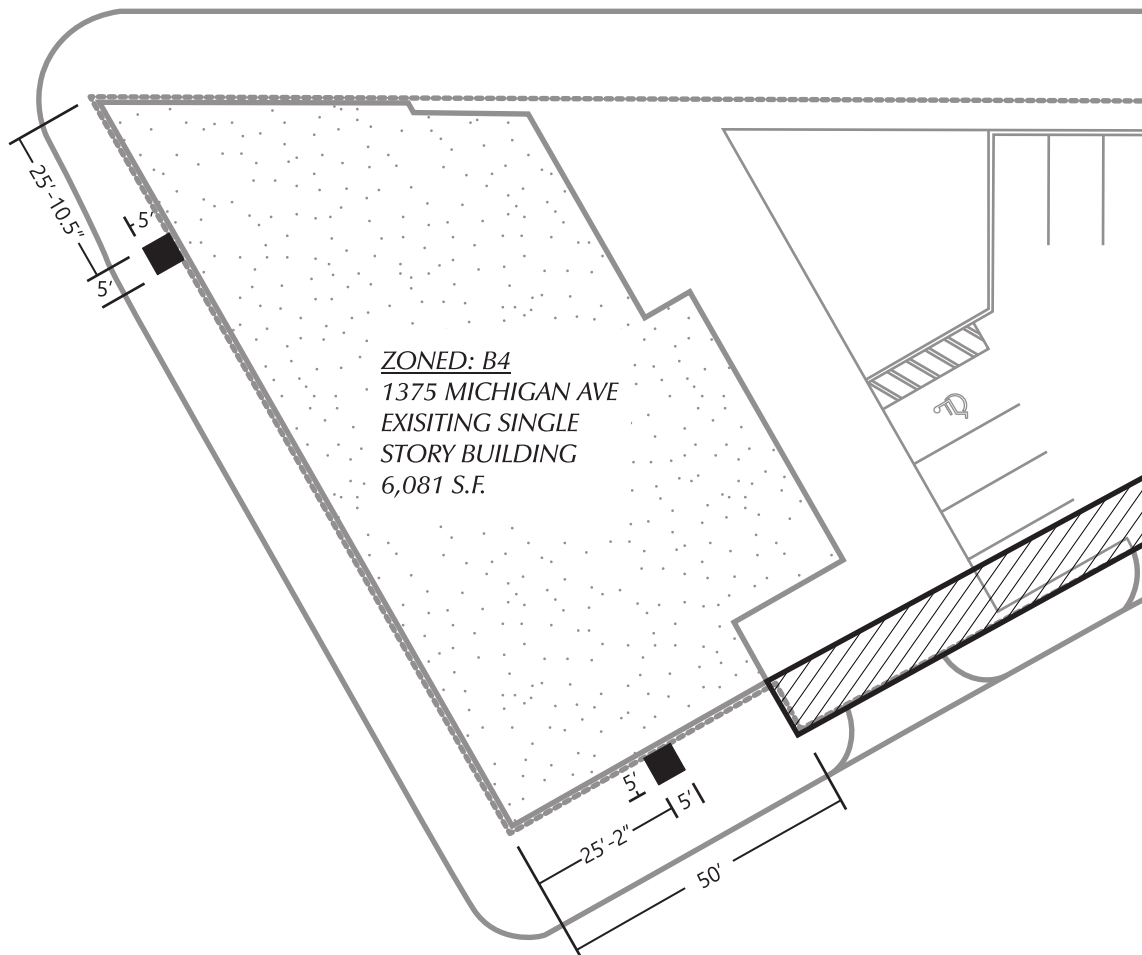
MULTIPLE ENCROACHMENTS AT 1331 MICHIGAN AVE., IN THE BLOCK BOUND BY MICHIGAN AVE., LEVERETTE AVE., AND 8TH STREET .

CITY OF DETROIT	
CITY ENGINEERING DIVISION	
SURVEY BUREAU	
JOB NO.	01-01
DRWG. NO.	X 1318

PETITION NO.1318
 C/O JANELLE BULAT
 PARKSTONE DEVELOPMENT PARTNERS
 REPRESENTING CH CORKTOWN, LLC.
 28 W ADAMS AVENUE, SUITE 1300
 DETROIT, MI 48226
 313-636-1518



MICHIGAN AVE 120 FT. WD.



ZONED: B4
 1375 MICHIGAN AVE
 EXISTING SINGLE
 STORY BUILDING
 6,081 S.F.

 PROPOSED CONCRETE 5 X 5 MASS
 - FOOTING AT NEW EXTERIOR WALL
 OPENING

 PROPOSED AREA OF ENCROACHMENT
 - FROM EXISTING FENCE LINE (EXISTING
 PAVING AND NEW LANDSCAPING)

(FOR OFFICE USE ONLY)

CARTO 28 C

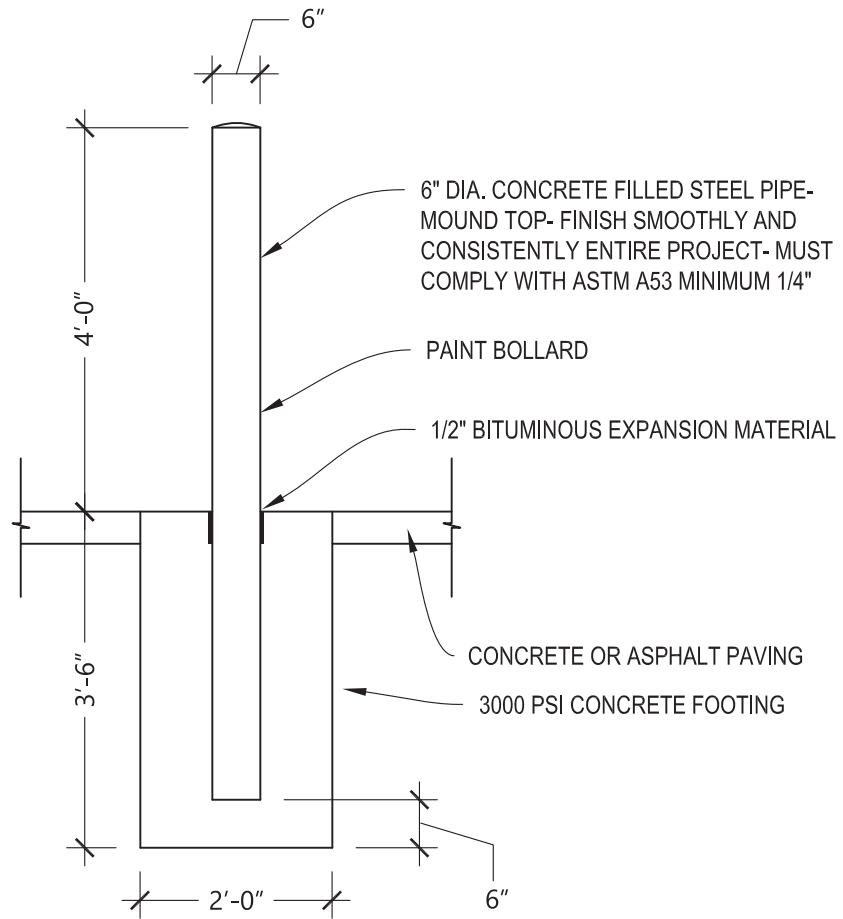
B					
A	ADDED AWNING DESCRIPTION	KJ	JD	10/5/2020	
	DESCRIPTION	DRWN	CHKD	APPD	DATE
REVISIONS					
DRAWN BY	KJ	CHECKED			
DATE	07-20-20	APPROVED BY JD			

MULTIPLE ENCROACHMENTS AT 1331
 MICHIGAN AVE., IN THE BLOCK
 BOUND BY MICHIGAN AVE., LEVERETTE
 AVE., AND 8TH STREET .

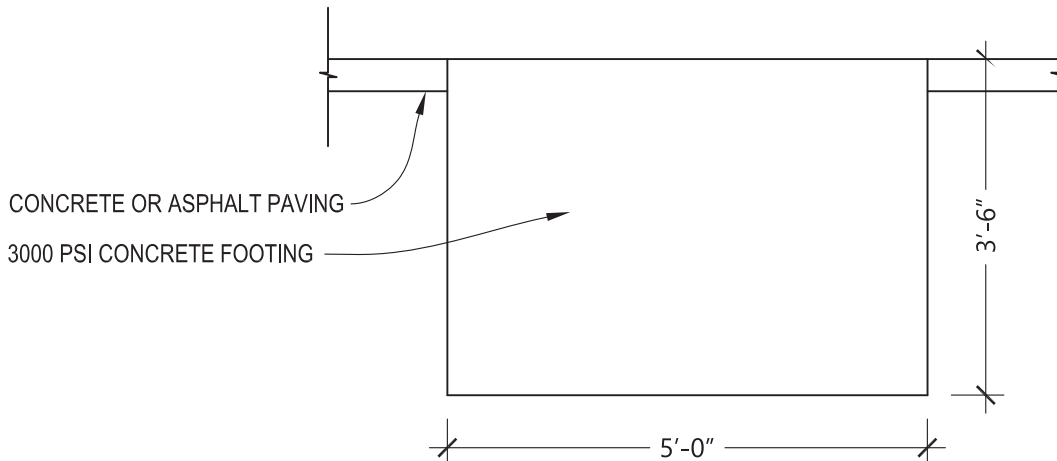
CITY OF DETROIT
 CITY ENGINEERING DIVISION
 SURVEY BUREAU

JOB NO. 01-02
 DRWG. NO. X 1318

BOLLARD FOOTING SECTION



MASS FOOTING SECTION



(FOR OFFICE USE ONLY)

CARTO 28 C

B					
A	ADDED AWNING DESCRIPTION	KJ	JD	10/5/2020	
	DESCRIPTION	DRWN	CHKD	APPD	DATE
REVISIONS					
DRAWN BY	KJ	CHECKED			
DATE	07-20-20	APPROVED BY JD			

**MULTIPLE ENCROACHMENTS AT 1331
MICHIGAN AVE., IN THE BLOCK
BOUND BY MICHIGAN AVE., LEVERETTE
AVE., AND 8TH STREET .**

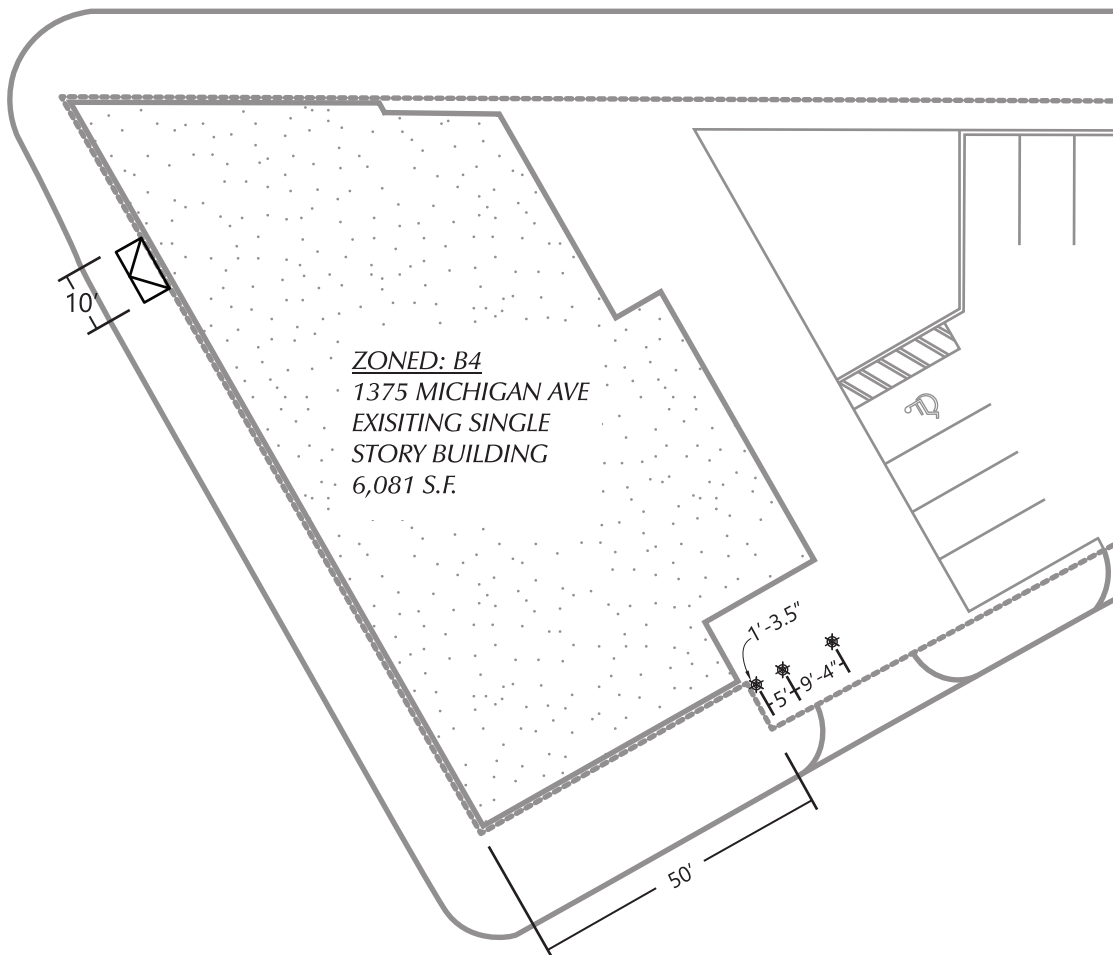
CITY OF DETROIT
CITY ENGINEERING DIVISION
SURVEY BUREAU

JOB NO. **01-03**
DRWG. NO. **X 1318**

PETITION NO.1318
 C/O JANELLE BULAT
 PARKSTONE DEVELOPMENT PARTNERS
 REPRESENTING CH CORKTOWN, LLC.
 28 W ADAMS AVENUE, SUITE 1300
 DETROIT, MI 48226
 313-636-1518



MICHIGAN AVE 120 FT. WD.



— ENTRY AWNING



— PROPOSED PAINTED STEEL BOLLARDS WITH CONCRETE FOOTINGS AT NEW DUMPSTER ENCLOSURE

(FOR OFFICE USE ONLY)

CARTO 28 C

B					
A	ADDED AWNING DESCRIPTION	KJ	JD	10/5/2020	
	DESCRIPTION	DRWN	CHKD	APPD	DATE
REVISIONS					
DRAWN BY	KJ	CHECKED			
DATE	07-20-20	APPROVED BY JD			

MULTIPLE ENCROACHMENTS AT 1331 MICHIGAN AVE., IN THE BLOCK BOUND BY MICHIGAN AVE., LEVERETTE AVE., AND 8TH STREET .

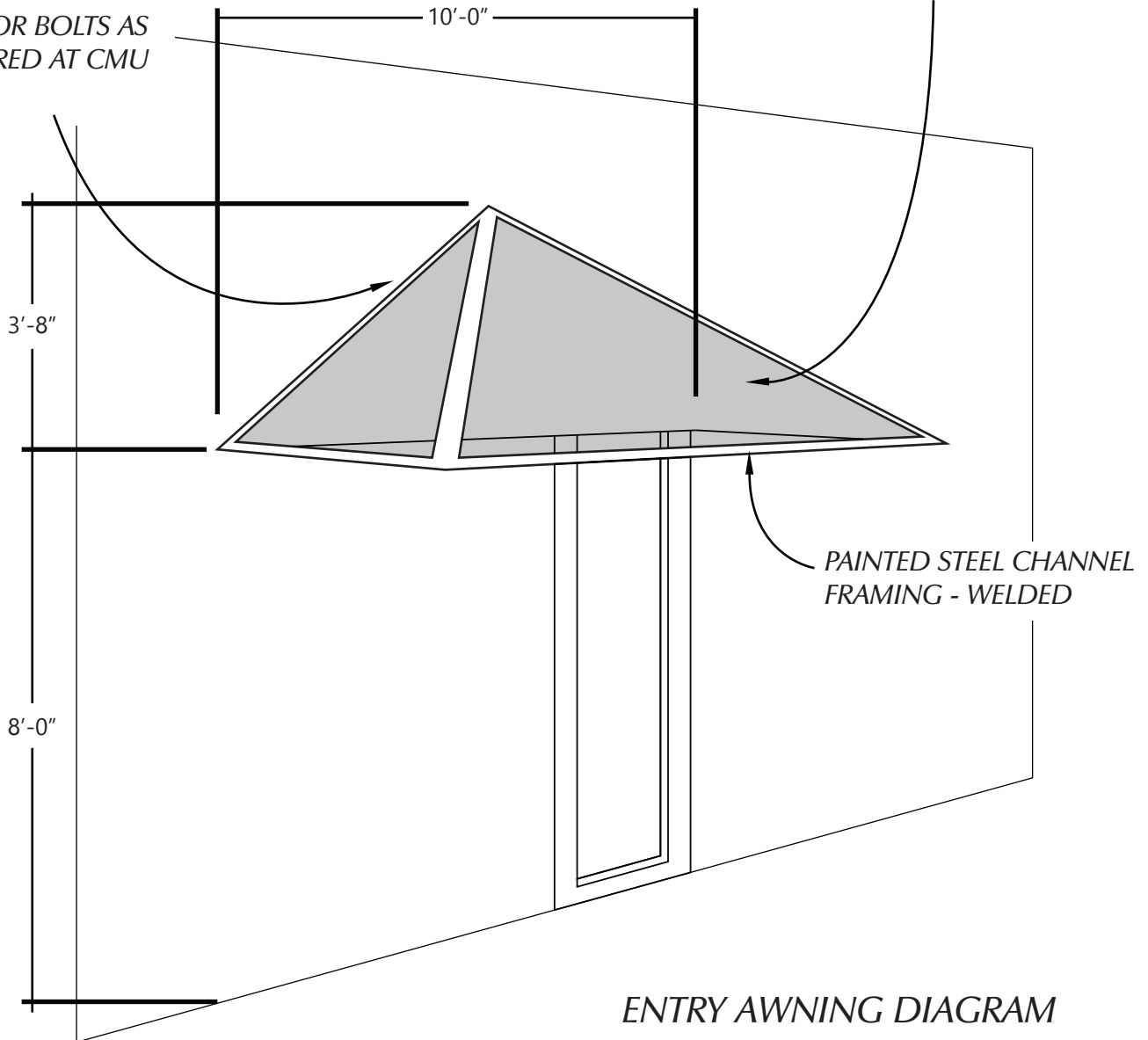
CITY OF DETROIT	
CITY ENGINEERING DIVISION	
SURVEY BUREAU	
JOB NO.	01-04
DRWG. NO.	X 1318

PETITION NO.1318
 C/O JANELLE BULAT
 PARKSTONE DEVELOPMENT PARTNERS
 REPRESENTING CH CORKTOWN, LLC.
 28 W ADAMS AVENUE, SUITE 1300
 DETROIT, MI 48226
 313-636-1518



RIBBED GLASS

ANCHOR BOLTS AS
 REQUIRED AT CMU
 WALL



PAINTED STEEL CHANNEL
 FRAMING - WELDED

ENTRY AWNING DIAGRAM

(FOR OFFICE USE ONLY)

CARTO 28 C

B					
A	ADDED AWNING DESCRIPTION	KJ	JD	10/5/2020	
	DESCRIPTION	DRWN	CHKD	APPD	DATE
REVISIONS					
DRAWN BY	KJ	CHECKED			
DATE	07-20-20	APPROVED BY JD			

MULTIPLE ENCROACHMENTS AT 1331
 MICHIGAN AVE., IN THE BLOCK
 BOUND BY MICHIGAN AVE., LEVERETTE
 AVE., AND 8TH STREET .

CITY OF DETROIT
 CITY ENGINEERING DIVISION
 SURVEY BUREAU

JOB NO. 01-05
 DRWG. NO. X 1318