





**PROPRIETARY INFORMATION**  
 THE INFORMATION CONTAINED IN THIS SET OF CONSTRUCTION DOCUMENTS IS PROPRIETARY BY NATURE. ANY USE OR DISCLOSURE OTHER THAN THAT WHICH RELATES TO CARRIER SERVICES IS STRICTLY PROHIBITED.

NC-MI-DTBUND-TMO  
 DE02029B  
 ALPHA CABINET  
 DETROIT, MI 48224



**APPLICANT**  
  
 3030 Warrenville Rd, Suite 340  
 Lisle, IL 60532  
 www.extenet.com

**ARCHITECT/ENGINEER**  
  
**VERITÀ**  
 TELECOMMUNICATIONS CORPORATION  
 Verità Telecommunications Corporation  
 47059 Five Mile Road  
 Plymouth, MI 48170

**REVISIONS:**

#	DATE	DESCRIPTION	INT.
3	11/30/2020	PERMITTING	JL
2	6/4/2020	PERMITTING	JL
1	3/13/2020	PERMITTING	JL

**PROFESSIONAL STAMP**  
  
**ISSUED FOR PERMITTING**

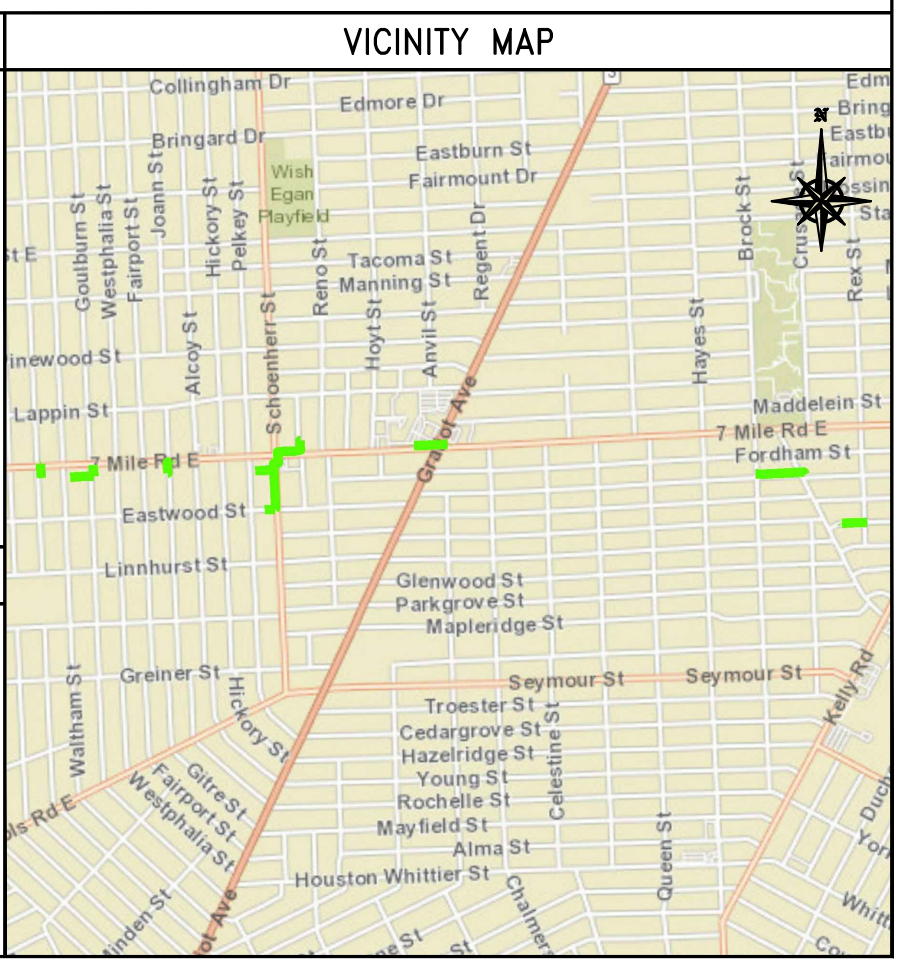
**PROJECT NAME:**  
 NC-MI-DTBUND-TMO  
 DE02029B  
 SE41 ALPHA CABINET

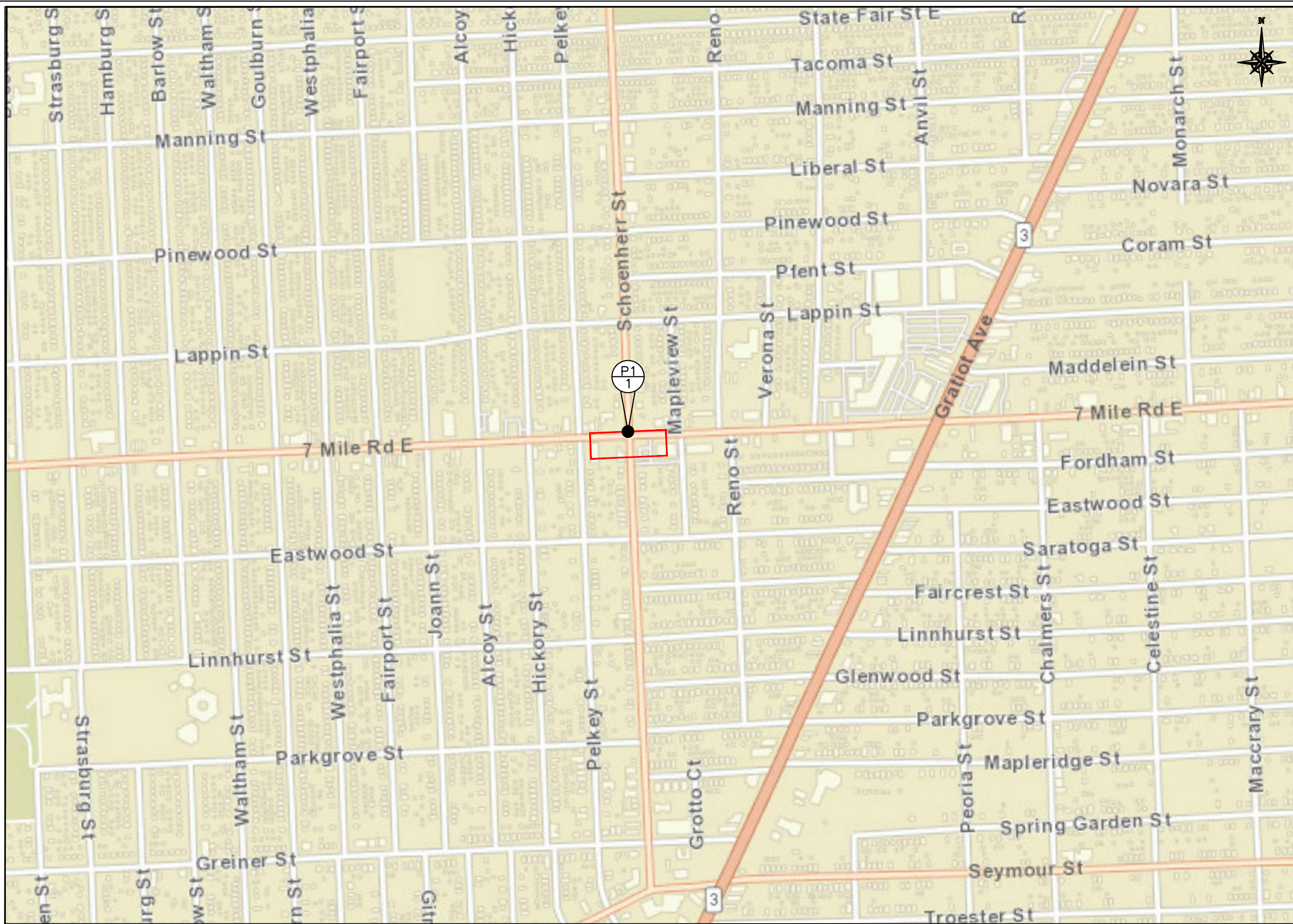
**PROJECT LOCATION:**  
 DETROIT MICHIGAN

**SHEET TITLE:**  
 COVER SHEET & PROJECT INFORMATION

**SHEET NUMBER:**  
 C1

EXTENET PROJECT TEAM	PERMITTING AGENCIES	SHEET INDEX
<b>APPLICANT:</b> EXTENET SYSTEMS, INC. 3030 WARRENVILLE ROAD SUITE 340 LISLE, IL 60532 PHONE: (630) 505-3800 FAX: (630) 577-1332  <b>ENGINEER/ARCHITECT:</b> VERITÀ TELECOMMUNICATIONS CORP. 47059 FIVE MILE ROAD PLYMOUTH, MI 48170 CONTACT: BENJAMIN REEVE PHONE: (740) 403-7012  <b>CONSTRUCTION MANAGER:</b> EXTENET SYSTEMS INC. CONTACT: BILL VORCE PHONE: (248) 882-4360  <b>PROJECT MANAGER:</b> EXTENET SYSTEMS INC. 3030 WARRENVILLE ROAD  LISLE, IL 60532 CONTACT: KEVIN TROPECK PHONE: (724) 312-5174  <b>MUNICIPAL AFFAIRS:</b> EXTENET SYSTEMS INC. CONTACT: KEITH DAVIDOW PHONE: (248) 252-2000	<b>UTILITY COMPANY:</b> DTE ENERGY CONTACT: REBECCA PICKLER PHONE: (313) 235-8426  <b>CITY OF DETROIT- ENGINEERING:</b> 2 WOODWARD AVE, SUITE 611 DETROIT, MI 48226 CONTACT: STELLA KULANGARA PHONE: (313) 224-3935 STEKUL@DETROITMI.GOV	C1 COVER SHEET & PROJECT INFORMATION C2 PROJECT KEY MAP L1 GENERAL NOTES ABBREVIATIONS & SYMBOLS P1 E 7 MILE RD & BARLOW ST D1 GROUND MOUNTED EQUIPMENT DETAILS D2 GROUND MOUNTED EQUIPMENT DETAILS D3 GROUND MOUNTED EQUIPMENT DETAILS D4 CONCRETE PAD DETAILS
		<b>PROJECT DESCRIPTION</b> THESE DRAWINGS DEPICT A PORTION OF A SMALL CELL SYSTEM TELECOMMUNICATIONS NETWORK, TO BE CONSTRUCTED, OWNED AND OPERATED BY EXTENET SYSTEMS, IN THE PUBLIC RIGHT OF WAY PURSUANT TO AUTHORITY GRANTED BY THE MICHIGAN METRO ACT.  THE MAIN COMPONENTS OF THIS INSTALLATION ARE: THE INSTALLATION OF ONE (1) ALPHA SE-41 ELECTRICAL CABINET, ASSOCIATED ELECTRICAL COMPONENTS, AND MOUNTING EQUIPMENT AS REQUIRED.






PROJECT KEY MAP


SCALE  
NTS 1

APPLICANT



3030 Warrenville Rd, Suite 340  
Lisle, IL 60532  
www.extenet.com

ARCHITECT/ENGINEER



**Verità**  
TELECOMMUNICATIONS CORPORATION  
Verità Telecommunications Corporation  
47059 Five Mile Road  
Plymouth, MI 48170

REVISIONS:

#	DATE	DESCRIPTION	INT.
3	11/30/2020	PERMITTING	JL
2	6/4/2020	PERMITTING	JL
1	3/13/2020	PERMITTING	JL

PROFESSIONAL STAMP

**ISSUED FOR PERMITTING**

PROJECT NAME:  
**NC-MI-DTBUND-TMO  
DE02029B  
SE41 ALPHA CABINET**

PROJECT LOCATION:  
**DETROIT  
MICHIGAN**

SHEET TITLE:  
**PROJECT KEY MAP**

SHEET NUMBER:  
**C2**

GENERAL NOTES

- 1. THE CONTRACTOR SHALL BE RESPONSIBLE FOR SURVEY MONUMENTS AND/OR VERTICAL CONTROL BENCHMARKS WHICH ARE DISTURBED OR DESTROYED BY CONSTRUCTION.

SPECIAL NOTES

- 1. INDEMNIFICATION CLAUSE: THE CONTRACTOR AGREES AND SHALL ASSUME SOLE AND COMPLETE RESPONSIBILITY OF THE JOB SITE CONDITIONS DURING THE COURSE OF CONSTRUCTION OF THIS PROJECT.

EROSION AND SEDIMENT CONTROL NOTES

- TEMPORARY EROSION/SEDIMENT CONTROL PRIOR TO COMPLETION OF FINAL IMPROVEMENTS, SHALL BE PERFORMED BY THE CONTRACTOR OR QUALIFIED PERSON AS INDICATED BELOW.

ABBREVIATIONS

Table listing abbreviations for materials, equipment, and construction terms, such as AL (ALUMINUM), ANT (ANTENNA), and AMSL (ABOVE MEAN SEA LEVEL).

CODE COMPLIANCE

- ALL WORK AND MATERIALS SHALL BE PERFORMED AND INSTALLED IN ACCORDANCE WITH THE CURRENT EDITIONS OF THE FOLLOWING CODES AS ADOPTED BY THE LOCAL GOVERNING AUTHORITIES.



GENERAL NOTES

SCALE NTS 3

- ROW GROUND CONSTRUCTION NOTES: 1. 120V POWER REQUIRED FOR 2-WIRE SERVICE. 2. GC TO REMOVE/CLEAN ALL DEBRIS, NAILS, STAPLES, OR NON-USED VERTICALS OFF THE POLE.

Legend & Symbols table with 4 columns listing symbols for utilities like GAS, WATER, POWER, and various manholes and vaults.

ROW CONSTRUCTION GENERAL NOTES

SCALE NTS 2

LEGEND & SYMBOLS

SCALE NTS 1

APPLICANT



3030 Warrenville Rd, Suite 340 Lisle, IL 60532 www.extenet.com

ARCHITECT/ENGINEER



Verità Telecommunications Corporation 47059 Five Mile Road Plymouth, MI 48170

REVISIONS:

Table with 4 columns: #, DATE, DESCRIPTION, INT. showing revision 2 on 6/4/2020 for PERMITTING.

PROFESSIONAL STAMP

ISSUED FOR PERMITTING

PROJECT NAME:

NC-MI-DTBUND-TMO DE0209B SE41 ALPHA CABINET

PROJECT LOCATION:

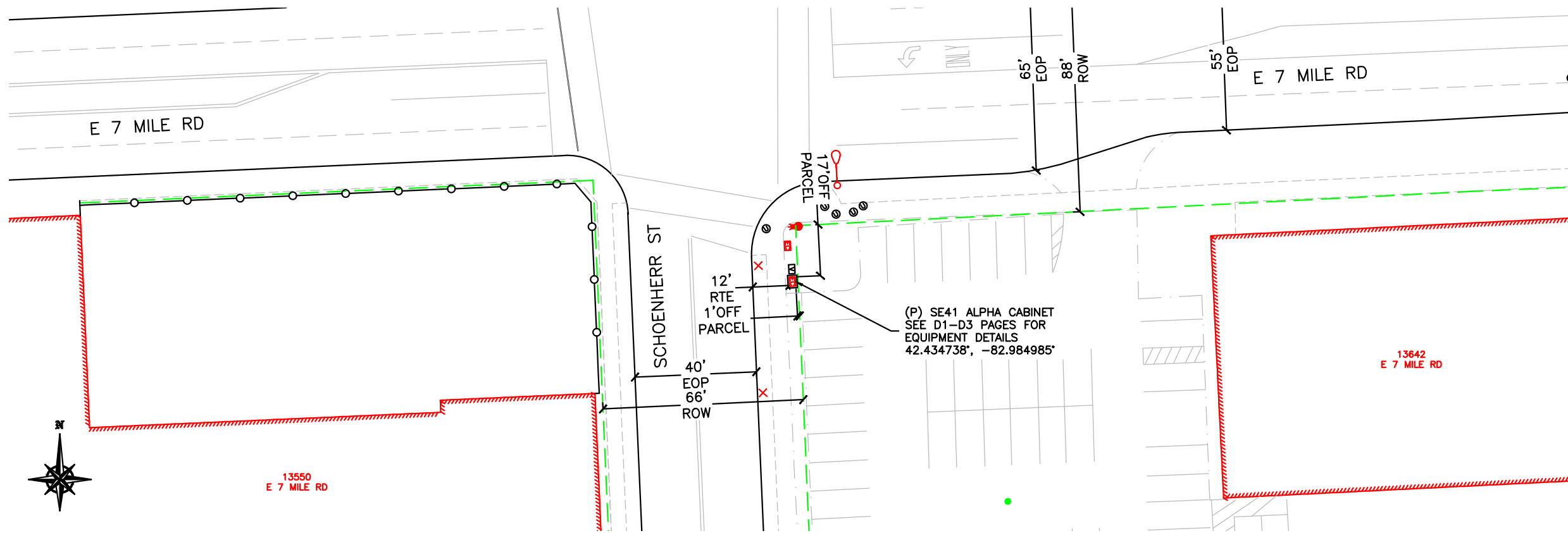
DETROIT MICHIGAN

SHEET TITLE:

GENERAL NOTES ABBREVIATIONS & SYMBOLS

SHEET NUMBER:

L1



ROUTE PLAN

0' 10' 20' 40' B-SCALE 1"=40'-0" D-SCALE 1"=20'-0" 1

APPLICANT

**extenet** YOUR NETWORK. EVERYWHERE.  
SYSTEMS  
3030 Warrenville Rd, Suite 340  
Lisle, IL 60532  
www.extenet.com

ARCHITECT/ENGINEER

**VERITÀ**  
TELECOMMUNICATIONS CORPORATION  
Verità Telecommunications Corporation  
47059 Five Mile Road  
Plymouth, MI 48170

REVISIONS:

#	DATE	DESCRIPTION	INT.
2	6/4/2020	PERMITTING	JL
1	3/13/2020	PERMITTING	JL
#	DATE	DESCRIPTION	INT.

PROFESSIONAL STAMP

ISSUED FOR PERMITTING

PROJECT NAME:

NC-MI-DTBUND-TMO  
DE02029B  
SE41 ALPHA CABINET

PROJECT LOCATION:

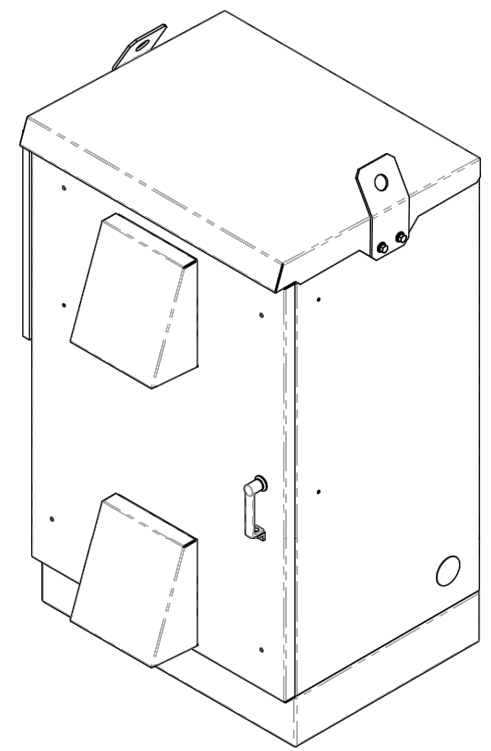
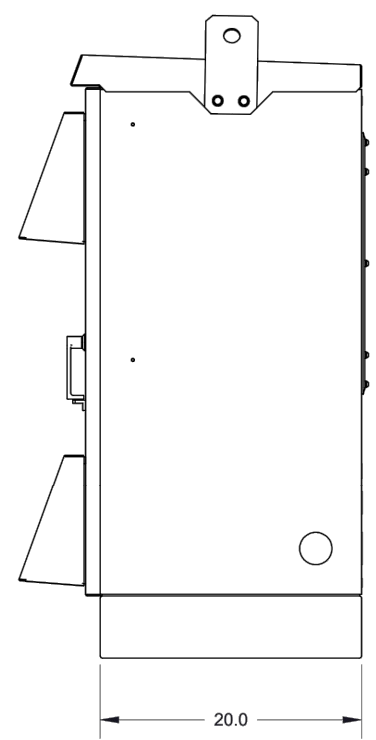
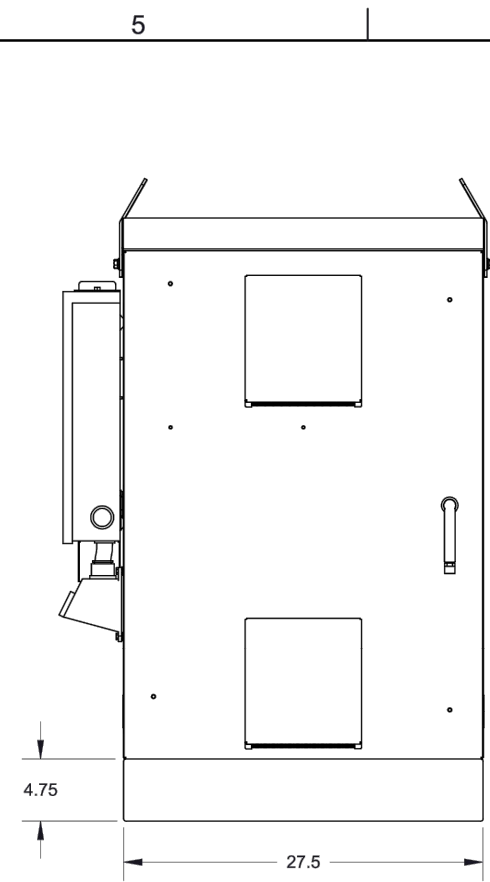
DETROIT  
MICHIGAN

SHEET TITLE:

ROUTE PLAN  
7 MILE RD  
& BARLOW ST

SHEET NUMBER:

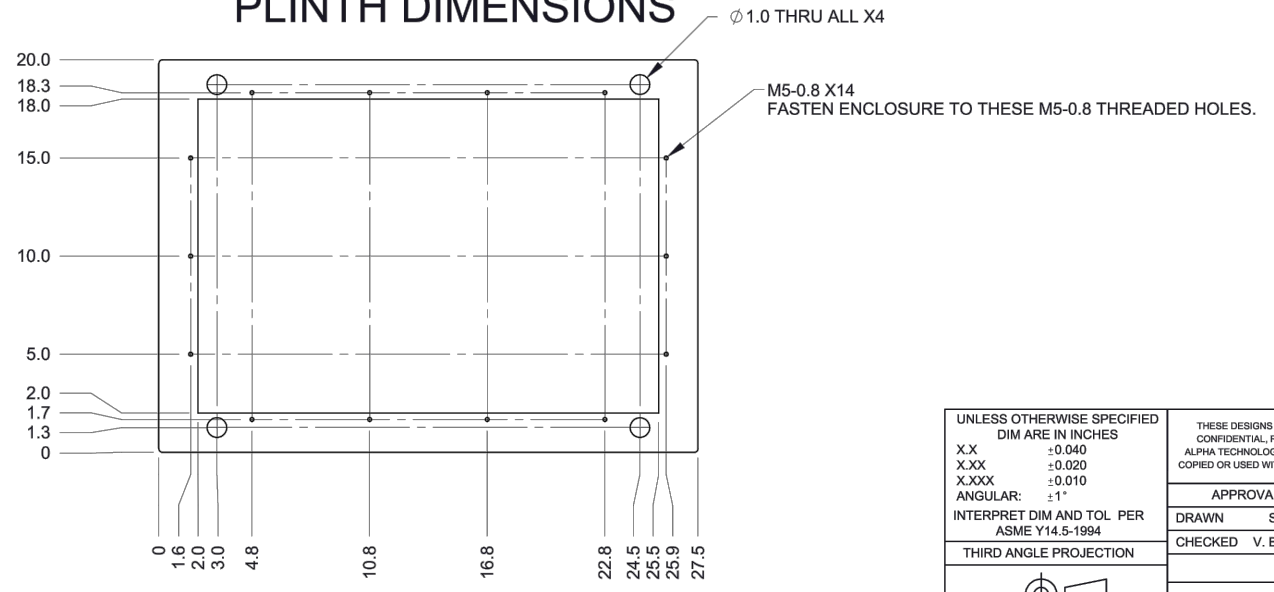
P1



DO NOT SCALE DRAWING  
**PLINTH OPTION**

REVISIONS					
LTR	DESCRIPTION	BP	DWN	DATE	CHK

**PLINTH DIMENSIONS**



NOTE:  
 1. REMOVAL OF THE BATTERY TRAYS (IF INSTALLED) MAY BE REQUIRED TO MOUNT THE ENCLOSURE TO THE PLINTH.  
 2. FASTEN ENCLOSURE TO PLINTH WITH PROVIDED M5 SCREWS.

UNLESS OTHERWISE SPECIFIED DIM ARE IN INCHES		THESE DESIGNS AND SPECIFICATIONS ARE CONFIDENTIAL, REMAIN THE PROPERTY OF ALPHA TECHNOLOGIES LTD, AND SHALL NOT BE COPIED OR USED WITHOUT ITS WRITTEN CONSENT			
X.X	±0.040	APPROVALS	DATE		
X.XX	±0.020	DRAWN S. BIENKO	FEB-01-13	SIZE DWG NO. 0290002-06	REV B
X.XXX	±0.010	CHECKED V. BEAUVAIS	FEB-01-13	SCALE: 1:12	SHEET 5 OF 5
ANGULAR:	±1°	© ALPHA TECHNOLOGIES LTD			
INTERPRET DIM AND TOL PER ASME Y14.5-1994		THIRD ANGLE PROJECTION			

APPLICANT

3030 Warrenville Rd, Suite 340  
 Lisle, IL 60532  
 www.extenet.com

ARCHITECT/ENGINEER

Verità Telecommunications Corporation  
 47059 Five Mile Road  
 Plymouth, MI 48170

REVISIONS:

#	DATE	DESCRIPTION	INT.
3	11/30/2020	PERMITTING	JL
2	6/4/2020	PERMITTING	JL
1	3/13/2020	PERMITTING	JL

PROFESSIONAL STAMP

**ISSUED FOR PERMITTING**

PROJECT NAME:  
**DE02029B  
 SE41 ALPHA CABINET**

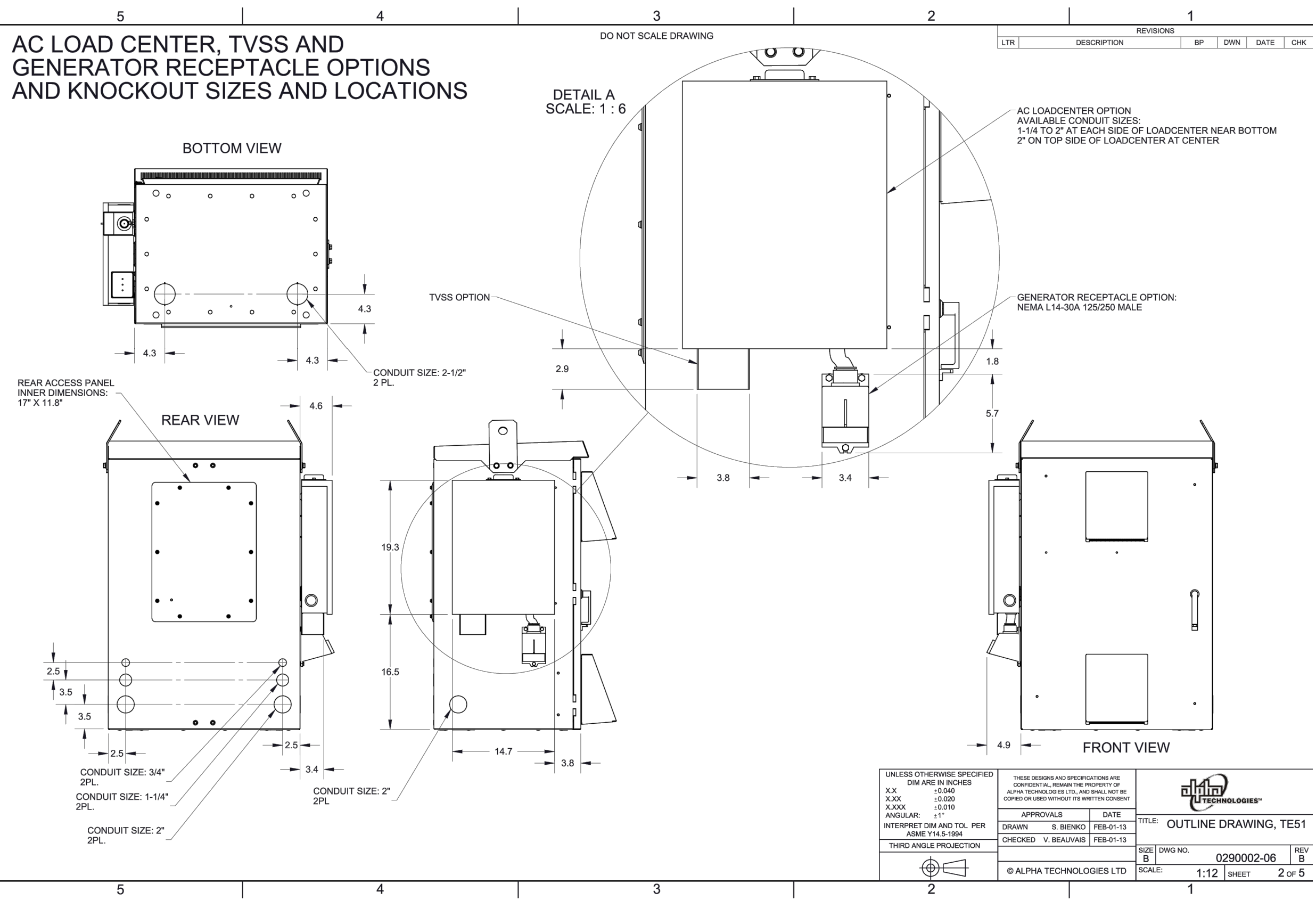
PROJECT LOCATION:  
**DETROIT MICHIGAN**

SHEET TITLE:

**ROUTE PLAN  
 E MONTCALM ST  
 & BRUSH ST**

SHEET NUMBER:  
**D1**

# AC LOAD CENTER, TVSS AND GENERATOR RECEPTACLE OPTIONS AND KNOCKOUT SIZES AND LOCATIONS



**APPLICANT**

**extenet** YOUR NETWORK. EVERYWHERE.  
SYSTEMS

3030 Warrenville Rd, Suite 340  
Lisle, IL 60532  
www.extenet.com

**ARCHITECT/ENGINEER**

**VERITÀ**  
TELECOMMUNICATIONS CORPORATION  
Verità Telecommunications Corporation  
47059 Five Mile Road  
Plymouth, MI 48170

**REVISIONS:**

#	DATE	DESCRIPTION	INT.
3	11/30/2020	PERMITTING	JL
2	6/4/2020	PERMITTING	JL
1	3/13/2020	PERMITTING	JL

**PROFESSIONAL STAMP**

**ISSUED FOR PERMITTING**

**PROJECT NAME:**

**DE02029B**  
**SE41 ALPHA CABINET**

**PROJECT LOCATION:**

**DETROIT MICHIGAN**

**SHEET TITLE:**

**ROUTE PLAN E MONTCALM ST & BRUSH ST**

**SHEET NUMBER:**

**D2**

UNLESS OTHERWISE SPECIFIED DIM ARE IN INCHES

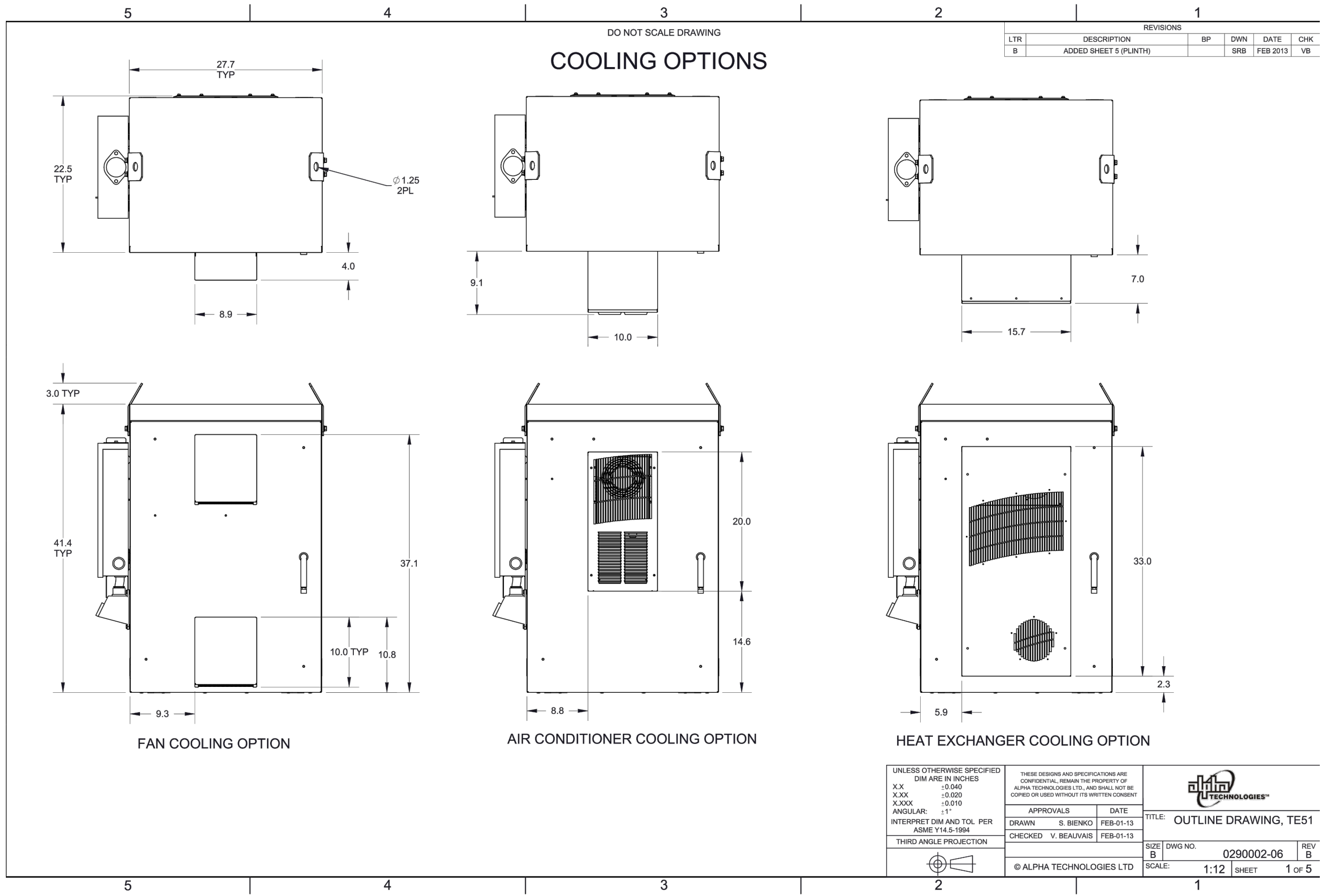
THESE DESIGNS AND SPECIFICATIONS ARE CONFIDENTIAL, REMAIN THE PROPERTY OF ALPHA TECHNOLOGIES LTD, AND SHALL NOT BE COPIED OR USED WITHOUT ITS WRITTEN CONSENT

APPROVALS	DATE
DRAWN S. BIENKO	FEB-01-13
CHECKED V. BEAUVAIS	FEB-01-13

TITLE: **OUTLINE DRAWING, TE51**

SIZE B	DWG NO. 0290002-06	REV B
SCALE: 1:12	SHEET 2 OF 5	

© ALPHA TECHNOLOGIES LTD



**COOLING OPTIONS**

DO NOT SCALE DRAWING

REVISIONS					
LTR	DESCRIPTION	BP	DWN	DATE	CHK
B	ADDED SHEET 5 (PLINTH)		SRB	FEB 2013	VB

FAN COOLING OPTION

AIR CONDITIONER COOLING OPTION

HEAT EXCHANGER COOLING OPTION

UNLESS OTHERWISE SPECIFIED DIM ARE IN INCHES X.X ±0.040 X.XX ±0.020 X.XXX ±0.010 ANGULAR: ±1° INTERPRET DIM AND TOL PER ASME Y14.5-1994	THIRD ANGLE PROJECTION	THESE DESIGNS AND SPECIFICATIONS ARE CONFIDENTIAL, REMAIN THE PROPERTY OF ALPHA TECHNOLOGIES LTD, AND SHALL NOT BE COPIED OR USED WITHOUT ITS WRITTEN CONSENT	APPROVALS DRAWN S. BIENKO CHECKED V. BEAUVAIS	DATE FEB-01-13 FEB-01-13	TITLE: OUTLINE DRAWING, TE51
© ALPHA TECHNOLOGIES LTD	SIZE B	DWG NO. 0290002-06	REV B	SCALE: 1:12	SHEET 1 OF 5

APPLICANT

3030 Warrenville Rd, Suite 340  
Lisle, IL 60532  
www.extenet.com

ARCHITECT/ENGINEER

Verità Telecommunications Corporation  
47059 Five Mile Road  
Plymouth, MI 48170

REVISIONS:

#	DATE	DESCRIPTION	INT.
3	11/30/2020	PERMITTING	JL
2	6/4/2020	PERMITTING	JL
1	3/13/2020	PERMITTING	JL

PROFESSIONAL STAMP

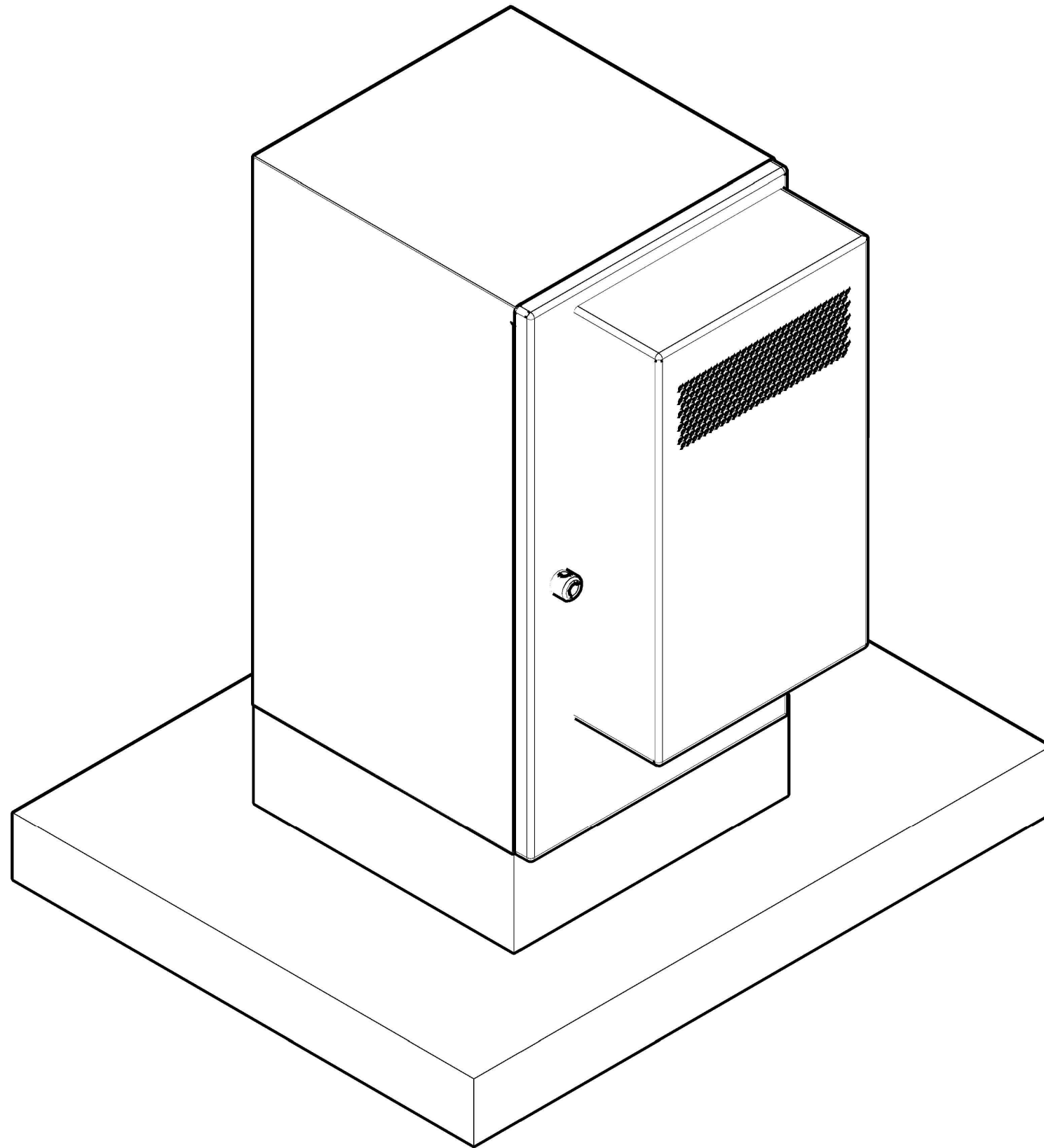
ISSUED FOR PERMITTING

PROJECT NAME:  
**DE02029B  
SE41 ALPHA CABINET**

PROJECT LOCATION:  
**DETROIT  
MICHIGAN**

SHEET TITLE:  
**ROUTE PLAN  
E MONTCALM ST  
& BRUSH ST**

SHEET NUMBER:  
**D3**



32" x 40" x 4" CONCRETE PAD  
6" WIDER AROUND THE ENTIRE PLINTH

CONCRETE PAD

B-SCALE 3/4"=1'-0"  
D-SCALE 1 1/2"=1'-0"

1

APPLICANT

**extenet** YOUR NETWORK. EVERYWHERE.  
SYSTEMS  
3030 Warrenville Rd, Suite 340  
Lisle, IL 60532  
www.extenet.com

ARCHITECT/ENGINEER

**VERITÀ**  
TELECOMMUNICATIONS CORPORATION  
Verità Telecommunications Corporation  
47059 Five Mile Road  
Plymouth, MI 48170

REVISIONS:

#	DATE	DESCRIPTION	INT.
3	11/30/2020	PERMITTING	JL
2	6/4/2020	PERMITTING	JL
1	3/13/2020	PERMITTING	JL

PROFESSIONAL STAMP

ISSUED  
FOR  
PERMITTING

PROJECT NAME:

**DE02029B**  
**SE41 ALPHA CABINET**

PROJECT LOCATION:

**DETROIT**  
**MICHIGAN**

SHEET TITLE:

**CONCRETE PAD DETAILS**

SHEET NUMBER:

**D4**