




PROPRIETARY INFORMATION
 THE INFORMATION CONTAINED IN THIS SET OF CONSTRUCTION DOCUMENTS IS PROPRIETARY BY NATURE. ANY USE OR DISCLOSURE OTHER THAN THAT WHICH RELATES TO CARRIER SERVICES IS STRICTLY PROHIBITED.

NC-MI-DTBUND-TMO
 DEYH006A
 ALPHA CABINET (B)
 DETROIT, MI



APPLICANT

 3030 Warrenville Rd, Suite 340
 Lisle, IL 60532
 www.extenet.com

ARCHITECT/ENGINEER

VERITA
 TELECOMMUNICATIONS CORPORATION
 Verita Telecommunications Corporation
 47059 Five Mile Road
 Plymouth, MI 48170

REVISIONS:

#	DATE	DESCRIPTION	INT.
2	6/4/2020	PERMITTING	JL
1	3/12/2020	PERMITTING	JL

PROFESSIONAL STAMP

ISSUED FOR PERMITTING

PROJECT NAME:
 NC-MI-DTBUND-TMO
 DEYH006A

PROJECT LOCATION:
 20 W ELIZABETH ST
 DETROIT, MI 48201

SHEET TITLE:
 COVER SHEET &
 PROJECT INFORMATION

SHEET NUMBER:
 C1

EXTENET PROJECT TEAM

APPLICANT:
 EXTENET SYSTEMS, INC.
 3030 WARRENVILLE ROAD
 SUITE 340
 LISLE, IL 60532
 PHONE: (630) 505-3800
 FAX: (630) 577-1332

ENGINEER/ARCHITECT:
 VERITA TELECOMMUNICATIONS CORP.
 47059 FIVE MILE ROAD
 PLYMOUTH, MI 48170
 CONTACT: BENJAMIN REEVE
 PHONE: (740) 403-7012

CONSTRUCTION MANAGER:
 EXTENET SYSTEMS INC.
 CONTACT: BILL VORCE
 PHONE: (248) 882-4360

PROJECT MANAGER:
 EXTENET SYSTEMS INC.
 3030 WARRENVILLE ROAD
 SUITE 340
 LISLE, IL 60532
 CONTACT: KEVIN TROPECK
 PHONE: (724) 312-5174

MUNICIPAL AFFAIRS:
 EXTENET SYSTEMS INC.
 CONTACT: KEITH DAVIDOW
 PHONE: (248) 252-2000

PERMITTING AGENCIES

UTILITY COMPANY:
 DTE ENERGY
 CONTACT: REBECCA PICKLER
 PHONE: (313) 235-8426

CITY OF DETROIT- ENGINEERING:
 2 WOODWARD AVE, SUITE 611
 DETROIT, MI 48226
 CONTACT: STELLA KULANGARA
 PHONE: (313) 224-3935
 STEKULO@DETROITMI.GOV

MDOT:
 DETROIT TSC
 CONTACT: OCTAVIA SHAMILY
 PHONE: (313) 967-5436
 SHAMILYO@MICHIGAN.GOV

SHEET INDEX

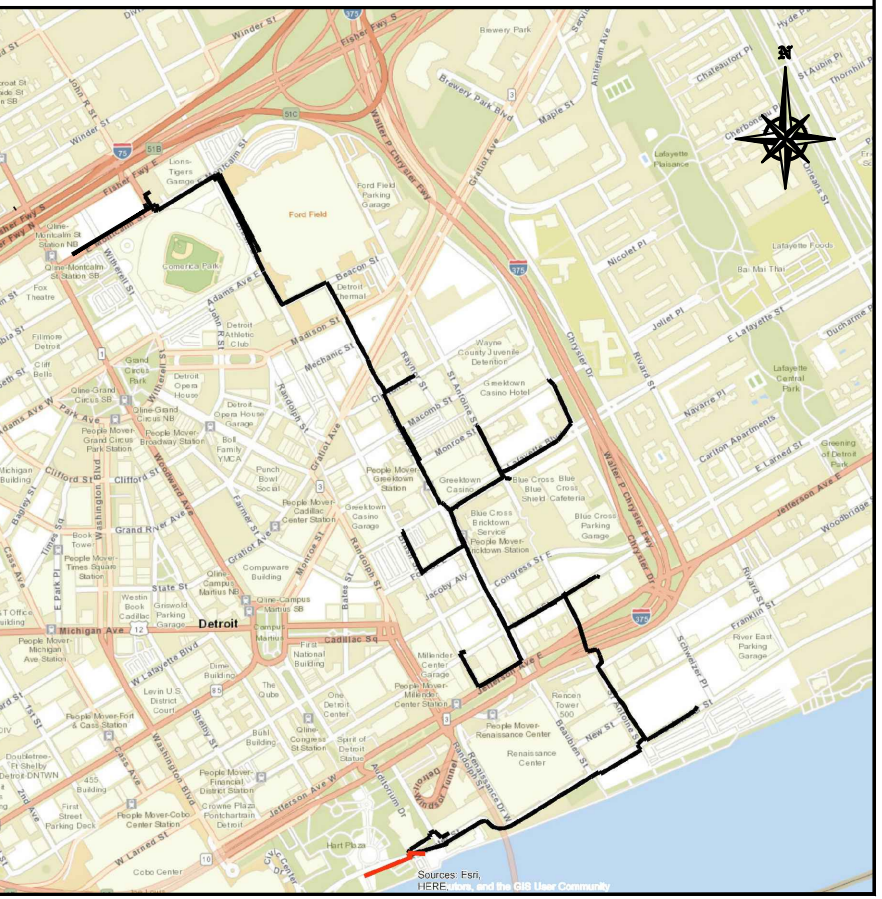
- C1 COVER SHEET & PROJECT INFORMATION
- C2 PROJECT KEY MAP
- L1 GENERAL NOTES ABBREVIATIONS & SYMBOLS
- P1 GRATIOT AVE & RANDOLPH ST
- D1 GROUND MOUNTED EQUIPMENT DETAILS

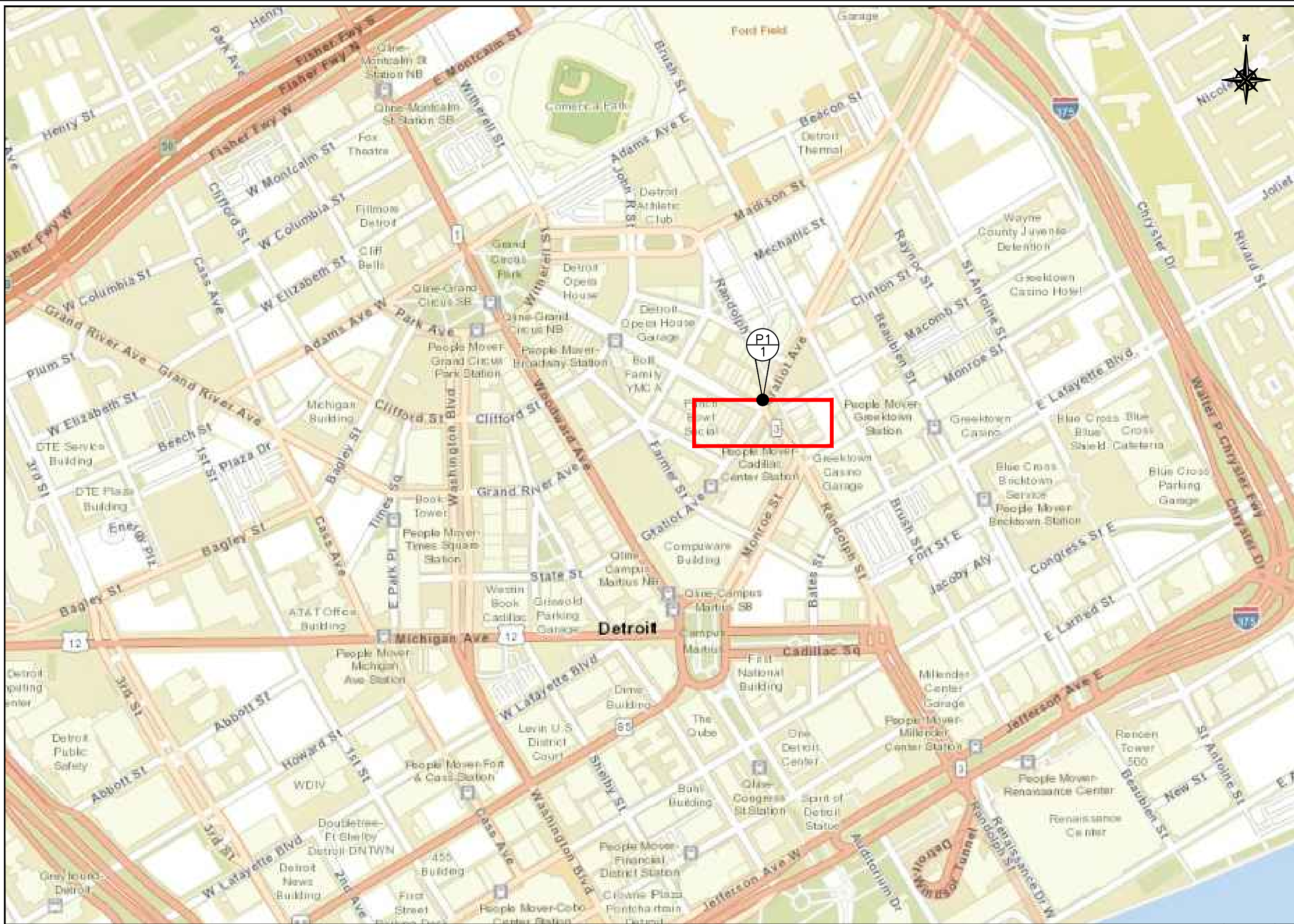
PROJECT DESCRIPTION

THESE DRAWINGS DEPICT A PORTION OF A SMALL CELL SYSTEM TELECOMMUNICATIONS NETWORK, TO BE CONSTRUCTED, OWNED AND OPERATED BY EXTENET SYSTEMS, IN THE PUBLIC RIGHT OF WAY PURSUANT TO AUTHORITY GRANTED BY THE MICHIGAN METRO ACT.

THE MAIN COMPONENTS OF THIS INSTALLATION ARE:
 THE INSTALLATION OF ONE (1) ALPHA TE-33 ELECTRICAL CABINET, ASSOCIATED ELECTRICAL COMPONENTS, AND MOUNTING EQUIPMENT AS REQUIRED.

VICINITY MAP





PROJECT KEY MAP

SCALE
NTS 1

APPLICANT

extenet SYSTEMS
YOUR NETWORK. EVERYWHERE.
3030 Warrenville Rd, Suite 340
Lisle, IL 60532
www.extenet.com

ARCHITECT/ENGINEER

VERITÀ
TELECOMMUNICATIONS CORPORATION
Verità Telecommunications Corporation
47059 Five Mile Road
Plymouth, MI 48170

REVISIONS:

#	DATE	DESCRIPTION	INT.
2	6/4/2020	PERMITTING	JL
1	3/12/2020	PERMITTING	JL

PROFESSIONAL STAMP

ISSUED FOR PERMITTING

PROJECT NAME:

**NC-MI-DTBUND-TMO
DEYH006A**

PROJECT LOCATION:

**20 W ELIZABETH ST
DETROIT, MI 48201**

SHEET TITLE:

PROJECT KEY MAP

SHEET NUMBER:

C2

GENERAL NOTES

- 1. THE CONTRACTOR SHALL BE RESPONSIBLE FOR SURVEY MONUMENTS AND/OR VERTICAL CONTROL BENCHMARKS WHICH ARE DISTURBED OR DESTROYED BY CONSTRUCTION. A LAND SURVEYOR MUST FIELD LOCATE, REFERENCE, AND/OR PRESERVE ALL HISTORICAL OR CONTROLLING MONUMENTS PRIOR TO ANY EARTHWORK. IF DESTROYED, SUCH MONUMENTS SHALL BE REPLACED WITH APPROPRIATE MONUMENTS BY A LAND SURVEYOR. A CORNER RECORD OR RECORD OF SURVEY, AS APPROPRIATE, SHALL BE FILED AS REQUIRED BY THE PROFESSIONAL LAND SURVEYORS ACT.
2. IMPORTANT NOTICE: CALL UNDERGROUND SERVICE ALERT, 811/TOLL FREE (800) 482-7171, THREE DAYS BEFORE YOU DIG.
3. CONTRACTOR SHALL BE RESPONSIBLE FOR THE POT HOLE AND LOCATING OF ALL EXISTING UTILITIES THAT CROSS THE PROPOSED TRENCH LINE AND MUST MAINTAIN A 1" MINIMUM VERTICAL CLEARANCE.
4. IF ANY EXISTING HARDSCAPE OR LANDSCAPE INDICATED ON THE APPROVE PLANS IS DAMAGED OR REMOVED DURING DEMOLITION OR CONSTRUCTION, IT SHALL BE REPAIRED AND/OR REPLACED IN KIND PER THE APPROVED PLANS.
5. CONTRACTOR SHALL REPLACE OR REPAIR ALL TRAFFIC SIGNAL LOOPS, CONDUIT, AND LANE STRIPING DAMAGED DURING CONSTRUCTION.
6. THIS PROJECT WILL BE INSPECTED BY ENGINEERING AND FIELD ENGINEERING DIVISION.
7. MANHOLES OR COVERS SHALL BE LABELED EXTENET.
8. CONTRACTOR SHALL IMPLEMENT AN EROSION CONTROL PROGRAM DURING THE PROJECT CONSTRUCTION ACTIVITIES. THE PROGRAM SHALL MEET THE APPLICABLE REQUIREMENTS OF THE STATE WATER RESOURCE CONTROL BOARD.
9. THE CONTRACTOR SHALL HAVE EMERGENCY MATERIALS AND EQUIPMENT ON HAND FOR UNFORESEEN SITUATIONS, SUCH AS DAMAGE TO UNDERGROUND WATER, SEWER, AND STORM DRAIN FACILITIES WHEREBY FLOWS MAY GENERATE EROSION AND SEDIMENT POLLUTION.



SPECIAL NOTES

- 1. INDEMNIFICATION CLAUSE: THE CONTRACTOR AGREES AND SHALL ASSUME SOLE AND COMPLETE RESPONSIBILITY OF THE JOB SITE CONDITIONS DURING THE COURSE OF CONSTRUCTION OF THIS PROJECT, INCLUDING THE SAFETY OF ALL PERSONS AND PROPERTIES. THAT THESE REQUIREMENTS SHALL APPLY CONTINUOUSLY AND NOT BE LIMITED TO NORMAL WORKING HOURS AND CONDITIONS. THE CONTRACTOR FURTHER AGREES TO DEFEND INDEMNITY AND HOLD EXTENET, REPRESENTATIVES, AND ENGINEERS HARMLESS FROM ANY AND ALL LIABILITY, REAL OR ALLEGED IN CONNECTION WITH THE PERFORMANCE OF THE WORK ON THIS PROJECT.
2. PRIOR TO THE BEGINNING OF ANY CONSTRUCTION AND THROUGHOUT THE COURSE OF CONSTRUCTION WORK, THE CONTRACTOR SHALL FULLY COMPLY WITH "MICHIGAN OCCUPATIONAL SAFETY AND HEALTH" ACT OF 1973 INCLUDING ALL REVISIONS AND AMENDMENTS THERETO.
3. ALL WORK SHALL CONFORM TO THE LATEST STANDARD "SPECIFICATIONS FOR PUBLIC WORKS CONSTRUCTION" AS ADOPTED BY THE CITY, COUNTY OR STATE AS MODIFIED BY STANDARD PLANS AND ADDENDUMS.
4. THE EXISTENCE AND LOCATION OF UTILITIES AND OTHER AGENCY'S FACILITIES AS SHOWN HEREON ARE OBTAINED BY A SEARCH OF AVAILABLE RECORDS. OTHER FACILITIES MAY EXIST. THE CONTRACTOR SHALL VERIFY PRIOR TO THE START OF CONSTRUCTION AND SHALL USE EXTREME CARE AND PROTECTIVE MEASURES TO PREVENT DAMAGE TO THESE FACILITIES. THE CONTRACTOR IS RESPONSIBLE FOR THE PROTECTION OF ALL UTILITY OR AGENCY FACILITIES WITHIN THE LIMITS OF WORK, WHETHER THEY ARE SHOWN ON THIS PLAN OR NOT.
5. THE CONTRACTOR SHALL NOTIFY THE CITY, COUNTY OR STATE ENGINEER INSPECTION DEPARTMENT, AT LEAST TWO DAYS BEFORE START OF ANY WORK REQUIRING THEIR INVOLVEMENT.
6. THE CITY, COUNTY OR STATE SHALL SPECIFY THE EXPIRATION PERIOD OF THE PERMIT FOR THIS CONSTRUCTION PROJECT.
7. THE MINIMUM COVER FOR ALL CONDUITS PLACED UNDERGROUND SHALL BE 36 INCHES TO THE FINISHED GRADE AT ALL TIMES.
8. THE CONTRACTOR SHALL TUNNEL ALL CURB AND GUTTERS AND BORE ALL CONCRETE DRIVEWAYS AND WALKWAYS AT THE DIRECTION OF THE CITY, COUNTY OR STATE ENGINEER.
9. ALL A/C AND/OR CONCRETE PAVEMENT SHALL BE REPLACED AT THE DIRECTION OF THE CITY, COUNTY OR STATE ENGINEERS.
10. ALL SHRUBS, PLANTS OR TREES THAT HAVE BEEN DAMAGED OR DISTURBED DURING THE COURSE OF THE WORK, SHALL BE REPLANTED AND/OR REPLACED SO AS TO RESTORE THE WORK SITE TO ITS ORIGINAL CONDITION.
11. THE CONTRACTOR WILL BE RESPONSIBLE FOR THE PROCESSING OF ALL APPLICANT PERMIT FORMS ALONG WITH THE REQUIRED LIABILITY INSURANCE FORMS. CLEARLY DEMONSTRATING THAT EXTENET, THE CITY, COUNTY OR STATE IS ALSO INSURED WITH THE REQUIRED LIABILITY INSURANCE FOR THIS CONSTRUCTION PROJECT.
12. VAULTS, PEDESTALS, CONDUITS AND OTHER TYPES OF SUBSTRUCTURE ARE EITHER SPECIFIED ON THIS PLAN OR WILL BE SPECIFIED BY THE CONSTRUCTION ENGINEER. ANY AND ALL DEVIATIONS FROM THE SPECIFIED TYPES OF MATERIAL MUST BE APPROVED BY THE SYSTEM ENGINEER, IN WRITING BEFORE INSTALLATION THEREOF.
13. THE CONTRACTOR SHALL VERIFY THE LOCATION OF ALL EXISTING UTILITIES INCLUDING SEWER LATERALS & WATER SERVICES TO INDIVIDUAL LOTS BOTH VERTICAL AND HORIZONTAL PRIOR TO COMMENCING IMPROVEMENT OPERATIONS.
14. CONTRACTOR SHALL MAKE EXPLORATION EXCAVATIONS AND LOCATE EXISTING FACILITIES SUFFICIENTLY AHEAD OF CONSTRUCTION TO PERMIT REVISIONS TO PLANS IF REVISION IS NECESSARY BECAUSE OF LOCATION OF EXISTING UTILITIES.
15. THE LOCATIONS OF ALL EXISTING UTILITIES SHOWN ON THESE PLANS ARE FROM EXISTING RECORDS AND CORROBORATED, WHERE POSSIBLE, WITH FIELD TIES. THE CONTRACTOR IS RESPONSIBLE FOR CONFIRMING THE LOCATIONS SHOWN, BOTH HORIZONTAL AND VERTICALLY. PRIOR TO CONSTRUCTION, IF EXISTING LOCATIONS VARY SUBSTANTIALLY FROM THE PLANS, THE ENGINEER SHOULD BE NOTIFIED TO MAKE ANY CONSTRUCTION CHANGES REQUIRED.

EROSION AND SEDIMENT CONTROL NOTES

- TEMPORARY EROSION/SEDIMENT CONTROL PRIOR TO COMPLETION OF FINAL IMPROVEMENTS, SHALL BE PERFORMED BY THE CONTRACTOR OR QUALIFIED PERSON AS INDICATED BELOW:
1. ALL REQUIREMENTS OF THE CITY, COUNTY AND STATE "STORM WATER STANDARDS" MUST BE INCORPORATED INTO THE DESIGN AND CONSTRUCTION OF THE PROPOSED GRADING/IMPROVEMENTS CONSISTENT WITH THE APPROVED STORM WATER POLLUTION PREVENTION PLAN (SWPPP), WATER QUALITY TECHNICAL REPORT (WQTR), AND/OR WATER POLLUTION CONTROL PLAN (WPCP).
2. FOR STORM DRAIN INLETS, PROVIDE A GRAVEL BAG SILT BASIN IMMEDIATELY UPSTREAM OF INLET AS INDICATED ON DETAILS.
3. FOR INLETS LOCATED AT SUMPS ADJACENT TO TOP OF SLOPES. THE CONTRACTOR SHALL ENSURE THAT WATER DRAINING TO THE SUMP IS DIRECTED INTO THE INLET AND THAT A MINIMUM OF 1.00' FREEBOARD EXISTS AND IS MAINTAINED ABOVE THE TOP OF THE INLET. IF FREEBOARD IS NOT PROVIDED BY GRADING SHOWN ON THESE PLANS THE CONTRACTOR SHALL PROVIDE IT VIA TEMPORARY MEASURES, IE. GRAVEL BAGS OR DIKES.
4. THE CONTRACTOR OR QUALIFIED PERSON SHALL BE RESPONSIBLE FOR CLEANUP OF SILT AND MUD ON ADJACENT STREET(S) AND STORM DRAIN SYSTEM DUE TO CONSTRUCTION ACTIVITY.
5. THE CONTRACTOR OR QUALIFIED PERSON SHALL CHECK AND MAINTAIN ALL LINED AND UNLINED DITCHES AFTER EACH RAINFALL.
6. THE CONTRACTOR SHALL REMOVE SILT AND DEBRIS AFTER EACH MAJOR RAINFALL.
7. EQUIPMENT AND WORKERS FOR EMERGENCY WORK SHALL BE MADE AVAILABLE AT ALL TIMES DURING THE RAINY SEASON. ALL NECESSARY MATERIALS SHALL BE STOCKPILED ON SITE AT CONVENIENT LOCATIONS TO FACILITATE RAPID CONSTRUCTION OF TEMPORARY DEVICES WHEN RAIN IS IMMINENT.
8. THE CONTRACTOR SHALL RESTORE ALL EROSION/SEDIMENT CONTROL DEVICES TO WORKING ORDER TO THE SATISFACTION OF THE CITY ENGINEER OF RESIDENT ENGINEER AFTER EACH RUN-OFF PRODUCING RAINFALL.
9. THE CONTRACTOR SHALL INSTALL ADDITIONAL EROSION/SEDIMENT CONTROL MEASURES AS MAY BE REQUIRED BY THE RESIDENT ENGINEER DUE TO UNEXPECTED GRADING OPERATIONS OR UNFORESEEN CIRCUMSTANCES, WHICH MAY ARISE.
10. THE CONTRACTOR SHALL BE RESPONSIBLE AND SHALL TAKE NECESSARY PRECAUTIONS TO PREVENT PUBLIC TRESPASS ONTO AREAS WHERE IMPOUNDED WATERS CREATE A HAZARDOUS CONDITION.
11. ALL EROSION/SEDIMENT CONTROL MEASURES PROVIDED PER THE APPROVED GRADING PLAN SHALL BE INCORPORATED HERON. ALL EROSION/SEDIMENT CONTROL FOR INTERIM CONDITIONS SHALL BE DONE TO THE SATISFACTION OF THE RESIDENT ENGINEER.
12. GRADED AREAS AROUND THE PROJECT PERIMETER MUST DRAIN AWAY FROM THE FACE OF THE SLOPE AT THE CONCLUSION OF EACH WORKING DAY.
13. ALL REMOVABLE PROTECTIVE DEVICES SHOWN SHALL BE IN PLACE AT THE END OF EACH WORKING DAY WHEN RAIN IS IMMINENT.
14. THE CONTRACTOR SHALL ONLY GRADE, INCLUDING CLEARING AND GRUBBING FOR THE AREAS FOR WHICH THE CONTRACTOR OR QUALIFIED PERSON CAN PROVIDE EROSION/SEDIMENT CONTROL MEASURES.
15. THE CONTRACTOR SHALL ARRANGE FOR WEEKLY MEETINGS DURING OCTOBER 1ST TO APRIL 30TH FOR PROJECT TEAM (GENERAL CONTRACTOR, QUALIFIED PERSON, EROSION CONTROL SUBCONTRACTOR IF AN ENGINEER OF WORK, OWNER/DEVELOPER AND THE RESIDENT ENGINEER) TO EVALUATE THE ADEQUACY OF THE EROSION/SEDIMENT CONTROL MEASURE AND OTHER RELATED CONSTRUCTION ACTIVITIES.

ABBREVIATIONS

Table with 4 columns of abbreviations and their corresponding full names. Includes terms like ALUMINUM ALLOY, FUTURE FLOOR, PRELIMINARY POWER QUANTITY, etc.

CODE COMPLIANCE

- ALL WORK AND MATERIALS SHALL BE PERFORMED AND INSTALLED IN ACCORDANCE WITH THE CURRENT EDITIONS OF THE FOLLOWING CODES AS ADOPTED BY THE LOCAL GOVERNING AUTHORITIES. NOTHING IN THESE PLANS IS TO BE CONSTRUCTED TO PERMIT WORK NOT CONFORMING TO THESE CODES.
1. MICHIGAN BUILDING CODE IBC.
2. MICHIGAN ADMINISTRATIVE REGULATIONS.
3. ANSI/ EIA-222-F LIFE SAFETY CODE NFPA.
4. BUILDING OFFICIALS AND CODE ADMINISTRATORS (BOCA)
5. MICHIGAN ELECTRICAL CODE NEC.
6. MICHIGAN MECHANICAL CODE IMC.
7. MICHIGAN PLUMBING CODE IPC.
8. LOCAL BUILDING CODE(S).
9. CITY AND/OR COUNTY ORDINANCES.
10. MUST COMPLY TO LATEST MICHIGAN FIRE CODE. (AND LATEST MUNICIPAL FIRE CODE).

GENERAL NOTES

ROW_GROUND_CONSTRUCTION NOTES:

- 1. 120V POWER REQUIRED FOR 2-WIRE SERVICE.
2. GC TO REMOVE/CLEAN ALL DEBRIS, NAILS, STAPLES, OR NON-USED VERTICALS OFF THE POLE.
3. ALL CONSTRUCTION SHALL BE IN ACCORDANCE WITH MUNICIPAL, COUNTY, STATE, AND FEDERAL STANDARDS AND REGULATIONS.
4. CALL 811 72 HOURS PRIOR TO EXCAVATING AT (800) 482-7171.
5. ALL LANDSCAPING TO BE RESTORED TO ORIGINAL CONDITION OR BETTER.
6. ALL EQUIPMENT TO BE BONDED.
7. METERING CABINET(IF PLACED) REQUIRES 3" CLEARANCE AT DOOR OPENING.
8. CAULK CABINET BASE AT PAD.
STANDARD GROUNDING NOTES:
1. GROUND TESTED AT 25 OHMS OR LESS.
2. 5/8"x8" ROD, CAD WELD OR UL LISTED DIRECT BURY CLAMP BELOW GRADE.
3. #8 GROUND AND BOND WIRE.
4. MOLDING, STAPLED EVERY 1" AND AT EACH END
5. GROUND RODS 3' FROM POLE.

STANDARD CONDUIT NOTES:

- 1. FOR UNDERGROUND USE SCHEDULE 40.
2. FOR RISERS USE SCHEDULE 80.
3. PLACE 2" SDR-11 RED CONDUIT FOR UG POWER APPLICATIONS. RISERS TO BE ATTACHED TO POLE WITH STANDARD U-CLAMPS AND LAG SCREWS.
5. RISER U-CLAMPS TO BE INSTALLED EVERY 5'.
6. CONDUIT UNDER 1" MAY BE ATTACHED WITH GROUND WIRE MOLDING STAPLES.
7. ALL CONDUIT WILL BE PROOFED WITH A MANDREL AND EQUIPPED WITH PULL ROPE OR MULE TAPE.

STANDARD TRENCHING NOTES:

- 1. MAINTAIN 40" MINIMUM COVER FOR ELECTRICAL CONDUIT.
2. MAINTAIN 40" MINIMUM COVER FOR COMMUNICATIONS CONDUIT.
3. IN STREET SLURRY TO GRADE AND MILL DOWN 1-1/2" FOR AC CAP.
4. IN DIRT SLURRY 18" FROM GRADE, AND FILL WITH 95% COMPACTION NATIVE SOIL FOR BALANCE.
5. PLACE WARNING TAPE IN TRENCH 12" ABOVE ALL CONDUITS AND #18 WARNING TAPE ABOVE GROUND RING.

ROW UTILITY POLE CONSTRUCTION NOTES:

- 1. NO BOLT THREADS TO PROTRUDE MORE THAN 1-1/2".
2. FILL ALL HOLES LEFT IN POLE FROM REARRANGEMENT OF CLIMBERS.
3. ALL CLIMB STEPS NEXT TO CONDUIT SHALL HAVE EXTENDED STEPS.
4. CABLE NOT TO IMPEDE 15" CLEAR SPACE OFF POLE FACE (12:00).
5. 90" SHORT SWEEPS UNDER ANTENNA ARM. ALL CABLES MUST ONLY TRANSITION ON THE INSIDE OR BOTTOM OF ARMS (NO CABLE ON TOP OF ARMS).
6. USE CABLE CLAMPS TO SECURE CABLE TO ARMS; PLACE 2" CARRIER CABLE ID TAGS ON BOTH SIDES OF ARMS.
7. USE 90° CONNECTOR AT CABLE CONNECTION TO ANTENNAS.
8. USE 1/2" CABLE ON ANTENNAS UNLESS OTHERWISE SPECIFIED.
9. FILL VOID AROUND CABLES AT CONDUIT OPENING WITH FOAM SEALANT TO PREVENT WATER INTRUSION.

Legend & Symbols table with multiple columns. Includes symbols for GAS, OIL, WATER, STORM, SANITARY, CABLE TV, TELEPHONE, FIBER OPTIC, POWER, OVERHEAD POWER, COMM., BUILDING, WATER BODY, WASH/WETLAND, CULVERT, FENCE, BLOCK WALL, GUARDRAIL, ROAD EDGE/CURB, LIP OF GUTTER, DRIVEWAY, SIDEWALK, BOUNDARY LINE, RIGHT OF WAY, PROPERTY LINE, RAILROAD, LANE STRIPE, AERIAL NEW BUILD, AERIAL OVERLASH, DIRECTIONAL BORE, OPEN TRENCH, PLOW, STATIONING, VAULT, BORE PIT, BUSH, DECIDUOUS TREE, CONIFEROUS TREE, ELECTRIC SIGN, BIKE RACK, TRASHCAN, POST/MARKER, UNKNOWN MANHOLE, UNKNOWN VAULT, FIBER VAULT, FIBER PED, TELEPHONE MANHOLE, TELEPHONE VAULT, TELEPHONE LARGE PED, TELEPHONE SMALL PED, CATV HAND HOLE, CATV VAULT, CATV LARGE PED, CABLE SMALL PED, SANITARY SEWER MANHOLE, STORM SEWER MANHOLE, STORM CATCH BASIN, WATER BLOW OFF, WATER VALVE, WATER CURB BOX, WATER GATE AND VALVE, WATER MANHOLE, FIRE HYDRANT, WATER VAULT, BACKFLOW VALVE, AIR RELIEF VALVE, WATER WELL MONITOR, PLUG & CAP, PRESSURE REDUCING VALVE, NON-POTABLE VALVE, NON-POTABLE MANHOLE, CATHODIC PROT. TEST, JUNCTION BOX, PULL BOX, SUBSURFACE XFR, PADMOUNTED 3PH XFR, PAD MOUNTED SWITCHING, PAD MOUNTED JUNCTION, PAD MOUNTED SECTIONALIZER, PAD MOUNTED CAPACITOR, PAD MOUNTED BREAK SWITCH, PAD MOUNTED FUSE DISCONNECT, RECTANGLE POWER MANHOLE, LARGE POWER PED, POWER MANHOLE, ELECTRIC CABINET, CROSS WALK POLE, LIGHT POLE SMALL, LIGHT POLE LARGE, LIGHT POLE LARGE DOUBLE, POWER POLE, TRANSFORMER POLE, JOINT POLE, JOINT POLE W/ TRANSFORMER, TELEPHONE POLE, CATV POLE, STEEL POLE, CONCRETE POLE, MIDSPAN CROSSING, TRAFFIC SIGNAL, RISER POLE, POWER METER, TRAFFIC SIGNAL POLE, GAS VALVE, GAS MANHOLE, NORTH ARROW, FIBER, FIBER COUNT, FIBER SPLICE, FIBER MIDSHEATH, FIBER NODE, FIBER HUB, STORAGE LOOP.

ROW CONSTRUCTION GENERAL NOTES

SCALE NTS 2

LEGEND & SYMBOLS

SCALE NTS 1

APPLICANT



3030 Warrenville Rd, Suite 340
Lisle, IL 60532
www.extenet.com

ARCHITECT/ENGINEER



VeritA Telecommunications Corporation
47059 Five Mile Road
Plymouth, MI 48170

REVISIONS:

Table with 4 columns: #, DATE, DESCRIPTION, INT. Contains two revision entries for permitting.

PROFESSIONAL STAMP

ISSUED FOR PERMITTING

PROJECT NAME:

NC-MI-DTBUND-TMO
NC-MI-DTBUND-TMO
DEYH006A

PROJECT LOCATION:

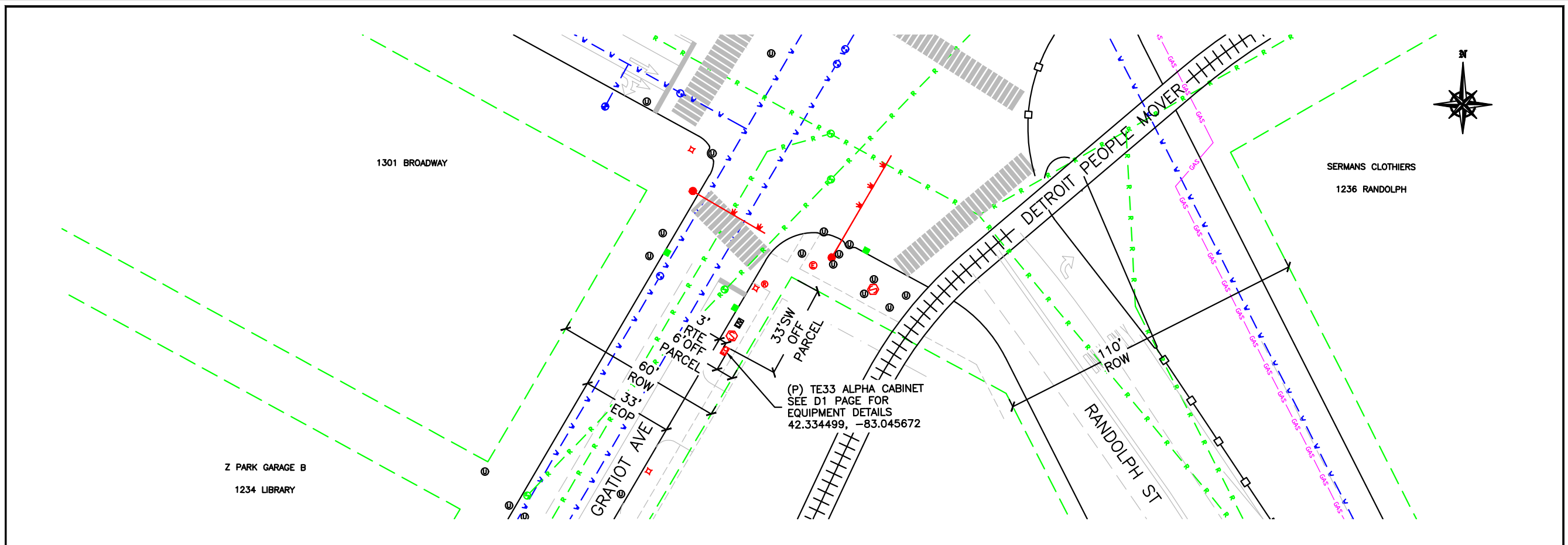
20 W ELIZABETH ST
DETROIT, MI 48201

SHEET TITLE:

GENERAL NOTES
ABBREVIATIONS
& SYMBOLS

SHEET NUMBER:


L1



ROUTE PLAN


0' 10' 20' 40' B-SCALE 1"=40'-0" D-SCALE 1"=20'-0" 1

APPLICANT



3030 Warrenville Rd, Suite 340
Lisle, IL 60532
www.extenet.com

ARCHITECT/ENGINEER



Verità
TELECOMMUNICATIONS CORPORATION
Verità Telecommunications Corporation
47059 Five Mile Road
Plymouth, MI 48170

REVISIONS:

#	DATE	DESCRIPTION	INT.
2	6/4/2020	PERMITTING	JL
1	3/12/2020	PERMITTING	JL
#	DATE	DESCRIPTION	INT.

PROFESSIONAL STAMP

ISSUED FOR PERMITTING

PROJECT NAME:

NC-MI-DTBUND-TMO DEYH006A

PROJECT LOCATION:

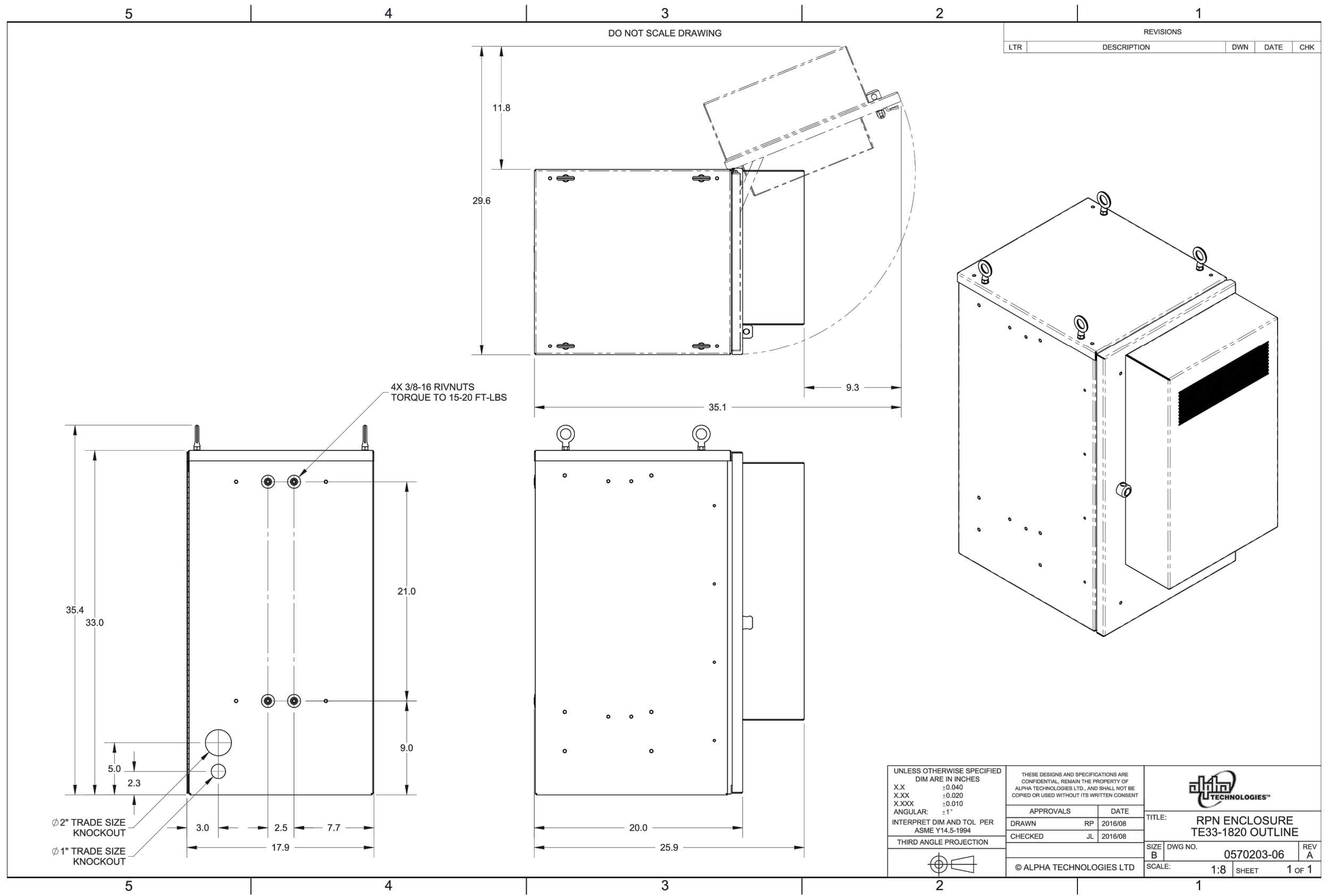
**20 W ELIZABETH ST
DETROIT, MI 48201**

SHEET TITLE:

**ROUTE PLAN
GRATIOT AVE &
RANDOLPH ST**

SHEET NUMBER:

P1



REVISIONS				
LTR	DESCRIPTION	DWN	DATE	CHK

APPLICANT

extenet YOUR NETWORK.
SYSTEMS EVERYWHERE.

3030 Warrenville Rd, Suite 340
Lisle, IL 60532
www.extenet.com

ARCHITECT/ENGINEER

VERITÀ
TELECOMMUNICATIONS CORPORATION

Verità Telecommunications Corporation
47059 Five Mile Road
Plymouth, MI 48170

REVISIONS:

#	DATE	DESCRIPTION	INT.
2	6/4/2020	PERMITTING	JL
1	3/12/2020	PERMITTING	JL

PROFESSIONAL STAMP

ISSUED FOR PERMITTING

PROJECT NAME:
**NC-MI-DTBUND-TMO
DEYH006A**

PROJECT LOCATION:
**20 W ELIZABETH ST
DETROIT, MI 48201**

SHEET TITLE:
**ROUTE PLAN
E MONTCALM ST
& BRUSH ST**

SHEET NUMBER:
D1