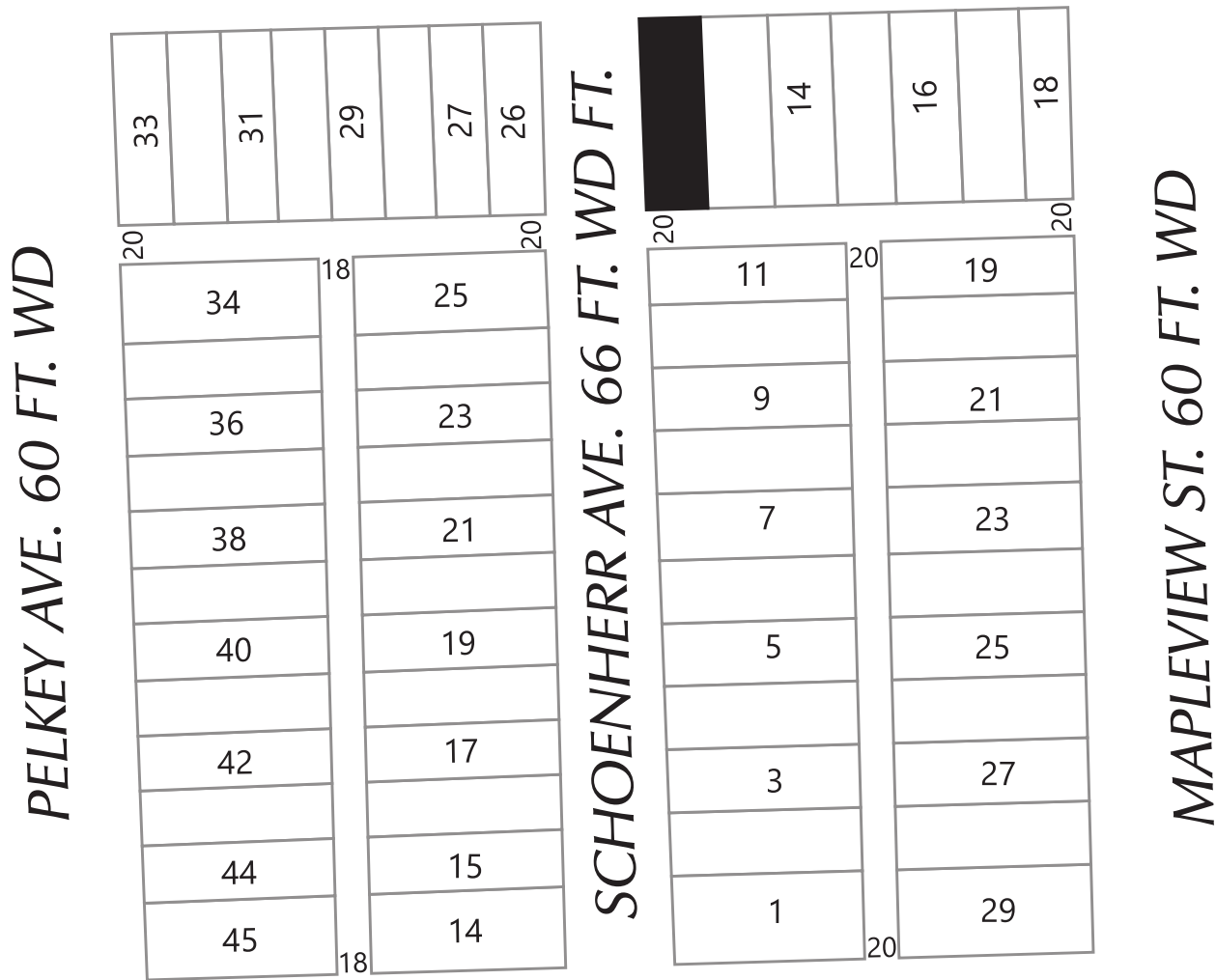




**SEVEN MILE ROAD 66 FT. WD**



**EASTWOOD AVE 50 FT. WD**

**ENCROACHMENT:**  
 - INSTALLATION OF ALPHA  
 SE-41 ELECTRICAL CABINET

(FOR OFFICE USE ONLY)

CARTO 67 B & C

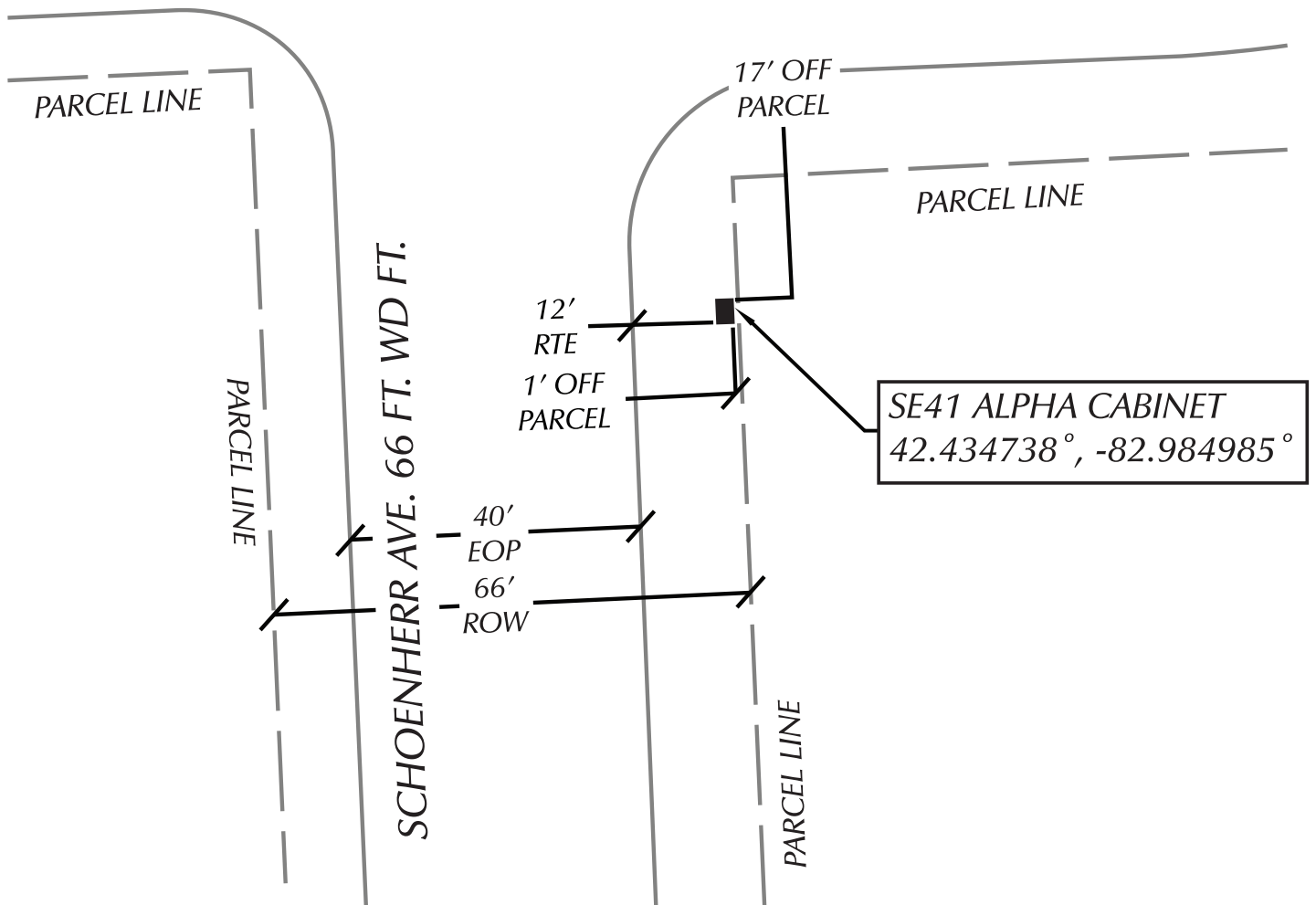
<b>B</b>					
<b>A</b>					
DESCRIPTION		DRWN	CHKD	APPD	DATE
REVISIONS					
DRAWN BY		CHECKED			
KJ		KSM			
DATE		APPROVED BY			
08-04-20		JD			

ENCROACHMENT OF THE NORTHWEST  
 CORNER IN THE BLOCK BOUND BY  
 EASTWOOD AVE., MAPLEVIEW ST.,  
 SCHOENHERR AVE., AND SEVEN MILE  
 ROAD.

<b>CITY OF DETROIT</b>	
CITY ENGINEERING DIVISION	
SURVEY BUREAU	
JOB NO.	01-01
DRWG. NO.	X



# SEVEN MILE ROAD 66 FT. WD



**ENCROACHMENT:**  
 - INSTALLATION OF ALPHA  
 SE-41 ELECTRICAL CABINET

(FOR OFFICE USE ONLY)

CARTO 67 B & C

<b>B</b>					
<b>A</b>					
DESCRIPTION		DRWN	CHKD	APPD	DATE
REVISIONS					
DRAWN BY	KJ		CHECKED	KSM	
DATE	08-04-20		APPROVED BY	JD	

ENCROACHMENT OF THE NORTHWEST  
 CORNER IN THE BLOCK BOUND BY  
 EASTWOOD AVE., MAPLEVIEW ST.,  
 SCHOENHERR AVE., AND SEVEN MILE  
 ROAD.

<b>CITY OF DETROIT</b>	
CITY ENGINEERING DIVISION	
SURVEY BUREAU	
JOB NO.	01-01
DRWG. NO.	X