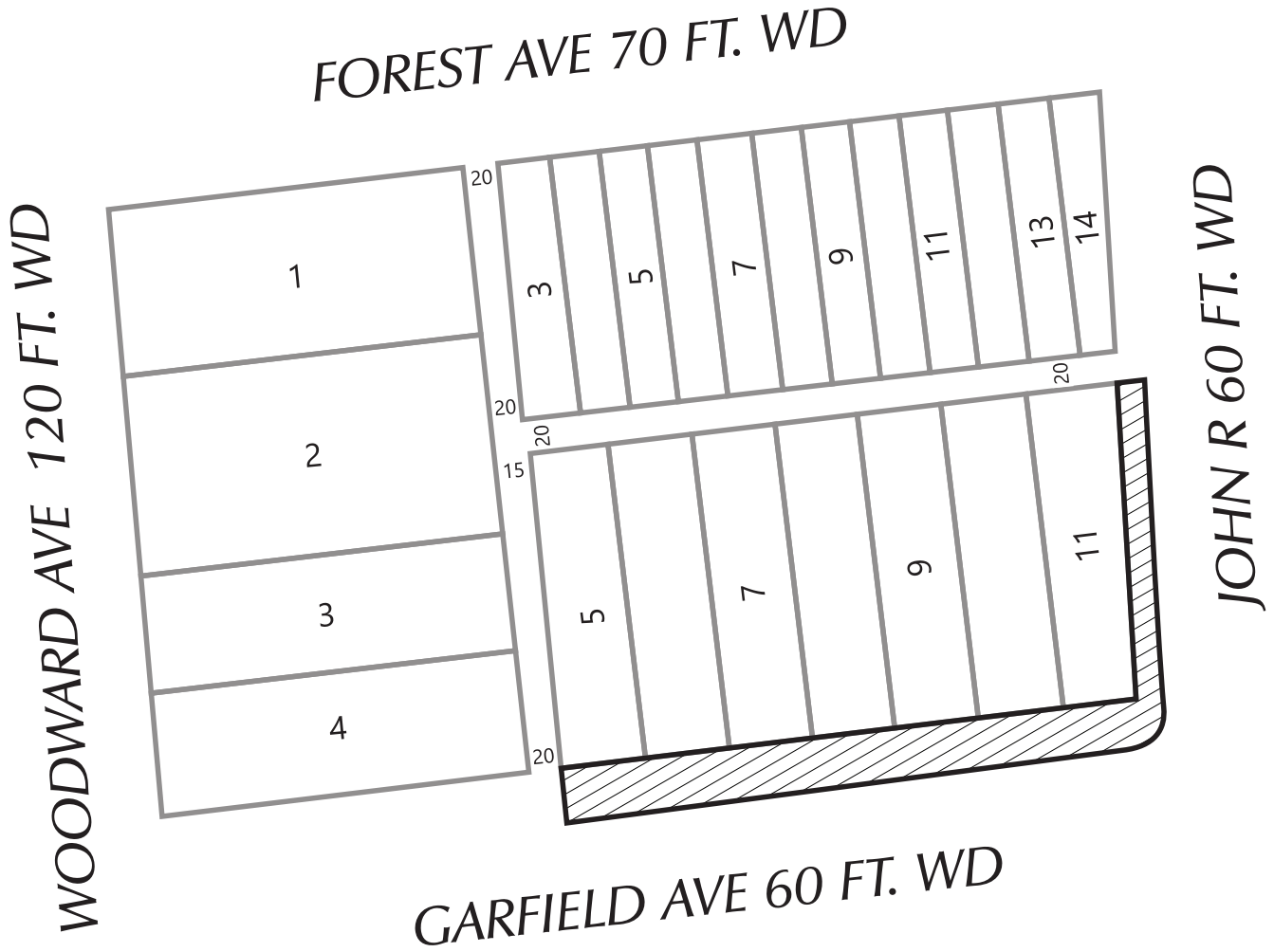
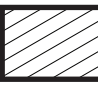


PETITION NO.1306
 C/O ERIC WILLIAMS
 STONEFIELD ENGINEERING AND DESIGN, LLC.;
 REPRESENTING POAH DD SUGAR HILL, LLC.
 EWILLIAMS@STONEFIELDENG.COM



ENCROACHMENT:
 Under drain, concrete pavers,
 crushed slate and non-standard
 sidewalk jointing area.

(FOR OFFICE USE ONLY)

CARTO 30 F

B					
A					
DESCRIPTION	DRWN	CHKD	APPD	DATE	
REVISIONS					
DRAWN BY	KJ		CHECKED		
DATE	08-03-20		APPROVED BY	JD	

ENCROACHMENT ON SIDEWALK
 ALONG GARFIELD ST., IN THE BLOCK
 BOUND BY GARFIELD AVE., WOOD-
 WARD AVE., FOREST AVE., AND JOHN R.

CITY OF DETROIT	
CITY ENGINEERING DIVISION	
SURVEY BUREAU	
JOB NO.	01-01
DRWG. NO.	X 1306