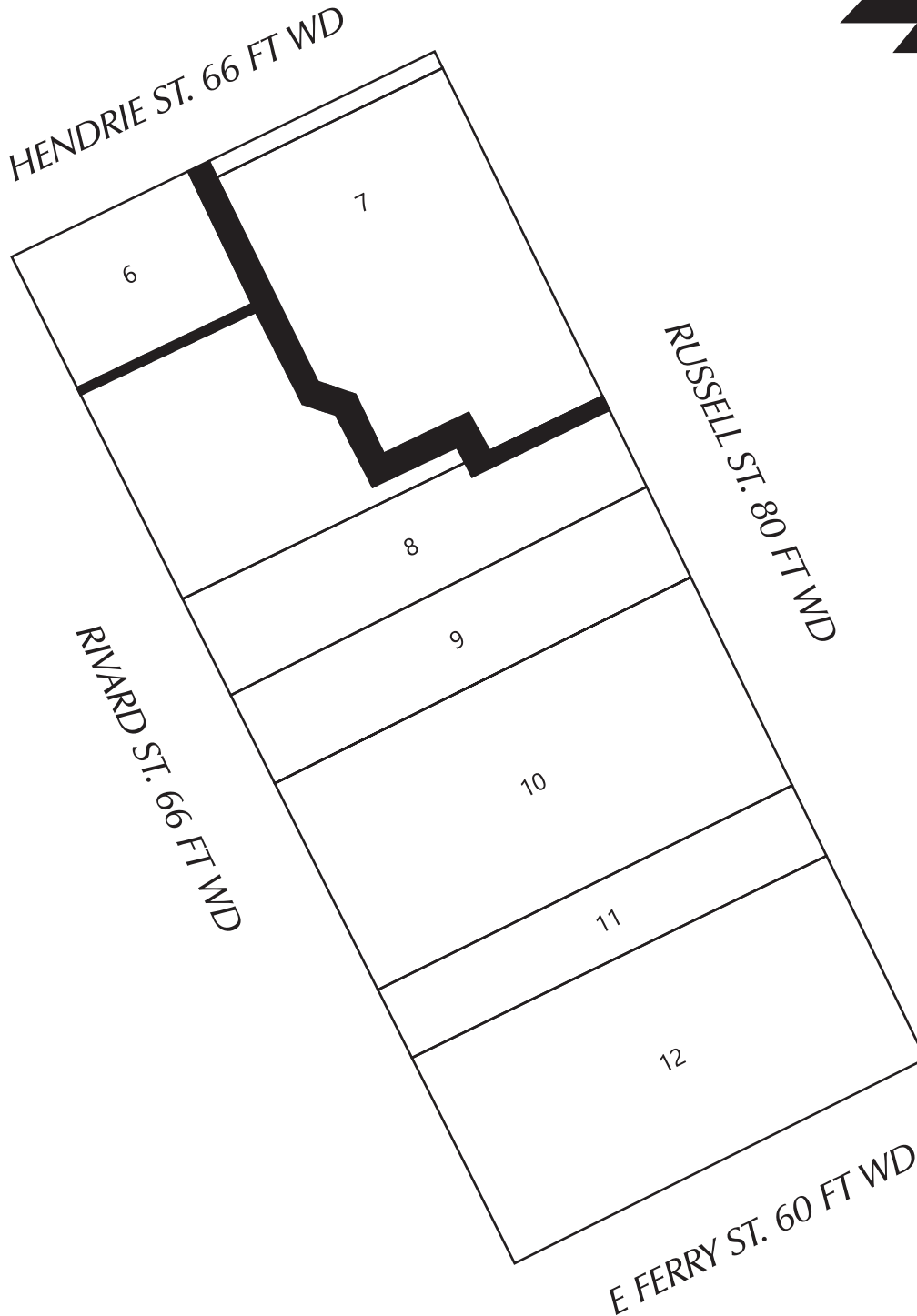


Michael Marks, from Giffels-Webster
 28 W. Adams, Suite 1200
 Detroit, MI 48226
 313-962-4442



— *OUTRIGHT VACATION*

(FOR OFFICE USE ONLY)

CARTO 28

| | | | | | |
|-------------|----------|------|-------------|------|--|
| B | | | | | |
| A | | | | | |
| DESCRIPTION | DRWN | CHKD | APPD | DATE | |
| REVISIONS | | | | | |
| DRAWN BY | KJ | | CHECKED | KSM | |
| DATE | 05-20-20 | | APPROVED BY | JD | |

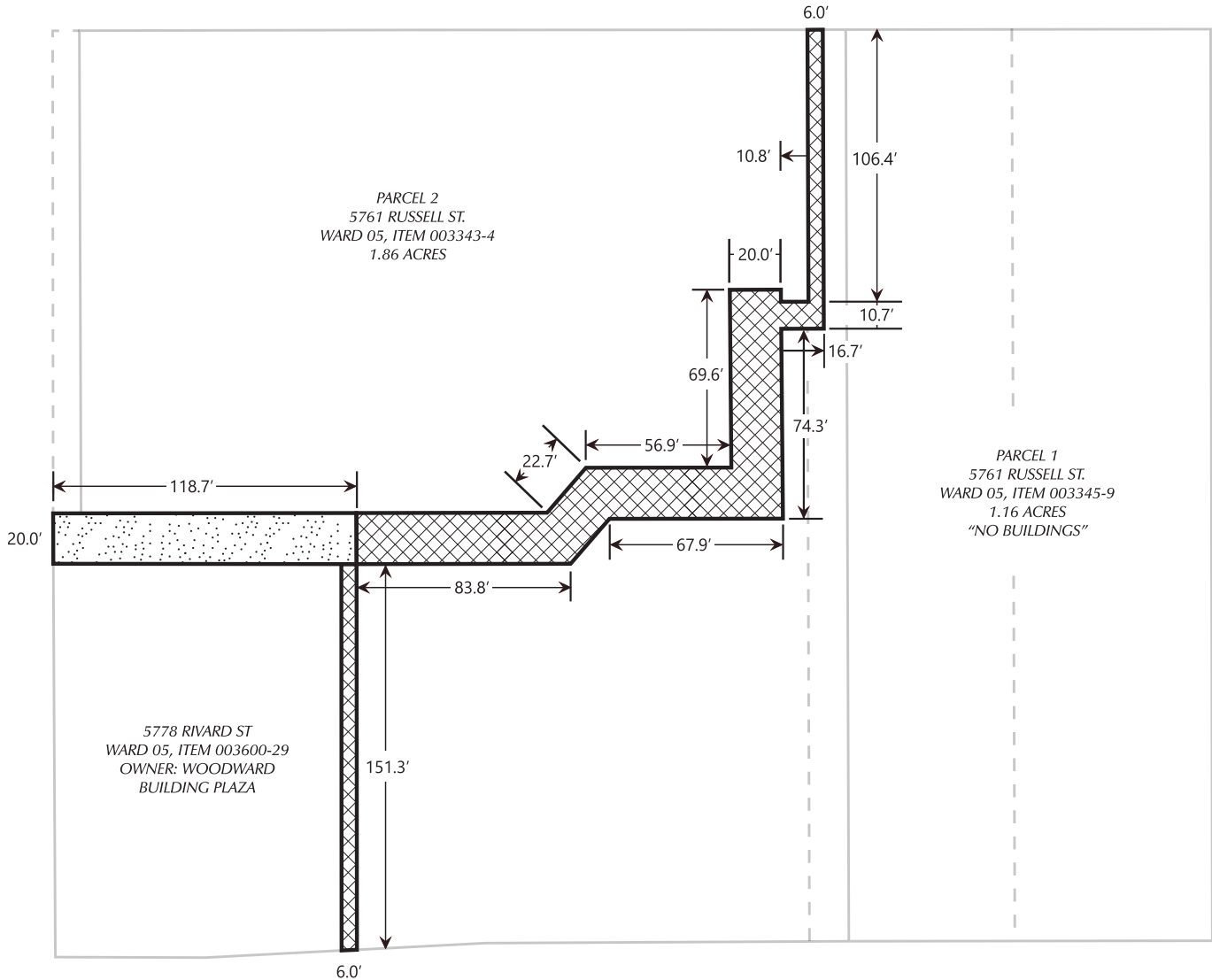
VACATION OF PUBLIC ALLEY AND MULTIPLE
 EASEMENTS,
 IN THE BLOCK BOUND BY RIVARD ST.,
 HENDRIE ST., RUSSELL ST., AND E FERRY ST.

CITY OF DETROIT
 CITY ENGINEERING DIVISION
 SURVEY BUREAU

JOB NO. 01-01

DRWG. NO. X

Michael Marks, from Giffels-Webster
 28 W. Adams, Suite 1200
 Detroit, MI 48226
 313-962-4442



— OUTRIGHT VACATION OF ALLEY



— OUTRIGHT VACATION OF PUBLIC EASEMENT

(FOR OFFICE USE ONLY)

CARTO 28

| | | | | | |
|-------------|----------|-------------|------|------|------|
| B | | | | | |
| | A | | | | |
| DESCRIPTION | | DRWN | CHKD | APPD | DATE |
| REVISIONS | | | | | |
| DRAWN BY | KJ | CHECKED | KSM | | |
| DATE | 05-20-20 | APPROVED BY | JD | | |

VACATION OF PUBLIC ALLEY AND MULTIPLE
 EASEMENTS,
 IN THE BLOCK BOUND BY RIVARD ST.,
 HENDRIE ST., RUSSELL ST., AND E FERRY ST.

CITY OF DETROIT
 CITY ENGINEERING DIVISION
 SURVEY BUREAU

JOB NO. 01-02

DRWG. NO. X