

Janice M. Winfrey
City Clerk

City of Detroit
OFFICE OF THE CITY CLERK

Andre P. Gilbert II
Deputy City Clerk

DEPARTMENTAL REFERENCE COMMUNICATION

Thursday, April 09, 2020

To: The Department or Commission Listed Below

From: Janice M. Winfrey, Detroit City Clerk

The following petition is herewith referred to you for report and recommendation to the City Council.

In accordance with that body's directive, kindly return the same with your report in duplicate within four (4) weeks.

PLANNING AND DEVELOPMENT DEPARTMENT
DPW - CITY ENGINEERING DIVISION

1264 *5725 Walnut LLC request to encroach into the public alley between Congress Street and Larned Street, west of Griswold Street..*



CITY OF DETROIT
DEPARTMENT OF PUBLIC WORKS
CITY ENGINEERING DIVISION

COLEMAN A. YOUNG MUNICIPAL CENTER
2 WOODWARD AVE. SUITE 601
DETROIT, MICHIGAN 48226
PHONE: (313) 224-3949 • TTY:711
FAX: (313) 224-3471
WWW.DETROITMI.GOV

To: Clerk's Office
From: The Department of Public Works
City Engineering Division
MapsandRecordsBureau@DetroitMI.Gov
(313) 224-3970

Petitioner:
5725 Walnut LLC
Represented by Giffels Webster, Michael Marks
28 W. Adams, Suite 1200, Detroit, MI 48226
(313) 962-4442

The petitioner has received a project consultation from the Department of Public Works: City Engineering Division and has been advised the following:

Type of action recommended:

Petition to encroach into the public alley between Congress Street and Larned Street, west of Griswold Street.

Based on the scope of the project the following requirements have been outlined:

- No further requirement noted.

Sincerely,

Jered Dean
Manager II
Maps and Records Bureau



February 11, 2020

HAND DELIVER

**Honorable Detroit City Council
C/o Detroit City Clerk
200 Coleman A. Young Municipal Center
2 Woodward Avenue
Detroit, Michigan 48226**

RE: Giffels Webster – Request for an easement into of the rights-of-way within the block bounded by Congress Street (60 feet wide), Griswold Street (90 feet wide), Larned Street (60 feet wide), and Shelby Street (60 feet wide).

Giffels Webster, 28 W. Adams, Suite 1200, Detroit, Michigan 48226 on behalf of 5725 Walnut LLC, 630 Woodward Avenue, Detroit, MI 48226, respectfully requests the following easement into the right-of-way within the block bounded by Congress Street (60 feet wide), Griswold Street (90 feet wide), Larned Street (60 feet wide), and Shelby Street (60 feet wide) in the City of Detroit:

- An underground electrical easement across the public alley (20 feet wide) for emergency power conduits from the Buhl Parking Garage, located at 525 Griswold Street, to the Buhl Building, located at 535 Griswold Street. This easement will begin 155.4 feet west of the western Griswold Street right-of-way, is 5.0 feet wide, and spans the entire 20.0 foot width of the alley. The easement will go from grade to 10.0 feet below grade.

The requested electrical easement is critical to place an emergency generator in the Buhl Parking Garage to support the Buhl Building. Please refer to the attached detailed sketch for further clarification.

If you should have any questions, please do not hesitate to contact me at (P) 313.962.4442 (M) 313.980.1469 or at mmarks@giffelswebster.com.

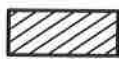
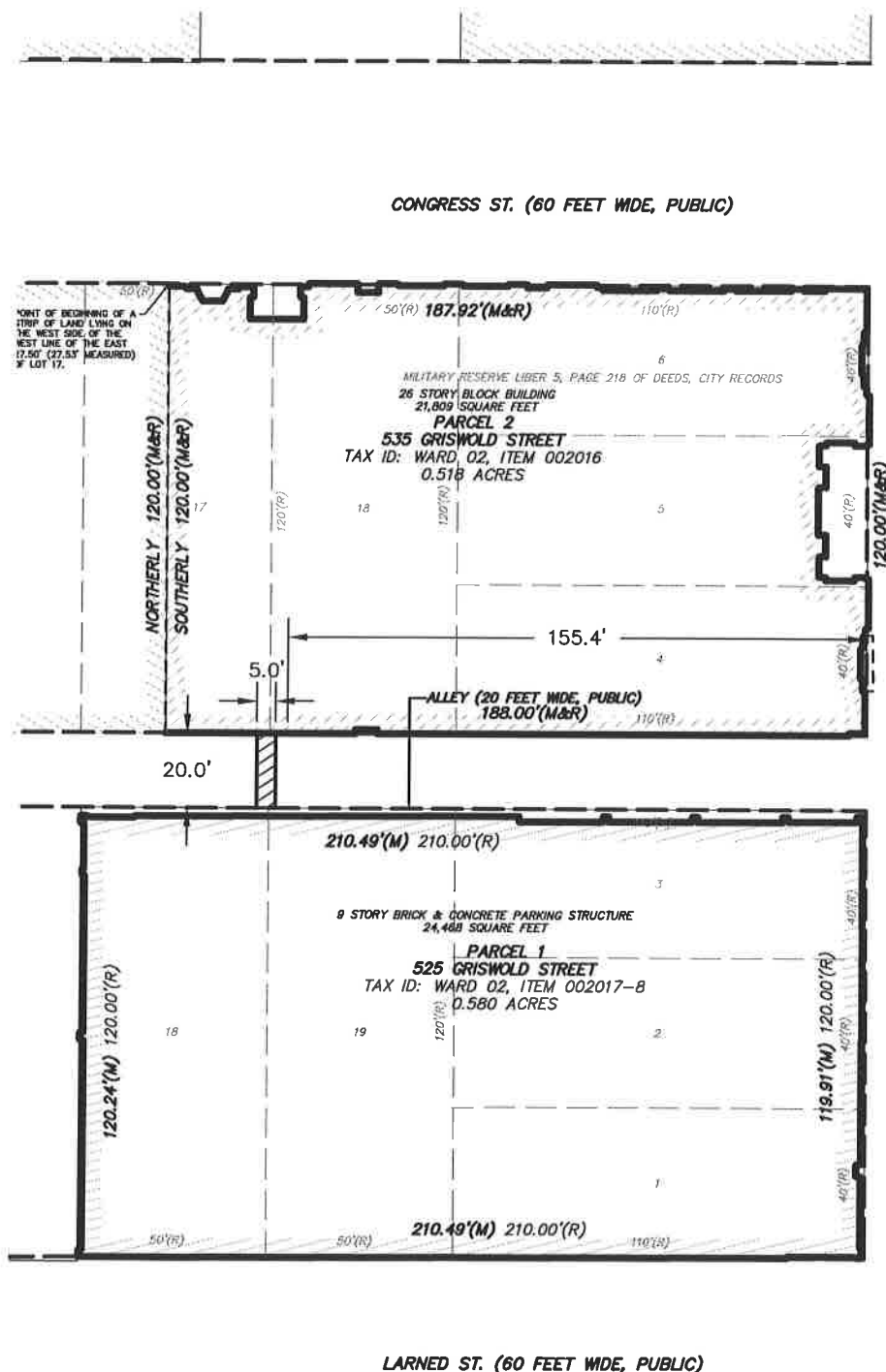
Respectfully,

A handwritten signature in cursive script, appearing to read "Michael Marks".

Michael Marks P.E.,
Partner
Giffels Webster

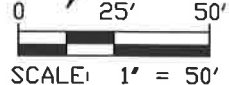
attachment

IDET-FILED2\Projects\19712-000 Buhl Emergency Feed ROW Easement\Permits\ROW Modification\GW Petition Materials\Electrical Easement.dwg



BELOW GRADE PRIVATE ELECTRICAL EASEMENT

GRISWOLD ST. (90 FEET WIDE, PUBLIC)



BUHL EMERGENCY FEED CITY OF DETROIT, WAYNE COUNTY, MICHIGAN ELECTRICAL EASEMENT

giffels webster
 Engineers Surveyors Planners
 Landscape Architects

28 West Adams Road
 Suite 1200
 Detroit, MI 48226
 p (313) 962-4442
 f (313) 962-5068
 www.giffelswebster.com

Executive:	MWM
Manager:	MWM
Designer:	AMG
Quality Control:	TET

Developed For:
 5725 WALNUT LLC
 630 WOODWARD
 DETROIT, MI 48226

DATE:	ISSUE:
1/10/2020	OWNER REVIEW

Date:	01.08.2020
Scale:	1"=50'
Sheet:	1 OF 1
Project:	19712.00D

Copyright © 2019 Giffels Webster.
 No reproduction shall be made
 without the prior written consent of
 Giffels Webster.

2020-04-09

1264

1264 *5725 Walnut LLC request to
encroach into the public alley
between Congress
Street and Larned Street,
west of Griswold Street.*

REFERRED TO THE FOLLOWING DEPARTMENT(S)

PLANNING AND DEVELOPMENT DEPARTMENT
DPW - CITY ENGINEERING DIVISION