



City of Detroit
Inter-Departmental Communication

TO: Richard Doherty, City Engineer
City Engineering/Department of Public Works

FROM: Debra Singleton, Engineer
Detroit Water and Sewerage Department

DATE: April 21, 2020

RE: Petition No.1174
Requested Encroachment In West Grand Blvd. At 3396 Vinewood, In The Area
Bound By West Grand Blvd., Vinewood, And Ash

The subject petition has been reviewed by this office. With regard to DWSD's interests, our comments are as follows:

- Our records indicate there are a water main and sewers in W Grand Blvd. near the requested area of encroachment. DWSD has no objections to the requested encroachments provided that the attached Provisions for Encroachment are strictly followed.

If you have any questions, please call me at (313) 267-8309 or Mohammed Fa Siddique at (313)-964-9245.

Sincerely,

Debra Singleton
Engineer
Permits

DS/MS/gl

Attachments

CC: Mohamad Farhat, CSF

Michael Duggan, Mayor

City of Detroit
City Engineering Division, Department of Public Works
Maps and Records Bureau

NOTICE OF PROPOSED CHANGE IN PROPERTY

Date: _____

Petition: _____

- | | |
|---|---|
| <input type="checkbox"/> AT&T Telecommunication | |
| <input type="checkbox"/> Comcast Television (CATV) | <input type="checkbox"/> Berm Use |
| <input type="checkbox"/> Detroit Edison (DTE) | |
| <input type="checkbox"/> Fire Department | <input type="checkbox"/> Conversion to Easement |
| <input type="checkbox"/> Great Lakes Water Authority | |
| <input type="checkbox"/> Land Bank Authority | <input type="checkbox"/> Dedication |
| <input type="checkbox"/> Michcon (DTE) | |
| <input type="checkbox"/> Planning & Development Department | <input type="checkbox"/> Encroachment |
| <input type="checkbox"/> Public Lighting Authority | |
| <input type="checkbox"/> Public Lighting Department | <input type="checkbox"/> Outright Vacation |
| <input type="checkbox"/> Police Department | |
| <input type="checkbox"/> Solid Waste Division, DPW | <input type="checkbox"/> Temporary Closing |
| <input type="checkbox"/> Street Design Bureau, DPW | |
| <input type="checkbox"/> Street Maintenance Division, DPW | |
| <input type="checkbox"/> Traffic Engineering Division, DPW | |
| <input type="checkbox"/> Water and Sewerage Department | |
| <input type="checkbox"/> Detroit Thermal | |
| <input type="checkbox"/> International Transmission Company (ITC) | |

A petition drawing is attached. Property shown on the attached print is proposed to be changed as indicated. Kindly report (using the back of this sheet) the nature of your services, if any affected by the proposed change and the estimated costs of removing and rerouting such services (if necessary). If a response is not received after a second notice of proposed change has been issued DPW will make the determination to move forward with the petition.

Please return one copy to City Engineering Division, DPW within two weeks of the submittal date. Retain one copy and print for you file.

Ron Brundidge, Director, Department of Public Works

By: Richard Doherty, CED DPW
City Engineer

**TO: City Engineering Division, DPW
2 Woodward Ave., Suite 642
Detroit, Michigan 48226-3462
Survey Bureau: 313-224-3970**

Petition: _____

The proposed change in property (referred to on the other side of this sheet) would affect our services as follows:

- Not Involved
- Involved; but no objections to the property change.
- Involved; objection to the property change.
- Involved; the nature of our services and the estimated costs of removing and/or rerouting such services are:

Objections, Please leave a brief explanation for any objection or the nature of an estimated cost:

(Utility or City Department)

By

Title

Date

Area code – Telephone number

PETITION NO. 1174
 LADDER 4, LLC
 3396 VINEWOOD
 DETROIT, MICHIGAN 48208
 JAMES CADARIU
 PHONE NO. (313) 515-2017



W. GRAND BLVD 150 FT.WD.

VINEWOOD AVE. 66 FT.WD.



W. GRAND BLVD 169 FT.WD.

ASH ST. 50 FT.WD.



- REQUEST ENCROACHMENT
 (With Fencing & Seating)

(FOR OFFICE USE ONLY)

CARTO 19 C

B					
A					
DESCRIPTION	DRWN	CHKD	APPD	DATE	
REVISIONS					
DRAWN BY	SA	CHECKED	KSM		
DATE	01-04-20	APPROVED			

**REQUEST ENCROACHMENT
 INTO GRAND BLVD
 AT 3396 VINEWOOD**

**CITY OF DETROIT
 CITY ENGINEERING DIVISION
 SURVEY BUREAU**

JOB NO. 01-01

DRWG. NO. X 1174

PROVISIONS FOR ENCROACHMENT For Petition 1174

Detroit Water and Sewerage (DWSD) agree to the proposed encroachment subject to the fulfilling of the following provisions:

1. By approval of this petition the (DWSD) does not waive any of its rights to its facilities located in the right of way, and at all time, DWSD, its agents or employees, shall have the right to enter upon the right of way to maintain, repair, alter, service, inspect, or install its facilities. All costs incident to the damaging, dismantling, demolishing, removal and replacement of structures or other improvements herein permitted and incurred in gaining access to DWSD's facilities for maintenance, repairing, alteration, servicing or inspection caused by the encroachment shall be borne by the petitioner. All costs associated with gaining access to DWSD's facilities, which could normally be expected had the petitioner not encroached into the right of way shall be borne by DWSD.
2. DWSD requires a vertical clearance of 18 feet above grade for maintenance excess and repair.
3. All construction performed under this petition shall not be commenced until after five (5) days written notice to DWSD. Seventy-two (72) hours notice shall also be provided in accordance with P.A. 53 1974, as amended, utilizing the MISS DIG one call system.
4. Construction under this petition is subject to inspection and approval by DWSD forces. The cost of such inspection shall, at the discretion of DWSD, be borne by the petitioner.
5. If DWSD facilities located within the right of way shall break or be damaged as the result of any action on the part of the petitioner, then in such event the petitioner agrees to be liable for all costs incident to the repair, replacement or relocation of such broken or damaged DWSD facilities.
6. The petitioner shall hold DWSD harmless for any damage to the encroaching device constructed or installed under this petition, which may be caused by the failure of DWSD's facilities.



rd St

McKinley St

W Grand Blvd

Martin Luther King Jr Blvd

W Grand Blvd

Roosevelt St

rand Blvd

Vinewood St

W Grand Blvd

Roosevelt St

W Grand Blvd

Vinewood St

W Grand Blvd

Ash St

Vinewood St

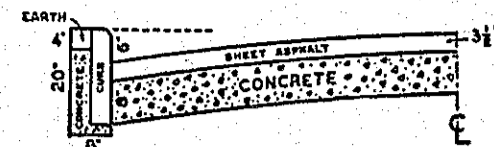
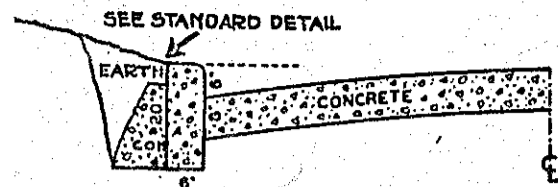
Ash St

ubbard St

Ash St

W Grand Blvd

CROSS SECTIONS



ONE COURSE CONCRETE WITH CONCRETE CURB

SHEET ASPHALT ON CONCRETE WITH STONE CURB

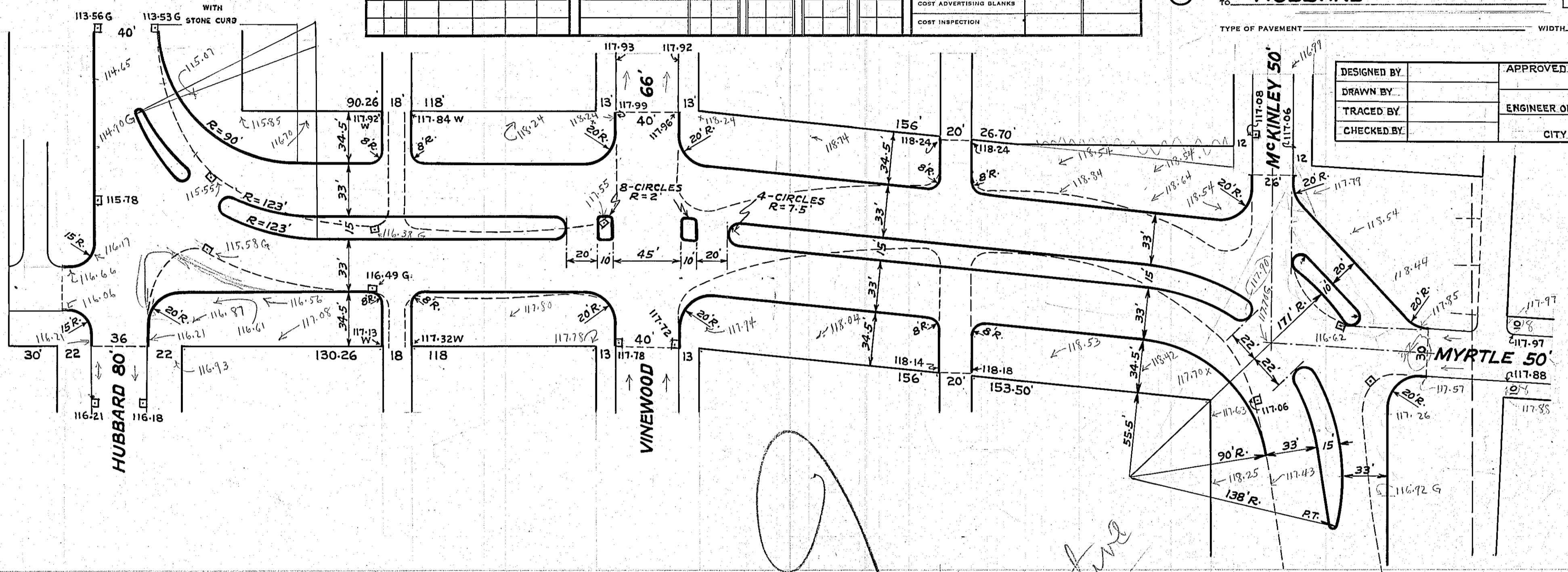
CIRCLES						QUANTITIES	LOTS	CITY	LOTS	CITY	HOR. SCALE 1" = 50'		BOOK PAGE	
AT	NO	Δ	RADIUS	TANG.	ARC						SEG.	VER SCALE	DATE	Apr. 13, 1938
											PLAN	PROFILE	COMPUTED	
											CHECKED	GRADE	CHECKED	
											LOTS	2L	LENGTH	
											CITY	2L	LENGTH	
											TOTAL	2L	LENGTH	
													LOTS	CITY
											COST ADVERTISING BLANKS			
											COST INSPECTION			

DEPARTMENT OF PUBLIC WORKS
CITY ENGINEER'S OFFICE --- DIVISION OF PAVING DESIGN

STREET PAVING PLAN

NAME OF STREET: **WEST GRAND BLVD.**
FROM: **MCKINLEY-MYRTLE**
TO: **HUBBARD**

TYPE OF PAVEMENT: _____ WIDTH: _____



DESIGNED BY	APPROVED
DRAWN BY	ENGINEER OF
TRACED BY	CITY E
CHECKED BY	

Not effective in 1938



C.S. 1086 -
 C.R. 265 -
 P.R.V. = 1645 sq. yds.
 Recwp. 580 sq. yds.

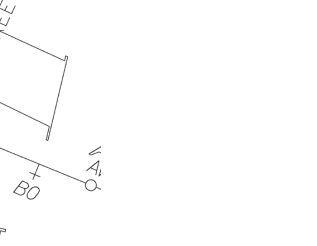
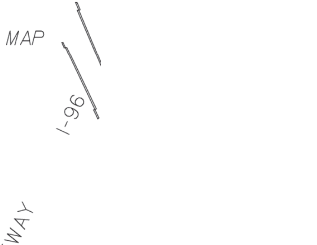
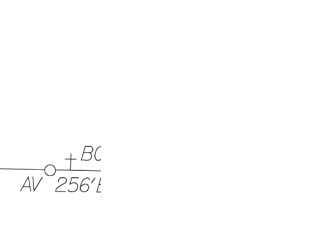
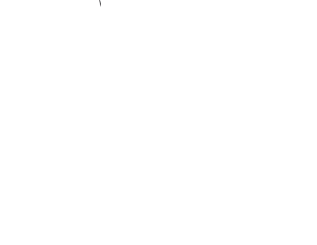
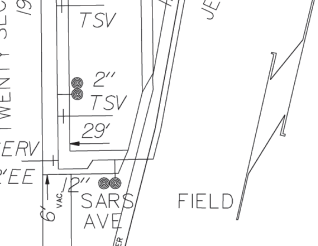
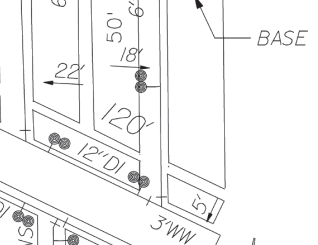
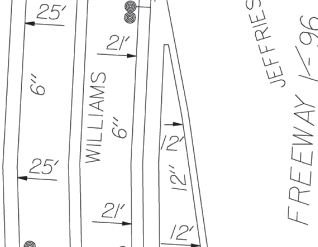
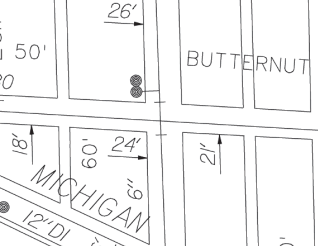
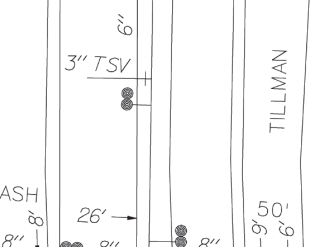
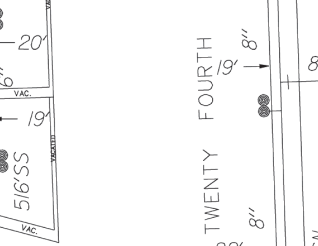
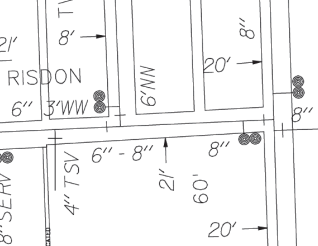
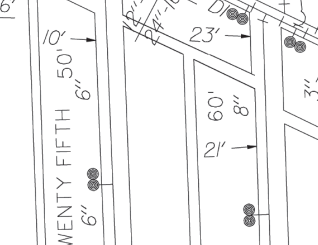
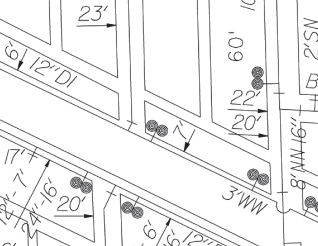
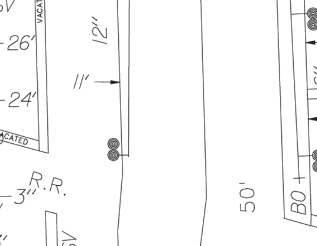
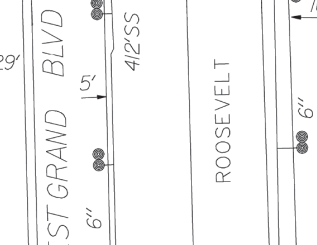
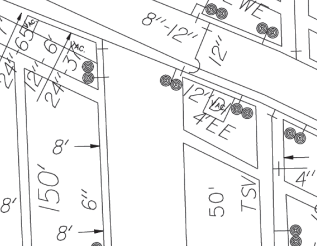
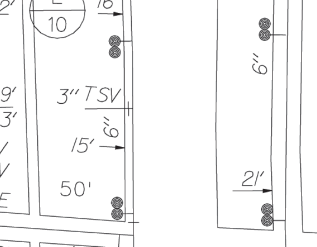
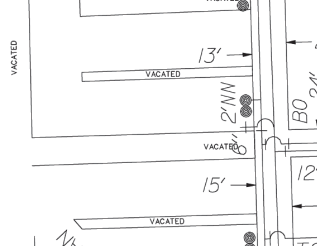
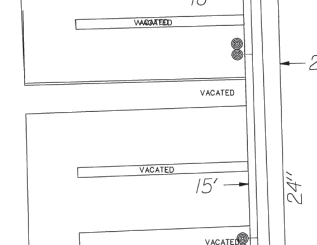
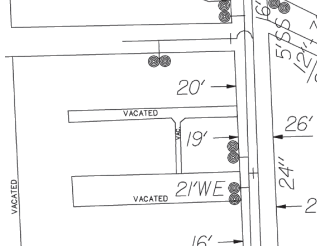
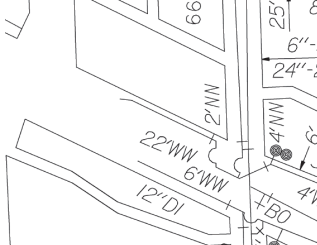
Total cost: 10327.00

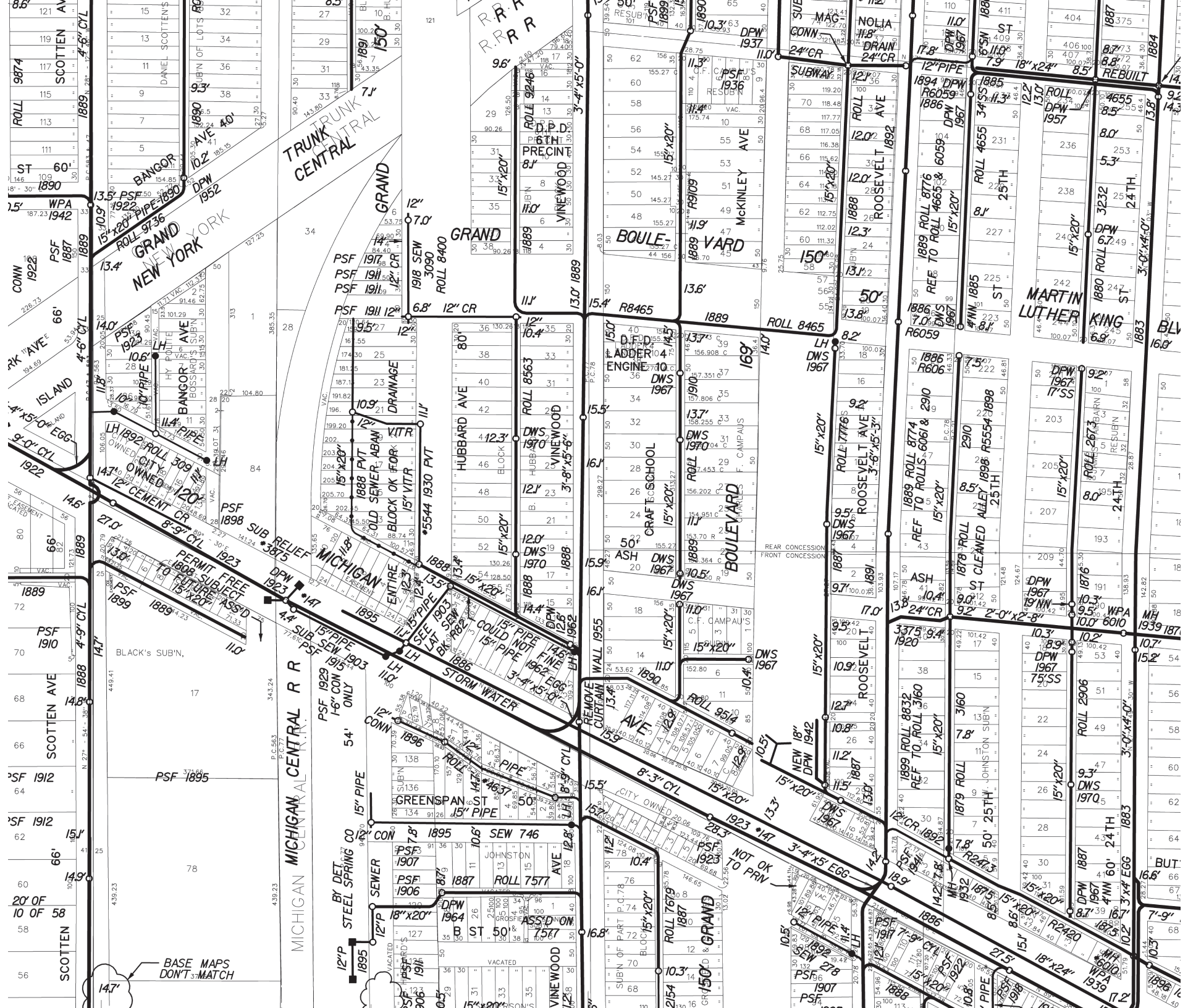
84304

SECTION-29
 of
 33 SECTIONS
 HUBBARD TO MYRTLE.

GRAND BLVD.

1-30 10-25-30 322-8





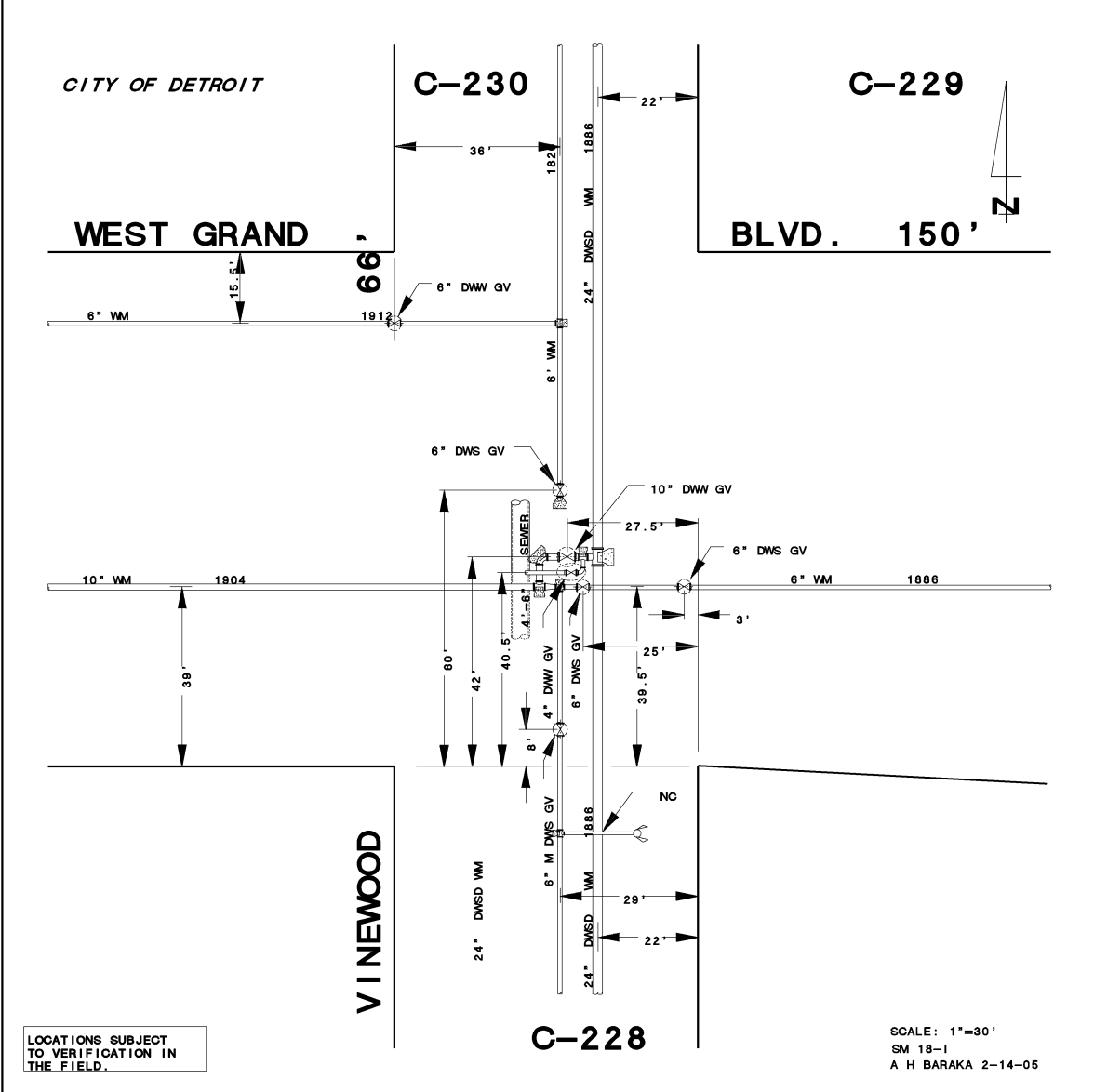
BASE MAPS DON'T MATCH

MICHIGAN CENTRAL R.R.

TRUNK CENTRAL

NEW YORK

SCOTTEN AVE
GRAND AVE
BANGOR AVE
MICHIGAN AVE
HUBBARD AVE
VINEWOOD AVE
ROOSEVELT AVE
ASH AVE
WALL AVE
GREENSPAN AVE
ST 50
ST 54
ST 58
ST 60
ST 62
ST 64
ST 66
ST 68
ST 70
ST 72
ST 74
ST 76
ST 78
ST 80
ST 82
ST 84
ST 86
ST 88
ST 90
ST 92
ST 94
ST 96
ST 98
ST 100
ST 102
ST 104
ST 106
ST 108
ST 110
ST 112
ST 114
ST 116
ST 118
ST 120
ST 122
ST 124
ST 126
ST 128
ST 130
ST 132
ST 134
ST 136
ST 138
ST 140
ST 142
ST 144
ST 146
ST 148
ST 150
ST 152
ST 154
ST 156
ST 158
ST 160
ST 162
ST 164
ST 166
ST 168
ST 170
ST 172
ST 174
ST 176
ST 178
ST 180
ST 182
ST 184
ST 186
ST 188
ST 190
ST 192
ST 194
ST 196
ST 198
ST 200
ST 202
ST 204
ST 206
ST 208
ST 210
ST 212
ST 214
ST 216
ST 218
ST 220
ST 222
ST 224
ST 226
ST 228
ST 230
ST 232
ST 234
ST 236
ST 238
ST 240
ST 242
ST 244
ST 246
ST 248
ST 250
ST 252
ST 254
ST 256
ST 258
ST 260
ST 262
ST 264
ST 266
ST 268
ST 270
ST 272
ST 274
ST 276
ST 278
ST 280
ST 282
ST 284
ST 286
ST 288
ST 290
ST 292
ST 294
ST 296
ST 298
ST 300
ST 302
ST 304
ST 306
ST 308
ST 310
ST 312
ST 314
ST 316
ST 318
ST 320
ST 322
ST 324
ST 326
ST 328
ST 330
ST 332
ST 334
ST 336
ST 338
ST 340
ST 342
ST 344
ST 346
ST 348
ST 350
ST 352
ST 354
ST 356
ST 358
ST 360
ST 362
ST 364
ST 366
ST 368
ST 370
ST 372
ST 374
ST 376
ST 378
ST 380
ST 382
ST 384
ST 386
ST 388
ST 390
ST 392
ST 394
ST 396
ST 398
ST 400
ST 402
ST 404
ST 406
ST 408
ST 410
ST 412
ST 414
ST 416
ST 418
ST 420
ST 422
ST 424
ST 426
ST 428
ST 430
ST 432
ST 434
ST 436
ST 438
ST 440
ST 442
ST 444
ST 446
ST 448
ST 450
ST 452
ST 454
ST 456
ST 458
ST 460
ST 462
ST 464
ST 466
ST 468
ST 470
ST 472
ST 474
ST 476
ST 478
ST 480
ST 482
ST 484
ST 486
ST 488
ST 490
ST 492
ST 494
ST 496
ST 498
ST 500
ST 502
ST 504
ST 506
ST 508
ST 510
ST 512
ST 514
ST 516
ST 518
ST 520
ST 522
ST 524
ST 526
ST 528
ST 530
ST 532
ST 534
ST 536
ST 538
ST 540
ST 542
ST 544
ST 546
ST 548
ST 550
ST 552
ST 554
ST 556
ST 558
ST 560
ST 562
ST 564
ST 566
ST 568
ST 570
ST 572
ST 574
ST 576
ST 578
ST 580
ST 582
ST 584
ST 586
ST 588
ST 590
ST 592
ST 594
ST 596
ST 598
ST 600
ST 602
ST 604
ST 606
ST 608
ST 610
ST 612
ST 614
ST 616
ST 618
ST 620
ST 622
ST 624
ST 626
ST 628
ST 630
ST 632
ST 634
ST 636
ST 638
ST 640
ST 642
ST 644
ST 646
ST 648
ST 650
ST 652
ST 654
ST 656
ST 658
ST 660
ST 662
ST 664
ST 666
ST 668
ST 670
ST 672
ST 674
ST 676
ST 678
ST 680
ST 682
ST 684
ST 686
ST 688
ST 690
ST 692
ST 694
ST 696
ST 698
ST 700
ST 702
ST 704
ST 706
ST 708
ST 710
ST 712
ST 714
ST 716
ST 718
ST 720
ST 722
ST 724
ST 726
ST 728
ST 730
ST 732
ST 734
ST 736
ST 738
ST 740
ST 742
ST 744
ST 746
ST 748
ST 750
ST 752
ST 754
ST 756
ST 758
ST 760
ST 762
ST 764
ST 766
ST 768
ST 770
ST 772
ST 774
ST 776
ST 778
ST 780
ST 782
ST 784
ST 786
ST 788
ST 790
ST 792
ST 794
ST 796
ST 798
ST 800
ST 802
ST 804
ST 806
ST 808
ST 810
ST 812
ST 814
ST 816
ST 818
ST 820
ST 822
ST 824
ST 826
ST 828
ST 830
ST 832
ST 834
ST 836
ST 838
ST 840
ST 842
ST 844
ST 846
ST 848
ST 850
ST 852
ST 854
ST 856
ST 858
ST 860
ST 862
ST 864
ST 866
ST 868
ST 870
ST 872
ST 874
ST 876
ST 878
ST 880
ST 882
ST 884
ST 886
ST 888
ST 890
ST 892
ST 894
ST 896
ST 898
ST 900
ST 902
ST 904
ST 906
ST 908
ST 910
ST 912
ST 914
ST 916
ST 918
ST 920
ST 922
ST 924
ST 926
ST 928
ST 930
ST 932
ST 934
ST 936
ST 938
ST 940
ST 942
ST 944
ST 946
ST 948
ST 950
ST 952
ST 954
ST 956
ST 958
ST 960
ST 962
ST 964
ST 966
ST 968
ST 970
ST 972
ST 974
ST 976
ST 978
ST 980
ST 982
ST 984
ST 986
ST 988
ST 990
ST 992
ST 994
ST 996
ST 998
ST 1000



CITY OF DETROIT

C-230

C-229

WEST GRAND

BLVD. 150'



VINEWOOD

C-228

SEE SM 18-1

LOCATIONS SUBJECT TO VERIFICATION IN THE FIELD.

SCALE: 1"=30'
SM 18-1
A H BARAKA 2-14-05