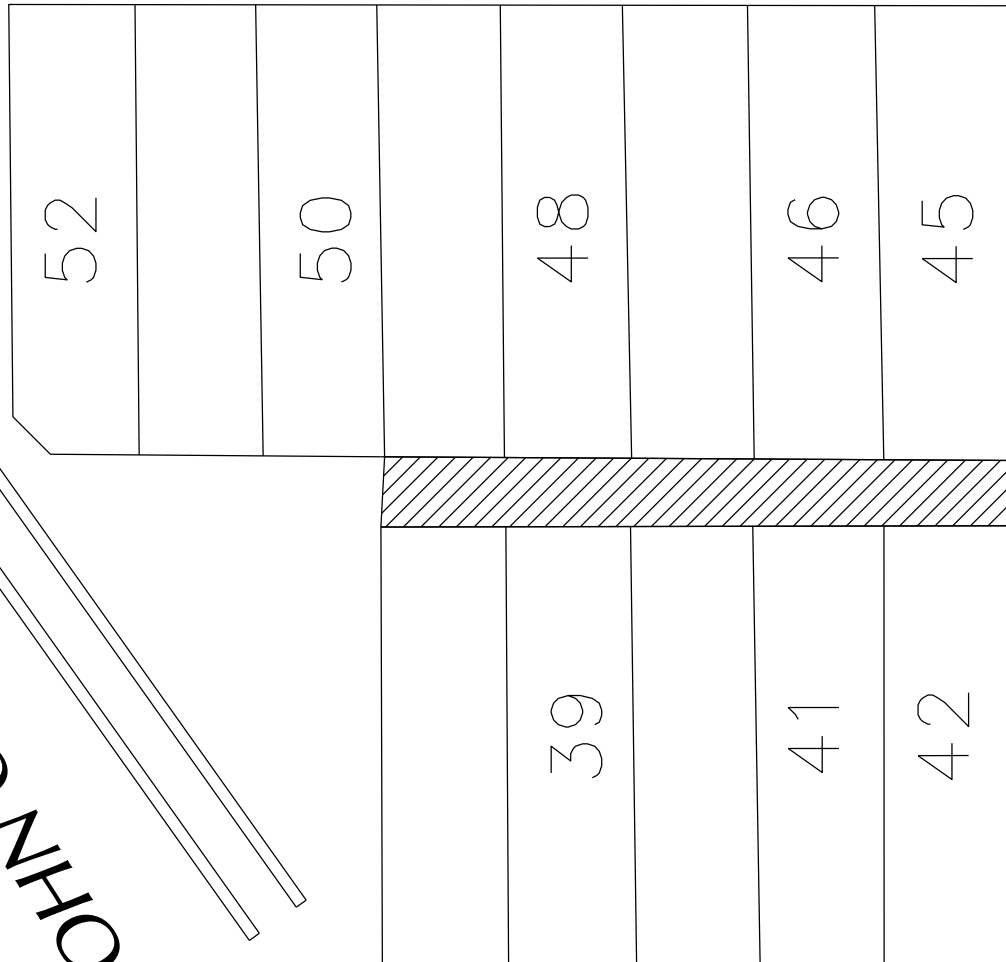


PETITION NO. 1165
 BOUNCE BACK DETROIT,
 2641 CLEMENTS ST.
 DETROIT, MICHIGAN 48238
 JEFFREY JONES
 PHONE NO. (313) 556-4406



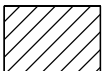
PASADENA AVE. 50 FT.WD.

THOMSON AVE. 62.38 FT. WD.



JOHN C. LODGE

GRAND AVE. 50 FT.WD.



- CONVERSION TO EASEMENT

(FOR OFFICE USE ONLY)

CARTO 34 D

B					
A					
DESCRIPTION		DRWN	CHKD	APPD	DATE
REVISIONS					
DRAWN BY SA		CHECKED KSM			
DATE 01-07-20		APPROVED			

CONVERSION TO EASEMENT
 THE EAST/WEST PUBLIC ALLEY, 18 FT. WD.
 IN THE BLOCK BOUND BY
 PASADENA AVE., THOMSON AVE.,
 GRAND AVE. AND JOHN C. LODGE.

CITY OF DETROIT
 CITY ENGINEERING DIVISION
 SURVEY BUREAU

JOB NO. 01-01

DRWG. NO. X 1165