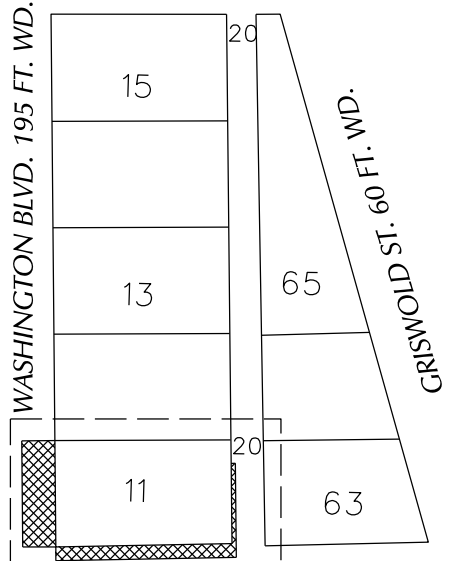


PETITION NO. 1157  
 KAMPER AND STEVENS I LDHA LLC,  
 1117 GRISWOLD ST., SUITE 1416.  
 DETROIT, MICHIGAN 48226  
 MELISSA CORRIGAN  
 PHONE NO. (313) 963-6118

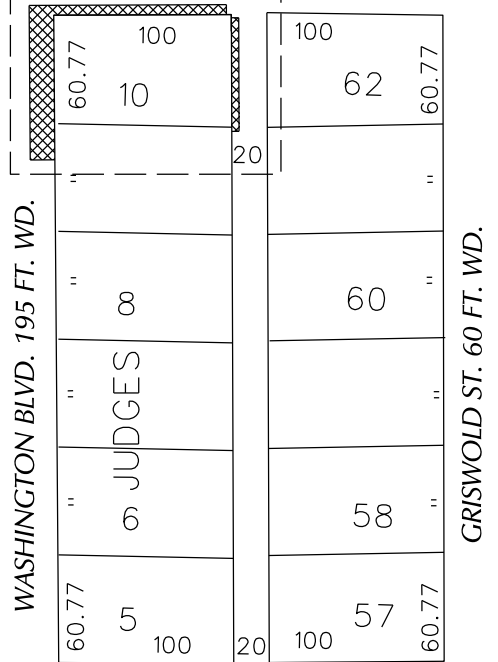
**"REVISION-A-"**



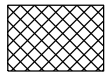
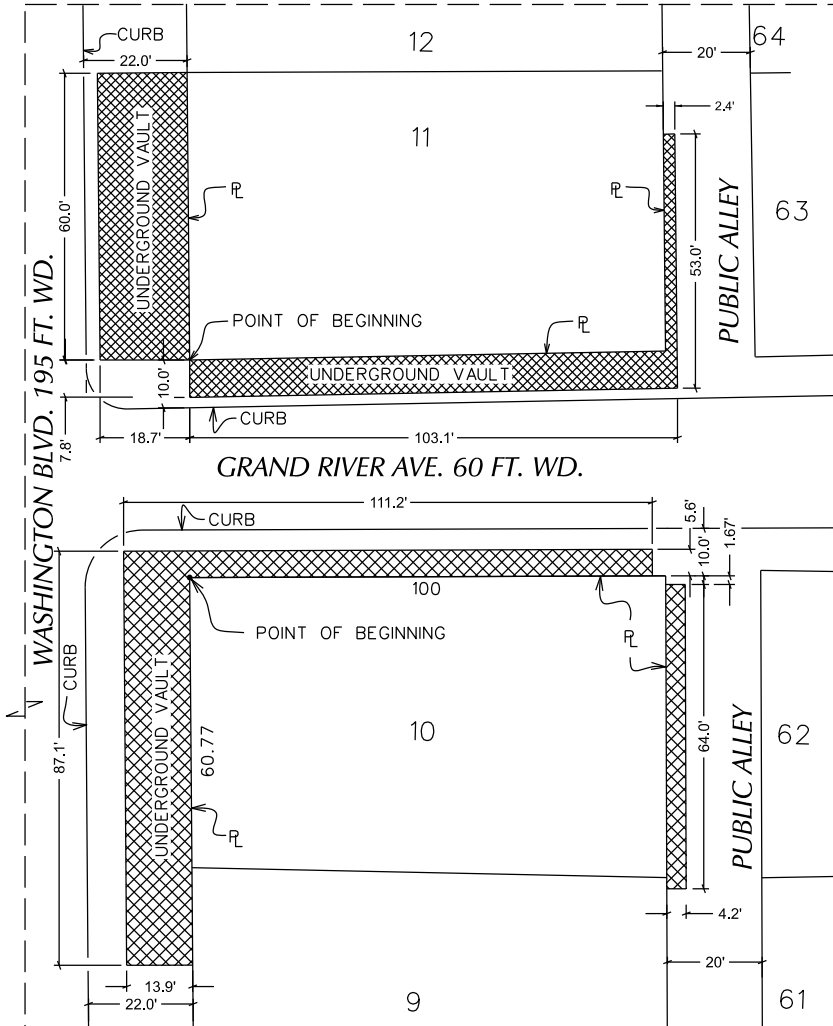
CLIFFORD ST. 60 FT. WD.



GRAND RIVER AVE. 60 FT. WD.



STATE ST. 60 FT. WD.



- REQUEST ENCROACHMENT

(FOR OFFICE USE ONLY)

CARTO 28 B

|                    |              |                 |             |             |             |
|--------------------|--------------|-----------------|-------------|-------------|-------------|
| <b>B</b>           |              |                 |             |             |             |
| <b>A</b>           | NEW REVISION | SA              | KSM         | KSM         | 2/21/20     |
| <b>DESCRIPTION</b> |              | <b>DRWN</b>     | <b>CHKD</b> | <b>APPD</b> | <b>DATE</b> |
| <b>REVISIONS</b>   |              |                 |             |             |             |
| <b>DRAWN BY</b>    | SA           | <b>CHECKED</b>  |             | KSM         |             |
| <b>DATE</b>        | 02-06-20     | <b>APPROVED</b> |             |             |             |

**REQUEST ENCROACHMENT  
 INTO GRAND RIVER AVE.  
 AT 1410 & 1258 WASHINGTON BLVD.**

**CITY OF DETROIT  
 CITY ENGINEERING DIVISION  
 SURVEY BUREAU**

**JOB NO. 01-01**

**DRWG. NO. 1157**