

TO: City Engineering Division, DPW  
2 Woodward Ave., Suite 642  
Detroit, MI 48226-3462  
Survey Bureau: 313-224-3970

Petition No. 998

The proposed change in property (referred to above) would affect our services as follows:

- (X) Involved; **have objection** to request for Berm Use (For Parking Only) into Canyon Ave at 18401 Warren Ave. as shown on drawing no. X998 dated 09/26/2019 and revised on 02/04/2020. If the petitioner decides to resubmit the request, it should be noted that:
- 1) Traffic Engineering Division (TED) will require the petitioner to provide detailed plans of the proposed parking area encroachment before the petition can be approved and the request shall also be in accordance with TED Berm Parking Guidelines.
  - 2) Requestor shall be responsible, at his/her expense, to construct/modify the berm surface as per City standards to allow for entry/exit.
  - 3) Requestor shall also be responsible for maintaining the berm surface and removal of snow from the berm area, at his/her expense.
  - 4) The Requestor shall also be responsible, at his/her expense, to install/maintain continuous concrete stoppers (painted yellow) for separation of vehicular and pedestrian usage.
  - 5) The requestor shall be responsible, at his/her expense to install/maintain parking control signs and pavement markings associated with the berm area at his/her expense
  - 6) City shall also reserve the right to revoke the approval of berm parking if it is determined to be in the best interest of the City of Detroit or in case of requestor's failure to comply with the terms and conditions stipulated in the approval of the berm parking.
  - 7) The owner/requestor should indemnify City for any potential claims by entering in an indemnification agreement with City of Detroit Law Department.

Traffic Engineering Division - DPW  
(Utility or City Department)

Ashok Patel  
By

*Sunny Jacob*

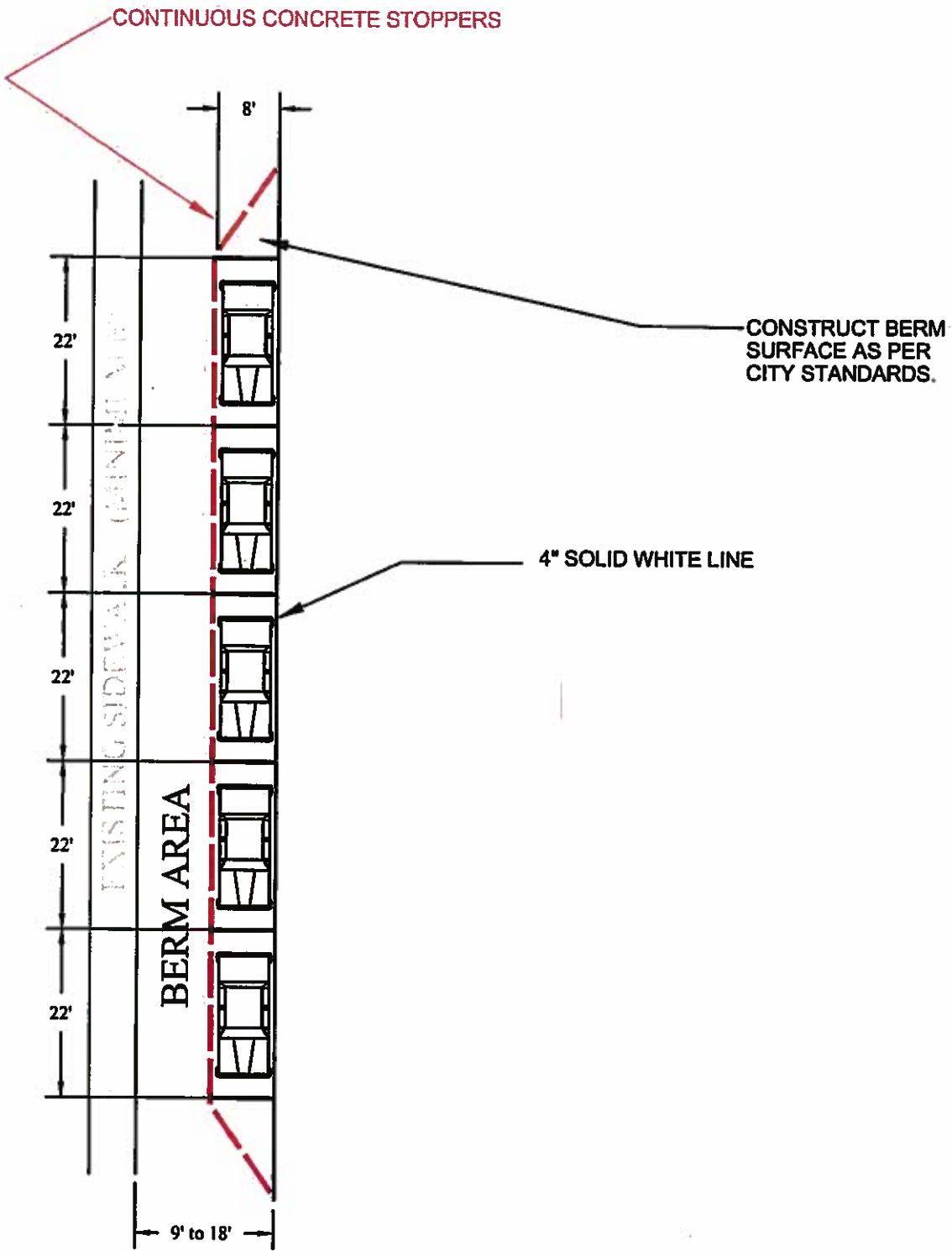
City Traffic Engineer  
Title

February 10, 2020  
Date

313 224-1610  
Area code-Telephone number

AA/aa

T:\LAPPIN\Painting Berm\Painting Berm SK 1 PP.dwg, 6/16/2009 2:13:31 PM, Kyocera KM-C2525E IC, 1:240



NOTE: ON STREET PARKING  
WILL NOT BE PERMITTED.

CITY OF DETROIT  
DEPARTMENT OF PUBLIC WORKS  
TRAFFIC ENGINEERING DIVISION

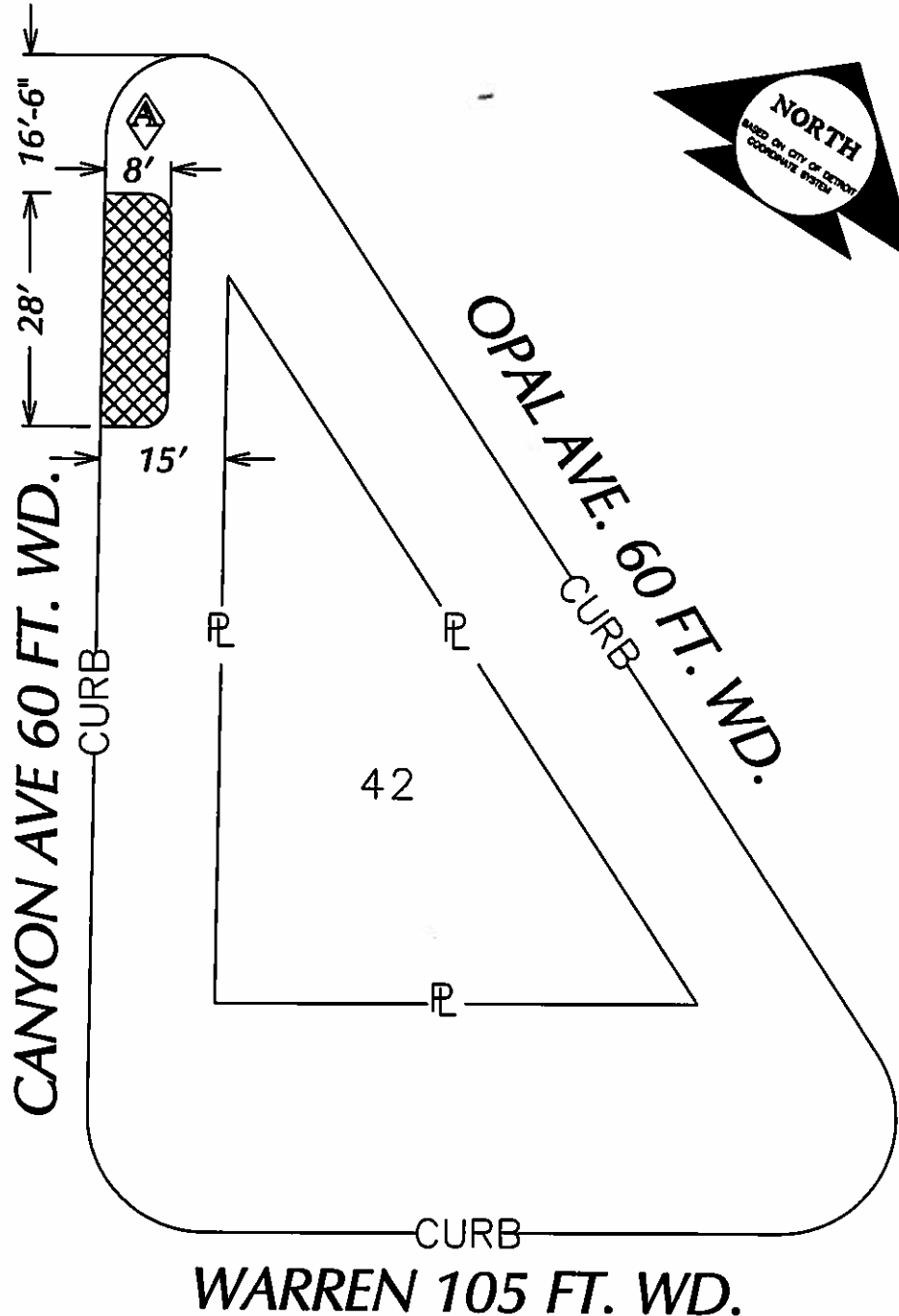
### PARKING BERM FOR PARALLEL PARKING

DRAWN : J. LAPPIN  
SCALE : 1" = 20'  
DATE : 05 - 13 - 2009

SKETCH #1

PETITION NO. 998  
 BIKE TECH DETROIT  
 18401 E. WARREN AVE.  
 DETROIT, MICHIGAN 48236  
 BRIAN R. PIKIELEK  
 PHONE NO. (313)-884-2453

**"REVISION-A"**



 - REQUESTED BERM USE  
 (For Parking Only)

(FOR OFFICE USE ONLY)

CARTO 107 B

B				
A	REVISED: CHANGING THE PARKING WIDTH FROM 7 FEET TO 8 FEET	SA	KSM	JD 2/4/2020
	DESCRIPTION	DRAWN	CHECKED	APPROVED
	REVISIONS			
DRAWN BY	SA	CHECKED	KSM	
DATE	09-26-19	APPROVED		

**REQUEST BERM USE  
 (For Parking Only)  
 INTO CANYON AVE  
 AT 18401 WARREN AVE.**

CITY OF DETROIT CITY ENGINEERING DIVISION SURVEY BUREAU	
JOB NO.	01-01
DRWG. NO.	X 998