

City of Detroit
OFFICE OF THE CITY CLERK

Janice M. Winfrey
City Clerk

Vivian A. Hudson
Deputy City Clerk

DEPARTMENTAL REFERENCE COMMUNICATION

Wednesday, July 24, 2019

To: The Department or Commission Listed Below

From: Janice M. Winfrey, Detroit City Clerk

The following petition is herewith referred to you for report and recommendation to the City Council.

In accordance with that body's directive, kindly return the same with your report in duplicate within four (4) weeks.

PLANNING AND DEVELOPMENT DEPARTMENT DPW - CITY ENGINEERING DIVISION

998 *Bike Tech Detroit, request for a parking easement to be created alongside the Bike Tech store located at 18401 Warren Ave.*

998

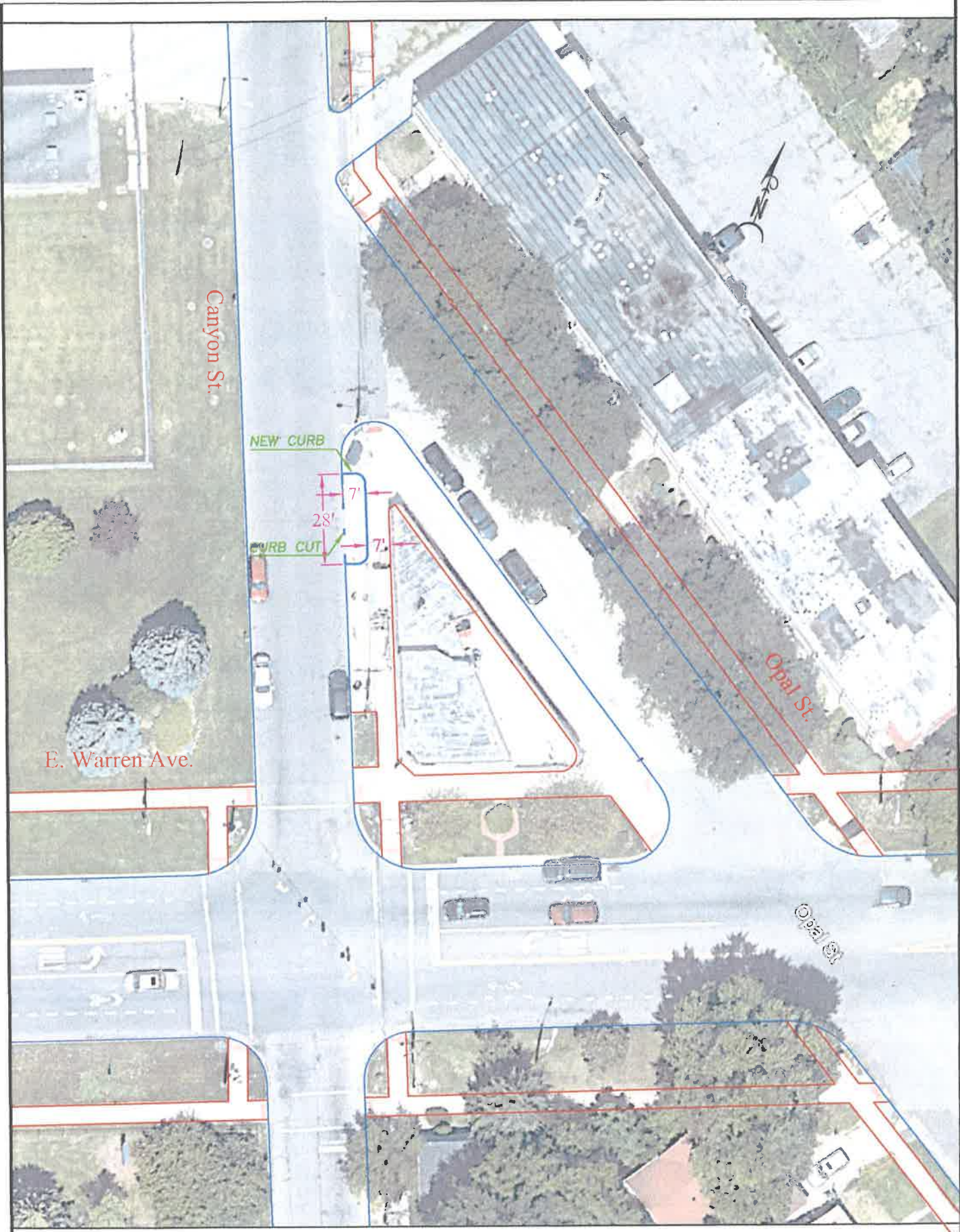
To the Honorable City Council,

This letter is being sent in regard to a need for a parking easement to be created alongside Bike Tech bike shop, represented by the owner, Brian R. Pikielek. This easement would parallel the shop, on the intersection of opal and canyon, across from Balduck Park. An illustration has been provided to clarify the location. The new easement would make commuting for the owner and employees more convenient, as well as making the unloading and loading of customers bikes safer for both parties. We've found the lack of an easement has created congestion and hurt the store's efficiency of the aforementioned loading and unloading. If you would approve this easement we would complete it to the best of our ability within 60-90 days, weather permitting.

Sincerely,
Brian R. Pikielek

biketechdetroit@gmail.com.

Bike Tech
18401 East Warren ave
Detroit, Mi.
48236



Canyon St

E. Warren Ave.

Opal St.

Opal St

NEW CURB

CURB CUT

7'

28'

7'

CITY OF DETROIT
 DEPARTMENT OF PUBLIC WORKS
 TRAFFIC ENGINEERING DIVISION

CANYON ST.
E. WARREN AVE.

DRAWN : DUC DUONG
 SCALE : 1" = 40'
 DATE : 07 - 01 - 2019

SHEET 01 OF 01

2019-07-24

998

998 *Petition of Bike Tech Detroit,
request for a parking easement to be
created alongside the Bike Tech store
located at 18401 Warren Ave.*

REFERRED TO THE FOLLOWING DEPARTMENT(S)

PLANNING AND DEVELOPMENT DEPARTMENT DPW -
CITY ENGINEERING DIVISION