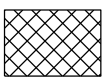
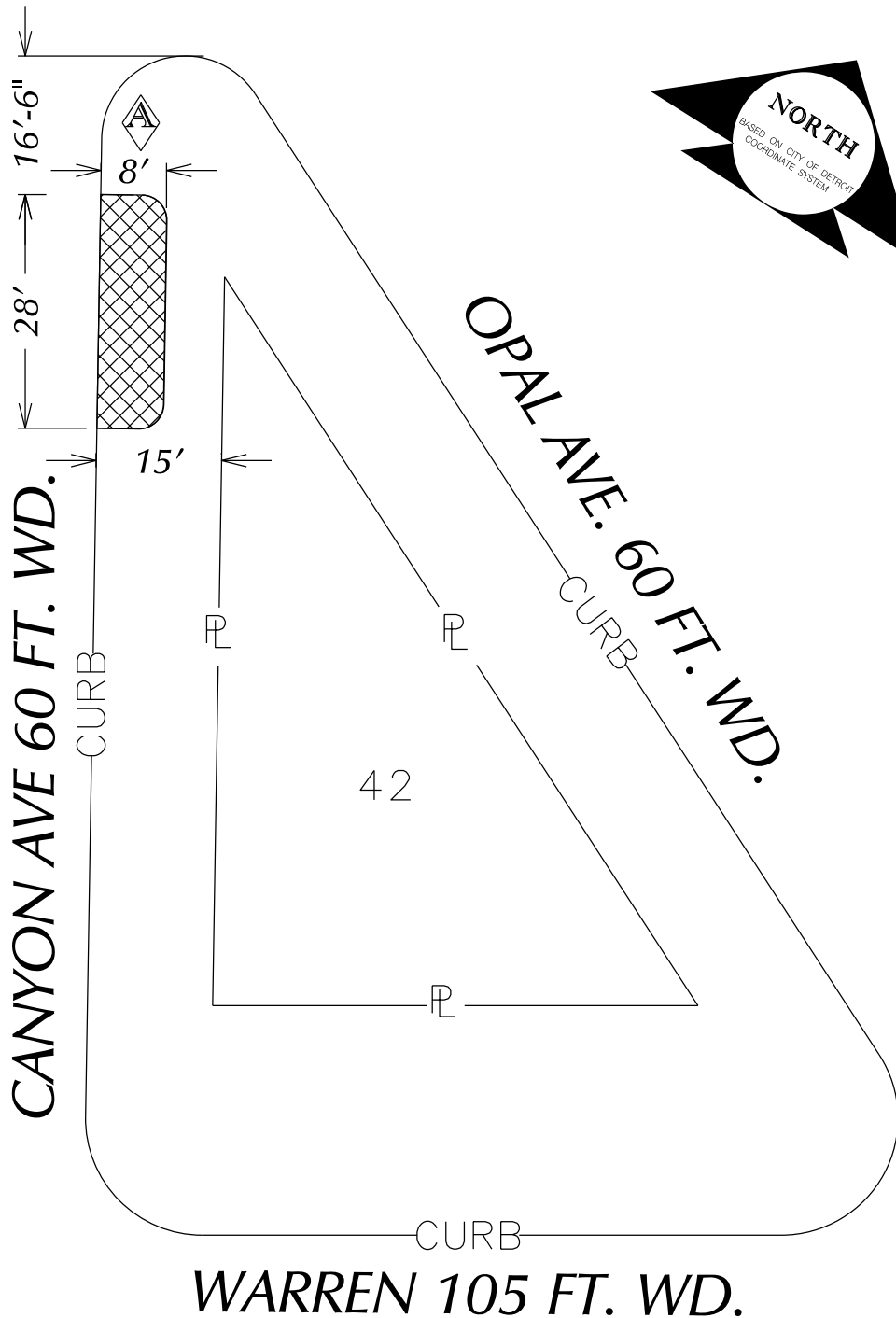


PETITION NO. 998
 BIKE TECH DETROIT
 18401 E. WARREN AVE.
 DETROIT, MICHIGAN 48236
 BRIAN R. PIKIELEK
 PHONE NO. (313)-884-2453

"REVISION-A"



- REQUESTED BERM USE
 (For Parking Only)

(FOR OFFICE USE ONLY)

CARTO 107 B

B					
A	REVISED: CHANGING THE PARKING WIDTH FROM 7 FEET TO 8 FEET	SA	KSM	JD	2/4/2020
DESCRIPTION		DRWN	CHKD	APPD	DATE
REVISIONS					
DRAWN BY	SA	CHECKED	KSM		
DATE	09-26-19	APPROVED			

**REQUEST BERM USE
 (For Parking Only)
 INTO CANYON AVE
 AT 18401 WARREN AVE.**

**CITY OF DETROIT
 CITY ENGINEERING DIVISION
 SURVEY BUREAU**

JOB NO. 01-01

DRWG. NO. X 998