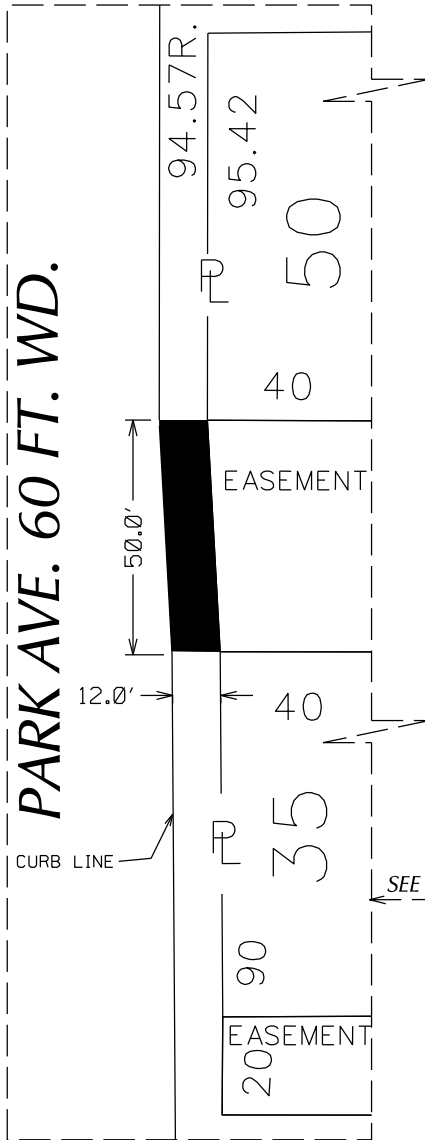


PETITION NO. 968
 GLOBAL RESOURCE CENTER LLC.
 C/O GIFFELS WEBSTER
 28 W. ADAMS, SUITE 1200
 DETROIT, MICHIGAN 48226
 MICHAEL MARKS
 PHONE NO. (313) 962-4442



W. MONTCALM 50 FT. WD.

40	"	40	18	00	22	40	"	"	40	5	117.68	
10		8	00	07	02	40	"	"	40	50	2	50.12
15		93.05	15	08	15	VAC.			4	50	114.56	50.12
15		95.42	15	04	15				3	50	111.44	50.12
40	"	48	40	50	40				4	50	123.25	51.19
40	"	46	40	50	40				3	50	120.07	51.12
40	"	44	40	50	40				3	50	116.95	47.61
40	"	43	40	50	40				3	50	113.99	47.61
40	"	43	40	50	40				3	50	111.02	47.61
40	"	43	40	50	40				3	50	110.40	52.63
40	"	43	40	50	40				3	50	107.12	52.63
40	"	43	40	50	40				3	50	103.85	52.63

W COLUMBIA ST. 50 FT. WD.

EASEMENT 9-21-88 J.C.C. PGS. 2309-10

W. ELIZABETH ST. 60 FT. WD.

WOODWARD AVE. 120 FT. WD.

- REQUEST ENCROACHMENT FOR NON - STANDARD PAVEMENT

(FOR OFFICE USE ONLY)

CARTO 29 E

B					
A					
DESCRIPTION		DRWN	CHKD	APPD	DATE
REVISIONS					
DRAWN BY	SA	CHECKED		KSM	
DATE	07-08-19	APPROVED			

REQUEST ENCROACHMENT INTO THE PARK AVE. (60 FEET WIDE) ACROSS THE ENTIRE OF W. COLUMBIA ST. (50 FEET WIDE)

CITY OF DETROIT
 CITY ENGINEERING DIVISION
 SURVEY BUREAU

JOB NO. 01-01
 DRWG. NO. X 968