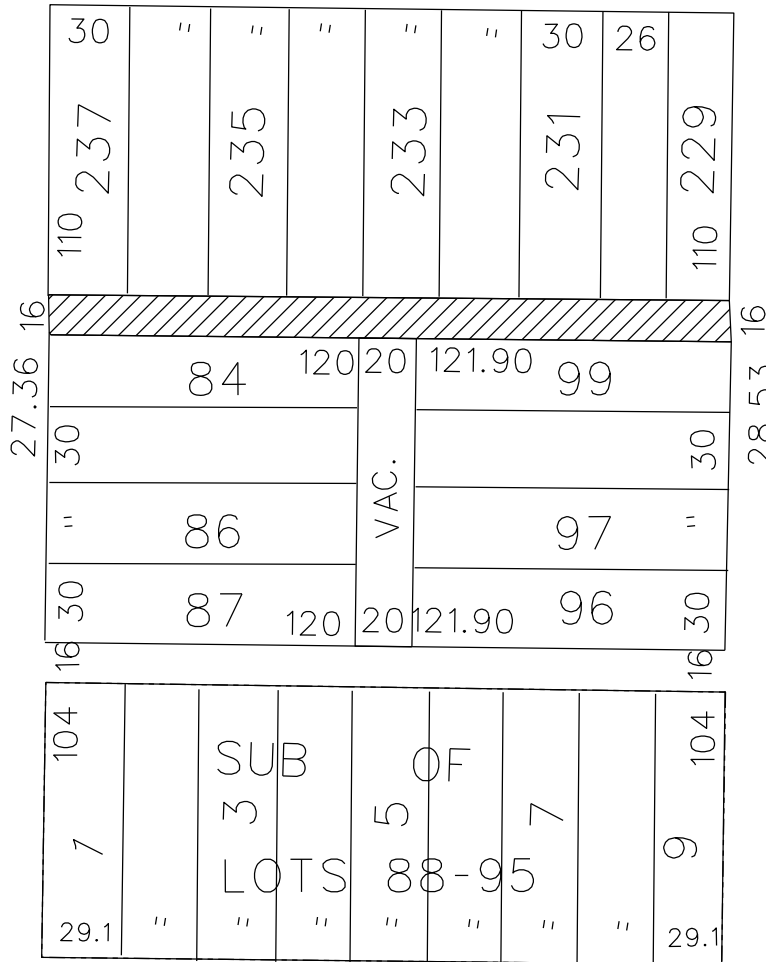


PETITION NO. 965  
 STONEFIELD ENGINEERING AND DESIGN  
 607 SHELBY ST. SUITE 200  
 DETROIT, MICHIGAN 48226  
 MITCHELL HARVEY  
 PHONE NO. (248) 247-1115



**EAST GRAND BOULEVARD 150 FT. WD.**

**ST. ANTOINE ST. 50 FT. WD.**



**OAKLAND AVE. 50 FT. WD.**

**MILWAUKEE AVE. 60 FT. WD.**



- CONVERSION TO EASEMENT

(FOR OFFICE USE ONLY)

CARTO 31 F

B					
A					
DESCRIPTION		DRWN	CHKD	APPD	DATE
REVISIONS					
DRAWN BY		CHECKED		KSM	
SA					
DATE		APPROVED			
07-01-19					

CONVERSION TO EASEMENT  
 THE EAST/WEST PUBLIC ALLEY, 16 FT. WD.  
 SOUTH OF EAST GRAND BOULEVARD  
 IN THE BLOCK BOUND BY  
 ST. ANTOINE ST., EAST GRAND BOULEVARD,  
 OAKLAND AVE. AND MILWAUKEE AVE.

CITY OF DETROIT CITY ENGINEERING DIVISION SURVEY BUREAU	
JOB NO.	01-01
DRWG. NO.	X 965