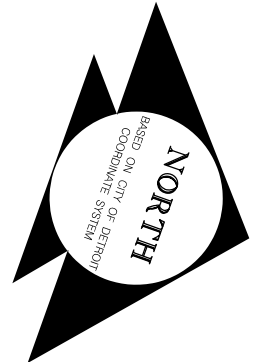
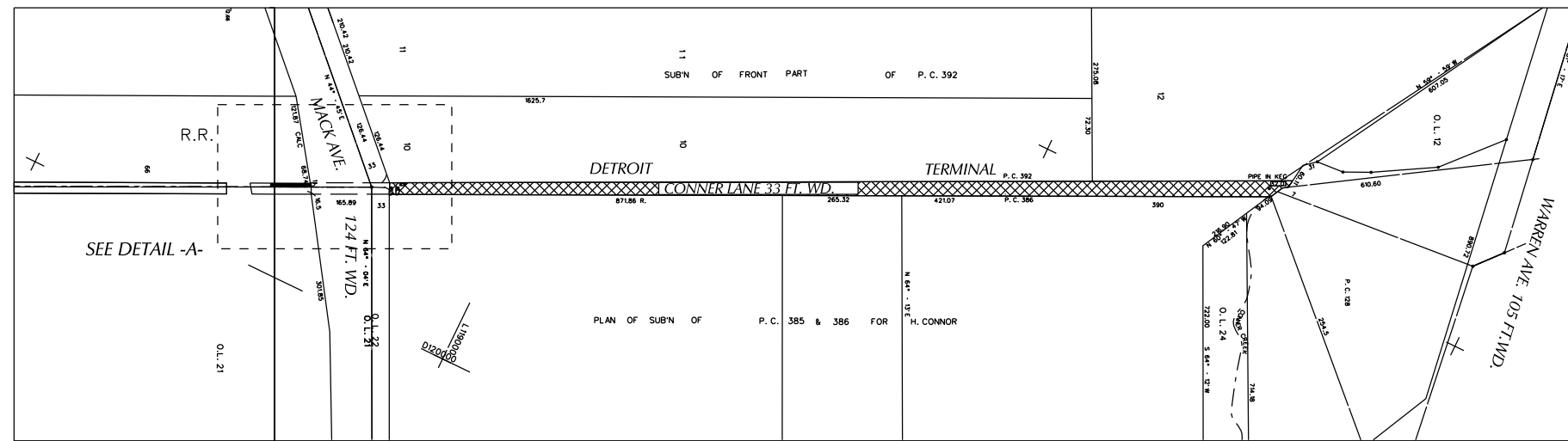
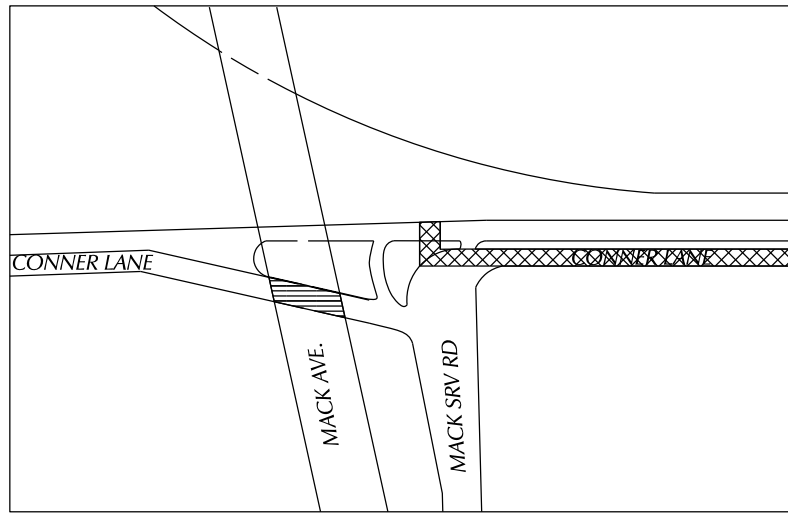
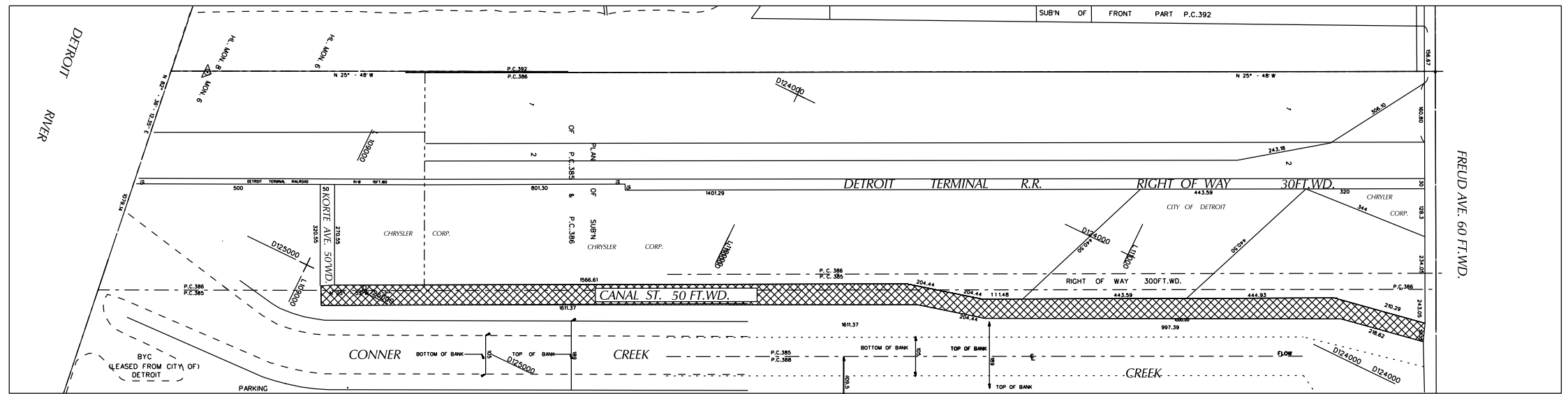
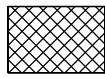
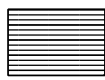

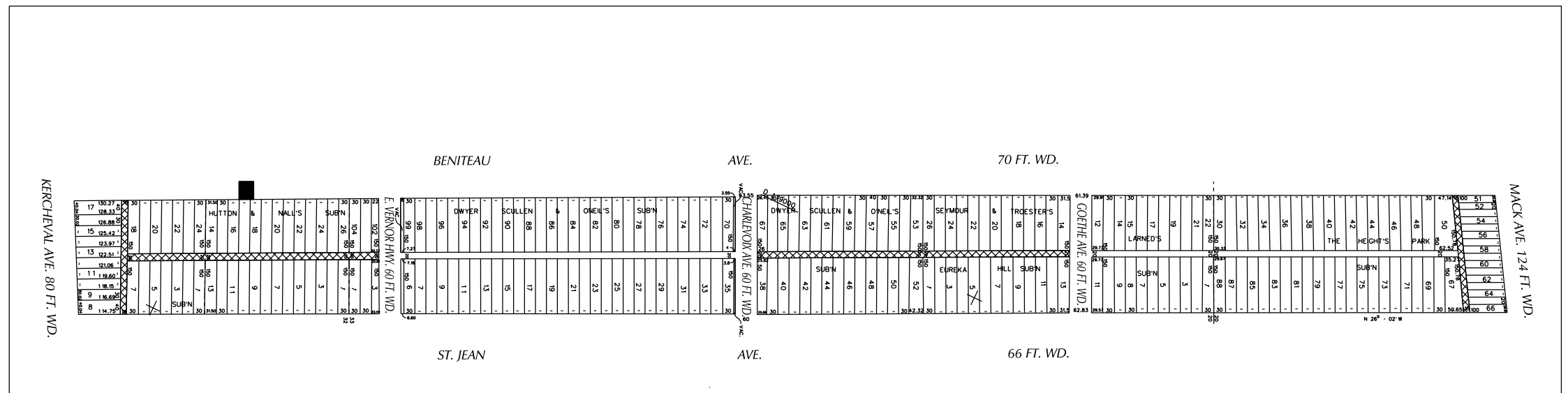


PETITION NO. 867  
 DPW - CITY ENGINEERING  
 (C/O KEITH MCCRARY)  
 COLEMAN A. YOUNG  
 MUNICIPAL CENTER, SUITE 642  
 DETROIT, MICHIGAN 48226  
 PHONE NO. (313) 224-3970



DETAIL -A-

-  - REQUESTED OUTRIGHT VACATION
-  - REQUEST ACCESS DRIVE ENCROACHMENT
-  - REQUEST ENCROACHMENT



(FOR OFFICE USE ONLY)

CARTO  
 54G 54F 54A 55F 55A 56F 62C 62D 61C

<b>B</b>				
<b>A</b>				
DESCRIPTION	DRWN	CHKD	APPD	DATE
REVISIONS				
DRAWN BY	CHECKED			
DATE	APPROVED			
06-03-19	SA			

# REQUEST TO OUTRIGHT VACATE THE FOLLOWING PUBLIC RIGHT OF WAYS :  
 - CONNER LANE FROM MACK AVE. TO ITS NORTHERN TERMINUS.  
 - CANAL STREET FROM FREUD AVE. TO ITS SOUTHERN TERMINUS.  
 - EAST/WEST ALLEY SOUTH OF MACK AVE. AND WEST OF ST. JEAN.  
 - REMAINING 50 FEET OF THE EAST/WEST ALLEY NORTH OF KERCHEVAL AND WEST OF ST. JEAN.  
 - THE FIRST NORTH/SOUTH ALLEY WEST OF ST. JEAN FROM THE SOUTH LINE OF E. VERNOR HWY. ST. TO THE SOUTH LINE OF 2130 BENITEAU ST.

- THE FIRST NORTH/SOUTH ALLEY WEST OF ST. JEAN FROM THE SOUTH LINE OF GOETHE AVE. TO THE NORTH LINE OF CHARLEVOIX ST.  
 # ACCESS ENCROACHMENT INTO BENITEAU ST. BETWEEN EAST VERNOR HWY. AND KERCHEVAL WITH SEWER PIPE.

CITY OF DETROIT CITY ENGINEERING DEPARTMENT SURVEY BUREAU	
JOB NO.	01-01
DRWG. NO.	X 867