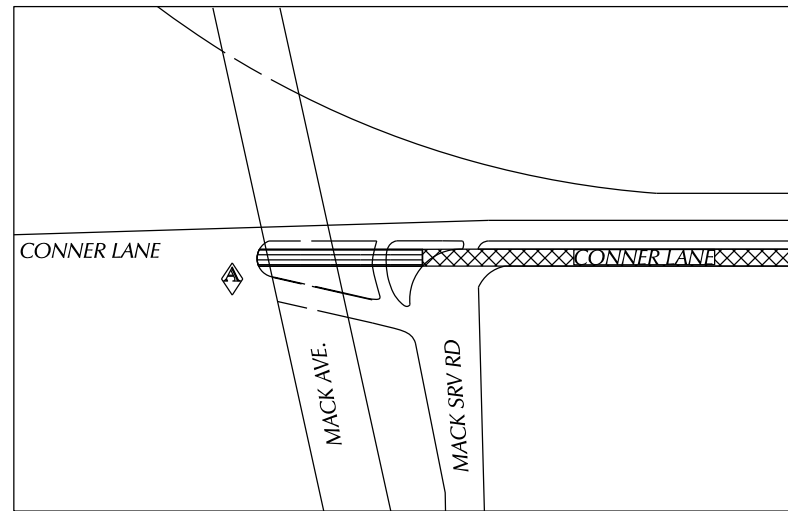
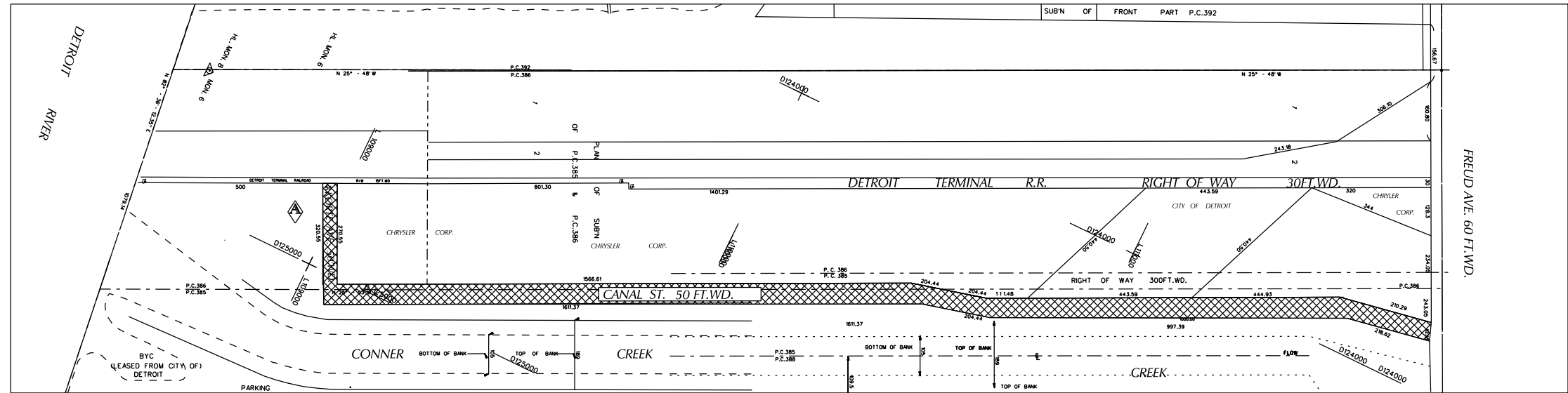
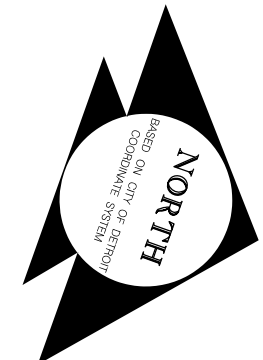
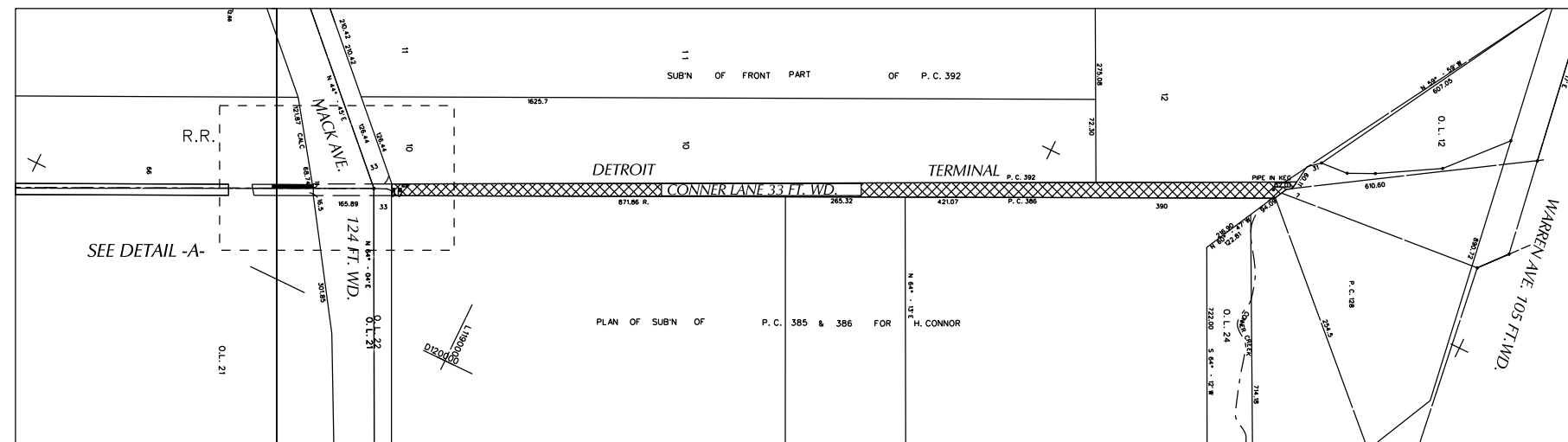


"REVISION -A-"

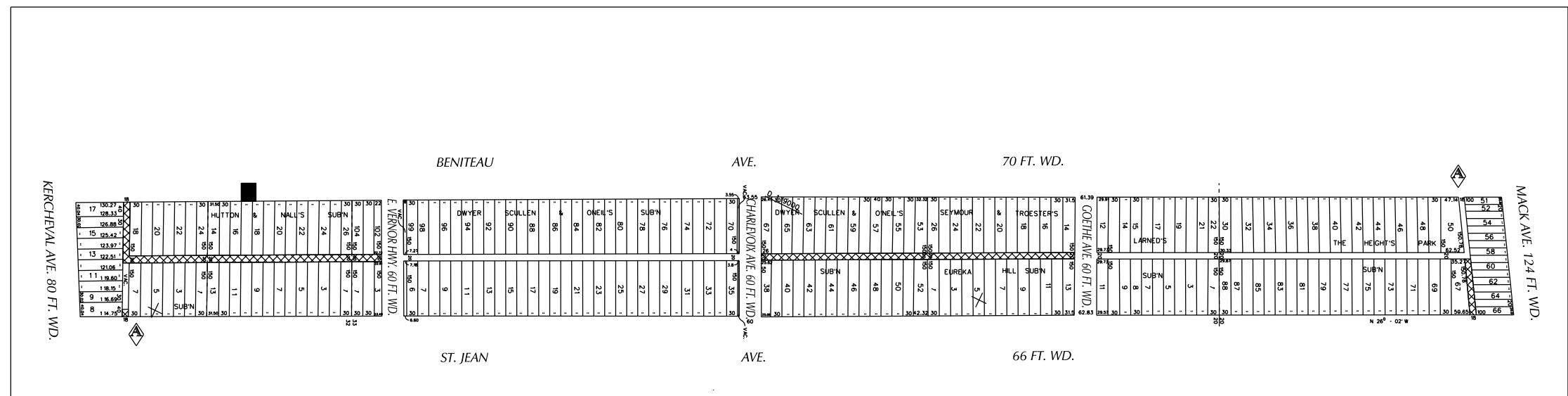
PETITION NO. 867
 DPW - CITY ENGINEERING
 (C/O KEITH MCCRARY)
 COLEMAN A. YOUNG
 MUNICIPAL CENTER, SUITE 642
 DETROIT, MICHIGAN 48226
 PHONE NO. (313) 224-3970



DETAIL -A-



- REQUESTED OUTRIGHT VACATION
- REQUEST ACCESS DRIVE ENCROACHMENT
- REQUEST ENCROACHMENT



(FOR OFFICE USE ONLY)

CARTO
 54G 54F 54A 55F 55A 56F 62C 62D 61C

B				
A	CHANGING THE DESCRIPTION	SA	KSM	7/25/19
REVISIONS				
DESCRIPTION	DRWN	CHKD	APPD	DATE
DRAWN BY	SA	CHECKED	KSM	
DATE	06-03-19	APPROVED		

REQUEST TO OUTRIGHT VACATE THE FOLLOWING PUBLIC RIGHT OF WAYS :
 - CONNER LANE FROM MACK AVE. TO ITS NORTHERN TERMINUS.
 - CANAL STREET FROM FREUD AVE. TO ITS SOUTHERN TERMINUS.
 - EAST/WEST ALLEY SOUTH OF MACK AVE. AND WEST OF ST. JEAN.
 - REMAINING 50 FEET OF THE EAST/WEST ALLEY NORTH OF KERCHEVAL AND WEST OF ST. JEAN.
 - THE FIRST NORTH/SOUTH ALLEY WEST OF ST. JEAN FROM THE SOUTH LINE OF E. VERNOR HWY. ST. TO THE SOUTH LINE OF 2130 BENITEAU ST.

- THE FIRST NORTH/SOUTH ALLEY WEST OF ST. JEAN FROM THE SOUTH LINE OF GOETHE AVE. TO THE NORTH LINE OF CHARLEVOIX ST.
 # ACCESS ENCROACHMENT INTO BENITEAU ST. BETWEEN EAST VERNOR HWY. AND KERCHEVAL WITH SEWER PIPE.

CITY OF DETROIT	
CITY ENGINEERING DEPARTMENT	
SURVEY BUREAU	
JOB NO.	01-01
DRWG. NO.	X 867