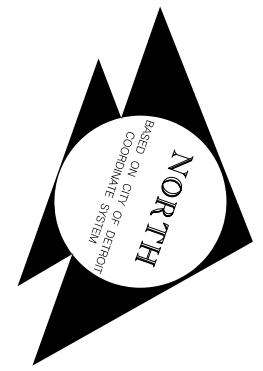
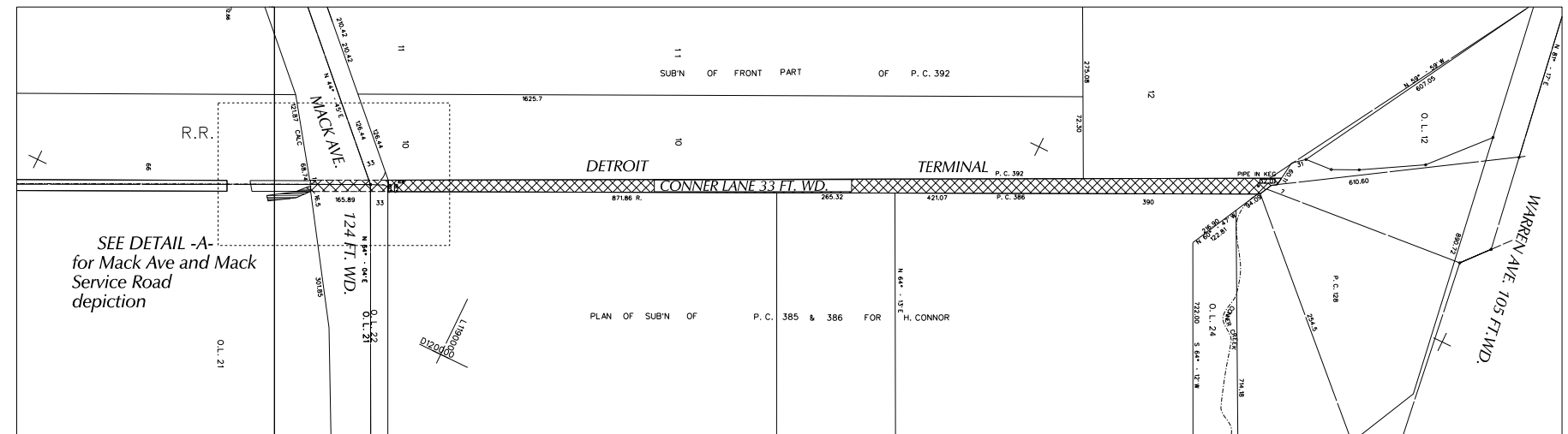
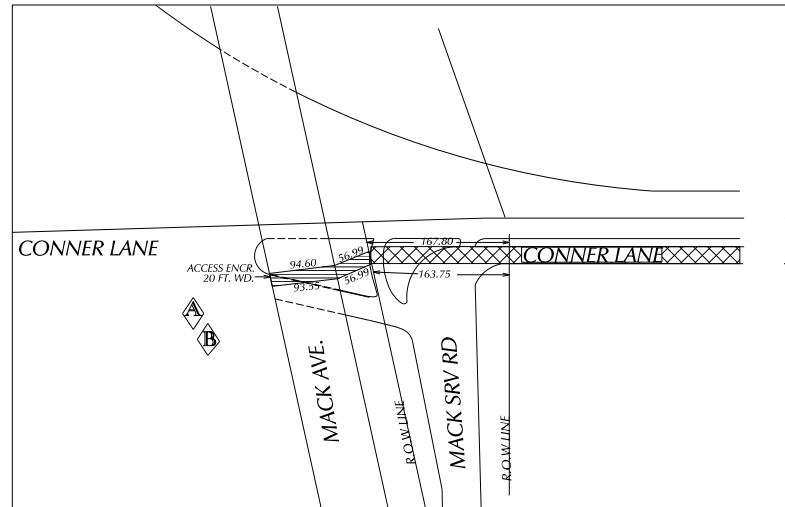
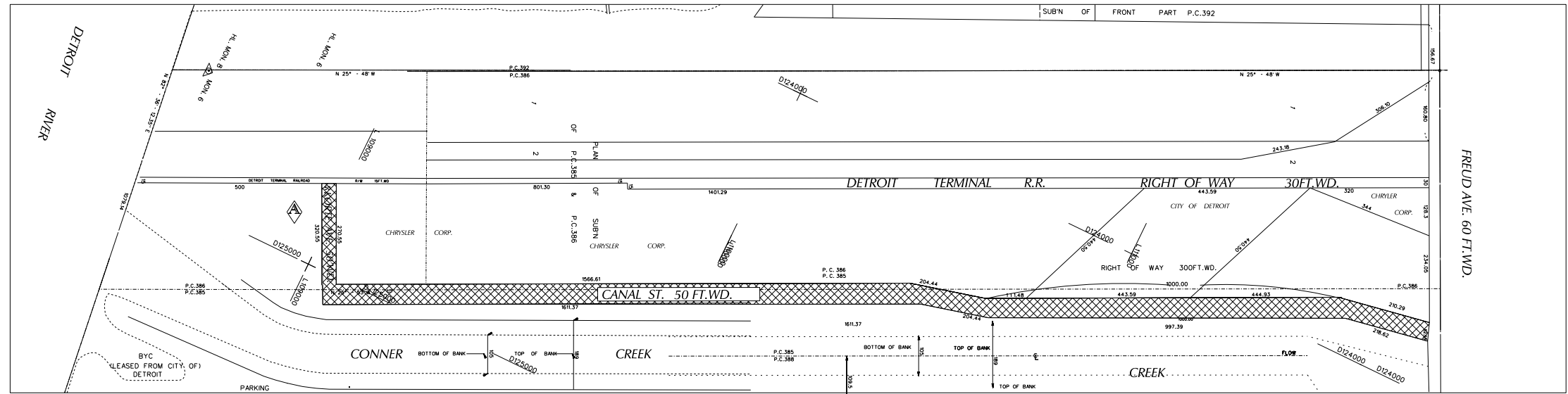


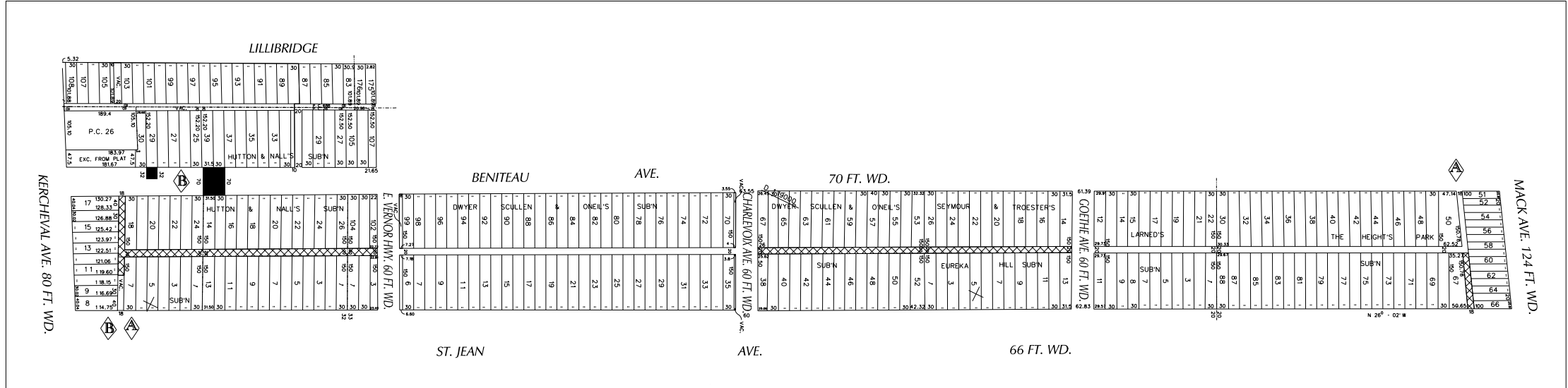
"REVISION -D-"

PETITION NO. 867
 DPW - CITY ENGINEERING
 (C/O KEITH MCCRARY)
 COLEMAN A. YOUNG
 MUNICIPAL CENTER, SUITE 642
 DETROIT, MICHIGAN 48226
 PHONE NO. (313) 224-3970



DETAIL -A-

- REQUESTED OUTRIGHT VACATION
- REQUEST ACCESS DRIVE ENCROACHMENT
- REQUEST ENCROACHMENT



| D | Access encr. changed | JK | 8/29/19 |
|-------------|--------------------------|----------|-----------|
| C | MINOR CHANGES | JK | 8/28/19 |
| B | CHANGING THE DESCRIPTION | JK | 8/28/19 |
| A | CHANGING THE DESCRIPTION | SA KSM | 7/25/19 |
| REVISIONS | | | |
| DESCRIPTION | DRWN | CHKD | APPD DATE |
| DRAWN BY | SA | CHECKED | KSM |
| DATE | 06-03-19 | APPROVED | |

REQUEST TO OUTRIGHT VACATE THE FOLLOWING PUBLIC RIGHT OF WAYS :
 - CONNER LANE FROM MACK AVE. TO ITS NORTHERN TERMINUS.
 - CANAL STREET FROM FREUD AVE. TO ITS SOUTHERN TERMINUS.
 - EAST/WEST ALLEY SOUTH OF MACK AVE. AND WEST OF ST. JEAN.
 - REMAINING 220 FEET OF THE EAST/WEST ALLEY NORTH OF KERCHEVAL AND WEST OF ST. JEAN.
 - THE FIRST NORTH/SOUTH ALLEY WEST OF ST. JEAN FROM THE SOUTH LINE OF E. VERNOR HWY. ST. TO THE SOUTH LINE OF 2130 BENITEAU ST.

- THE FIRST NORTH/SOUTH ALLEY WEST OF ST. JEAN FROM THE SOUTH LINE OF GOETHE AVE. TO THE NORTH LINE OF CHARLEVOIX ST.
 # ENCROACHMENT INTO BENITEAU ST. BETWEEN EAST VERNOR HWY. AND KERCHEVAL WITH SEWER PIPES; ALSO ACCESS DRIVE ENCROACHMENT FROM SOUTH LINE OF MACK SERVICE ROAD TO SOUTH LINE OF MACK BRIDGE PROPERTY

CARTO
 54G 54F 54A 55F 55A 56F 62C 62D 61C

| | |
|---|-------|
| CITY OF DETROIT CITY ENGINEERING DEPARTMENT SURVEY BUREAU | |
| JOB NO. | 01-01 |
| DRWG. NO. | X 867 |

(FOR OFFICE USE ONLY)