

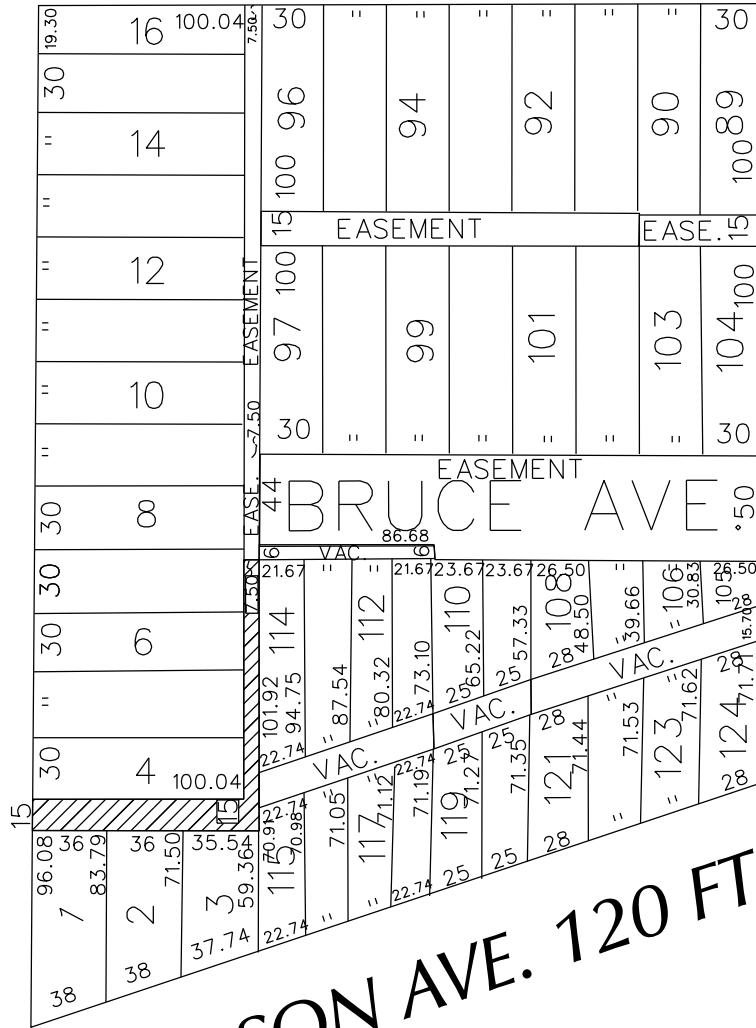
PETITION NO. 862
 DICKINSON WRIGHT PLLC.
 C/O CIRCLE ONE GROUP, INC.
 200 OTTAWA AVE., N.W., SUITE 1000
 GRAND RAPIDS, MICHIGAN 49503-2427
 TIMOTHY A. STÖEPKER
 PHONE NO. (313) 610-1811



LEACH AVE. 50 FT. WD.

FISCHER AVE. 60 FT. WD.

CRANE AVE. 50 FT. WD.



JEFFERSON AVE. 120 FT. WD.



- CONVERSION TO EASEMENT

(FOR OFFICE USE ONLY)

CARTO 46 A

B					
A					
DESCRIPTION	DRWN	CHKD	APPD	DATE	
REVISIONS					
DRAWN BY	SA		CHECKED	KSM	
DATE	06-09-20		APPROVED		

CONVERSION TO EASEMENT
 THE NORTH/SOUTH PUBLIC ALLEY 7.50 FT. WD.
 AND THE EAST/WEST PUBLIC ALLEY 15 FT. WD.
 IN THE BLOCK BOUND BY JEFFERSON AVE.,
 FISCHER AVE., LEACH AVE. AND CRANE AVE.

CITY OF DETROIT CITY ENGINEERING DIVISION SURVEY BUREAU	
JOB NO.	01-01
DRWG. NO.	X 862