

PETITION NO. 861
 MICHAEL E. WILLIAMS
 14371 CHAPEL ST.
 DETROIT, MICHIGAN 48223
 PHONE NO. 313 694-6873

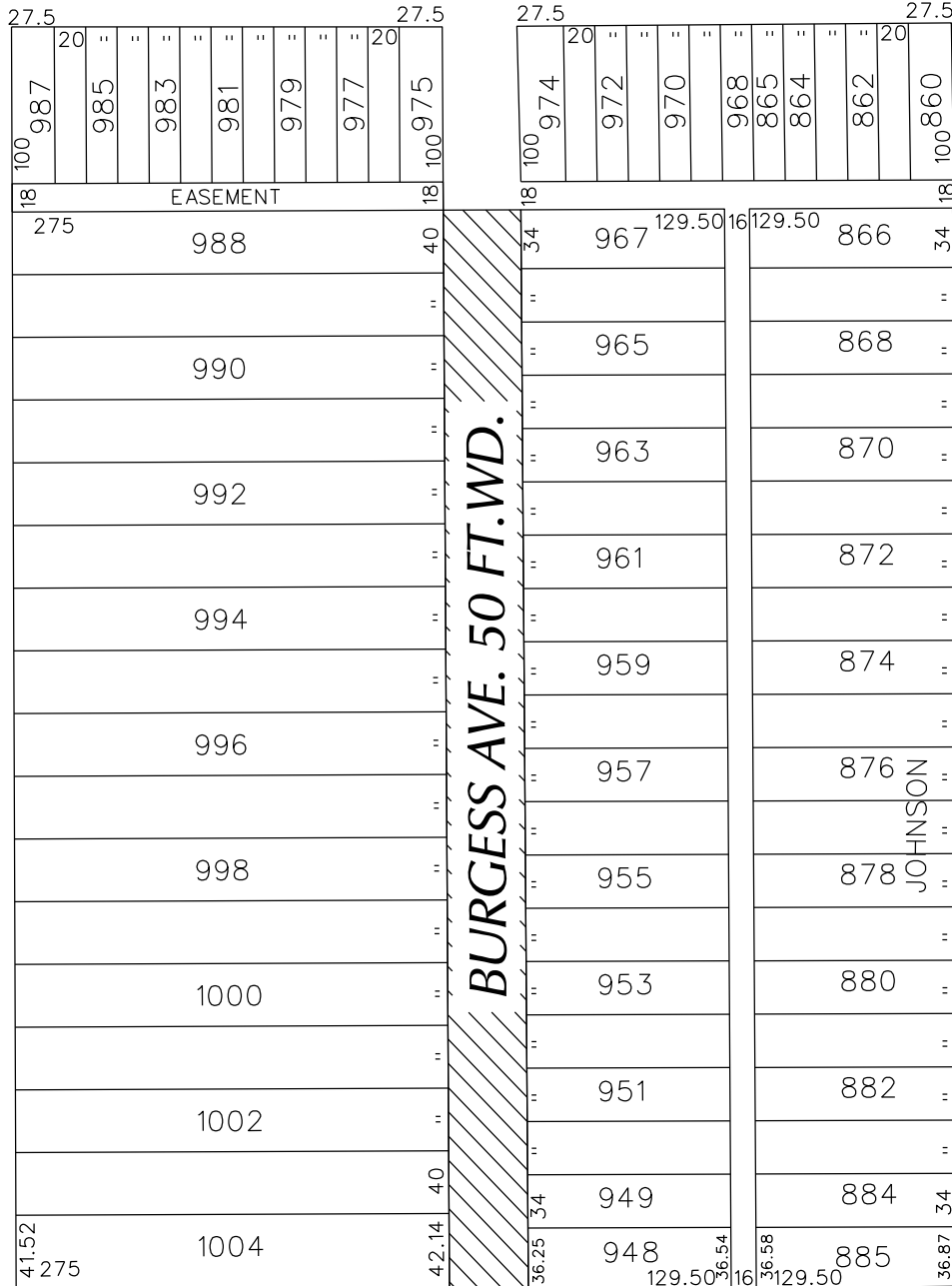


LYNDON AVE. 76 FT. WD.

GREYDALE AVE. 50 FT. WD.

BURGESS AVE. 50 FT. WD.

CHAPEL AVE. 50 FT. WD.



ACACIA AVE. 60 FT. WD.



- TEMPORARY STREET CLOSURE

(FOR OFFICE USE ONLY)

CARTO 112 D

B					
A					
DESCRIPTION	DRWN	CHKD	APPD	DATE	
REVISIONS					
DRAWN BY	CHECKED				
SA	KSM				
DATE	APPROVED				
06-18-19					

**REQUEST TO TEMPORARY CLOSE
 BURGESS ST. 50 FT. WD.
 IN THE BLOCK BOUND BY
 CHAPEL, ACACIA, GREYDALE
 AND LYNDON AVE.**

CITY OF DETROIT CITY ENGINEERING DIVISION SURVEY BUREAU	
JOB NO.	01-01
DRWG. NO.	X 861