



City of Detroit  
Inter-Departmental Communication

---

**TO:** Richard Doherty, City Engineer  
City Engineering/Department of Public Works

**FROM:** Debra Singleton, Engineer  
Detroit Water and Sewerage Department

**DATE:** September 23, 2019

**RE:** Petition No.810  
Requested Encroachment Into Haverhill And The East/West Alley In The Block  
Bound By Buckingham, Devonshire, Frankfort, And E. Warren (With Monitoring  
Wells)

---

The subject petition has been reviewed by this office. With regard to DWSD's interests, our comments are as follows:

- DWSD has no objections to the requested encroachments provided that the attached Provisions for Encroachment are strictly followed.

If you have any questions, please call me at (313) 267-8309 or Mohammed Fa Siddique at (313)-964-9245.

Sincerely,

Debra Singleton  
Engineer  
Permits

DS/MS/gj

Attachments

CC: Mohamad Farhat, CSF

Michael Duggan, Mayor

City of Detroit  
**City Engineering Division, Department of Public Works  
Survey Bureau**

**NOTICE OF PROPOSED CHANGE IN PROPERTY**

Date: 04/26/2016

Petition: x810

- |  |  |
|--|--|
| <input type="checkbox"/> AT&T Telecommunication            | <input type="checkbox"/> Berm Use                |
| <input type="checkbox"/> Comcast Television (CATV)         | <input type="checkbox"/> Conversion to Easement  |
| <input type="checkbox"/> Detroit Edison (DTE)              | <input type="checkbox"/> Dedication              |
| <input type="checkbox"/> Fire Department                   | <input checked="" type="checkbox"/> Encroachment |
| <input type="checkbox"/> Great Lakes Water Authority       | <input type="checkbox"/> Outright Vacation       |
| <input type="checkbox"/> Land Bank Authority               | <input type="checkbox"/> Temporary Closing       |
| <input type="checkbox"/> Michcon (DTE)                     |  |
| <input type="checkbox"/> Planning & Development Department |  |
| <input type="checkbox"/> Public Lighting Authority         |  |
| <input type="checkbox"/> Public Lighting Department        |  |
| <input type="checkbox"/> Police Department                 |  |
| <input type="checkbox"/> Solid Waste Division, DPW         |  |
| <input type="checkbox"/> Street Design Bureau, DPW         |  |
| <input type="checkbox"/> Street Maintenance Division, DPW  |  |
| <input type="checkbox"/> Traffic Engineering Division, DPW |  |
| <input type="checkbox"/> Water and Sewerage Department     |  |
| <input type="checkbox"/> _____                             |  |

A petition drawing is attached. Property shown on the attached print is proposed to be changed as indicated. Kindly report (using the back of this sheet) the nature of your services, if any affected by the proposed change and the estimated costs of removing and rerouting such services (if necessary).

Please return one copy to City Engineering Division, DPW within two weeks of the submittal date. Retain one copy and print for you file.

Ron Brundidge, Director, Department of Public Works

By: Richard Doherty, CED DPW  
City Engineer

**TO: City Engineering Division, DPW  
2 Woodward Ave., Suite 642  
Detroit, Michigan 48226-3462  
Survey Bureau: 313-224-3970**

**Petition: x810**

The proposed change in property (referred to on the other side of this sheet) would affect our services as follows:

- Not Involved
  
- Involved; but asking you to hold action on this petition until further notice.
  
- Involved; but no objections to the property change.
  
- Involved; objection to the property change.
  
- Involved; but no objections to the property change...provided as easement of the full width of the public right-of-way (street, alley or other public place) is reserved.
  
- Involved; the nature of our services and the estimated costs of removing and/or rerouting such services are:

\_\_\_\_\_  
(Utility or City Department)

\_\_\_\_\_  
By

\_\_\_\_\_  
Title

\_\_\_\_\_  
Date

\_\_\_\_\_  
Area code – Telephone number

PETITION NO. 810  
 WESTON SOLUTIONS  
 2501 JOLLY RD. SUITE 100  
 OKEMOS, MICHIGAN 48864  
 ERIK MARTINSON  
 PHONE NO. 517 381-5920



**FRANKFORT AVE. 60 FT. WD.**

**BUCKINGHAM RD. 60 FT. WD.**

4.4	1019	114	114	1042	4.4
40					40
"	1021			1040	"
"					"
"	1023			1038	"
"					"
"	1025	6 FOOT	6 FOOT	1036	"
"					"
"	1027			1034	"
"					"
"	1029			1032	"
4.0	1030	114	114	1031	4.0

**HAVERHILL RD. 60 FT. WD.**

4.4	1158				
40					
"	1160			<del>1179</del>	"
"					"
"	EAST DETROIT 1162			1177	"
"					"
"	1164	6 FOOT	6 FOOT	1175	"
"					"
"	1166			1173	"
"					"
"	1168			1171	"
4.0	1169	114	114	1170	4.0

**DEVONSHIRE RD. 60 FT. WD.**

100	24	20	"	"	"	"	"	"	"	"	"	20	24	100
	892	100												
				890										
								888						
												886		
													884	100

100	24	20	"	"										100
	883	100												
				881										
								879						

**E. WARREN AVE. 105 FT. WD.**

● - AREA OF ENCROACHMENT  
 (With Monitoring Wells)

(FOR OFFICE USE ONLY)

CARTO 70 C

B						REQUEST ENCROACHMENT INTO HAVERHILL AND INTO THE EAST/WEST PUBLIC ALLEY 16 FT. WD. IN THE AREA BOUND BY BUCKINGHAM, DEVONSHIRE RD, FRANKFORT AND E. WARREN AVE. (With Monitoring Wells)	CITY OF DETROIT CITY ENGINEERING DIVISION SURVEY BUREAU	
A					JOB NO. 01-01			
DESCRIPTION DRWN CHKD APPD DATE		REVISIONS		DRAWN BY WLW CHECKED KSM				DRWG. NO. X 810
DATE 04-26-19		APPROVED						

## **PROVISIONS FOR ENCROACHMENT For Petition 810**

Detroit Water and Sewerage (DWSD) agree to the proposed encroachment subject to the fulfilling of the following provisions:

1. By approval of this petition the (DWSD) does not waive any of its rights to its facilities located in the right of way, and at all time, DWSD, its agents or employees, shall have the right to enter upon the right of way to maintain, repair, alter, service, inspect, or install its facilities. All costs incident to the damaging, dismantling, demolishing, removal and replacement of structures or other improvements herein permitted and incurred in gaining access to DWSD's facilities for maintenance, repairing, alteration, servicing or inspection caused by the encroachment shall be borne by the petitioner. All costs associated with gaining access to DWSD's facilities, which could normally be expected had the petitioner not encroached into the right of way shall be borne by DWSD.
2. DWSD requires a vertical clearance of 18 feet above grade for maintenance excess and repair.
3. All construction performed under this petition shall not be commenced until after five (5) days written notice to DWSD. Seventy-two (72) hours notice shall also be provided in accordance with P.A. 53 1974, as amended, utilizing the MISS DIG one call system.
4. Construction under this petition is subject to inspection and approval by DWSD forces. The cost of such inspection shall, at the discretion of DWSD, be borne by the petitioner.
5. If DWSD facilities located within the right of way shall break or be damaged as the result of any action on the part of the petitioner, then in such event the petitioner agrees to be liable for all costs incident to the repair, replacement or relocation of such broken or damaged DWSD facilities.
6. The petitioner shall hold DWSD harmless for any damage to the encroaching device constructed or installed under this petition, which may be caused by the failure of DWSD's facilities.





**LEGEND**

- Proposed Phase 1 Vapor Well Location
- Proposed Phase 2 Vapor Well Location
- Subject Property
- Proposed Phase 2 Residential Sub-Slab Soil Gas Sampling
- Proposed Phase 3 Residential Sub-Slab Soil Gas Sampling

Scale: 1" = 40' FT

**WESTON SOLUTIONS, INC.**  
 Prepared by:  
 WESTON SOLUTIONS, INC.  
 2501 Jolly Road, Suite 100  
 Okemos, Michigan

**DEQ**  
 Prepared for:  
 MICHIGAN DEPARTMENT  
 OF ENVIRONMENTAL QUALITY  
 REMEDIATION AND REDEVELOPMENT DIVISION

**PROPOSED VAPOR INVESTIGATION AREAS**  
 SANDERS CLEANERS  
 15923 EAST WARREN AVE  
 DETROIT, MICHIGAN

SCALE: 1" = 480' DRAWN: JKM DATE: 3/1/2019 CHECKED BY: **Figure 1**



DRIVE

E OUTER

BUCKINGHAM

DEVONSHIRE

HAVERHILL

BUCKINGHAM

STELLWAGEN SCHOOL

CHATSWORTH

BALFOUR

SOMERSET

NOTTINGHAM

THREE

FRANK

WARREN AVE

BERKSHIRE

CHATSWORTH

BASE MAP

BASE MAP

BASE MAP

E MAP

UPPER

150'

22'SN

3'NN

123'EE

124'WN

8"

112'EE

8"

6"

6"

118'EE

2'EE 6"

114'EE

4'WN

7'EE

45'NS

19'

12'

12'

12'

12'

6"

6"

6"

19'

12'

12'

6"

6"

6"

19'

12'

12'

6"

6"

6"

19'

12'

12'

6"

6"

6"

19'

12'

12'

6"

6"

6"

19'

12'

12'

6"

6"

6"

19'

12'

12'

6"

6"

6"

19'

12'

12'

6"

6"

6"

19'

12'

12'

6"

6"

6"

19'

12'

12'

6"

6"

6"

19'

12'

12'

6"

6"

6"

19'

12'

12'

6"

6"

6"

19'

12'

12'

6"

6"

6"

45'SN

7'

8"

8"

8"

8"

8"

8"

6"

6"

6"

45'NS

30'

12'

45'NS

30'

12'

45'NS

30'

12'

45'NS

30'

12'

45'NS

30'

12'

45'NS

30'

12'

45'NS

30'

12'

45'NS

30'

12'

45'NS

30'

12'

45'NS

30'

12'

45'NS

30'

12'

45'NS

30'

12'

45'NS

30'

12'

45'NS

30'

12'

45'NS

30'

12'

45'NS

30'

12'

45'NS

30'

12'

45'NS

30'

12'

45'NS

30'

12'

45'NS

30'

12'

45'NS

30'

12'

45'NS

30'

12'

45'NS

30'

12'

45'NS

30'

12'

45'NS

30'

12'

45'NS

30'

12'

45'NS

30'

12'

45'NS

30'

12'

7'SN

12'

8"

8"

8"

8"

8"

8"

6"

6"

6"

6'NS

16'

11'

6'NS

16'

11'

6'NS

16'

11'

6'NS

16'

11'

6'NS

16'

11'

6'NS

16'

11'

6'NS

16'

11'

6'NS

16'

11'

6'NS

16'

11'

6'NS

16'

11'

6'NS

16'

11'

6'NS

16'

11'

6'NS

16'

11'

6'NS

16'

11'

6'NS

16'

11'

6'NS

16'

11'

6'NS

16'

11'

6'NS

16'

11'

6'NS

16'

11'

6'NS

16'

11'

6'NS

16'

11'

6'NS

16'

11'

6'NS

16'

11'

6'NS

16'

11'

6'NS

16'

11'

6'NS

16'

11'

6'NS

16'

11'

6'NS

16'

11'

150'

45'SN

3'NN

123'EE

124'WN

8"

112'EE

8"

6"

6"

6"

45'NS

30'

12'

45'NS

30'

12'

45'NS

30'

12'

45'NS

30'

12'

45'NS

30'

12'

45'NS

30'

12'

45'NS

30'

12'

45'NS

30'

12'

45'NS

30'

12'

45'NS

30'

12'

45'NS

30'

12'





ASSESSOR  
PSF 1927  
BD OF ED

ROLL  
CR  
8.0'

CHATSWORTH AVE  
12" CR  
1476

BERKSHIRE AVE  
12" CR  
496

BUCKINGHAM AVE  
10" CR  
1010

HAVERRHILL AVE  
10" CR  
1006

DEVONSHIRE AVE  
12" CR  
1145

BEDFORD AVE  
12" CR  
1282

SOUTH AMPTON AVE  
12" CR  
1200

SEWER CONNECTIONS FOR LOTS SHADDED THUS

SEWER  
12" CR  
117.0

SEWER  
12" CR  
117.2

SEWER  
12" CR  
117.3

SEWER  
12" CR  
117.4

SEWER  
12" CR  
117.5

SEWER  
12" CR  
117.6

SEWER  
12" CR  
117.7

SEWER  
12" CR  
117.8

SEWER  
12" CR  
117.9

SEWER  
12" CR  
118.0

SEWER  
12" CR  
118.1

SEWER  
12" CR  
118.2

SEWER  
12" CR  
118.3

SEWER  
12" CR  
118.4

SEWER  
12" CR  
118.5

SEWER  
12" CR  
118.6

SEWER  
12" CR  
118.7

SEWER  
12" CR  
118.8

SEWER  
12" CR  
118.9

SEWER  
12" CR  
119.0

SEWER  
12" CR  
119.1

SEWER  
12" CR  
119.2

SEWER  
12" CR  
119.3

SEWER  
12" CR  
119.4

SEWER  
12" CR  
119.5

SEWER  
12" CR  
119.6

SEWER  
12" CR  
119.7

SEWER  
12" CR  
119.8

SEWER  
12" CR  
119.9

SEWER  
12" CR  
120.0

SEWER  
12" CR  
120.1

SEWER  
12" CR  
120.2

SEWER  
12" CR  
120.3

SEWER  
12" CR  
120.4

SEWER  
12" CR  
120.5

SEWER  
12" CR  
120.6

SEWER  
12" CR  
120.7

SEWER  
12" CR  
120.8

SEWER  
12" CR  
120.9

SEWER  
12" CR  
121.0

SEWER  
12" CR  
121.1

SEWER  
12" CR  
121.2

SEWER  
12" CR  
121.3

SEWER  
12" CR  
121.4

SEWER  
12" CR  
121.5

SEWER  
12" CR  
121.6

SEWER  
12" CR  
121.7

SEWER  
12" CR  
121.8

SEWER  
12" CR  
121.9

SEWER  
12" CR  
122.0

SEWER  
12" CR  
122.1

SEWER  
12" CR  
122.2

SEWER  
12" CR  
122.3

SEWER  
12" CR  
122.4

SEWER  
12" CR  
122.5

SEWER  
12" CR  
122.6

SEWER  
12" CR  
122.7

SEWER  
12" CR  
122.8

SEWER  
12" CR  
122.9

SEWER  
12" CR  
123.0

SEWER  
12" CR  
123.1

SEWER  
12" CR  
123.2

SEWER  
12" CR  
123.3

SEWER  
12" CR  
123.4

SEWER  
12" CR  
123.5

SEWER  
12" CR  
123.6

SEWER  
12" CR  
123.7

SEWER  
12" CR  
123.8

SEWER  
12" CR  
123.9

SEWER  
12" CR  
124.0

SEWER  
12" CR  
124.1

SEWER  
12" CR  
124.2

SEWER  
12" CR  
124.3

SEWER  
12" CR  
124.4

SEWER  
12" CR  
124.5

SEWER  
12" CR  
124.6

SEWER  
12" CR  
124.7

SEWER  
12" CR  
124.8

SEWER  
12" CR  
124.9

SEWER  
12" CR  
125.0

SEWER  
12" CR  
125.1

SEWER  
12" CR  
125.2

SEWER  
12" CR  
125.3

SEWER  
12" CR  
125.4

SEWER  
12" CR  
125.5

SEWER  
12" CR  
125.6

SEWER  
12" CR  
125.7

SEWER  
12" CR  
125.8

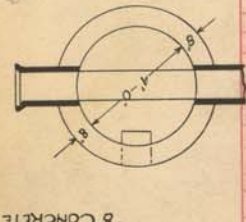
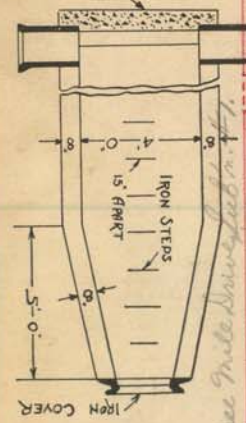
SEWER  
12" CR  
125.9

SEWER  
12" CR  
126.0

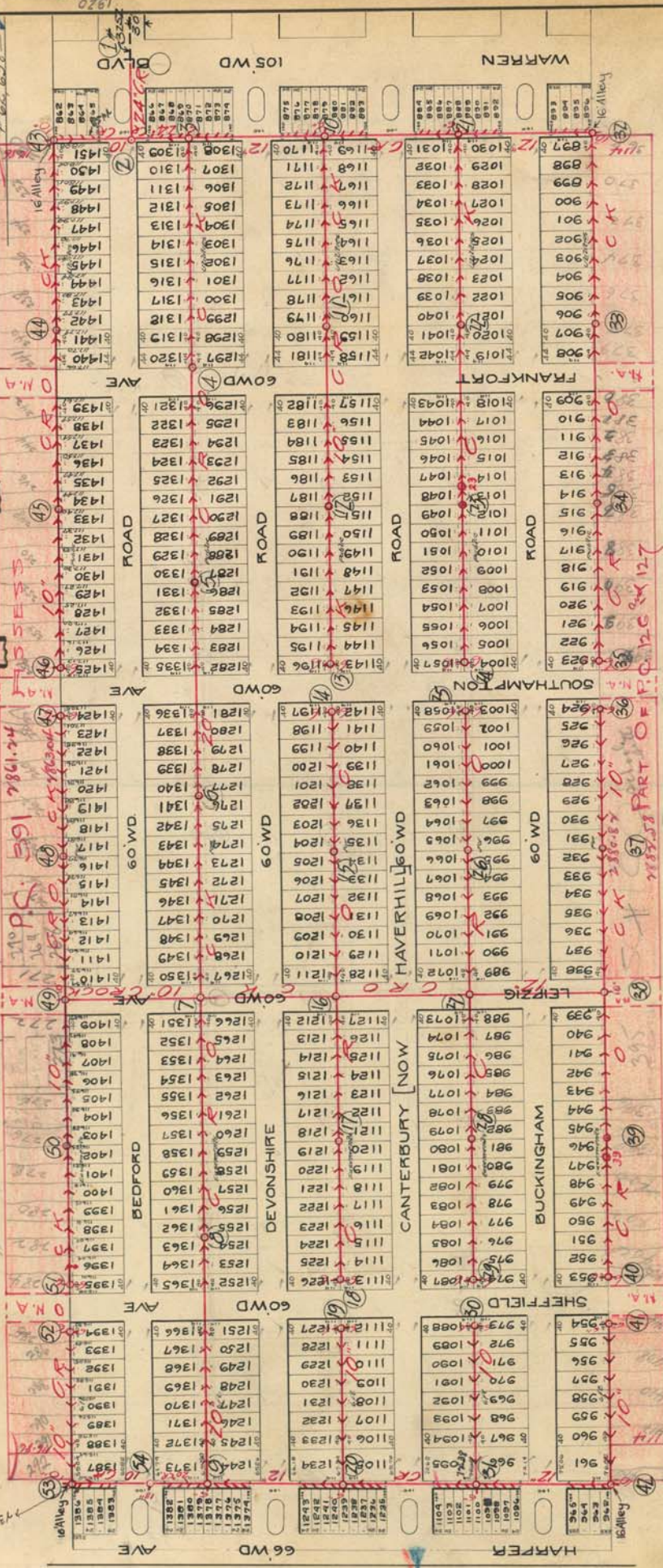


**SANITARY LATERAL SEWER IN ALLEY**  
OR EASEMENT.  
IN BLOCKS BOUNDED BY BEDFORD - WARREN - HARPER  
BUCKINGHAM -

DETAILS  
TOTAL LENGTH OF SEWER See Sheet # 4 FT. M. OR L.



SEWER NO. 3369  
ROLL NO. 8679  
PETITION NO. 3053  
PETITION DATE 12/27/19  
RESOLUTION 2/17/20  
BIDS OPENED Oct 18 - 1920  
CONTRACT CONF'D Oct 19-1920  
COMPLETED May 23-1921  
CONTR. *Sanitary of Boston*



NOTE:-- Each bidder is expected to examine the drawings, to visit the locality of the work, to make his own estimate of the facilities and difficulties attending the execution of the work, including local conditions and all other contingencies, whether surface or underground, to do all his own pumping and provide proper bulk heads when directed by city engineer. Above costs to be borne by contractor.

NOTE.--Contractor to furnish and set as markers for all connections 1/2 inch iron rods 2 feet long with 3 inch tile collar 6 inches long.

VERTICAL SCALE 1" = 10'  
HORIZONTAL SCALE 1" = 200'  
DRAWN BY [Signature]  
CHECKED BY [Signature]  
TRACED BY [Signature]  
NOTE BOOK 91/35

26220











# SANITARY SEWER IN ALLEY

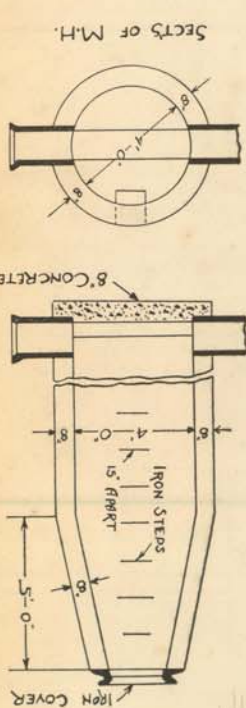
IN BLOCKS BOUNDED BY  
 BUCKINGHAM - BEDFORD - WARREN - HARPER

## DETAILS

TOTAL LENGTH OF SEWER 17,264.78 FT. M. OR L.

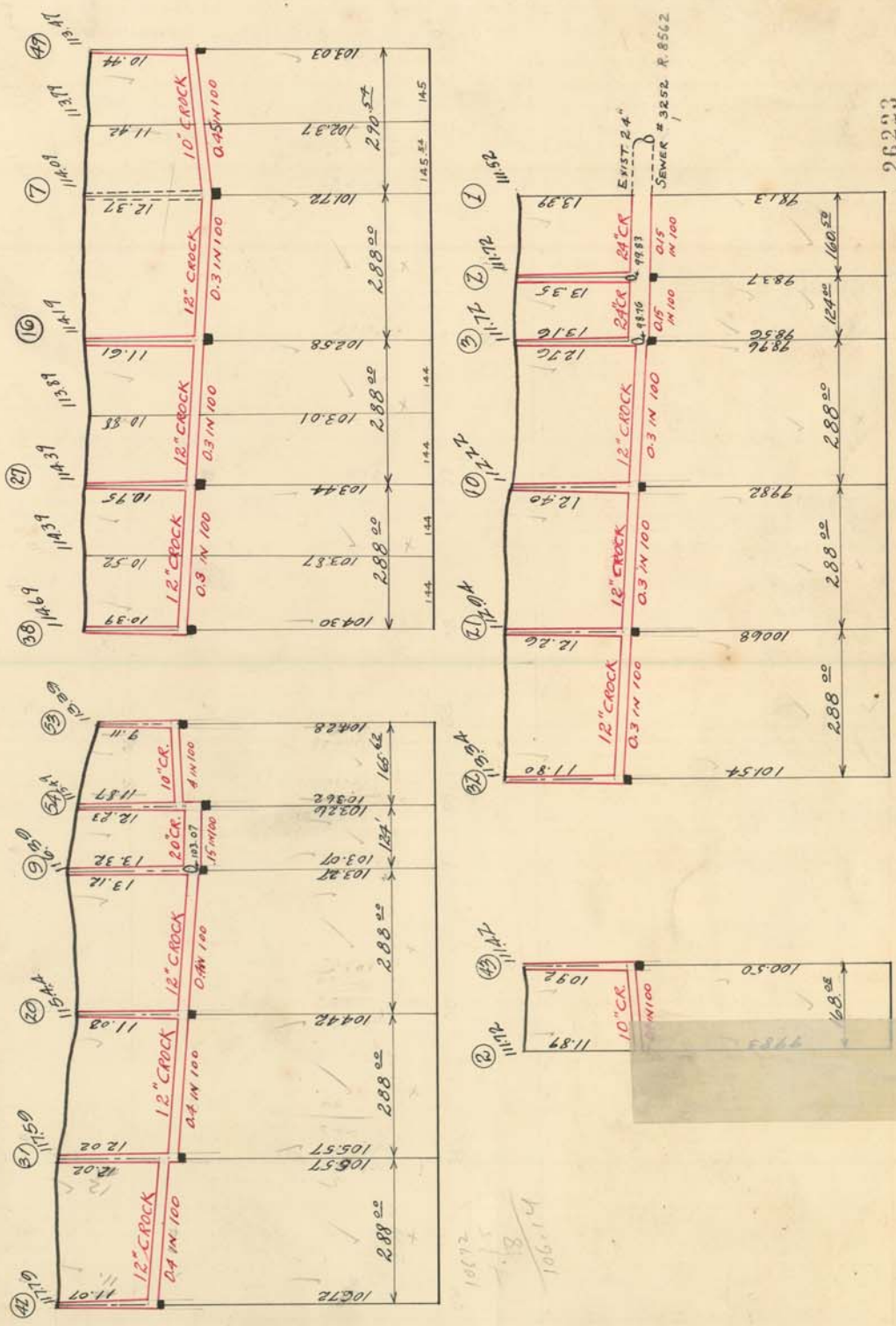
"	24" CR	284.50	INC 5'-6" Y'S
"	20" "	3007.50	INC 135'-6" Y'S
"	12" "	2592.00	INC 60'-6" Y'S
"	10" "	11380.78	INC 478'-6" Y'S

FIFTY-THREE Manholes INC 332 Iron Steps. { 38-6" CONNS  
 6-10"  
 1-18"



SECTS OF M.H.

SEWER NO. 3369  
 ROLL NO. 8679  
 PETITION NO. 3053  
 PETITION DATE 12/29/17  
 RESOLUTION 2/17/20  
 BIDS OPENED Oct. 18-1920  
 CONTRACT CONF'D Oct. 19-1920  
 COMPLETED May 23-1921  
 CONTR. Langley & Barton  
 \$62,648.00  
 Bonnichsen D. K.  
 Sanitary



NOTE--Contractor to furnish and set as markers for all connections 1/2 inch iron rods 2 feet long with 3 inch tile collar 6 inches long.

SCALE	VERTICAL 1"=10'
HORIZONTAL	1"=200'
DRAWN	M.H.
CHECKED	K.C.
TRACED	C.M.W.
NOTE BOOK	79/35

26293