

**City of Detroit**  
OFFICE OF THE CITY CLERK

Janice M. Winfrey  
City Clerk

Caven West  
Deputy City Clerk/Chief of Staff

**DEPARTMENTAL REFERENCE COMMUNICATION**

*Tuesday, March 19, 2019*

*To: The Department or Commission Listed Below*

*From: Janice M. Winfrey, Detroit City Clerk*

---

The following petition is herewith referred to you for report and recommendation to the City Council.

In accordance with that body's directive, kindly return the same with your report in duplicate within four (4) weeks.

---

PLANNING AND DEVELOPMENT DEPARTMENT    DPW - CITY ENGINEERING DIVISION

**767**    *DTE Energy on behalf of Blue Energy, request for encroachment on First Street between Beech and Grand River Ave. for the installation of Electric Vehicle Chargers.*

March 1, 2019

The Honorable City Council  
Attn: Office of the city Clerk  
200 Coleman A. Young Municipal Center  
Detroit, MI 48226

Mark W. Aitken  
Supervising Engineer – Engineering Technology  
DTE Energy

RE: Petition Request – DTE Energy/Blue Energy-Beacon Park Electric Vehicle Chargers

Dear Sir,

Project Kinetic is a unique collaboration formed in January 2018 between public (City of Detroit, PlanetM), private (General Motors, Lear, DTE Energy, Quicken Community Fund, Bedrock Detroit, Boston Consulting Group) and philanthropy (New Economy Initiative) sectors. One of the pilots initiated by this group is to create a futuristic public space in the heart of Detroit where people can meet and socialize while fast-charging their EVs. The fast chargers selected for this project are state-of-the-art technology with best in class slim design.

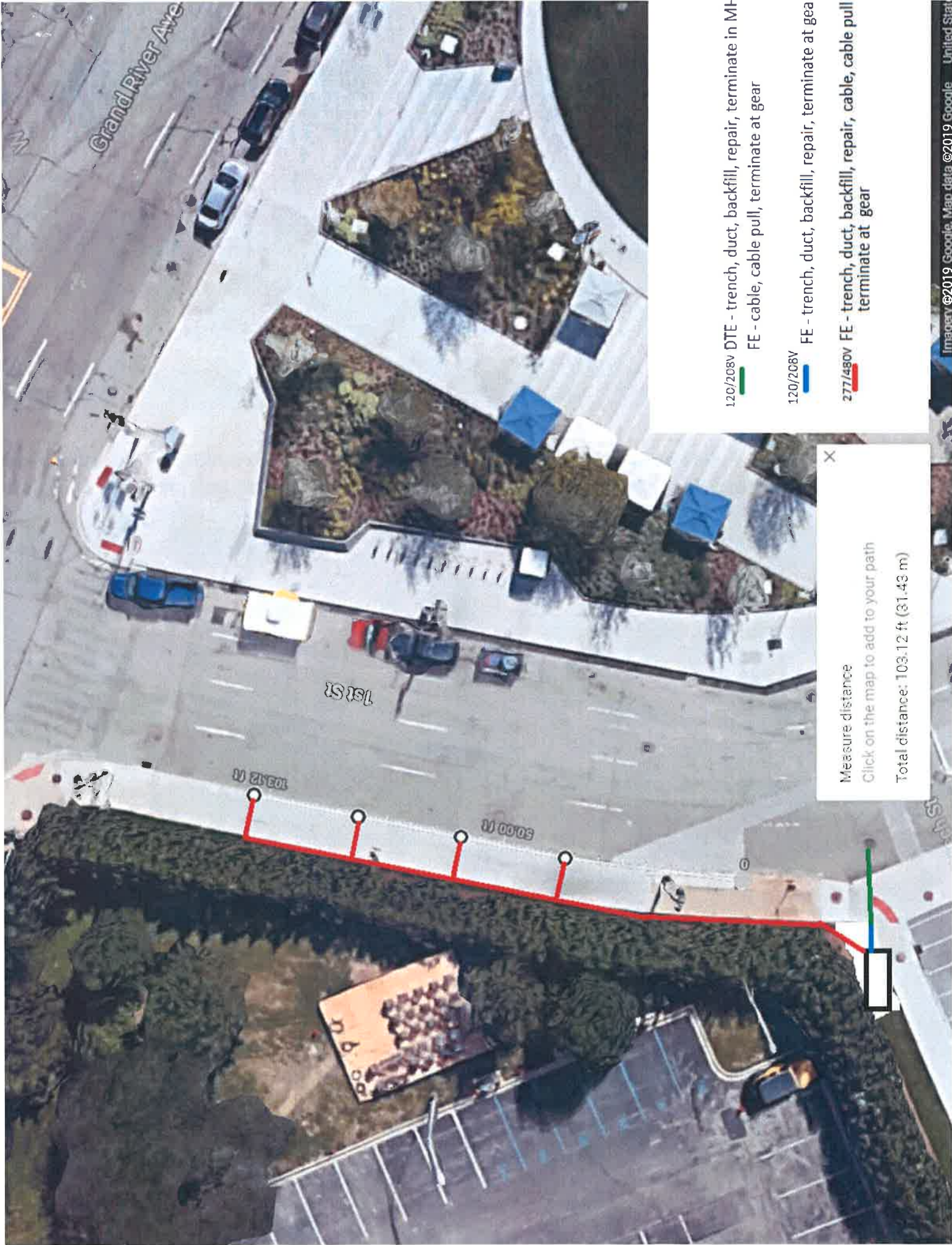
With this objective in mind DTE is petitioning The Honorable City Council for an Encroachment permit on the behalf of Blue Energy. Blue Energy will be the ultimate owners of the chargers and associated service equipment. We propose to install four Electric Vehicle charging stations on the west side of First Street between Beech Street on the south and Grand River Avenue on the north. The exact locations of the chargers are; Location 1: N42.334719, W83.056018, Location 2: N42.334778, W83.055999, Location 3: N42.334837, W83.055983, Location 4: N42.334896, W83.055966 as shown on the attached drawing. Also attached is a sketch of the charger itself that will be installed at this location. The encroachment below-grade will consist of electrical conductors from a manhole in the intersection of First and Beech streets to the west across the sidewalk to the greenbelt along Beech Street. Additionally, electrical conductors from the west side of the sidewalk to the four chargers. The encroachment above-grade will be the four chargers on concrete foundations at the locations indicated above.

The timeline for this proposal is to have the chargers installed and operational by the end of June, 2019. We target to begin construction in mid-April, 2019.

If you have any questions for clarification, please do not hesitate to contact me via email.

Respectfully,  
Mark W. Aitken, P.E.  
Supervising Engineer – Engineering Technology  
DTE Energy  
mark.aitken@dteenergy.com

(313) 310-5450



120/208V DTE - trench, duct, backfill, repair, terminate in MI  
FE - cable, cable pull, terminate at gear

120/208V

FE - trench, duct, backfill, repair, terminate at gear

277/480V FE - trench, duct, backfill, repair, cable, cable pull  
terminate at gear

Measure distance  
Click on the map to add to your path  
Total distance: 103.12 ft (31.43 m)



2019-03-19

**767**

**767** *Petition of DTE Energy on behalf of Blue Energy, request for encroachment on First Street between Beech and Grand River Ave. for the installation of Electric Vehicle Chargers.*

---

REFERRED TO THE FOLLOWING DEPARTMENT(S)

PLANNING AND DEVELOPMENT DEPARTMENT    DPW -  
CITY ENGINEERING DIVISION